

ON SALE SATURDAY, SEPTEMBER 10
TO FRIDAY, SEPTEMBER 16, 2005

bulk barn 

SUPER

Guaranteed top Quality!

SPECIALS

pitted, large Ashlock 66/100g

Prunes 2.99 lb

40/100g

Thompson Raisins 1.79 lb

natural or red 1.10/100g

Pistachios 4.99 lb

77/100g

Turkish Apricots 3.49 lb

sweetened 40/100g

Banana Chips 1.79 lb

66/100g

Neilson Bulk Chocolate 2.99 lb
selected varieties including macaroons and rosebuds

73/100g

Pure Milk Chocolate Bridge Mix 3.29 lb

53/100g

Cornnuts 2.39 lb
selected varieties

**Wednesday, September 21, 2005 is
World Alzheimer Day**

Help support your local Alzheimer Society in this year's 10th Annual Coffee Break™. When you're in our store between Wednesday, September 7th through Wednesday, September 21st, your \$1 Coffee Cup Donation card will help to raise funds for your local Alzheimer Society. All proceeds stay in your community to help support local programs and services.

Quality, value and selection since 1982

Canada's largest bulk food retailer & more. Now 87 locations and growing. Franchise locations available in Ontario and Atlantic Canada - (905) 886-6756.

Store Locations

MARKVILLE SHOPPING CENTRE (905) 475-7220
SCARBOROUGH TOWN CENTRE (416) 296-0287
FAIRVIEW MALL (416) 498-7541

**ON WEDNESDAY SENIORS* & STUDENTS*
SAVE 10% ON THEIR TOTAL SHOPPING BILL,
EXCLUDING SPECIALS & GIFT CERTIFICATES.**

*Must provide valid identification. While supplies last. On advertised items we reserve the right to limit quantities.

www.bulkbarn.ca

**Imperial Centre,
town offices
growing**

BY HANNELORE VOLPE
Staff Writer

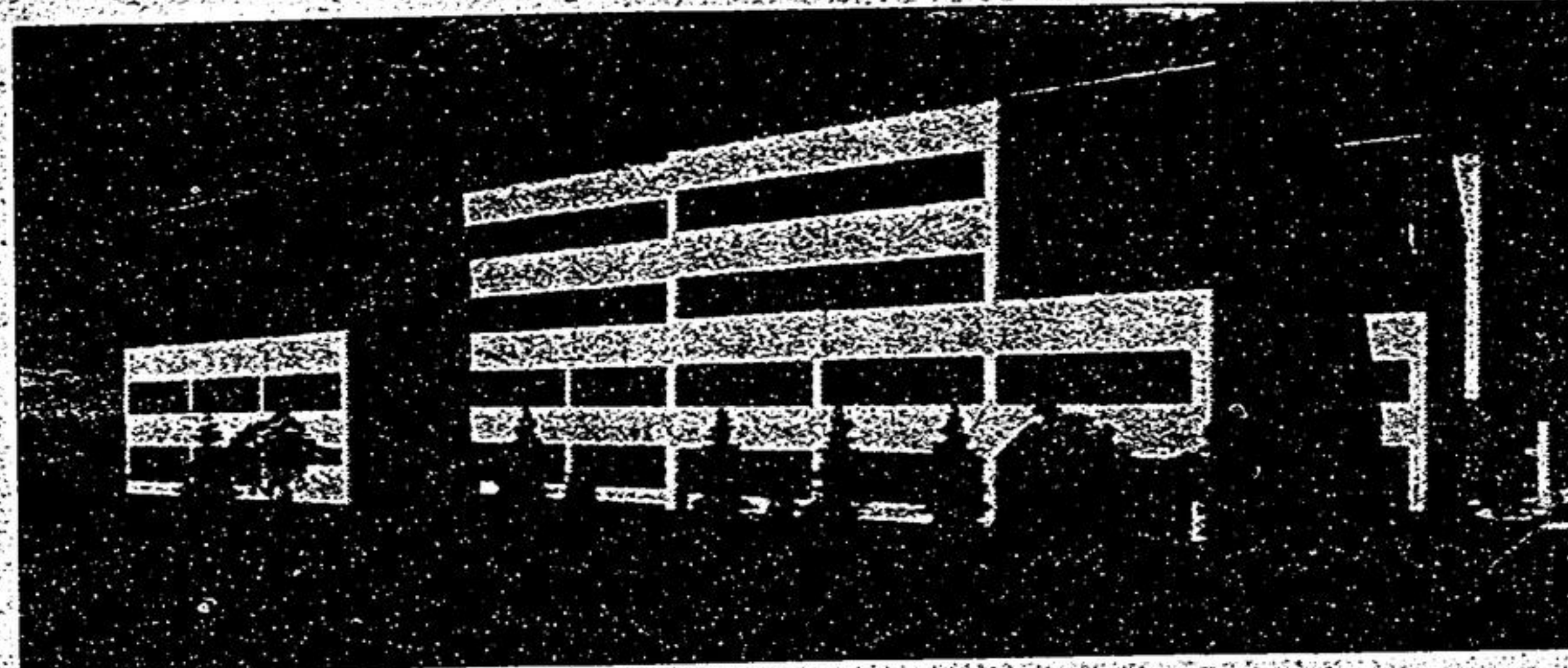
The Imperial Centre and town offices are growing with an eye to the future.

Construction of a 26,000-square-foot addition to the 60,000-square-foot, four-storey building at Sandiford Drive and Main Street is underway.

The parking lot was recently increased to 300 parking spaces, almost doubling the former area.

The approximate cost of the addition, the parking lot and landscaping is \$3 million. Construction costs for the addition are more than twice the cost per square foot of the original building 15 years ago, owner Louie Kojancic said.

The Whitchurch-Stouffville municipal offices are taking in the



This is an artist's conception of what the Imperial Centre will look like.

entire top floor of the newly-expanded building.

Even after the leisure services department moves from its second floor offices to the fourth floor, there will still be some room for expansion over the next two to three years, town administrator/treasurer Nick Kristoffy said.

All town departments will grow over the next two or three years, Mr. Kristoffy noted. However, there is a need particularly for more building inspectors, planners and additional leisure services staff to meet the needs of thousands of new residents moving into the town's subdivisions. The clerk's office will also require

more staff for bylaw enforcement and other functions.

Town staff could be moving early in the new year, Mr. Kristoffy said.

The exterior work on the building should be ready by the end of September, while completion of the interior is anticipated around the end of the year.

Mr. Kojancic, who first began construction of the original Imperial Centre building in 1990, decided the time was ripe for expansion after taking a survey of tenants in the building. Many of them were in need of more space, he found. Existing tenants are taking about 90 per cent of the new space, he noted.

Dean Watson Auto Sales Ltd.

HWY. 47, UXBRIDGE



905-852-3313

1-866-852-3313

www.deanwatsonchrysler.ca

North Durham's Largest Full Service Daimler Chrysler Dealer Since 1966

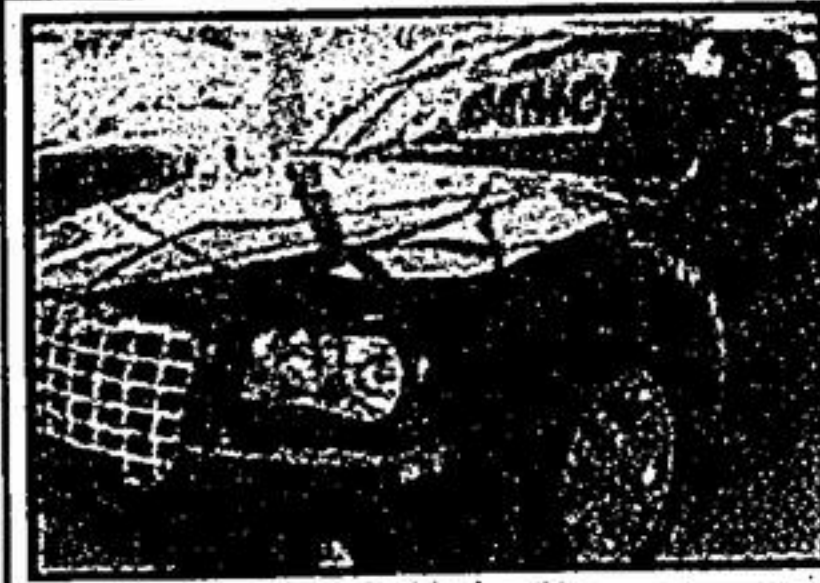
NEW • PRE-OWNED • SERVICE • PARTS

"EMPLOYEE PRICING PLUS" CONTINUES

All new 2005 Chrysler, Dodge, Jeep Product Available at Chrysler Employee Pricing.... that means you buy or lease at dealer cost and ... take advantage of customer incentives with interest rates as low as 0% or cash discounts as high as \$6000. This one time offer expires September 6, 2005.

OVER 40 LATE MODEL VEHICLES IN STOCK!!

**Interest rates less than 7%!!
*OAC. Subject to change w/o notice. Excludes SRT models, 300C SR13 & Dodge Sprinter.



2005 CHRYSLER 300 C

"GROUNDED DEMO"

5.7 L Hemi, California Walnut Wood Trim, Sunroof, GPS Navigation, Low Kms. \$49,790 MSRP

NOW BELOW EMPLOYEE PRICING \$39,995 + taxes

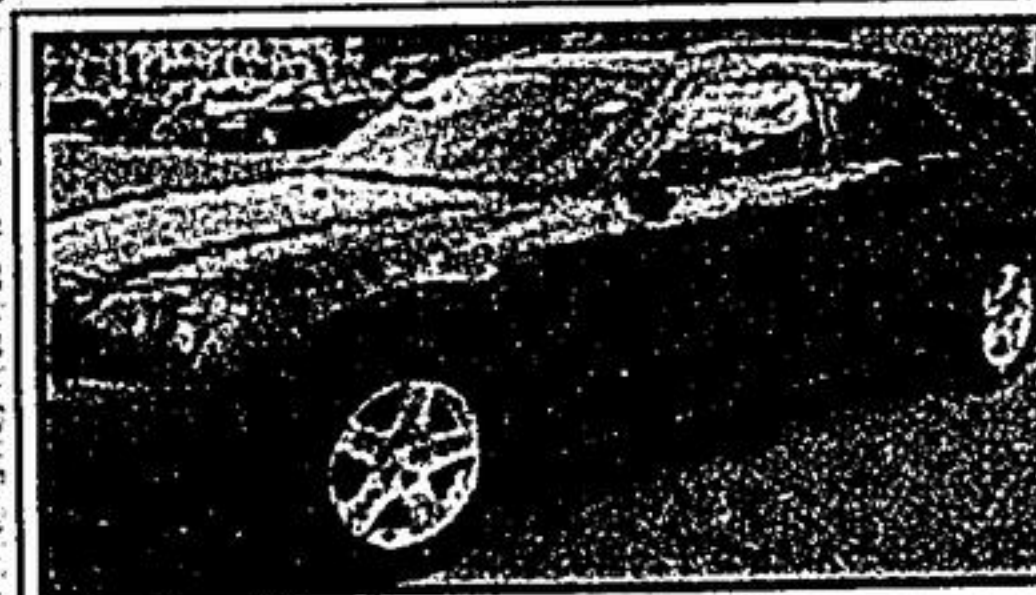


2005 1500

QUAD CAB 4X4

5.7 L Hemi, Trailer Tow, 4x4, ABS, Anti-Spin, 20" wheels, Tonneau Cover, Step Boards, Fully Loaded \$46,016 MSRP

EMPLOYEE PRICING \$39,120 + Freight, taxes



2005 MAGNUM SXT

3.5 L V6, Sunroof, Rack & Cargo Organizer, Loaded. \$34,900 MSRP

EMPLOYEE PRICING \$29,423 + Freight, taxes

The most powerful reason yet to visit us for summer service.

Give your vehicle a complete check-up from top to bottom with our Peace-of-Mind Service Package

42-point Peace-of-Mind Inspection including:
of Check Brakes • of Check Exhaust System • of Check Electrical System
of Check Cooling System • of Check Suspension
of Repair or Replace Fluids and Check Other Fluid Conditions
of Write Report on Findings and Much More
PLUS
of Tire Rotation
of Wash, Wax and Filter Change

\$45.95
On now for only



HOURS

• **Mon-Thurs 9-8**

• **Fri 9-6 • Sat 9-4**

• SLOW CREDIT • BANKRUPT CREDIT
• NO CREDIT

• CALL TED OR MARK 1-866-852-3313