

**"#1" AGENT IN MARKHAM/UNIONVILLE**



Sherry Hayes Sales Representative  
Maureen DeFreitas Sales Representative  
Katherine Morgan Sales Representative

**"#1" In Canada**  
**"9" Consecutive Years**  
**"#1" in Markham/Unionville 2004**

**905-947-9300**

**Thank You, Markham/Unionville**

Sylvia Houghton Sales Representative  
Derek Houghton Broker/Owner



**A "SHOW PIECE!"**

**\$527,000**

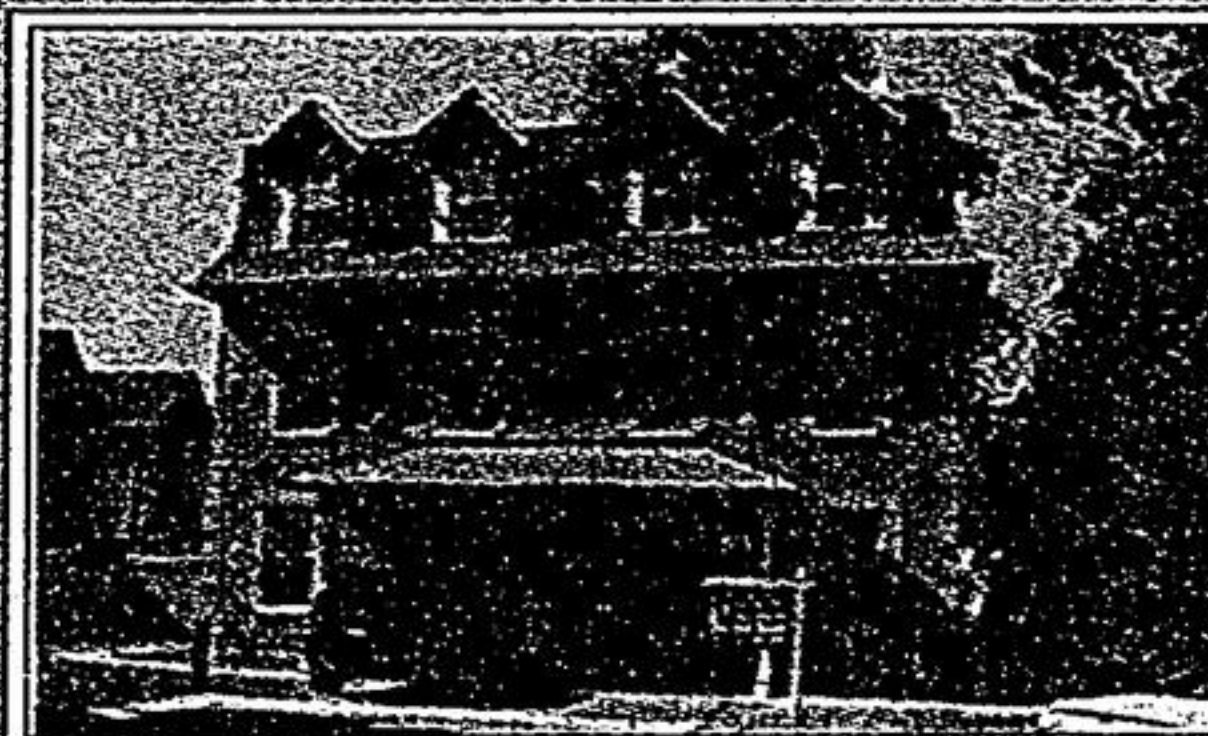
Stunning 3269 sq.ft. 5+ bdrm home! Open concept fam rm/kit, high ceilings on mtl flr, gourmet kit w/centre island, maple cabinetry, backsplash. Upgr's galore!! Teen ensuite, hrdwd flrs, 4 bthrms, hot tub, fenced yard, landscaped +++  
Call Sylvia Houghton\* or Sherry Hayes\*  
905-947-9300



**'SHERWOOD ESTATES'**

**\$457,000**

Home shows to perfection, totally reno'd 3 levels, 4 plus bdrms, main flr family with stone fp. W/o from kit & family rm. Granite countertops amongst many upgrades. Fenced yard w/inground pool & custom cabana.  
Call Sylvia Houghton\*  
905-947-9300



**STEPS TO "OLDE UNIONVILLE MAIN ST"**

**\$438,000**

Spectacular custom 3 storey townhouse w/fin bsmt. Features 3+2 bdrms, 5+ bathrms, hrdwd. Approx 2200 sq.ft. in the "Heart of Unionville". Maintenance fees include: water, bldg insurance, parking & common elements.  
Call Sylvia Houghton\* or Sherry Hayes\*  
905-947-9300



**PRIME THORNHILL AREA**

**\$325,000**

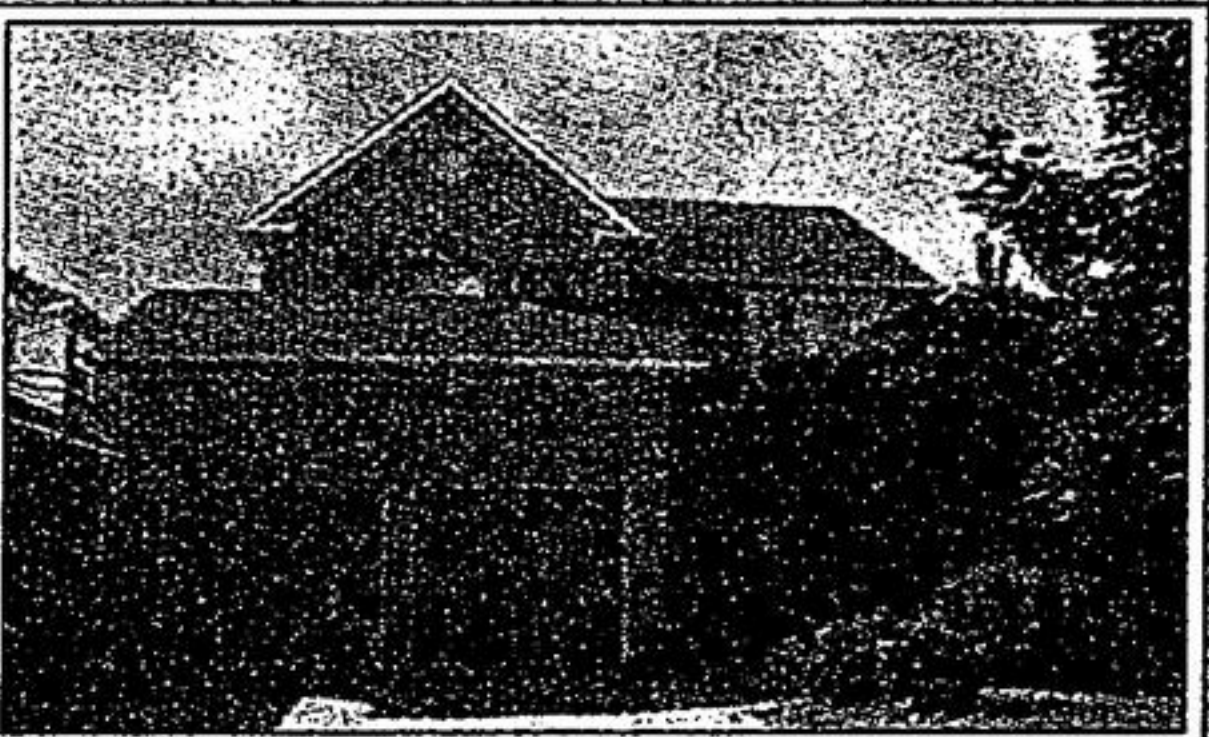
Semi-detached 3 bdrm home in a "well established" sought after neighbourhood, close to public transit, shopping, schools, community centre. Beautiful gardens in backyard. Finished basement.  
Call Sylvia Houghton\* or Sherry Hayes\*  
905-947-9300



**PERFECTION PERSONIFIED**

**\$627,000**

A true "Wow" home with 4 bedrooms, premium location, professionally landscaped front & back. Fenced yard, 3 gates. Quality hardwood floors, pot lights, professionally painted. A true showpiece.  
See it with Sylvia Houghton\*  
905-947-9300



**37 FOXMEADOW LANE "OLD UNIONVILLE"**

**THE "BRIDLE TRAIL" \$693,000**

Walk to Main Street, Unionville. Approx 2900 sq.ft., french doors, skylights, hardwood, 9' ceilings. Professionally finished basement with wet bar & gas fireplace.  
Call Sylvia Houghton\*  
905-947-9300



**YES - "CHAMBERY CRESCENT!"**

**\$828,000**

The Henry Summerfelt with loft. The location walking to all Olde Unionville has to offer, plus walk to school. Pride of ownership prevails with 4+ bdrms, 2 fps. Over \$100,000 in landscaping with pool & cabana, fin bsmt, too. A must see. Must have.  
Call Sylvia Houghton\* 905-947-9300



**UNIONVILLE - BEAUTIFUL LOCATION**

**\$578,000**

4+ bdrms, 4 washrms, mtl flr fam rm, 2 fps, fully fin w/o bsmt, French drs, hrdwd, ceramic. W/o to deck from kit, the list goes on. This immaculate family home backs to park & walking distance to public, catholic & Unionville High!  
A definite "10!"  
Call Sylvia Houghton\* 905-947-9300



**YOUR VERY OWN MANSION**

**\$1,795,000**

Over \$500,000 in renovations & additions! 9' ceilings on main floor & 2nd. Professionally finished basement, 5 plus bedrooms, 7 washrooms, positively awesome decor! Approx 6000sq.ft. This home has it all including pool and basketball court.  
Call Sylvia Houghton\* 905-947-9300



**71 GREEN VALLEY CIRCLE**

**WHIT/STOUFF \$1,277,000**

Outstanding 5250sq.ft. estate home on 1.5 acres backing a 22 acre protected greenbelt. Features 4 bdrm, 4 bthrms, sunken fam rm, 2 fireplaces, gourmet kitchen with granite counters, centre island, b/i appliances, +++  
Call Sylvia Houghton\*  
905-947-9300



**'GLENRIDGE ESTATES' 1 ACRE**

**\$1,393,000**

A very elegant executive home with 5 bdrms, 5 washrms, 3 car garage surrounded by botanical gardens. Luxurious appointments thru-out including 100% wool carpets from Elite. Approx 5000sq.ft. of pure luxury awaits the most discriminating buyer.  
Call Sylvia Houghton\* 905-947-9300



**LIMITED EDITION IN CACHET ESTATES**

**\$1,248,000**

5+ bdrms, 6 washrms, finished bsmt, 4 fps. This Rich, Regal, executive home has a fenced professionally landscaped yard. Large kitchen with 6 appliances, 2 w/o's to deck. Fabulous from the word go.  
Call Sylvia Houghton\*  
905-947-9300



**MARKHAM VILLAGE - BACKS PARK**

**159' LOT! \$518,800**

Large pie-shaped lot, watch your children walk across the park from school, excellent neighbourhood, large 3100' Georgian home - newer roof, windows, floors, professionally finished basement, 5 bathrooms.  
Call Sylvia Houghton\* or Katherine Morgan\*  
905-947-9300



**AMAZING - YORKWOOD BUILT EXECUTIVE**

**\$548,000**

Approx 3360sq.ft., this 4 bdrm home w/spacious rooms is immaculate in every detail. Main flr library and family room. Great layout perfect for formal and casual living. Neutral decor, luxury touches. A truly lovely family home.  
Call Sylvia Houghton\*  
905-947-9300



**1/2 ACRE, CUSTOM HOME**

**IN THE "OF THE VILLAGE" \$698,000**

Approx 3000 sq.ft. on 4 levels, Beckerman kitchen, 2 family rooms, 4 bedrooms, 2 washrooms. Custom deck. Renovated kitchen addition. An amazing house with 24x12' outdoor heated cedar workshop. Country living close to all amenities.  
Call Sylvia Houghton\*  
905-947-9300



**STUNNING BALLANTRAE HOME**

**\$789,000**

3+1 bdrms w/hrdwd & 4pce ensuite, completely renovated top to bottom w/huge, white kitchen w/walk-out to 3 tier cedar deck w/hot tub, huge family room w/tp; 31x25ft garage plus sep back w/plum & elect. 2.45 acres  
Call Derek Houghton\* 905-947-9300  
www.derekhoughton.com



**ROLLS ROYCE OF BUILDERS**

**\$599,900**

3051 sq.ft. of quality craftsmanship, granite countertops, 9' ceilings, hardwood on main level.  
4 bedrooms, 4 baths, great location.  
ONLY 2 left so make your apt to see and sigh today with:  
Sylvia Houghton\* 905-947-9300



**FIRST CLASS ALL THE WAY**

**CHIMENTI COURT \$569,900**

3051 sq.ft. of quality craftsmanship, granite countertops, 9' ceilings, hardwood on main level.  
4 bedrooms, 4 baths, great location.  
ONLY 2 left so make your apt to see and sigh today with:  
Sylvia Houghton\* 905-947-9300



**THE BEST OF UNIONVILLE**

**\$1,298,000 OR RENT \$5,900 PER MTH**

5000sq.ft. of custom perfection on 285' lot. Backing onto pond, this magnificent custom home complete w/art studio, 5 bdrms, 7 washrms, fabulous gourmet kit/fam rm, private master retreat beautiful hrdwd and elegant finishes a perfect home for entertaining your best clients.  
Call Sylvia Houghton\* 905-947-9300



**31 JOHN DEXTER PLACE**

**\$499,900**

Impressive upgraded 4 bdrm home in exclusive "Sherwood Estates", sitting on a 66' lot this home features new vinyl windows, newer roof, amazing upgr'd kit w/granite counters open to fam rm & fabulous neighbourhood, walk to schools.  
Call Sylvia Houghton\* or Katherine Morgan\*  
905-947-9300

MOVE UP TO THESE HOMES AND "SYLVIA HOUGHTON" WILL BUY YOUR HOME FOR CASH

MOVE UP TO THESE HOMES AND "SYLVIA HOUGHTON" WILL BUY YOUR HOME FOR CASH

