

**"#1" AGENT IN MARKHAM/UNIONVILLE**



**"#1" In Canada**  
**"9" Consecutive Years**  
**"#1" in Markham/Unionville 2004**



Sherry Hayes Sales Representative  
 Maureen DeFreitas Sales Representative  
 Katherine Morgan Sales Representative

Sylvia Houghton Sales Representative  
 Derek Houghton Broker/Owner

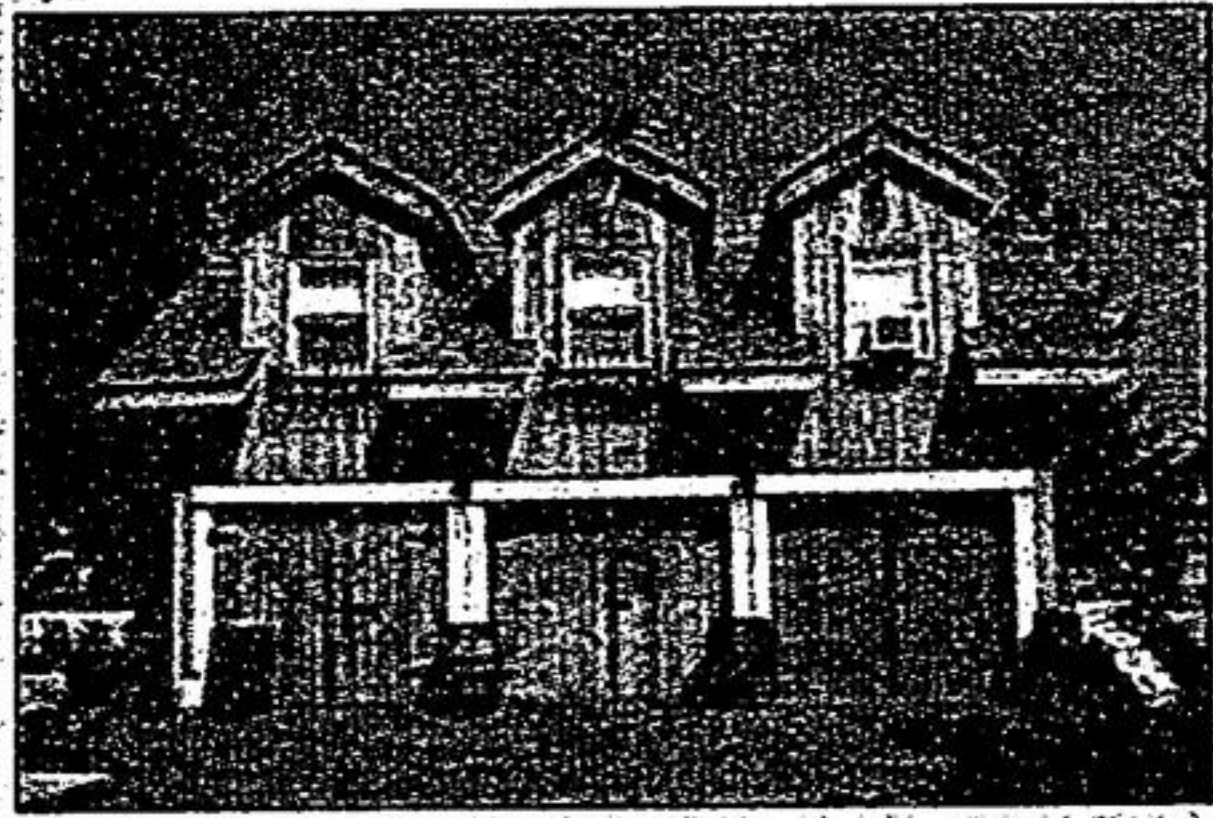
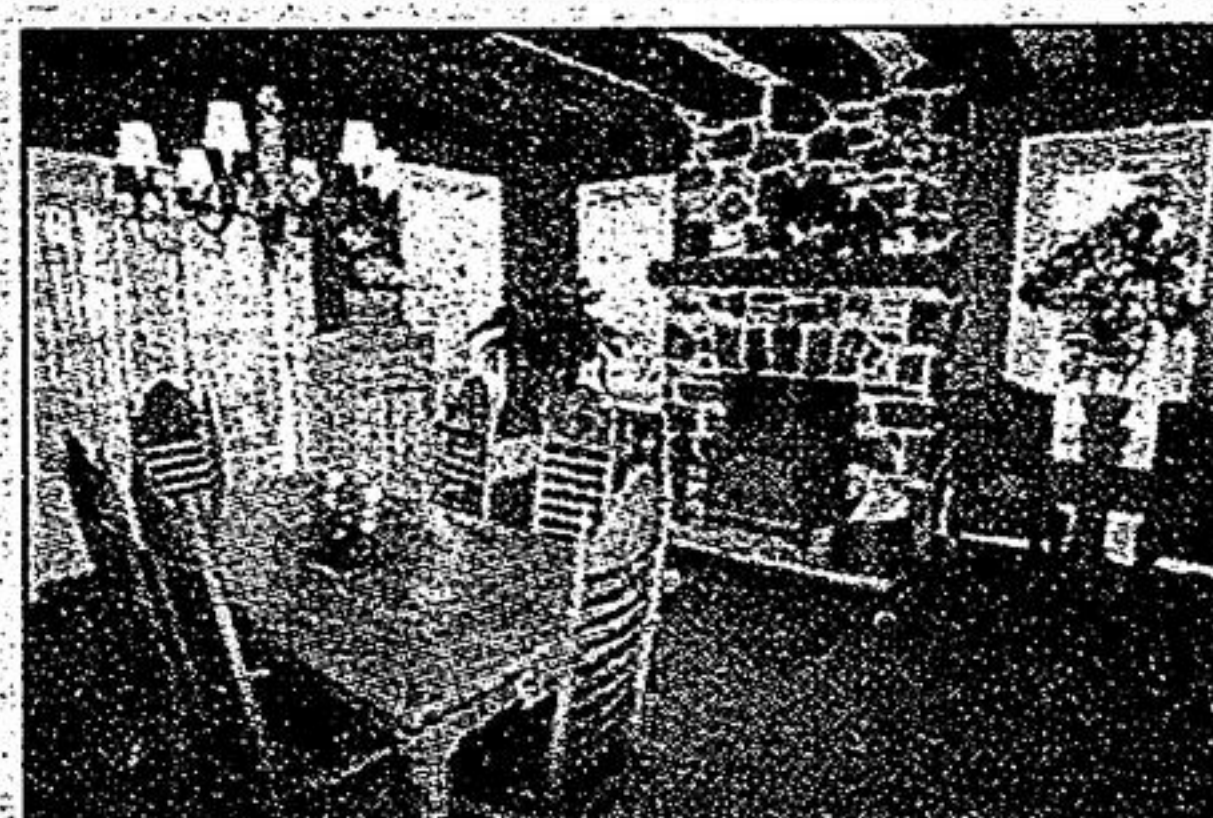
**905-947-9300**

**Thank You, Markham/Unionville**



MOVE UP TO THESE HOMES AND "SYLVIA HOUGHTON" WILL BUY YOUR HOME FOR CASH

MOVE UP TO THESE HOMES AND "SYLVIA HOUGHTON" WILL BUY YOUR HOME FOR CASH



**THE 'MC CREIGHT HOME' CIRCA 1865 - \$848,000**

A stunning heritage home with original hardwood, loads of windows, main floor family room, gorgeous gourmet kitchen with slate floors, granite countertop, open to huge eat-in area with magnificent fieldstone fireplace, 3 plus bedrooms, 5 washrooms. Unbelievable finished basement. Totally rebuilt. A joy to behold.

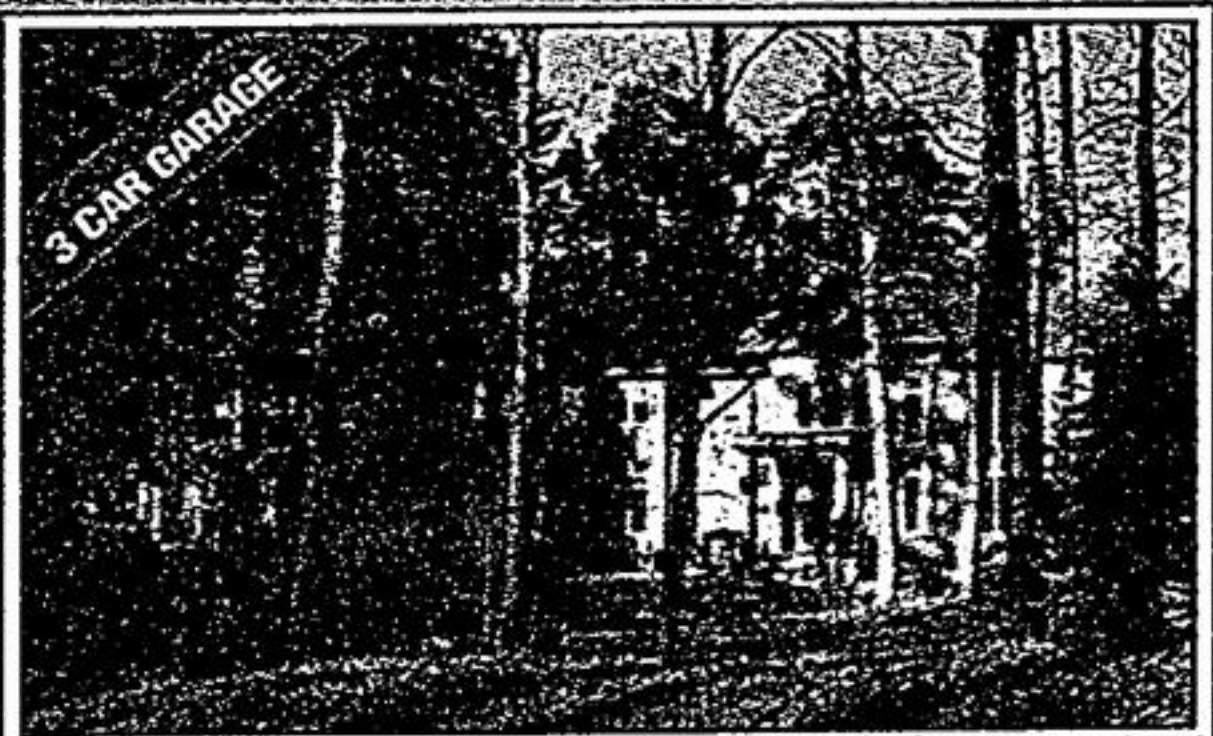
See it with Sylvia Houghton\* & Derek Houghton\*\*, 905-947-9300



**TRAIL OF THE WOODS \$1,277,000**

Quality built executive home shows to perfection, approx 5250 sq.ft. on 1 1/2 acres. Custom designer kitchen with granite, centre island, fireplace, sunken family rm, formal din rm, library, walk-out bsmt & so much more.

Call Sylvia Houghton\*, 905-947-9300



**EXECUTIVE HOME ON 2 ACRES \$1,295,000**

Ravine, trees, pool, custom built designer home, meticulous attention to detail, 5 bdrms, 4 bths, this home invites entertaining, granite, slate, balconies, Jacuzzi tub. This home has it all! Come see for yourself, you'll fall in love!

Call Sylvia Houghton\* or Sherry Hayes\*, 905-947-9300



**264 MAIN ST., UNIONVILLE \$1,398,000/OR LEASE \$5,900**

Fabulous from the word "Go". Sunroom, library, private master suite, 5 bdrms, 7 bths, fin bsmt, gourmet kit with upscale appliances. Art studio plus fabulous views backing onto Toogood Pond.

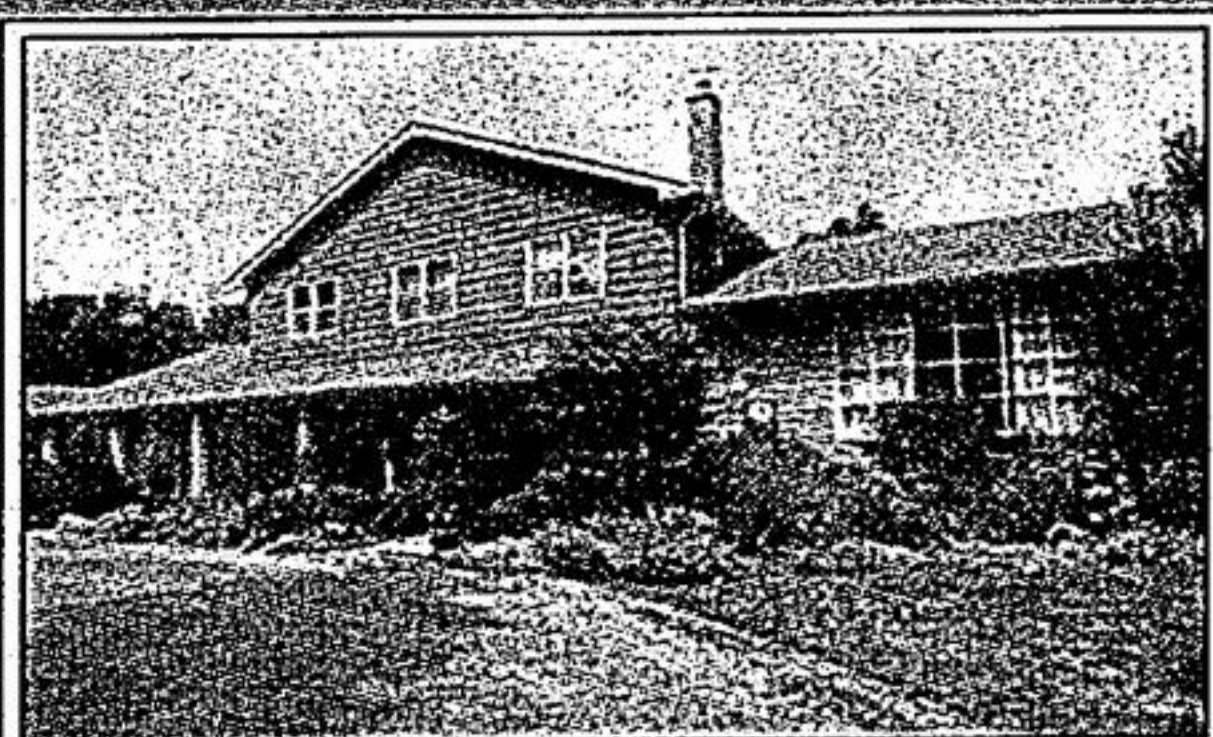
Call Sylvia Houghton\*, 905-947-9300



**CACHET MANSION ON APPROX. 1 1/2 ACRE \$1,888,000**

Fit for a King & Queen with over \$500k in renovations & additions. 1/2 pool, 6,000 sq.ft. of perfection, 5+ bdrms, 7 bths. Entertain in grand style.

See it with Sylvia Houghton\*, 905-947-9300



**1/2 ACRE BOTANICAL GARDENS 'VILLAGE' \$698,000**

A one of a kind "Keter Built" custom home, approx 3,000 sq.ft. on 4 levels, 4 bdrms, 3bths, "Beckerman" kit, custom deck, garden shed + fabulous 24'x12' outdoor heated cedar workshop, circular drive with attached gar + prkg for 6 cars. Don't miss this great home.

Call Sylvia Houghton\*, 905-947-9300



**48 JOHN LYON'S \$797,000**

Strictly suited to your fine taste, situated on quiet court overlooking ravine, amazing larger kitchen, formal liv & din room; ensuites for all 4 bdrms, 2nd flr lndry, prof fin bsmt, unconfined elegance.

Call Sylvia Houghton\*/Katherine Morgan\*, 905-947-9300



**1 ACRE BACKS TO GOLF COURSE \$898,000**

"Sleepy Hollow" executive, 4 bdrms, 4 bths, 3 car gar, centre hall plan. Shows to perfection. Many, Many upgrades inside, hand manicured lawns outside + inground pool, custom deck, cabana & wonderful views of T.O.

Call Sylvia Houghton\*, 905-947-9300



**GRACIOUS LIVING IN CACHET ESTATES \$1,248,000**

A limited edition. Circular drive, prof fin bsmt & custom bar & washrm. Elegant & gracious kit with cabinets galore, 6 appl, 4 fireplaces. This regal home has 3 car gar, prof landscaped, fenced yard plus so much more.

Ready for your personal tour? Call Sylvia Houghton\*, 905-947-9300



**"THE ART SHOPPE" \$609,900**

High demand area in Stouffville!! Designer décor, open concept, hrdwd, custom kit, formal din rm, 4 bdrms, prof fin bsmt, hot tub, cabana with 2pc bath. "A must see!!"

Call Sylvia Houghton\* or Sherry Hayes\*, 905-947-9300



**"THE ART SHOPPE MOVED TO HARPER HILL" \$627,000**

Prof landscaped front & back on executive crt, 4 bdrms, 3 bths, quality hrdwd flrs, pot lights, centre island kitchen, mn flr family with fireplace. A beautiful home, don't miss out!

Call Sylvia Houghton\*, 905-947-9300



**12 JEWETT'S \$658,000**

Make a grand escape to this 4 bdrm home with 3 car gar on a 63'x202' lot, prof finished basement with 2nd kitchen & service stairs from garage, 3 fireplaces, roof 2004.

Call Sylvia Houghton\*/Katherine Morgan\*, 905-947-9300



**'OLD UNIONVILLE' EXECUTIVE 37 FOXMEADOW CRES. \$693,000**

Upscale neighbourhood with gourmet shopping close by. This "John Silver" model with 4 bdrms, 4 bths, shows to perfection. French drs; skylite, 2 fireplaces, fin bsmt inside, prof landscaped outside. A must see!

Call Sylvia Houghton\*, 905-947-9300



**KINGS BAY!! SEAGRAVE - \$538,800**

Sprawling 2800+ sq.ft. bungalow. Fantastic views of the lake. Features hardwood, open concept, 2 fireplaces, prof finished walkout basement, "showsto perfection".

Call Sylvia Houghton\*, 905-947-9300



**31 JOHN DEXTER PLACE \$528,800**

Credit to its neighbourhood, this 4 bdrm, delightful home sits on a 66'x100' lot in Sherwood Estates, fabulous upgraded kitchen open to fam rm, granite countertops, renovated bths, newer roof & vinyl windows, walk to schools, parks & hospital.

Call Sylvia Houghton\*/Katherine Morgan\*, 905-947-9300



**KATHERINE CRES. BUNGALOW!! \$558,000**

Beautiful quality built bungalow in demand area of Stouffville, fantastic layout!! Open concept, cathedral ceiling, hardwood flrs, mn flr library, formal dining room, prof finished basement +++

Call Sylvia Houghton\*/Sherry Hayes\*, 905-947-9300



**MAGNIFICENT MARKHAM VILLAGE \$548,800**

Backs to park this 4 bdrm, 3 bth home with mn flr fam rm with fireplace & fin bsmt shows like the "Art Shoppe". Prof landscaping front & back & complete with Mayfair inground kidney shaped pool with built-in hot tub. A gorgeous home on sought after court.

Call Sylvia Houghton\*, 905-947-9300



**REEVE DRIVE - 3360 SQ. FT! \$567,000**

This Yorkwood built executive home in the "Rosedale" of Markham village with 4 spacious bdrms, 4 bths, mn flr library and fam rm is neutral & immaculate in every detail. New broadloom in July '05. Open staircase to bsmt, walk in cedar closet plus so much more.

Call Sylvia Houghton\*, 905-947-9300

