

## Stouffville Says

By Hannelore Volpe

### What impact are high gas prices having on you?

— Asked at the Giant Tiger store in Stouffville Tuesday

Tara CLARKSON



It is getting harder to pay for gas to come in to work. We give gas money to whoever is driving when I am out with my friends.

Dawna THOMPSON



We had planned on going out east on vacation, but cancelled the trip because the drive would be too expensive. We are renting a cottage instead.

John CHMIELORZ



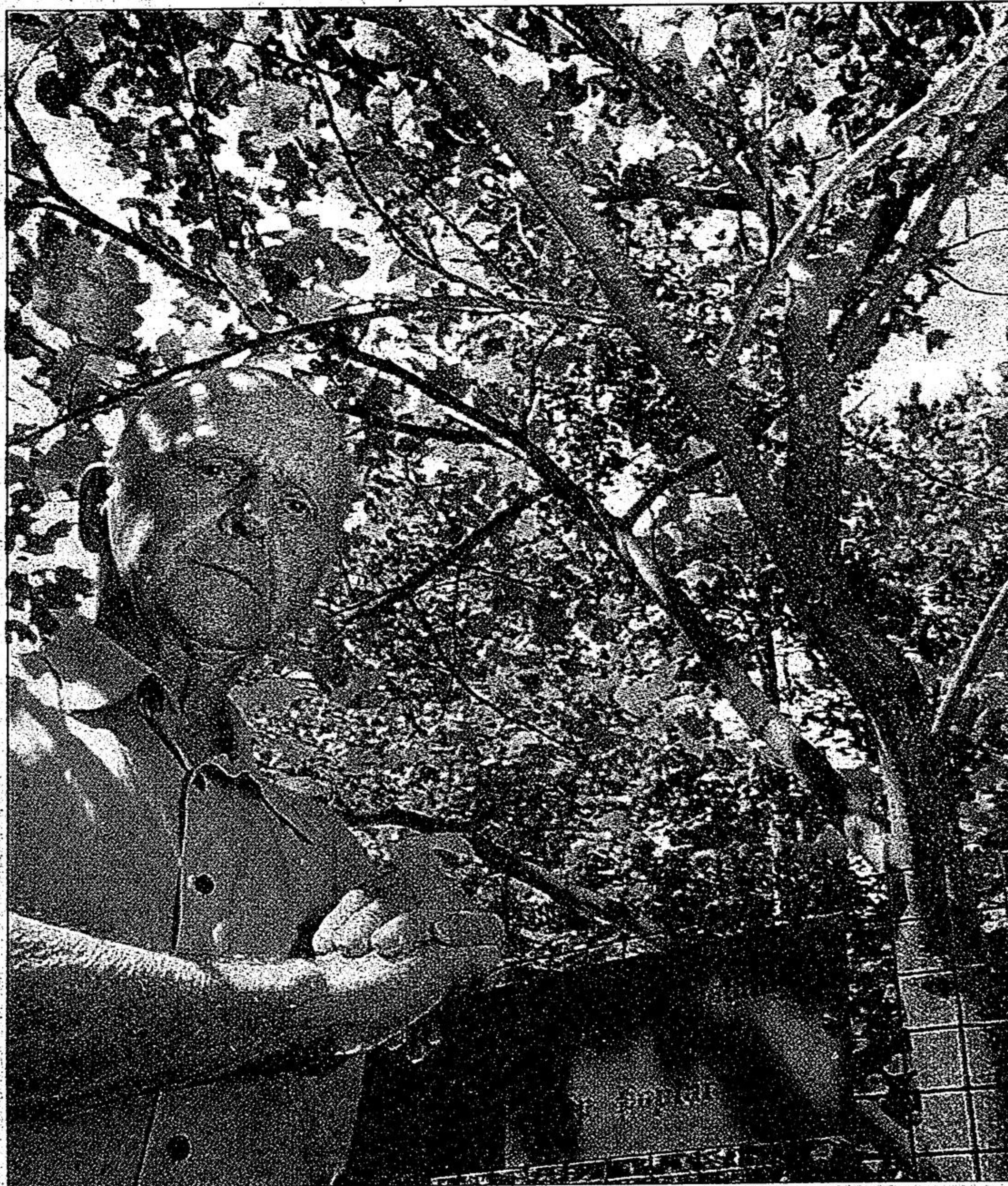
The price of gas is so high, when you travel, you have less money left over to spend when you get to your destination. It hurts the local economy if it is tourist-oriented.

Kristi INGRAM



I just stopped driving around like I usually did. I can't really afford to fill up at 101 or 102 cents per litre. It is ridiculous.

## From the moon to Whitchurch-Stouffville



STAFF PHOTO/SJOERD WITTEVEEN

Peter Hunchak grew this President George Washington tulip poplar on his property on Hwy. 48 in Whitchurch-Stouffville from a seed from the Washington groves in Virginia. He'll host a free open house this weekend at his farm north of Ballantrae.

## Trees have historic roots

BY HANNELORE VOLPE  
Staff Writer

Tree farmer Peter Hunchak is opening his farm to the public this weekend to see the offspring of such famous trees as the one that stood in front of Martin Luther King's church when he was giving fiery civil rights speeches in the 1960s.

Eight famous and historic trees have been carefully raised and tended by Mr. Hunchak at his farm at 16621 Hwy. 48, north of Ballantrae.

Visitors are invited to see them Aug. 20 and 21 from 8 a.m. to 6 p.m.

There is no charge.

The trees have been raised from young saplings imported from The American Forestry Association's Global Relief program. The non-profit organization encourages people to grow historic trees.

Among Mr. Hunchak's collection is:

- The Moon sycamore, which comes from seeds carried to the moon aboard Apollo 14 in 1971 by astronaut Stuart Roosa.

- The Martin Luther King, Jr. sycamore came from seeds of the tree that still stands in front of his church, Brown Chapel AME in Selma,

Alabama. Mr. Hunchak's tree is now close to 40 feet high.

- The President Washington Tulip Poplar is the descendant of one of the trees planted by George Washington in 1785. An avid tree planter, Washington planted groves of trees at Mount Vernon, his home on the Potomac River in Virginia.

Mr. Hunchak began raising the famous trees in the early 1990s. Historic trees are very popular with youngsters in the U.S., he noted.

He has operated a Christmas tree farm since 1947 and also has 200 black walnut trees on his property.

## Briefly

### Boat accident victim improving in hospital

A Stouffville woman who was seriously injured in a boating accident almost two weeks ago is on the long road to recovery.

Jane Dodds was moved from critical care to intensive care, her husband, David Dodds, said.

The accident occurred during a fishing trip on Salmon Lake in Galway-Cavendish-Harvey Township, between Minden and Peterborough, when the Dodds' boat was run over by another boat towing skiers. The ski boat went partly over the top of the Dodds' boat, leaving Mrs. Dodds with serious injuries. After being rushed by ambulance to a hospital in Minden, Mrs. Dodds was airlifted to the Sunnybrook Health Sciences Centre in Toronto.

Doctors will give some indication this week about how long Mrs. Dodds will stay in hospital.

"She is a whole lot better spiritually than a week ago," Mr. Dodds said.

She was on a ventilator for the first few days after the accident, but was able to speak when it was removed.

It appears she will make a good recovery from her injuries, her husband said.

No charges have been laid.

— Hannelore Volpe

### Rain postpones car show

They'll try again this Sunday at the Whitchurch-Stouffville Museum in Vandorf.

The museum's 32nd annual antique and classic car show was called off Sunday due to rain and rescheduled for this weekend. The show runs from 11 a.m. to 4 p.m.

The museum is at 14732 Woodbine Ave. Museum buildings will be open and there will be a magician, music and refreshments.

Cost is \$5 per person or \$12 for a family of four. Children under seven free. Call 905-727-8954 or 1-888-290-0337.

## Quoteworthy

**'There are a lot of families that consider him almost family.'**

Teresa Kusatz, on retiring priest Leslie Tamas. See story on page 1.

## Contacting Us

Have a news tip? Please:

- phone us at 905-640-2612
- e-mail us at [jmason@yrng.com](mailto:jmason@yrng.com)

**Chapel Ridge**

FUNERAL HOME & CREMATION CENTRE

Pre-Arrangement Makes Sense!

905-305-8508

8911 Woodbine Avenue, Markham, Ontario L3R 5G1  
E-mail: [info@chapelridgefh.com](mailto:info@chapelridgefh.com) • [www.chapelridgefh.com](http://www.chapelridgefh.com)

MAKING PART OF OUR COMMUNITY



Ford, joined by his wife and Suzanne Spender