

# PRICE MELTDOWN



Pwr. Steering Pwr. Windows

Pwr. Mirrors

Automatic

Cruise Control

Color Keyed Bumpers

Pwr. Locks

Tinted Glass

All Season Tires

## 2005 DODGE CARAVAN

Cash Purchase a 28S Pkg. For **\$19,995**

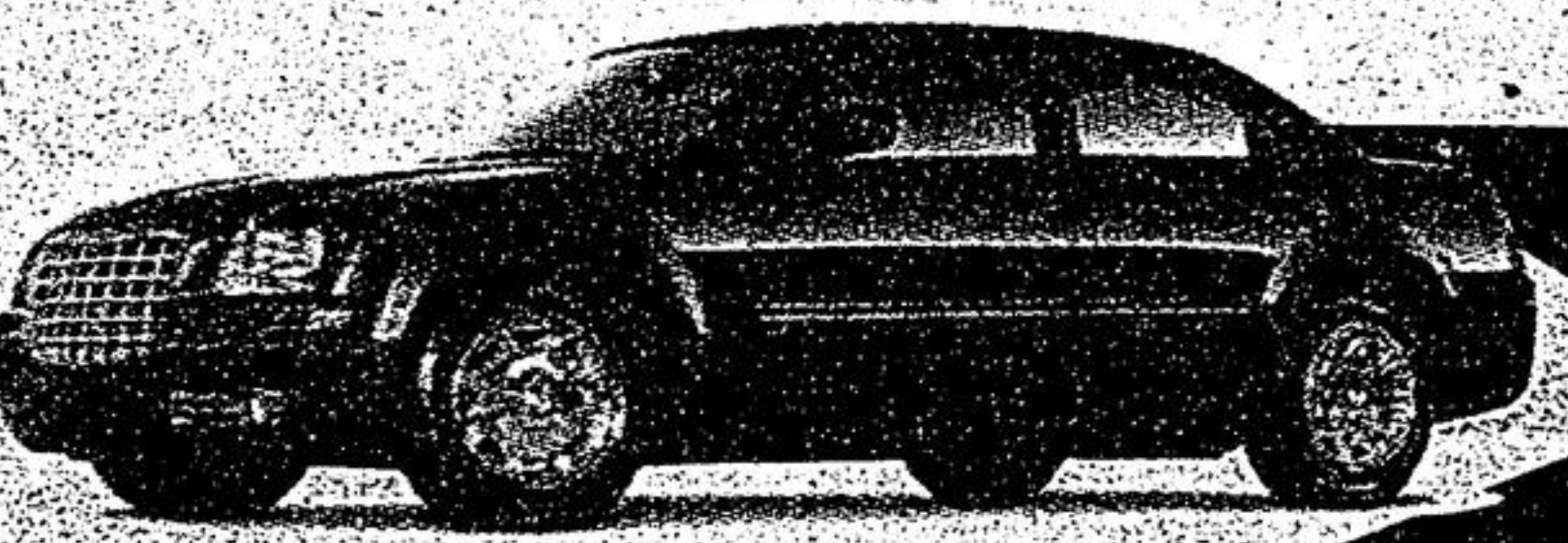
Lease a 28S For **\$199** mth/48 mths. \$4,995 down

or **0%** Purchase or Lease Financing 60 mth. purchase PLUS purchase finance, 48 mth. lease, \$3,200 GKL cash.

**FOR ONLY \$14 MORE PER MTH. GET A GRAND CARAVAN**

**TO ALL CHRYSLER CUSTOMERS**  
 IF YOUR LEASE EXPIRES BEFORE MARCH 31ST, 2006  
**WE WILL**  
 Waive All Your Payments & Get You Into A BRAND NEW Chrysler, Dodge or Jeep Vehicle & YES we WILL HELP you with over mileage and scratches. JOIN THE HUNDREDS WHO ALREADY DID SO BE ONE OF THEM!!

## 2005 CHRYSLER 300



Cash Purchase a 26H Pkg. For **\$29,995**

Lease a 26H For **\$399** mth/48 mths.

With **\$0** Down Payment

## 2005 JEEP GRAND CHEROKEE



Cash Purchase a 26E Pkg. For **\$35,488**

Lease a 26E For **\$298** mth/39 mths. \$5,595 down

or **0%** Purchase or Lease Financing for 24 months

## 2005 CHRYSLER PACIFICA



Lease a 28H For Only **\$294** per mth /24 mths with \$3995 Down

## 2005 SX 2.0



INCLUDES AUTO & AIR

Cash Purchase a 21DPkg. For **\$12,998**

Lease a 21D For **\$185** mth/60 mths.

or **0%** Purchase or Lease Financing 60 mth. purchase, 60 mth. lease.

## 2005 JEEP LIBERTY SPORT



4X4, Auto, air, PW/PL/PM, keyless entry, plus much more.

Lease a 28B For Only **\$289** per mth /39 mths with \$0 Down

All rebates have been assigned to dealer. Special finance or special lease cannot be combined with Cash Back offers. All financing through Chrysler Financial. All leases based on 20,400 km/year allowance; excess 15¢ over mileage.



**8280 WOODBINE AVE MARKHAM**

(SOUTH OF HWY#7 WEST SIDE ACROSS FROM COSTCO)

**1-800-409-5074**

