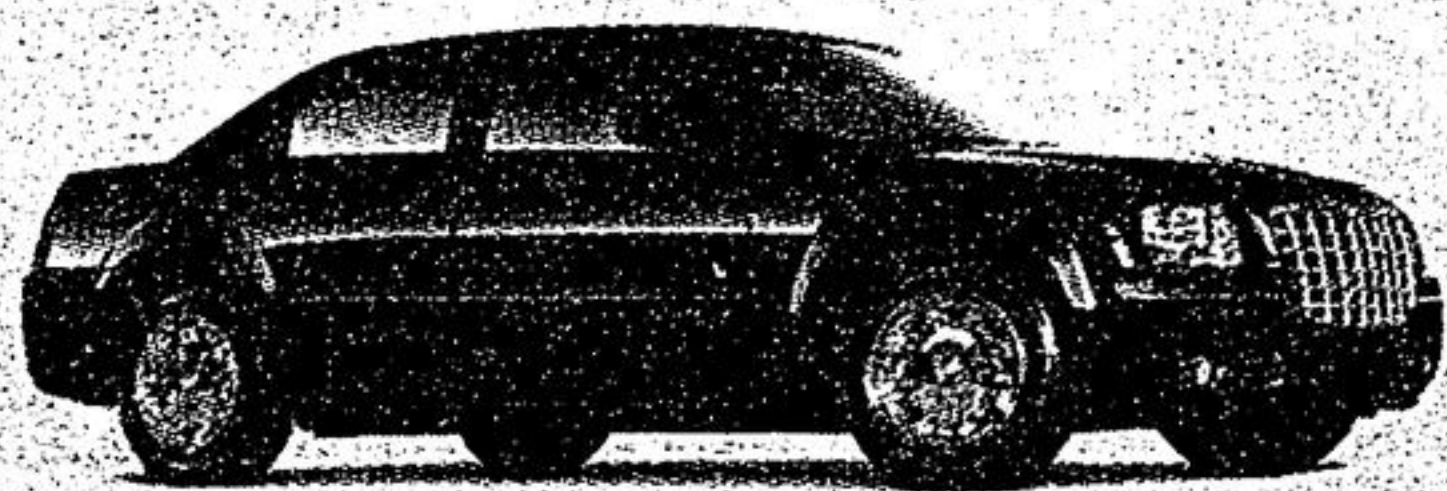


# PUBLIC NOTICE TO ALL CHRYSLER CUSTOMERS

**IF YOUR LEASE EXPIRES BEFORE MARCH 31ST, 2006  
WE WILL**

**Waive All Your Payments & Get You Into A BRAND  
NEW Chrysler, Dodge or Jeep Vehicle & YES we  
WILL HELP you with over mileage and scratches.**

**JOIN THE HUNDREDS WHO ALREADY DID SO  
BE ONE OF THEM!!**



### 2005 CHRYSLER 300

Cash Purchase a 26H Pkg. for **\$29,995** or Lease a 26H Pkg. for **\$395** mth/48 mths. with **\$0** Down Payment



### 2005 JEEP LIBERTY SPORT

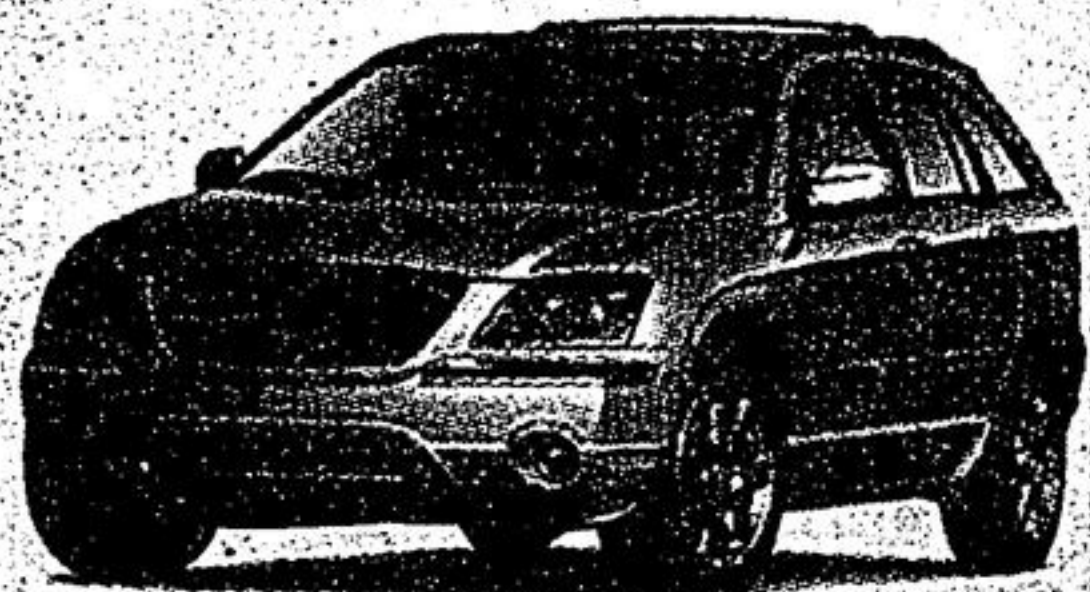
4X4, Auto, air, PW/PL/PM, keyless entry plus much more.

Lease a 28B Pkg. for **\$289** mth/39 mths with \$0 Down



### 2005 JEEP GRAND CHEROKEE

Cash Purchase a 26E Pkg. for **\$35,488** or **0%** Purchase or Lease Financing 36-Month Purchase Plus \$2000 Purchase Cash, 24-Month Lease Plus \$2000 GKL Cash or Lease a 26E Pkg. for **\$298** mth/39 mths. with \$595 Down



### 2005 CHRYSLER PACIFICA

Lease a 28H For Only **\$294** mth/24 mths with \$395 Down



### 2005 SX 2.0

Cash Purchase a 24D Pkg. for **\$12,998** or **0%** Purchase or Lease Financing 60-Month Purchase, 60-Month Lease or Lease a 24D Pkg. for **\$185** mth/60 mths. with \$0 Down

**INCLUDES AUTOMATIC & AIR COND.**

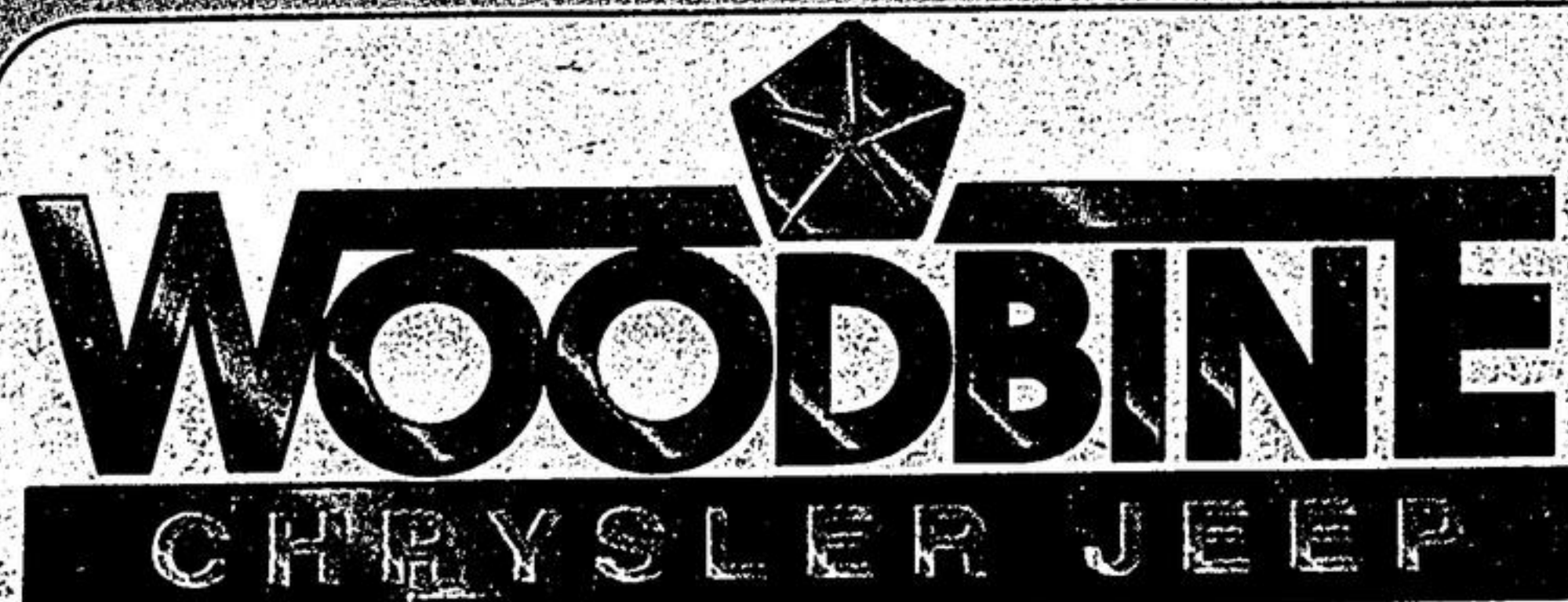


### 2005 DODGE CARAVAN

Cash Purchase a 28S Pkg. for **\$19,995** or **0%** Purchase or Lease Financing 60-Month Purchase Plus Purchase Finance 48-Month Lease \$3200 GKL Cash or Lease a 28S Pkg. for **\$199** mth/48 mths. with \$4,995 Down

**FOR ONLY \$14 MORE PER MONTH GET A GRAND CARAVAN!**

All rebates have been assigned to dealer. Special finance or special lease cannot be combined with Cash Back offers. All financing through Chrysler Financial. All leases based on 20,400 km/year allowance; excess 15¢ over mileage.



**8280 WOODBINE AVE  
MARKHAM**

(SOUTH OF HWY#7, WEST SIDE,  
ACROSS FROM COSTCO)

**1-800-409-5074**

