

"#1" AGENT IN MARKHAM/UNIONVILLE

*"#1" In Canada
"9" Consecutive Years
"#1" in Markham/Unionville 2004*

Thank You Markham/Unionville



Sherry Hayes
Sales Representative

Katherine Morgan
Sales Representative

Sylvia Houghton
Sales Representative

Derek Houghton
Broker/Owner

905-947-9300

MOVE UP TO THESE HOMES AND "SYLVIA HOUGHTON" WILL BUY YOUR HOME FOR CASH

MOVE UP TO THESE HOMES AND "SYLVIA HOUGHTON" WILL BUY YOUR HOME FOR CASH



SAT & SUN 2:00 - 4:00PM
OPEN HOUSE

4 KING ARTHUR'S CRT, MARKHAM \$577,000
"SALT WATER INGROUND POOL" approx \$50,000+ spent in the backyard!!! 4 bdrm home, formal liv rm & din rm, spacious family rm with w/o to solarium "FANTASTIC COURT LOCATION"
Call Sylvia Houghton*, 905-947-9300



SUNDAY 2:00 - 4:00PM
OPEN HOUSE

SPRING HAS SPRUNG! \$349,800
in this truly botanical garden surrounding this classy 4 level sidesplit in sought after 'Village' 4 beds, 3 baths. New upgraded pretty kitchen, family rm with fireplace & w/o to deck plus so much more, see it with
Call Sylvia Houghton*, 905-947-9300



SUNDAY 2:00 - 4:00PM
OPEN HOUSE

AMAZING 178' LOT ON 28 ADDINGTON SQUARE \$658,000
4 plus bdrms, 4 baths, formal liv & din, fabulous family sized kitchen overlooking botanical gardens and inground "pool" on 178ft deep lot. Complete with cabana, finished basement. All in the heart of Unionville.
Call Sylvia Houghton*, 905-947-9300



SUNDAY 2:00 - 4:00PM
OPEN HOUSE

HOT! HOT! HOT! IN UNIONVILLE 15 MCKAY CRES \$849,000
Fabulous home on fabulous pie-shaped private lot with Norlander inground pool, upgraded kit w/centre island, com'd liv & din rm, 21'x13' sunrm off kit, magnificent rec rm, walk to pond & Main Street, Don't delay.
Call Sylvia Houghton*, 905-947-9300



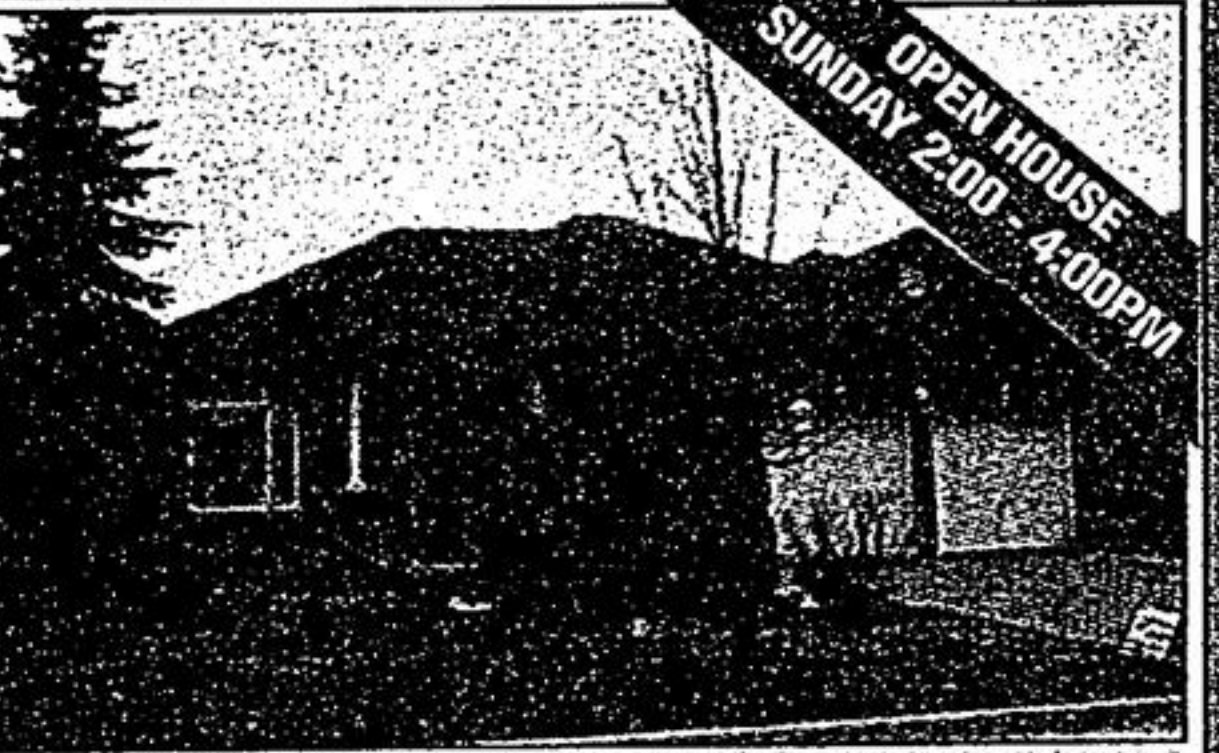
OPEN HOUSE SUNDAY 2:00 - 4:00PM

WOW 40' X 264' LOT INGROUND POOL! 6690 MAIN STREET, STOUFFVILLE \$347,000
Immaculate 3 bedroom bungalow on a fantastic lot!!! Shows to perfection!!! 3 bathrooms, finished basement, \$\$\$ spent on landscaping "Mint Condition"
Call Sylvia Houghton*, 905-947-9300



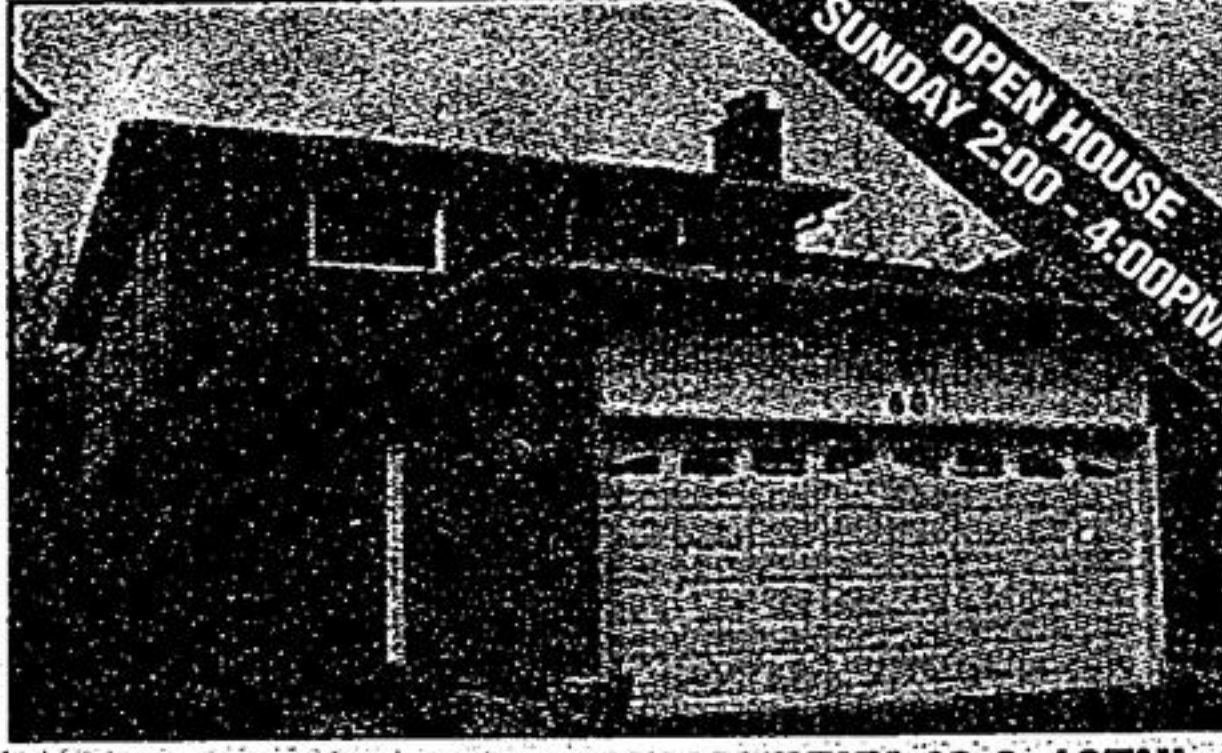
SUNDAY 2:00 - 4:00PM
OPEN HOUSE

4 OLD MILL LANE GOODWOOD \$529,000
"A MUST SEE"!! 2700 sq.ft. custom built bungalow features 4 bdrm, cathedral ceilings, open concept, formal din rm, 4 sided fp, w/o bsmt "4 CAR GARAGE"
Call Sylvia Houghton* or Sherry Hayes*, 905-947-9300



SUNDAY 2:00 - 4:00PM
OPEN HOUSE

64 KATHERINE CRESCENT EXECUTIVE LIVING IN STOUFFVILLE \$539,000
Amazing bungalow in upscale neighbourhood. Outstanding inside and out. Fabulous gourmet kitchen open to family room. Cathedral ceilings: Prof fin bsmt situated on pretty lot with wonderful accents.
Call Sylvia Houghton*, 905-947-9300



SUNDAY 2:00 - 4:00PM
OPEN HOUSE

60 BISHOP CRES, MARKHAM (HWY 48 & 16TH) \$348,800
3 large bedrooms w/4 pc's ensuite, main flr fam rm w/lp, updated eat-in kit, gorgeous 4 season solarium overlooks large pie-shaped lot, fully finished basement.
Call Derek Houghton**, 905-947-9300 or www.derekhoughton.com



CENTURY CHARM ON MAIN STREET \$448,000

Close to all amenities this lovely home with large spacious Country kitchen, main flr fam rm, large custom deck, botanical garden and detached 2 car garage in Markham Village is a great opportunity to own a heritage home
Call Sylvia Houghton* 905-947-9300



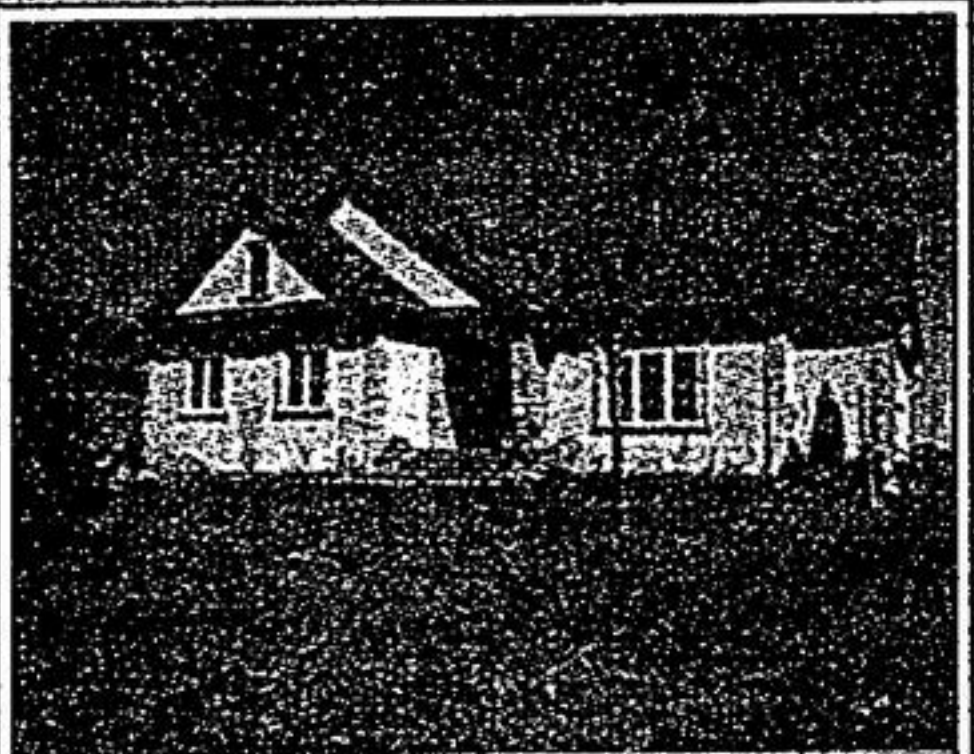
INVEST IN UNIONVILLE \$398,000

Close to 407/404 walk to golf, shopping and entertainment on Main St Unionville. Over \$40,000 spent in renovations, Mature treed large yard. Plenty of parking, 4 spacious bedrooms and main floor office.
Call Sylvia Houghton*, 905-947-9300



BEAUTIFULLY UPGRADED WALK TO MAIN & "GO" \$313,800 MARKHAM VILLAGE

Minutes from all amenities this all brick home with in Vogue decor has 3 bdrms, w/o to deck from liv rm, fenced yard. Immaculate and beautifully maintained thru-out, come on out, all the work's been done!
Call Sylvia Houghton*, 905-947-9300



"GOLF", "SWIM" & "FISH" SPRAWLING 2600+ SQ. FT. CUSTOMIZED BUNGALOW SEAGRAVE \$558,000

Gorgeous "Views" of the lake!! Quality galore, hardwood floors, b/l appls, fps, w/o bsmt, professionally finished. Located in "King's Bay"
Call Sylvia Houghton*, 905-947-9300



23 FALDO'S FLIGHT BALLANTRAE \$485,000

Quality galore, hardwood flrs, ceramics, 2 bdrms plus den "Castle Pines Model" Open concept, fireplace!! Located in Ballantrae Golf & Country Club. Enjoy Adult lifestyle living! Maintenance fee's include snow removal, lawn/maintenance, use of the rec centre & more.
Call Sylvia Houghton*, 905-947-9300



6000 SQ. FT.

30 GREENVALLEY CIRCLE WHITCHURCH/STOUFFVILLE \$1,288,000

Outstanding American Architect!! Features 6 bdrms, 5 baths, open concept kit/liv rm, formal liv/din rms, mbr is on main flr, mn flr library, w/o basement. 1.79 acres in Trail of the Woods!
Call Sylvia Houghton*, 905-947-9300



LOCATION - LOCATION - CHAMBERLY! \$827,000

The Henry Summerlet with 3rd story lot in the most sought after location in Unionville! 2 firs, fin bsmt, formal living and din, hrdwd flrs in 5 principal rooms. Fabulous treed lot with inground pool plus so much more, its prime, prime, prime!
Call Sylvia Houghton*, 905-947-9300



LIMITED EDITION - 30 ANGUS GLEN BLVD \$648,000

9' ceilings on main level. French doors, pillars, extra wide hrdwd flrs upstairs & main flr. W/O's to balconies, gas fireplace, the list goes on, all beautifully maintained and immaculate from the word go.
Call Sylvia Houghton*, 905-947-9300



EXQUISITE PROPERTY STOUFFVILLE \$628,800

Fantastic location "Katherine Cres" - Wow!! Unbelievable backyard with inground Belz pool, cabana with 2 pc HOT. Tub & \$\$\$ spent on landscaping, Approx \$140,000+ on upgrades! Quality galore, prof fin bsmt.
Call Sylvia Houghton*, 905-947-9300



MARKHAM'S ROSEDALE \$575,000

Fabulous Reeve Dr, The Kinsley Model! 4 plus beds, 4 washrms, finished bsmt, greenhouse kit with w/o to deck. Many upgrades in this immaculate executive home with bonus inground pool.
Call Sylvia Houghton*, 905-947-9300



BACKS TO ANGUS GLEN GOLF COURSE & POND \$1,388,000

Unbelievable views overlooking pond & golf course!! 4200sq.ft. plus 1100sq.ft. in w/o bsmt. Custom designer kitchen, granite counters, Open Concept, fireplaces, high ceilings, 4 bdrm, 4 bathrooms.
Call Sylvia Houghton*, 905-947-9300



HALLMARK OF ELEGANCE 19 BLUE RIDGE TR \$1,448,000

Kennedy/Aurora SdRd. Trail of the Woods, exceptional custom 8000sq.ft. home including prof fin w/o bsmt, 5+2 bdrms, 7 bathrooms, 9' ceilings, library, hrdwd flrs, all this & much, much more on 1.86 acres on court.
Sylvia Houghton* or Katherine Morgan*, 905-947-9300



ITS COVER MAY BE PRETTY BUT ITS CONTENTS AMAZING! \$1,498,000

A true "WOW" from the moment you step inside this incredible 5 bdrms, 7 washrm home includes gourmet kitchen with all the chef's needs, plus large and elegant family room, plus sunroom plus library plus art studio, backing onto TooGood pond this home is a plus, plus, plus. Must see.
Sylvia Houghton* 905-947-9300



71 GREEN VALLEY CIRCLE WHITCHURCH/STOUFFVILLE \$1,388,000

Custom built 5250 sq.ft. executive home on 1.5 acre backing a 22 acre protected greenbelt. Designer kitchen with granite counters, centre island, fireplace. A must to see!
Call Sylvia Houghton*, 905-947-9300



2 ACRES, TREES, RAVINE POOL, TOO! \$1,295,000

Meticulous attention to detail abounds in this interior decorator's custom 5 bdrm home. The easy flow of design is perfect for entertaining or accommodating a large family w/classy touches of granite, slate & a spanish clay roof.
See it today with Sylvia Houghton*, 905-947-9300

