

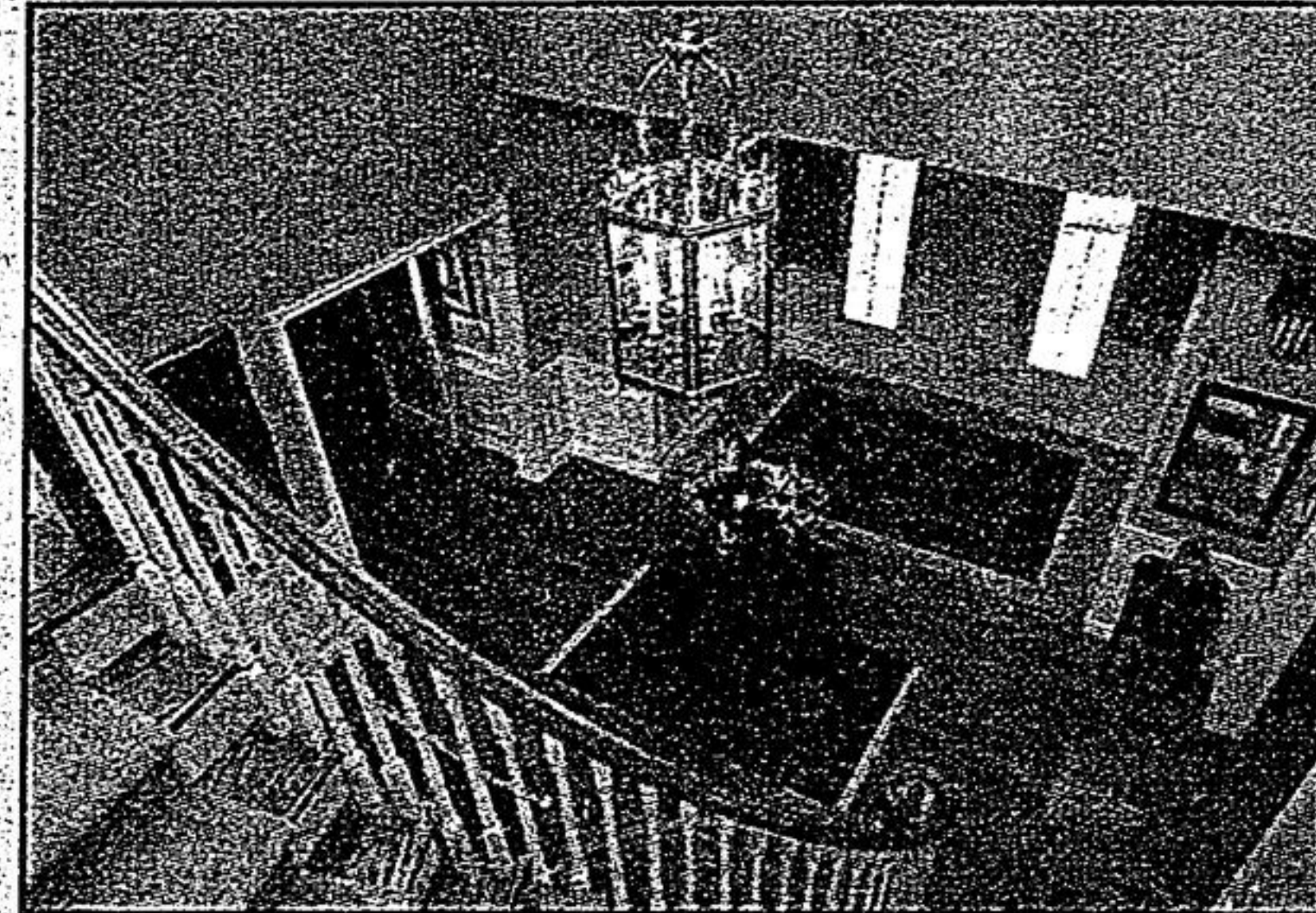
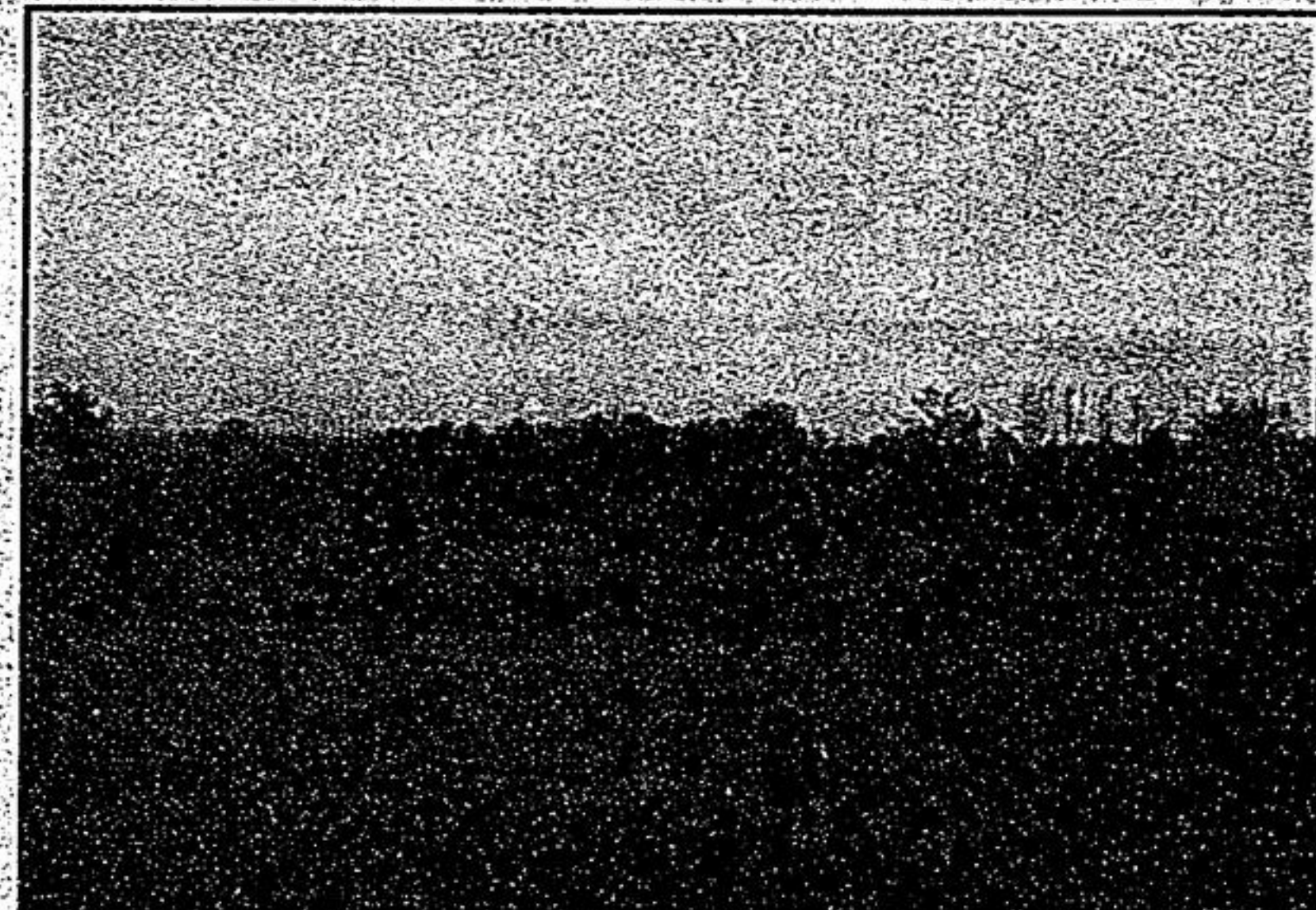
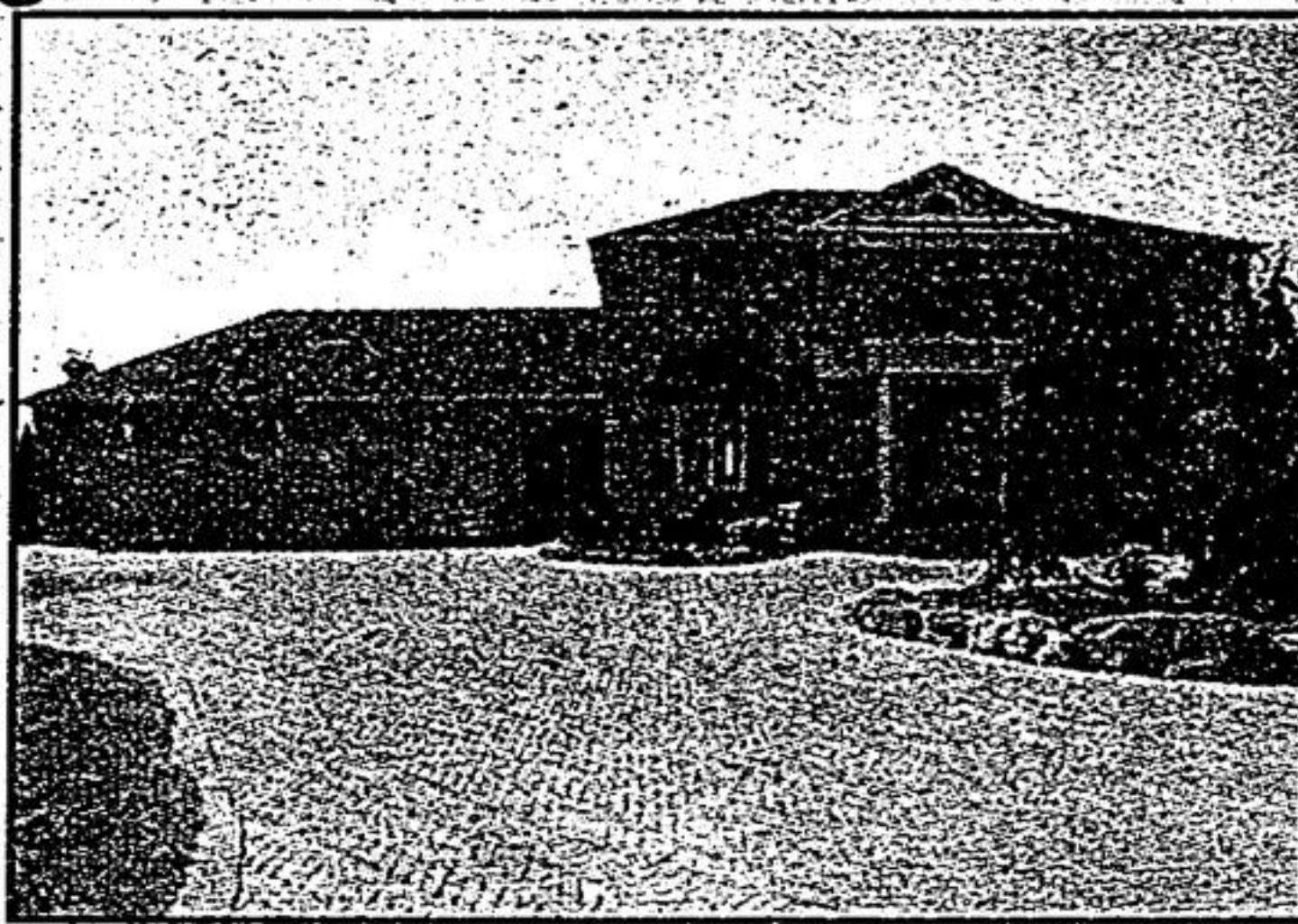
RE/MAX CLASSIC PROPERTIES ~ RE/MAX CLASSIC PROPERTIES ~ RE/MAX CLASSIC PROPERTIES ~ RE/MAX CLASSIC PROPERTIES ~ RE/MAX CLASSIC PROPERTIES

# HOME OF THE WEEK! NEW LISTING!

## One Magnificent Acre Backing to York Downs Golf Course ~ \$1,495,000



**LESLEY  
DIVERS**  
Sales Representative  
**(905) 947-9300**  
**RE/MAX**  
CLASSIC PROPERTIES INC.



- \* Spectacular home & property meticulously maintained!
- \* Incredible views from all windows!
- \* Open Concept Kit & Fam Rm!
- \* Stunning Slate, Hardwood, Granite and Marble Flooring!
- \* Completely Fin Lower Level features Large Above Ground Windows, Rec/Games Rms, Custom Wet Bar, Granite Dance Flr, Gas Fp, 5th Bdrm w/ 5-Piece Ensuite & Sauna!
- \* 2 Newer Furnaces & Central Air Conditioners!
- \* Massive 3-Car Garage with 9Ft Doors!
- \* View this special home at: [www.360house.com/173841](http://www.360house.com/173841)

RE/MAX CLASSIC PROPERTIES ~ RE/MAX CLASSIC PROPERTIES ~ RE/MAX CLASSIC PROPERTIES ~ RE/MAX CLASSIC PROPERTIES ~ RE/MAX CLASSIC PROPERTIES



### L.H. LIND REALTY INC.

Service with Professionalism 905-841-0000 416-410-8223  
**AURORA'S #1 SALES PRODUCER**  
[lenard@lhindrealty.com](mailto:lenard@lhindrealty.com) View virtual tour for most listings @ [www.lhindrealty.com](http://www.lhindrealty.com)

Ontario's ONLY...  
ISO 9001:2000 REGISTERED  
Residential Real Estate Office

53 Wellington St. E., Aurora  
(1 block east of Yonge)



Lenard Lind\*\*



#### BUNGALOW BEAUTY! POOL & APT!

OPEN HOUSE - SAT. & SUN. 1:00-2:30 P.M., 20 DAVIDSON RD., AURORA, Yonge to Murray to signs! Privacy! Gardener's delight! Have it all! Designer's own home! Upgrades galore! Oversized master w/sitting area! Terracotta tile and custom fireplace! Lavish landscaping! 1 bedroom in-law suite! Quiet child-safe crescent! 4 car parking & privacy!  
**\$319,000**



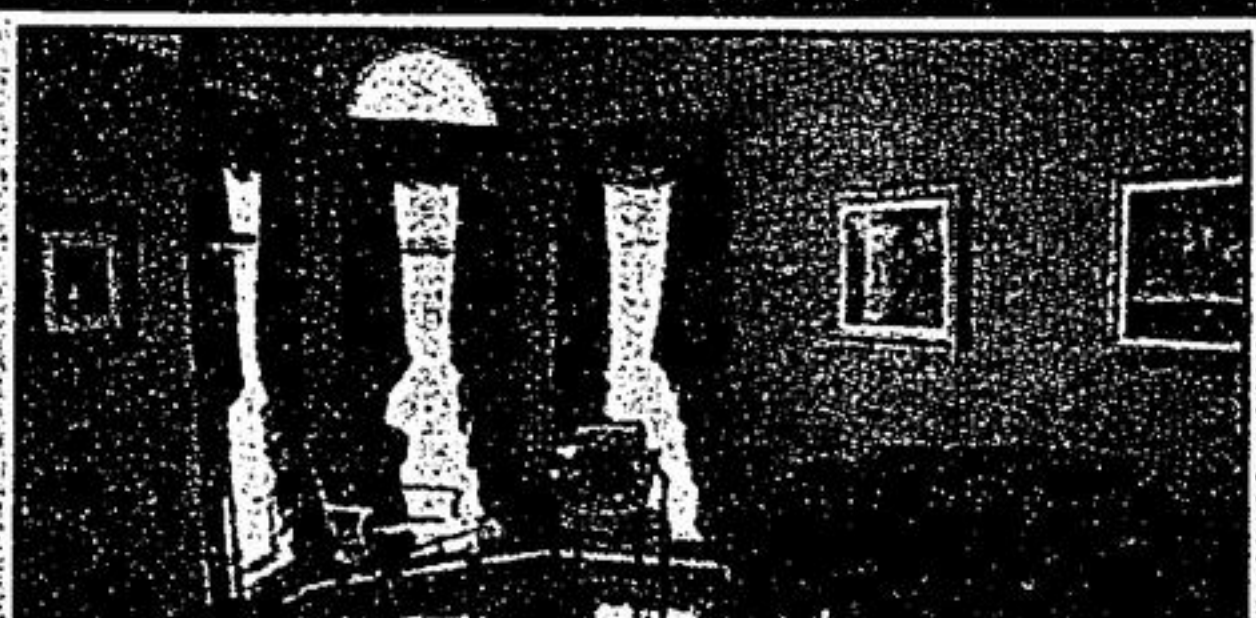
#### NORTHWEST AURORA! 50 FT. LOT + VALUE!

Child-safe crescent! Steps to schools, parks & nature trails! Spacious well-kept 3+ bdrm. executive home! Modern ceramic eat-in country kitchen! 2 storey living room and separate dining room! Ensuite and walk-in in master! Multiple fireplaces! Nicely finished basement too!  
**\$329,900**



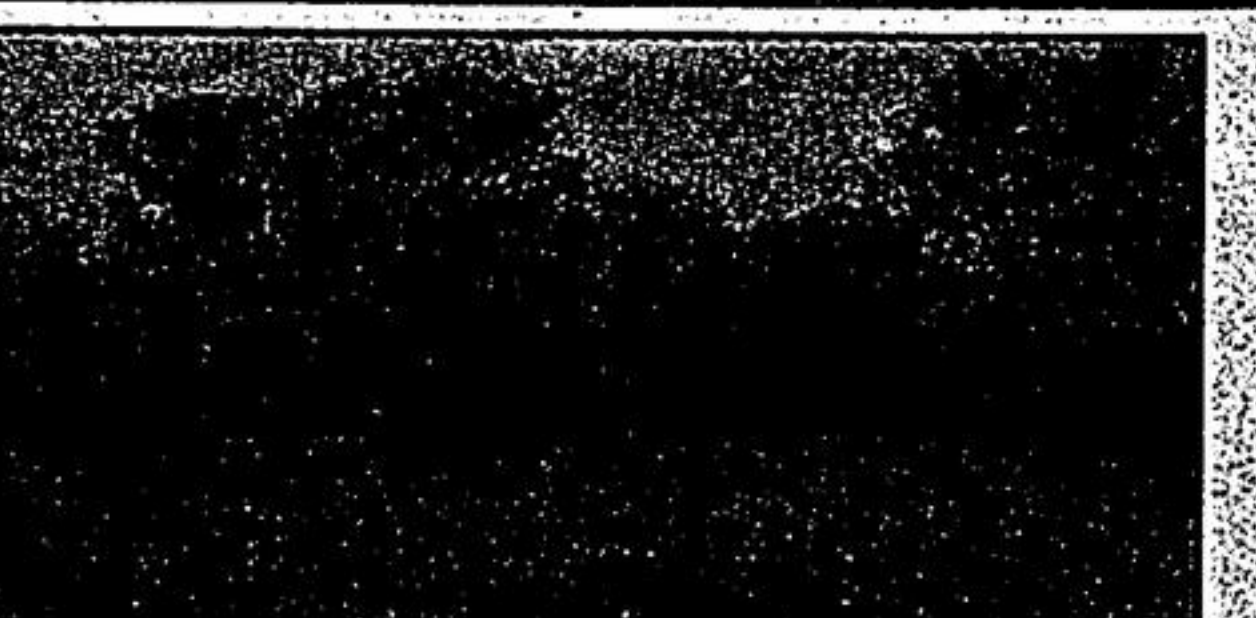
#### IMMACULATE 4 BDRM! POOL-SIZED LOT!

Bloomington and Yonge! South exposed 65 ft. lot! Shows great! Large solarium eat-in kit! Spacious fam. rm. w/ceiling-to-floor fireplace! Master w/walk-in closet & inviting ensuite! Updated windows & roof! Huge cedar deck! South exposed lot! Child-safe crescent too & more!  
**\$479,000**



#### 3300 SQ. FT. PLUS KNOCK-OUT FINISHED W/O BASEMENT!

OPEN HOUSE SAT. & SUN. 3:00-4:30 P.M., 147 CARLYLE CRES., Bathurst to McClellan Way to signs! Demand southwest Aurora! Shows great! Sunken LR w/gleaming hardwood! Formal separate DR w/coffered ceiling! Modern fam. sized kit. w/b-i appliances & solarium eat-in area open to spacious sunken fam. rm. w/hardwood strip! Enticing master w/3 way gas fpl. & inviting ensuite! Quiet child-safe crescent!  
**\$529,900**



#### "CREEK'S MEADOW" CONDOMINIUM DETACHED BUNGALOWS ON EXCLUSIVE COURT BACKING TO YOUR OWN PROTECTED 4 ACRE RAVINE!

OPEN HOUSE SAT. & SUN. 2-4 P.M. YONGE OR BATHURST TO KENNEDY TO SIGNS! Attention 'Empty Nesters' 'In-town' walk to Yonge St! 4 new 3 bedroom bungalows! 5 mins. to King Valley & King's Riding Golf Courses! All homes have exclusive use & ownership of excess 4 acre greenbelt ravine! Exclusive court location! 60 ft. lots! Stone & brick! Soaring 9 ft. ceilings! Porcelain tile on 45°! Gleaming hardwood strip! Plaster cornice moldings! Gourmet maple kitchens w/granite counters! Inviting ensuites with whirlpool baths! 2500 sq. ft. to 2700 sq. ft! Full new home warranty 7 yrs. maintenance-free lifestyle. \$265/month maintenance fee.  
**Each \$629,900**