

GALLO

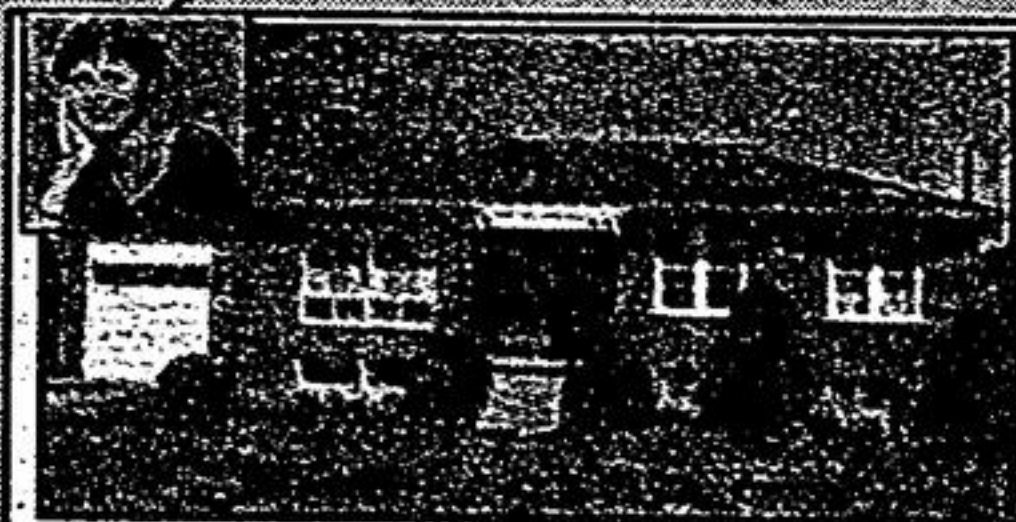
REAL ESTATE LTD
REALTOR

Est. 1975

We work for you.

905-640-1200

www.gallorealestateltd.com



FABULOUS LOT! \$305,000

Solid Brick Bungalow! Finished Basement! West End of Town! Immediate Possession Available! Kim Reesor - 905-640-1200



WORK & LIVE AT HOME!

Main Street's Finest! 5 Bedrooms - Great Room/Skylight/Fireplace/Main Floor Den/Gas Fireplace - Country Kitchen - Workshop \$429,900 Kim Reesor - 905-640-1200



BEGIN HOME OWNERSHIP HERE!

Established Neighbourhood! Live In & Rent Out Bsm't Apt! Well Maintained! Walk to Go Train - Park - School. \$299,900 Kim Reesor - 905-640-1200



DRESSED FOR SUCCESS!

One of a Kind! Thousands Spent Inside & Out! Maple Kit/Granite Maple Flrs! 2 Gas Fps - 2 W/Os to Deck - Fin Bsm't - 9' Ceilings - Landscaped! Stunning - \$569,900 Kim Reesor - 905-640-1200



ADORABLE - AFFORDABLE

Just Move in - Spotless! Updated Throughout! Appliances! Gas Fireplace - Updated Windows - Furnace - Shingles - Deck - Private Yard! Walk to Go Train! Kim Reesor - 905-640-1200



COUNTRY - PURE & SIMPLE - 5 ACRES!
Close to Regional Forest! Spacious 2 Storey - Fin W/O Bsm't! Gleaming Hrdwd Flrs! Pine Kit W/O to Deck! Trees - Pond! Great Location! \$689,900 Kim Reesor - 905-640-1200



2700 SQ.FT. - 3 CAR GARAGE!
Spacious 4 Bedroom! Separate Entrance to Inlaw Apartment - Updated Laminate Floor - Country Kitchen! \$469,900 Kim Reesor - 905-640-1200



DISTINCTIVE ARCHITECTURE! + A PRESTIGE NEIGHBOURHOOD!
Backs to Golf Course! Fabulous Flr Plan - Approx 3800 sq.ft. Plus Fin Bsm't & Inlaw Apt - Hrdwd Flrs - 9' Ceilings - Mn Flr Den - Cathedral Ceiling! Cut-De-Sac Location! \$779,900 Kim Reesor - 905-640-1200



WHY PAY RENT! \$234,900
Quaint & Cozy - 2 Bdrm - Gas Fireplace! Fabulouse 1/2 Lot - Plenty of Room to Add On - Steps to Lake! Kim Reesor - 905-640-1200



COUNTRY LIVING! CITY CONVENIENCE!
Stunning Ranch Bungalow! Panabodelos Home! Vaulted Ceilings! Picture Windows! Fin W/O Bsm't - Inlaw Apt! Updated Kit & Bath! Wrap Around Porch! 3 Car Garage - Barn! Kim Reesor - 905-640-1200



COUNTRY SOPHISTICATION! EDGE OF TOWN!
One of a Kind! Thousands Spent on Upgrades - Gourmet Kit - Solarium - Hrdwd Flrs - 4 Car Garage! Fin Bsm't - 2 Fps - Putting Green - Backs to Woods! Stream - Pond! Absolutely Stunning! \$849,900 Kim Reesor - 905-640-1200



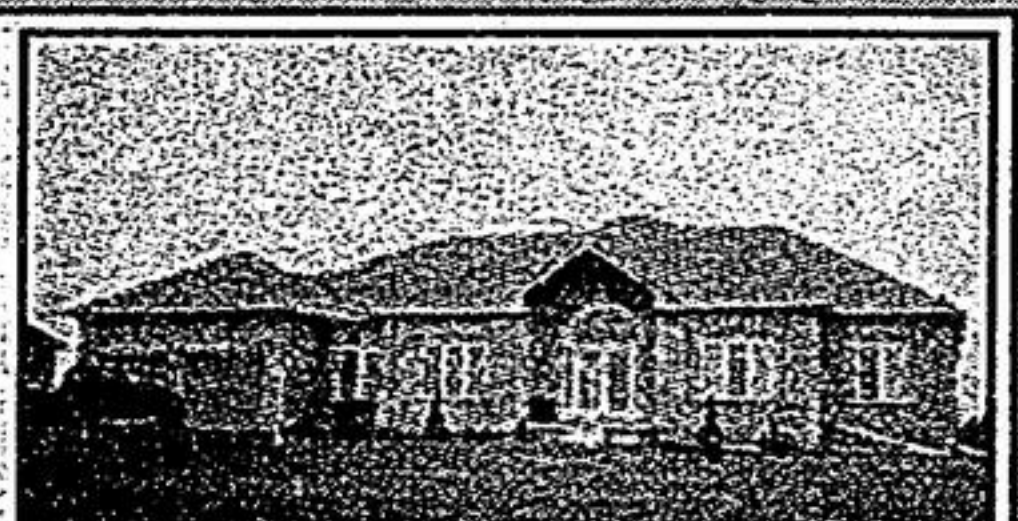
START HERE! \$229,900
Some Finishing to Do - 4 Bedrooms - Large Kitchen - Island - BI Stove and Oven - Immediate Possession Available. Kim Reesor - 905-640-1200



OPEN HOUSE - SUN MAY 15th - 2 - 4PM
87 ALDERWOOD, STOUFFVILLE - Great Family Home - Mn Flr Fam/Fireplace - Mn Flr Laundry - Country Kit - 4 Bdrms - Fin Rec Rm - Hrdwd Flrs - California Shutters! Updated Windows - Spotless! \$377,900 Kim Reesor - 905-640-1200



WHY PAY TO BOARD YOUR HORSE?
Tranquility is yours with this custom bilt 4bd home. Country Kit. stone fp in fam rm, 2 stall barn, 2 grazing paddocks, steps away from York Region! Priced to sell @ \$469,500 Call Joseph R. Gallo - 905-640-1200



LISTED BELOW REPRODUCTION COSTS!
Open concept custom bilt 3bd bung, 9' ceilings, maple flrs, ceramics, circular stairs, walkout bsm't. Value priced \$529,000 Call Joseph R. Gallo - 905-640-1200



JUST LISTED! \$419,000
5 Acres of High and Dry Lane with Gorgeous View in Every Direction! Ideal for a Walkout Basement! Directly North of Markham. Call Joseph or Ross Gallo - 905-640-1200



SPOTLESS BUNGALOW!
3 Bedrooms - Gleaming Hardwood Floors - Updated Cherry Cabinets - Ceramics - Vinyl Windows - C/Air - Premium 70' Lot Overlooking Park! Call Joseph Gallo - 905-640-1200



HOME BUSINESS OR HOBBY?
Live in this Custom Built Bungalow - Approx 5 Yrs Old - With In-Law Apt & Sep Entrance - 2,000 sq.ft. Garage, Heated & Insulated - On Almost 2 Acres - Minutes to Markham. Call Ross/Adele Gallo - 905-640-1200



IN-LAW APARTMENT!
Privacy Plus on 10 Acres - Raised Bungalow - Well Built! 4 Bdrms, Huge Master with Ensuite - Eat-in Kit - Large Liv Rm with Fp and 1 Bdrm In-law Apt - Pool & Hot Tub \$695,000 Call Ross/Adele Gallo - 905-640-1200



IN-LAW APARTMENT
A Rare Find - 146' Deep Lot - Treed - Private and Extensive Gardens - Updated Backsplit - 3 + 1 Bdrms - Open Concept - Huge Family - W/O to Yard! Shows Beautifully! \$354,900 Call Today Adele Gallo - 905-640-1200



GREAT BEGINNINGS
Well maintained brick bungalow in mature area of Stouffville - great for the family. To view contact Lynda Sargeant 905-640-1200.



25 ACRES
Corner property Bethesda & 9th with 778' frontage, just north of Stouffville, new development. Build your dream home or investment. Call Ross Gallo 905-640-1200



PEACE, TRANQUILITY, QUALITY "MAPLE PARK ESTATES" IN BALLANTRAE
Incredible site with all amenities • 1 1/4 acre lots • town water/natural gas • July/2005 possession Walk to regional forest • New home • Top quality construction • We've got it all! Value... Location... Quality. Award winning builder for 4 consecutive years • 12 plans to choose from. Ross Gallo - 905-640-1200



JUST LISTED 15 ACRES
Lovely parcel with 490 ft frontage & some mature trees, located approx 1 mile to new development. Build your dream home & enjoy country living at its best. Call Ross Gallo 905-640-1200

Outstanding Service... Does Not Cost More



List your home with a **Realtor**
who advertises in **Markham/Stouffville**
Real Estate and Sell your Home Fast!