



11 Nurse helps African village through Stouffville project

Opinion6
 Sports10
 New You14
 Classified26

Stouffville Sun-Tribune

SATURDAY, APRIL 9, 2005 ■ SERVING THE COMMUNITY OF WHITCHURCH-STOUFFVILLE ■ 48 PAGES/\$1 INCLUDING GST

FORMER WHITCHURCH-STOUFFVILLE MP CAUTIONS CANADIANS

'Adscam allegations not fact'

BY ROY GREEN
Staff Writer

Canadians should remember scathing testimony by advertising executive Jean Brault about political corruption in Ottawa may not be fact, Richmond Hill MP Bryon Wilfert says.

"Those are allegations an individual has made and it's not appropriate for me to comment on allegations," Mr. Wilfert said of testimony at the Gomery commission.

"Obviously, I'm disgusted by anyone who would do anything illegal and the prime minister has made it very clear that anybody who breaks the public trust, whoever they are, should be charged. Nobody's above the law."

Mr. Wilfert, who once represented Whitchurch-Stouffville, said Liberals supported lifting a ban on Mr. Brault's testimony because they believe Canadians deserve the truth.

If Mr. Brault's accusations of the abuse of taxpayers money by the Liberal government are true, it may be a case of collusion between individuals at the expense of taxpayers

and the Liberal party. He added. Meanwhile, Conservative MP Peter Van Loan said outrage over allegations of government corruption won't result in a quick election call. At least not yet.

"The issue isn't when an election will be; we've already had one election that came too

See TESTIMONY, page 12.



Growth challenges smaller classroom

Where we were, Part 2 of a series

BY CHRIS TRABER
Staff Writer

From the first settler children learning by the glow of a late 1700s hearth to today's students absorbing information awash in the blue hue of a computer screen, public education in York Region has both been the victim and beneficiary of rapid change.

Since the construction in 1802 of S. S. # 1 East Gwillimbury, the first known public education building in York at a time when schooling was voluntary and informal, through to 1871 when the School Act made it mandatory for children aged seven to 12 to attend school 100 days a year, the face and pace of education has accelerated exponentially.

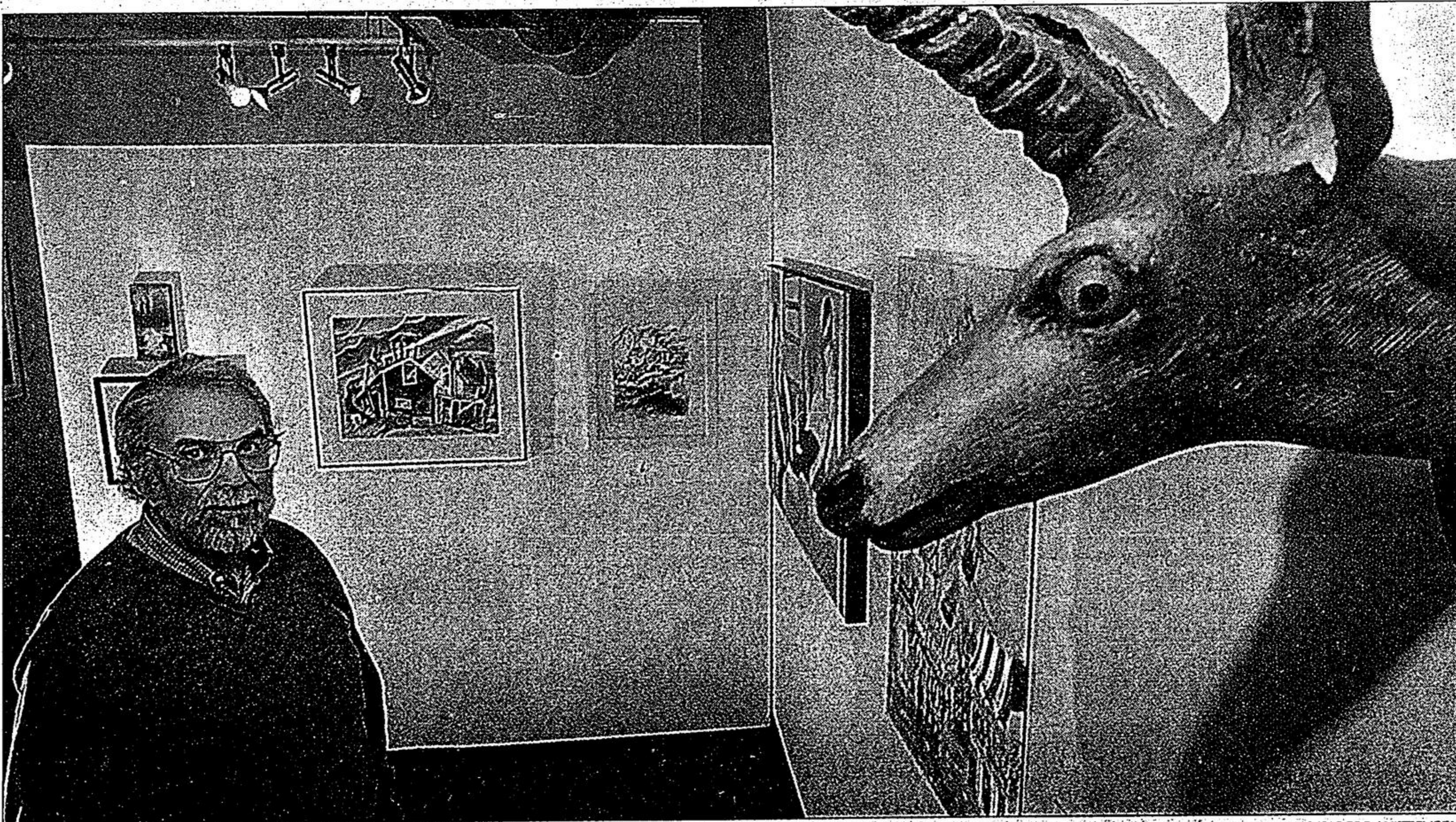
CLOSE-KNIT GROUP

Marion Wells was in the school system as a student and teacher.

She attended Summitview Public School in Stouffville from 1941-52.

"Some of the students who started together in Grade 1 went through together to Grade 13,"

See MANDATED page 3.



STAFF PHOTO/SJOERD WITTEVEEN

WILD SHOW

Ray McNeice of Stouffville poses with his piece, called Airport Expropriation, (on rear wall) and pieces by other artists in the annual juried exhibition at the Latham Art Gallery. The show runs until May 14 at the downtown Stouffville gallery.

Seaway Pools & Hot Tubs
27 HERITAGE RD., MARKHAM
294-8030
beachcomber

AJAC AWARD WINNING VEHICLES FROM AN AWARD WINNING DEALERSHIP!

2005 - MAZDA 6 SPORT - Voted Best "New Family Car" For 2005
MAZDA 6 SPORT WAGON - Voted "Best New Wagon" For 2005

2004 - MAZDA 3 - Voted Best "New Fuel Efficiency" For 2004
MAZDA 6 - Voted Best "New Family Car" For 2004
MAZDA 3 SPORT - Voted Best "Sports Performance" For 2004
MAZDA RX8 - Voted Best "New Sports Car" For 2004
MAZDA 3 - Voted Best "Car Of The Year" For 2004

MARKHAM MAZDA 5396 HIGHWAY #7 MARKHAM 905-294-1210

www.markhammazda.ca

Sutton GROUP

Town and Country Realty Ltd.
640-0888