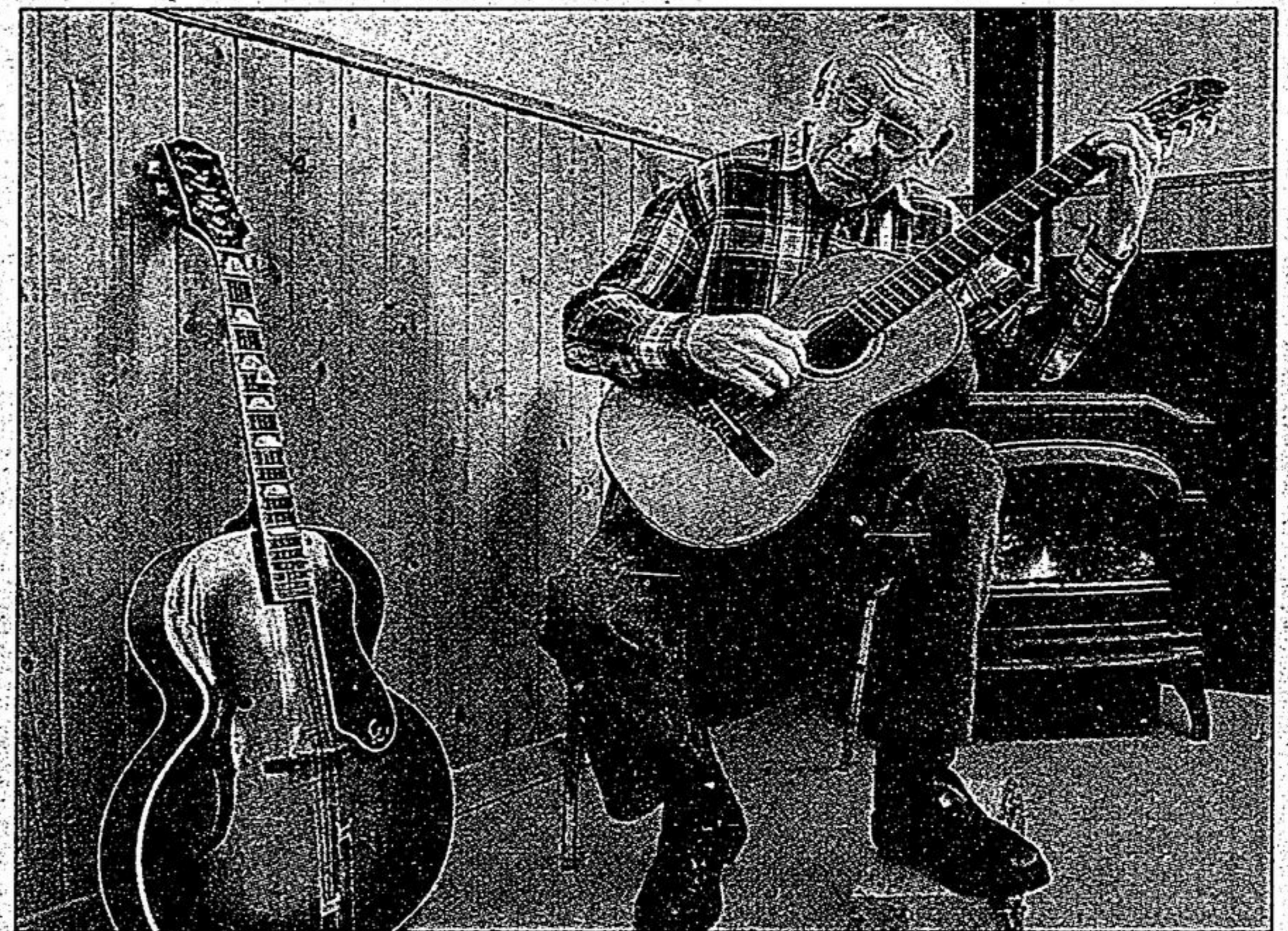


# Sap's on tap, so is fun

*Annual Bruce's Mill maple syrup festival brings conservation area to life*



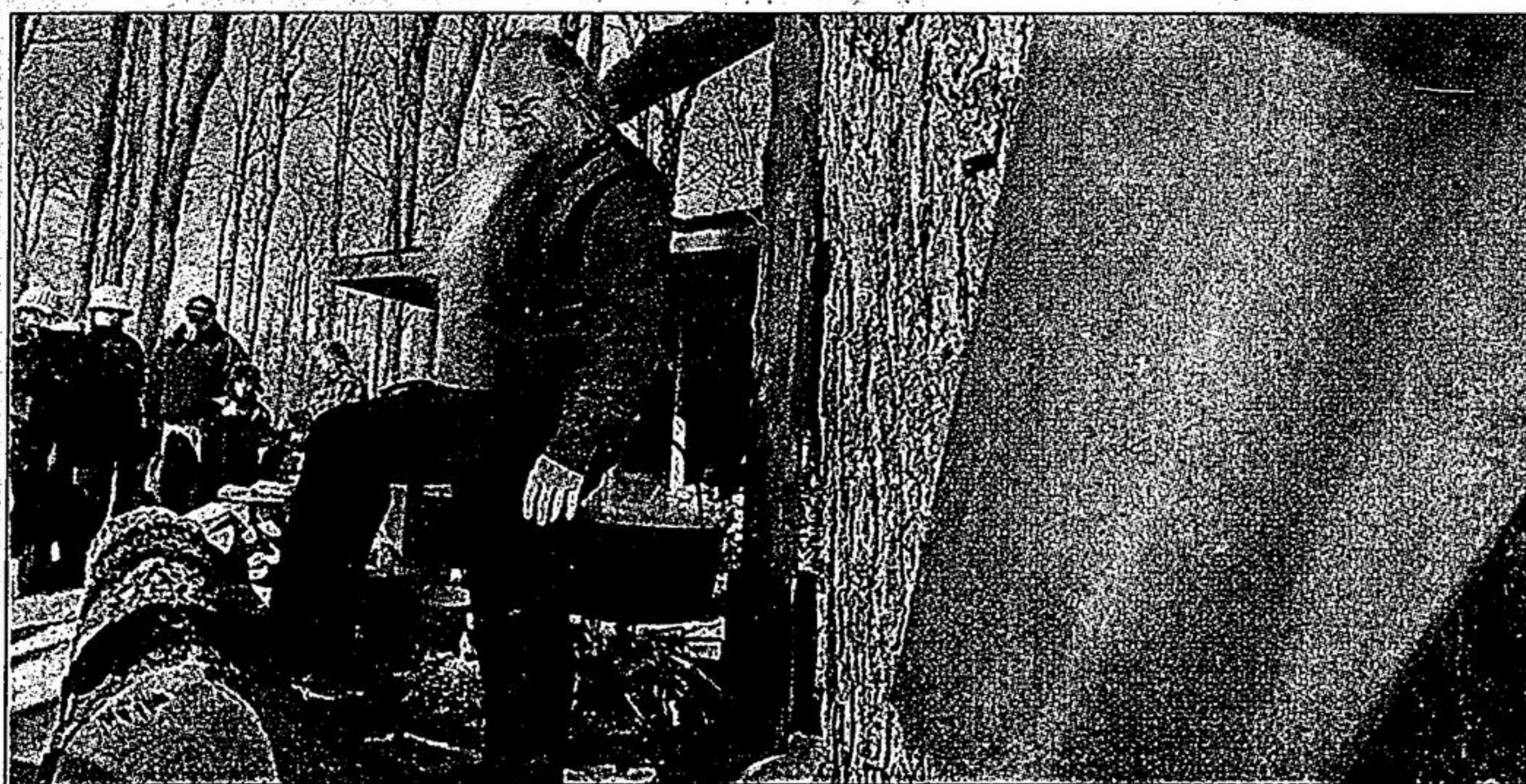
Max Hayward provided entertainment during pancake meals.

Karen Cavanagh and son Jake, 10, mix it up in the snow during the annual Enbridge Sugarbush Maple Syrup Festival at Bruce's Mill Conservation Area. The event features demonstrations, wagon rides, activities and, of course, pancakes and maple syrup. Admission is \$7 for adults and \$5 for students and seniors.



Horse-drawn sleigh rides from A&A Farm Yard Friends are among the attractions at the festival, which runs until April 3.

Photography by Bill Roberts



Dennis Johnson gives visitors information on early 19th century syrup-making techniques.

**TORONTO STREET**  
**DENTAL**  
C·E·N·T·R·E  
905-852-7382

**STOUFFVILLE**  
**DENTAL**  
C·E·N·T·R·E  
905-642-5777

**SUNDERLAND**  
**DENTAL**  
C·E·N·T·R·E  
705-357-3161

**Our Dental Centres would be happy to assist you with all of your dental needs providing phased treatments that are under your control!**



New patients welcome.

The Dental Centre covers all aspects of dentistry. 