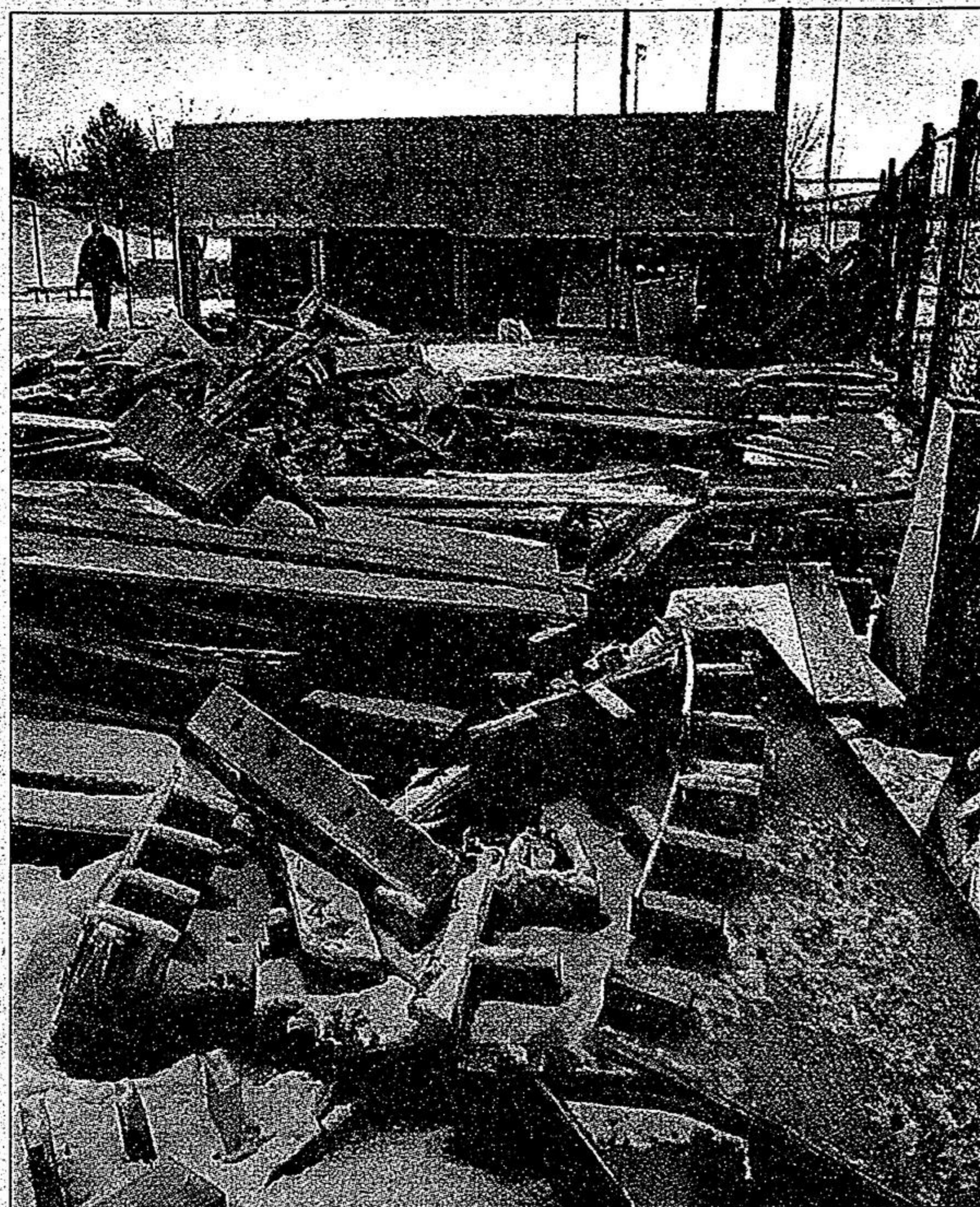


# Over the Edge down in a heap



STAFF PHOTO/SJOERD WITTEVEEN

A crew works to dismantle the Over the Edge skateboard park in Memorial Park in Stouffville last week. The town plans to replace the park with more portable equipment for skateboarders and trick riders.

# NEW YEAR sale-a-bration

## Great Deals On Remaining '04 Models

**'04 NISSAN XTERRA SE**  
CASH PURCHASE **\$30,795\***  
OR LEASE FOR **\$369\*\***

Auto, air, 4x4, power group & more.



Navigation, Auto, V8, 7 passenger, plus DVD

**'04 NISSAN ARMADA LE**  
CASH PURCHASE **\$54,895\***  
OR LEASE FOR **\$599\*\***

**'04 NISSAN MAXIMA SE**  
CASH PURCHASE **\$35,295\***  
OR LEASE FOR **\$399\*\***

Auto, sunroof, leather, loaded



AWD, leather, sunroof, loaded & much more

**'04 NISSAN MURANO SE**  
CASH PURCHASE **\$42,495\***  
OR LEASE FOR **\$449\*\***

**'04 NISSAN 350Z**  
CASH PURCHASE **\$41,995\***  
OR LEASE FOR **\$488\*\***

Performance model, 6 spd, DEMO, 287-hp, loaded



DVD pkg., leather, plus much more

**'04 NISSAN QUEST SL**  
CASH PURCHASE **\$36,195\***  
OR LEASE FOR **\$399\*\***

\*\*48 mth. lease, 96,000 km allowance, 10¢ km excess charge, OAC. \*Plus air tax, gas tax, admin., frt (Murano \$981, Maxima \$972, Quest \$995, Armada \$1,095, Xterra \$961) Cash or equivalent trade required on leases (Murano \$4,500, Maxima \$2,950, Quest \$3,550, Armada \$11,850, Xterra \$2,950, 350Z \$8,900) Plus taxes. In stock units only. While supplies last. Ends January 31, 2005.

# OASIS FITNESS

## Only \$9.99 For LIFE\*

\*As long as you're a member

**EXP. Sat., Jan. 15/05**

### SUPER ALL INCLUSIVE!

**FREE Aerobics**  
**FREE Baby Sitting**

**MARKHAM'S NEWEST FITNESS CENTRE**  
**over 20,000 SQ. FT.**

If You Have Time Left at Another Health Club we honour it at Oasis

**905-209-0763** (Beside LCBO)  
**190 BULLOCK DR**

[www.oasisfitness.ca](http://www.oasisfitness.ca)

# VILLAGE NISSAN

**4600 Hwy. 7, Markham**  
**(905) 477-3337**  
[www.villagenissan.com](http://www.villagenissan.com)