

One of Canada's Top Producers
SYLVIA MORRIS Sales Representative
 "Simply the Best" 905-477-7785



Sue Barbour
Buyer Specialist

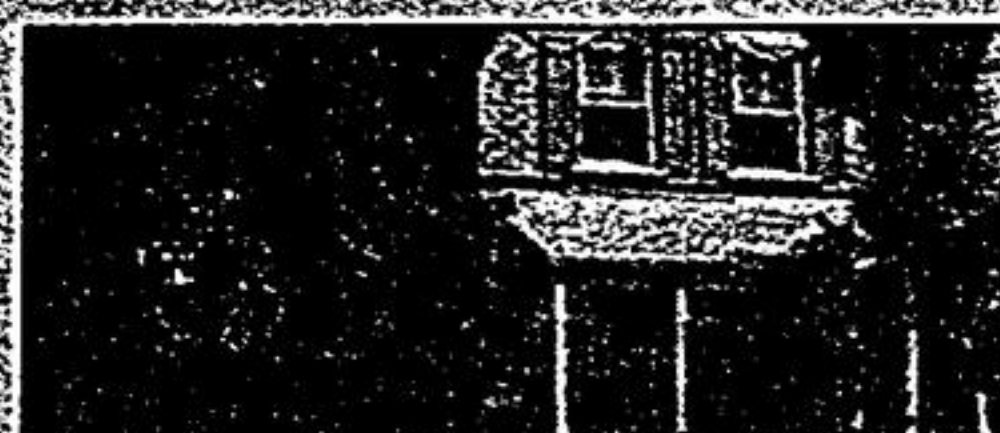
Judy Tessier
Mortgage Specialist



FOR THE RICH & FAMOUS - STOUFFVILLE
 Prestigious Lincolnville Country Estates. Registered subdivision. Cul-De-Sac. Permits avail. To build your dream home. Gas Heat. Some lots beautifully treed. Some lots would suit lower level walk-out. \$239,000 - \$279,000



LOADED WITH EXTRAS
 Approx 4yrs new, approx 2,770 sq.ft., double storey foyer, \$50,000 spent on upgrades, oak floors, upgraded kit, great room with gas fireplace, 4 baths, fantastic location, loaded! \$499,999



BACKS Ravine - UNIONVILLE
 Unionville. Approx 2285 sq.ft. of luxury living. Walk to historic Main St. Backs onto ravine & overlooks valley. Double storey. Great room overlooking kitchen with cathedral ceiling, 9 ceilings on 1st flr. Loaded. \$\$\$ spent on extras. Hardwood flrs thru-out. Amazing back garden \$459,000



HOT OFF THE PRESS
 Fabulous Monarch Home. Approx 3400 sq.ft. of luxury. 5 bdrms, 5 Baths, Great Room Overlooks Kitchen, Gas Fp, Granite Kitchen with Bk's - Hardwood Floors, Prof. Fin Lower Level, Inground Pool, Walk to Historic Main St. Unionville. Library & Art Gallery \$746,000



LOADED WITH EXTRAS
 Home built in 2002, approx 2470 sq. ft., upgrades galore, oak flrs, upgraded kit, gas fp, fam. rm with 10' ceilings on main flr, Kennedy & 16th area, 4 bdrms, 3 baths, prof. landscaped, walk to all amenities. New price \$413,800



ATTENTION BUILDERS, DOCTORS, CHIROPRACTORS: 1 ACRE WARDEN AVE.
 Approx 1 acre, Warden Ave (beside Warden House) north of Hwy 7, English country gardens front & back, definitely one of a kind. 3 flrs. Backsplit loaded w/ extras, triple car garage, \$\$\$ spent on upgrades, marble, ceramic, oak flrs, completely finished lower level. New Price \$949,900



FABULOUS BUNGALOW
 Ranch bungalow. Not lot size: 106 frontage by 135ft. In the heart of Markham. Walk to conservation. In-law apartment with separate entrance. Hrdwd thru-out. Walk to Main St. Markham, schools, shopping & TTC. New price \$379,900



MUST SELL
 Chivatti built, Raymerville area. 4 bdrms, master with sitting area, huge eat-in kit, open staircase to lower level, large lot, hrdwd & parquet flrs, interlock driveway, lovely family home w/ lots of upgrades. \$409,000



146 TRAILRIDGE LANE (MARKHAM/16TH)
 Lovely semi-detached, 3 bedrooms, fabulous family home, single car garage, door from garage to home, large eat-in kitchen, family room with gas fireplace, 2nd floor very cozy, lots of extras. \$309,000



6 ACRES - BETHESDA ROAD
 Brand new listing. Chivatti built, triple car garage, pond, barn, 4 bdrm, 4 bath. Ideal for in-law, door from garage to lower level, circular drive, 10 mins to Unionville. \$699,000.



13 CRANDLEA - HWY 48 & 14TH AVE.
 Hwy 48/14th Ave. Lovely street, approx. 2400 sq. ft., parquet floors, lovely family home, large eat-in kitchen, walkout to front kitchen, 4 bedrooms, 3 baths, high demand area, access to garage. \$399,900



MONARCH - LOADED WITH EXTRAS
 Monarch, Bridle Walk, 3yrs New, The 'Southmor', Double Storey, Great Rm w/Gas Fp, Overlooking Kit, 9' Ceilings, Fabulous White Kit, Oak Flrs, Sep Liv Rm/Den, Din Rm, Walk to TTC, Schools, Close to 407. \$450,000



JUST LISTED
 Walk to Historic Main St, Unionville, Library & Art Gallery, Approx 3600 sq ft., Monarch, The Henry Summerfield, 3rd Storey Loft. Perfect for Nanny or In-laws, Marley Roof, Scarlet Ohara Staircase, Inground Kidney Pool, 2nd Flr Library, Home Totally Ren'd, \$\$\$ Thousands Spent on Extras. Unbelievable Family Home \$749,000



WALK TO MAIN ST. MARKHAM
 Charming 3-bedroom, Hardwood under broadloom, finished bsmt, huge lot, very desirable street in Markham \$359,900.



ZONED COMMERCIAL
 Century home, walk to Main St. Markham, 3 bdrms, 2 baths, large detached garage, suitable for workshop, perfect for 1st time buyers, fabulous location, walk to all amenities. New price \$259,900



FABULOUS INVESTMENT
 Walk to Main St. Markham, 5 bdrms, note lot size: 73x219, fantastic location, suitable for 2 families or prof. office, doctor, chiro, dentist, etc., one of the nicest streets in town, lots of parking, close to schools, buses and parks. \$579,000



TRIBUTE - ATTENTION 1ST-TIME BUYERS
 Brooklin. Lovely family Tribute home, approx 1740 sq ft, link, 2 storey, main floor family room, gas fireplace, walkout to deck from kitchen, single car garage, freshly painted \$239,900



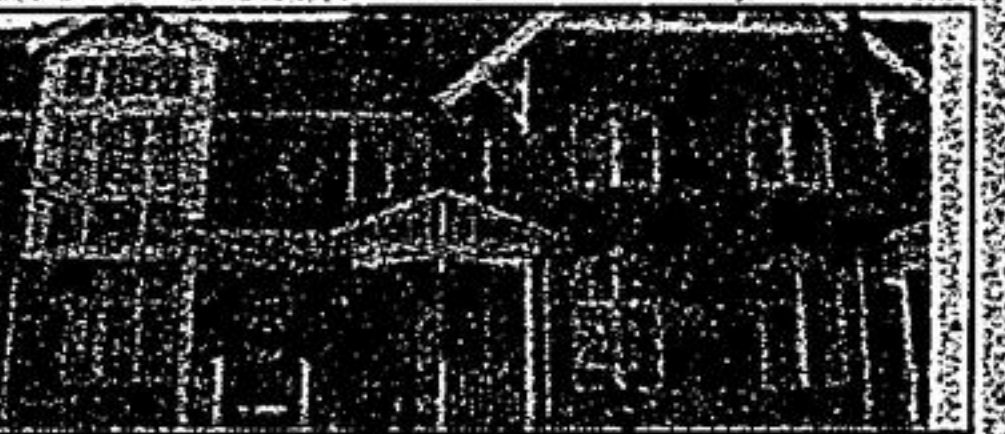
CONSERVATION AREA - GREAT INVESTMENT
 Conservation area, lovely 2 storey home, 4 large bdrms, large lot, main floor family room, fireplace in living room, parquet floors, eat-in kitchen, double car garage, great investment. \$339,000



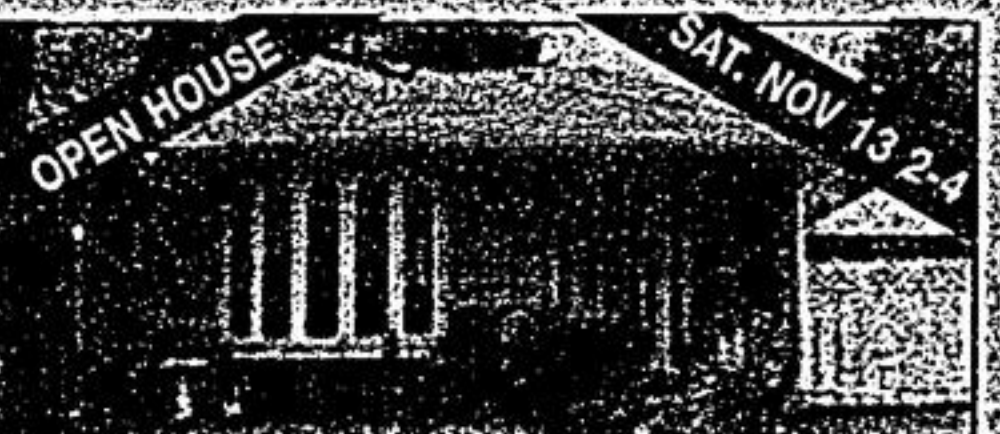
FOR THE RICH & FAMOUS
 One of a kind custom built bungalow, approx 3450sq.ft. of luxury, 1.24 acres, granite thru-out, marble, cathedral front foyer, All built-in appliances, 2 gas fps, 3 car garage. The very highest quality. Ballantrae Rd/Hwy 48/Aurora Rd. \$849,900.



FIRST-TIME BUYERS DREAM
 Lovely semi-detached, loaded with extras, walk-out bsmt, suitable for nanny/in-laws, door to home from garage, close to 407, first time buyers' dream. \$289,900



CORNELL - 3 STOREY
 Lovely 3 storey townhome, originally 5 bdrms, very private master suite 3rd storey, family room overlooking kitchen with walk-out, oak flrs. \$289,000



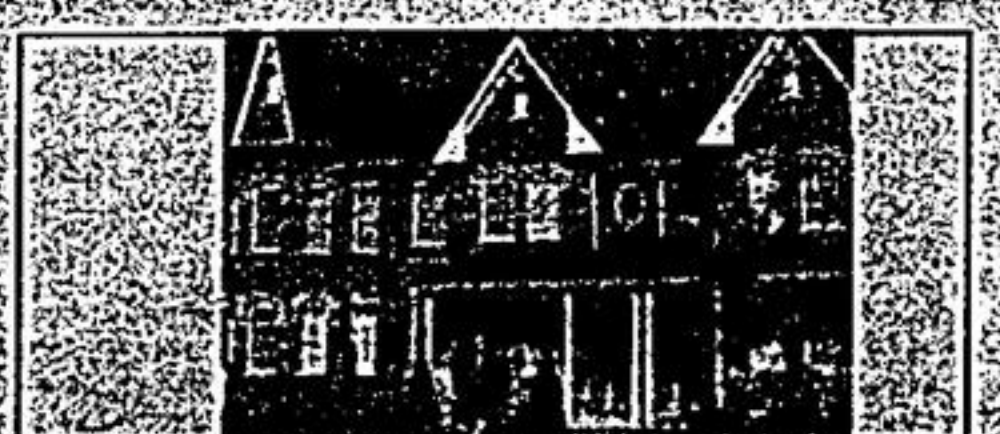
16 ROBINSON ST. (HWY 7/GALSWORTHY)
 Lovely semi-detached 3 level backsplit, 3 bdrms, 2 washrooms, finished bsmt, walk to Hwy 7, schools & buses. \$279,900



HOT OFF THE PRESS
 Remington. Original Owners, Great for 1st Time Buyers, 3 bdrms, prof landscaped, Oak flrs, Eat-in Kit, Prof Fin Lower Level, Steps to 2 Schools & Buses to Subway, easy Access to 407 & 404. Very Beautiful Home. \$299,900



RAYMERVILLE - BEST PRICE IN THE AREA
 Approx 2,240 sq ft. of luxury, note lot size 35' x 182', very large rms, 4 bdrms, 3 baths, main flr family room w/fireplace, double car garage, lots of extras. \$329,900



HOT OFF THE PRESS
 Beautiful, Upscale, Cornell, Gorgeous, Freehold Townhome, Immaculate, Built by Beaver, Brook. Approx 3.5 yrs New, Oak Flrs, 1st Time Buyers' Dream, Walk to Schools, Buses & Shopping, Easy Access to 407 & 404, Loaded with Extras \$289,000



1ST-TIME BUYERS' DREAM
 Country living at it's best, mins east of Stouffville, access to 407 & Go Train, renovated century home, lg workshop, new kit, new bath, hrdwd flrs, w/ lower level, perfect for nanny/in-laws, newer windows, large lot. \$309,000



MONARCH, UNIONVILLE, WALK TO MAIN ST.
 Monarch built, approx 2800 sq. ft., fabulous back garden, kidney pool, hot tub w/spill over waterfall, slate, hrdwd, ceramic, dream kit, walk to Main St. Unionville, \$\$\$ spent on upgrades, huge great room overlooks kit & back garden, prof. landscaped front & back. \$549,900



WHY RENT?
 Stouffville Century Home, Semi-detached, O'Brien Ave. Very quiet area. Beaches character. Restored, renovated & decorated. High ceilings, Pine kitchen, Stain glass, Incredible trim, Claw foot tub. Spacious home. 20amp service. Huge deck \$269,000.



MAIN ST. UNIONVILLE - RENTAL
 Century home on Victoria St., fabulous home, amazing property, avail immediately, lots of character, very desirable area, very large home. \$3,500 per month

190 MAIN ST., Suite 201, UNIONVILLE



DENNIS IRWIN
 Associate Broker
 905 640-3131
 dirwin@trebnet.com
RE/MAX
 All-Stars Realty Inc.



ELEGANT 1 1/2 STOREY - NEW PRICE \$389,000
 Located in prestige Canterbury Commons (Port Perry). You can use this home as a bungalow or two storey. Features 2 main flr bdrms, 2 bath, huge liv rm w/fireplace, din rm, eat-in kit, upper level loft/bdrm/fam rm, large deck, south exposure overlooking golf course. This is your chance to move in & enjoy this modern Life Style Community. Call now. E-mail: dirwin@trebnet.com Website: www.dennisirwin.ca



PENNY ANDERSON
 Sales Representative
 905-471-2121
 "Your Satisfaction Is My Reputation"

 Leading Edge Realty Inc.

OPEN HOUSE SUN NOV 14TH 2-4PM - 45 QUEEN'S PLATE ANGUS GLEN



- Immaculate 3 bdrm, 3 bath freehold townhome
- 9ft main floor ceilings
- Family room with gas fireplace
- Front porch and secluded rear yard

For more info on this home, Call Penny Anderson 905-471-2121

