

FLYERS

Inserts for Thursday Oct. 14, 2004

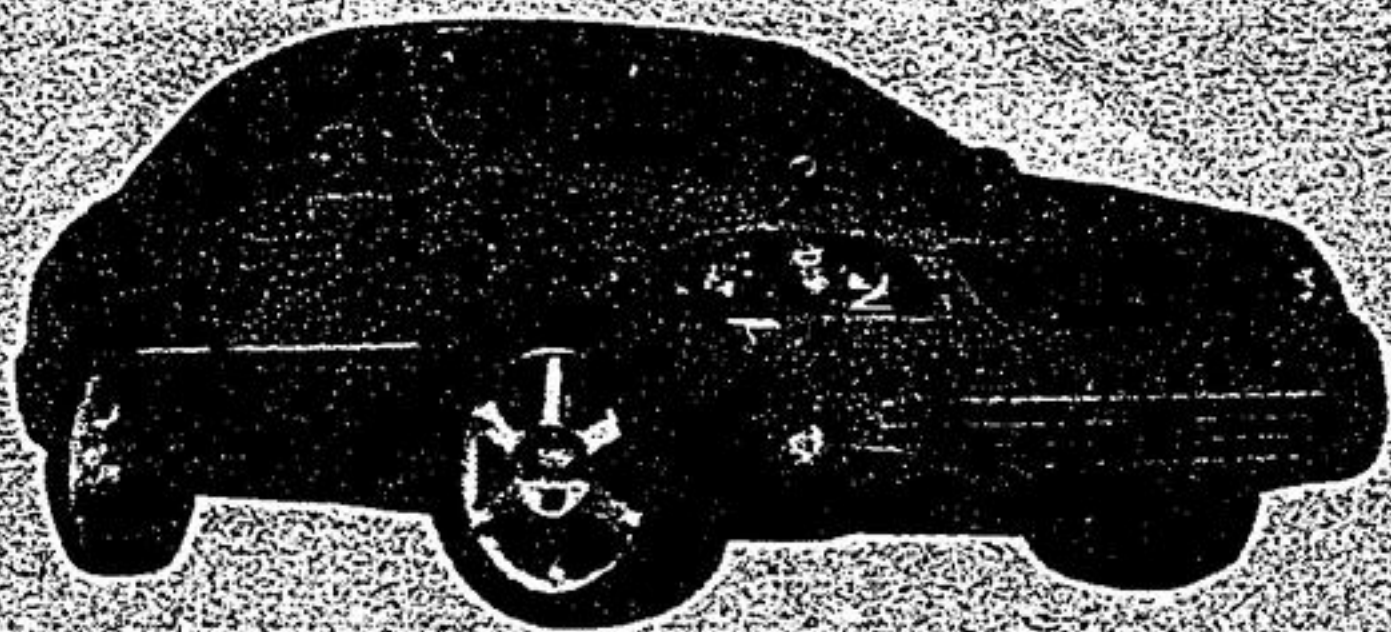
No one delivers results like we do!
To find out more about how to reach your target market and get the same great response from your flyer distributions as these customers, call us today!
*Selected areas only

- | | | | |
|---------------------|---------------------|-------------------|---------------------|
| Canadian Tire* | Michaels* | IGA* | Zellers* |
| Henry's Cameras* | Toys R Us* | Today's Homes* | Office Depot* |
| A&P* | Mattress Haven* | Dominion* | Dell Computers* |
| The Bay* | Sears* | Food Basics* | Zehrs* |
| Regency Fireplaces* | Shoppers Drug Mart* | Sobey's* | The Bombay Company* |
| Home Depot* | Ethan Allen* | No Frills* | Radio Shack* |
| Loblaws* | Rivaal Hair Salon* | Hy & Zels* | Home Hardware* |
| I Concept* | Living Lighting* | Future Shop* | Walmart* |
| Bad Boy* | Price Chopper* | Chemist Pharmacy* | Longo's* |
| M&M Meats* | Factory Direct* | Best Buy* | |
| Color Your World* | Furniture* | MDG Computers* | |

Stouffville Sun-Tribune (905) 294-8244

VILLAGE NISSAN'S

INVENTORY SAVE THOUSANDS SALE



2004 Sentra Spec V

- 175 HP • 6 SPD • Sunroof
- ABS • Side Air Bags
- Spoiler • 300 Watt Stereo

Purchase Financing From

\$22,953* 1.8%**

\$3,000 CASHBACK

2004 Maxima SE

- 265 HP • 18" Alloy Wheels • ABS
- 320 Watt Stereo • Skyview Roof
- Leather Int. • Power Group
- Side Air Bags • Xenon Lights

Purchase Financing From **2.8%****



\$5,000 CASHBACK

2004 Pathfinder LE

- Leather interior • Sunroof • 240 HP
- 6 cyl • Air • Auto • Power Group
- 6 Disc Changer • Alloy Wheels
- ABS brakes

\$7,500 CASHBACK

2004 Pathfinder Armada

- Leather interior • Sunroof • Air • Auto
- Power Group • 6 Disc Changer
- DVD System • Navigation System
- 305 HP • V8 • 9100 lb Towing Capacity • ABS



\$3,000 CASHBACK

2004 Murano SE

- AWD • Leather • Sunroof • Power Group • Air • Auto • 6 Disc Changer
- 250 HP • 6 cyl • Alloy Wheels • ABS

*Plus freight, PDE, admin & all taxes. **Financing based on 36 mths.

VILLAGE NISSAN

4600 Hwy. 7
Markham
(905) 477-3337
www.villagenissan.com



SHIFT

*In stock units only. Cash purchases only. Factory incentives included in cash back offer. Cannot be combined with any other offer. See Dealer for Details.

DISCOVER THE BEAUTY OF THE YORK REGIONAL FOREST at the

YORK REGION FALL FOREST FESTIVAL

Saturday October 16, 2004, 10:00 a.m. to 2:00 p.m.

YORK REGIONAL FOREST ELDRED KING WOODLANDS

16232 Hwy. #48, approximately 2 km north of Regional Road 15 (Aurora Road)

- Enjoy a horse drawn wagon ride while learning about sustainable forest management
- Get the dirt on Forest Soils
- Hear about why the Forest turns orange, yellow and red in the fall
- Take a hike with a member of Ontario Nature
- Come out young nature lovers to learn about exciting forest careers in partnership with the Ontario Forestry Association

We hope to see YOU soon in YOUR Regional Forest.

For more information contact:
the Regional Greening Co-ordinator at (905) 895-1200 ext. 5274.



Green: It's in our nature.



Active Green + Ross' COMPLETE TIRE & AUTO CENTRE

The Tire Experts



HARMONY™, AGILITY

- 130,000 km treadwear warranty
- 6 yr. Road Hazard Protection
- S-Speed Rated

SIZE	REG PRICE	WITH REBATE
P175/70R13	\$91.80	\$79.30
P205/75R14	\$121.50	\$109.00
P175/70R14	\$107.10	\$94.60
P195/70R14	\$117.90	\$105.40
P175/65R14	\$108.00	\$95.50
P185/65R14	\$113.40	\$100.90
P205/70R15	\$130.50	\$118.00
P215/70R15	\$141.30	\$128.80
P195/65R15	\$126.90	\$114.40
P205/65R15	\$134.10	\$121.00
P185/60R15	\$123.30	\$110.80
P215/65R16	\$144.00	\$131.50
205/60R16	\$140.40	\$127.90
P215/60R16	\$147.60	\$135.10
P205/55R16	\$140.40	\$127.90

More sizes available. Call for your size.

\$50 INSTANT REBATE

Ends this Saturday
HydroEdge
ULTRA PREMIUM ALL-SEASON TIRE

- Maximum hydroplaning resistance
- Optimal traction in wet and snow
- 140,000 km treadwear limited warranty
- Innovation: cutting-edge tread design
- T-speed rated

SIZE	REG PRICE	WITH REBATE
P185/70R14	\$121.50	\$109.00
P185/65R14	\$122.40	\$109.90
P195/65R15	\$137.70	\$125.20
P195/60R15	\$137.70	\$125.20
P215/60R15	\$153.90	\$141.40
P205/65R15	\$144.90	\$132.40
P215/70R15	\$152.10	\$139.60
P205/55R16	\$151.20	\$138.70
P215/55R16	\$158.40	\$145.90
215/65R16	\$154.80	\$142.30
P225/60R16	\$162.90	\$150.40
P255/55R17	\$182.70	\$170.22

More sizes available. Call for your size.

Receive a **\$50** Gasoline Card* with the purchase of 4 Michelin® winter tires* from October 18 to November 13, 2004.

DieHard FROM \$59.95*

DIEHARD 60
• Up to 455 cold Cranking Amps
• 60 Month Total Warranty
• 3 Month Free Replacement Warranty

DIEHARD GOLD BATTERY
• Up to 1000 cold Cranking Amps
• 100 Month Total Warranty
• 3 Year Free Replacement Warranty

\$84.99*

A \$5 RECYCLING DEPOSIT CHARGE WILL BE APPLIED WHEN YOU BUY A NEW BATTERY, REFUNDABLE WITH THE RETURN OF YOUR OLD BATTERY FOR RECYCLING.

*GET A \$50 INSTANT REBATE (\$12.50 PER TIRE) WHEN YOU BUY 4 MICHELIN HYDROEDGE, HARMONY, AGILITY, CROSS TERRAIN SUV OR XC LT4 TIRES DURING OUR 2-WEEK SALE OCTOBER 15 TO OCTOBER 16TH 2004. TIRE OFFER CANNOT BE COMBINED WITH ANY OTHER OFFER/COUPON PROMOTION. MICHELIN WINTER TIRE \$50 GAS CARD PROMOTION STARTS MONDAY OCT 18, 2004.

The TIRE EXPERTS Offer You:
• Selection of Name Brand Tires
• Expert Advice
• Professional Service & Installations

30 DAY PRICE PROTECTION SATISFACTION GUARANTEE!

FREE 24 HR Roadside Assistance (Anywhere in North America)
FREE Lifetime Tire Rotations
FREE Brake, Shock, & Exhaust Inspection

There's No Better Place To Buy Your Tires & Service Your Vehicle

2 Markham Locations To Serve You Better

5803 Hwy #7 (West of Markham Rd) 905-472-6868

Formerly Sears Auto Care
2900 Steeles Ave (Shops on Steeles Mall) 905-882-6194

www.activegreenross.com