

DENTURES

- Complete and partial dentures
- Dentures over dental implants
- Repairs & relines of existing dentures
- New patients welcome
- No charge for consultations

ED EDWARDS D.D.

Denturist

6212 Main Street (just east of the train station)

Stouffville

(905) 642-7474



email contact@stouffvilledentist.ca

COMMUNITY CALENDAR

Community non-profit groups in Whitchurch-Stouffville are welcome to place their coming events in this column at no charge. Please send your notice to Community Calendar at the Stouffville Sun-Tribune, Box 154, Stouffville, L4A 7Z5 (fax number 905-640-8778), or drop it off at the office, 34 Civic Ave., 3rd Floor. Deadline is Mondays at 6 p.m. Publication cannot be guaranteed but we will make every effort to ensure it is included. Please be brief.

SPECIAL EVENTS

TONIGHT

Parents to SDSS: Stouffville District Secondary School is holding a take your parents to school night. Grade 9s can bring their parents at 7 p.m.; students in grades 10 to 12, come at 7:30 p.m. Parents have a chance to talk to teachers and follow the students' timetables.

James Bessey art: The Latham Gallery, 6240 Main St. in Stouffville, presents an exhibition of recent watercolour works by veteran Stouffville artist James Bessey. The exhibition is open 10 a.m. to 5 p.m. every day until Saturday. The opening reception is Thursday at 7:30 p.m. Call 905-640-8954 for more information.

Stouffville art: Artist Tony Volpe shows an eclectic exhibition of art in

oil, acrylics, pastels and charcoal on paper at the Kathleen Gormley McKay Art Centre, 197 Main St. in Unionville, until Sunday. Hours are 10 a.m. to 5 p.m. each day Sunday from noon to 5 p.m. Call 905-477-9511 for information.

SATURDAY

Fire prevention: An open house at Stouffville fire station 51 at 6392 Main Street kicks off Fire Prevention Week. There will be Sparky the fire dog, interactive activities and educational information. The volunteer firefighters association will be cooking and serving free hot dogs.

Markham/48 art tour: Several Whitchurch-Stouffville artists will show their art at Ballantrae art studios in the Markham/48 studio tour which features the works of 20 artists from Markham and Whitchurch-Stouffville. The tour is

on from 10 a.m. to 5 p.m. until tomorrow. Tour brochures are available at the Lebovic Leisure Centre in Stouffville, as well as shops and businesses in Ballantrae. For more information, call 905-946-4472.

MONDAY, OCTOBER 4

Toastmasters in town: Stouffville Toastmasters offers training in communication, leadership and personal development every Monday night at 7 p.m. Call 905-472-5367 for more details.

SATURDAY, OCTOBER 9

Palettes of Whitchurch: An exhibition of oils, watercolours and acrylics by The Palettes of Whitchurch artists runs from 10 a.m. to 5 p.m. Also on Sunday and Monday. The show is at the Lemoville Community Centre, 13453 McCowan Rd. (south of Bloomington Road). Free admission and free parking. Call 905-640-3965.

OPENING SPECIAL

medispaclinic

ON MAIN

SPECIALIZING IN LASER TATTOO REMOVAL

"My tattoo was cool at 18... but inappropriate at 30."

\$75.00 OFF FIRST TREATMENT

(not valid with any other offer)

6038 Main Street, Stouffville, Ontario L4A 1B8

905.640.0092 f. 905.640.0620 www.medispaclinic.com

Active Green + Ross

COMPLETE TIRE & AUTO CENTRE

The Tire Experts



HARMONY™ AGILITY

- 130,000 km treadwear warranty
- 6 yr. Road Hazard Protection
- S-Speed Rated

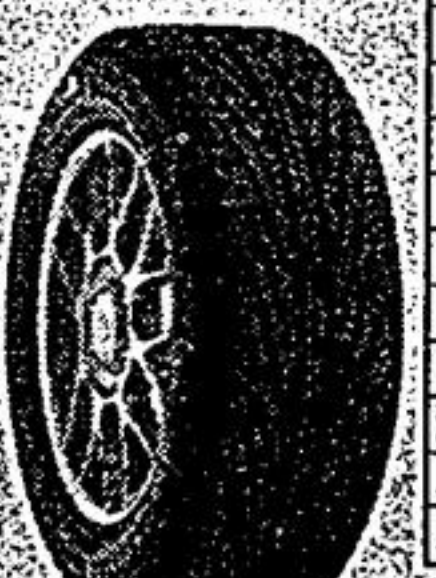
SIZE	REG PRICE	WITH REBATE
P175/70R13	\$91.80	\$79.30
P205/75R14	\$121.50	\$109.00
P175/70R14	\$107.10	\$94.60
P195/70R14	\$117.90	\$105.40
P175/65R14	\$108.00	\$95.50
P185/65R14	\$113.40	\$100.90
P205/70R15	\$130.50	\$118.00
P215/70R15	\$141.30	\$128.80
P195/65R15	\$126.90	\$114.40
P205/65R15	\$134.10	\$121.00
P185/60R15	\$123.30	\$110.80
P215/65R16	\$144.00	\$131.50
P205/60R16	\$140.40	\$127.90
P215/60R16	\$147.60	\$135.10
P205/55R16	\$140.40	\$127.90



\$50 INSTANT REBATE

HydroEdge™
ULTRA PREMIUM ALL-SEASON TIRE

- Maximum hydroplaning resistance
- Optimal traction in wet and snow
- 140,000 km treadwear limited warranty
- Innovation, cutting-edge tread design
- T-speed rated



SIZE	REG PRICE	WITH REBATE
P185/70R14	\$121.50	\$109.00
P185/65R14	\$122.40	\$109.90
P195/65R15	\$137.70	\$125.20
P195/60R15	\$137.70	\$125.20
P215/60R15	\$153.90	\$141.40
P205/65R15	\$144.90	\$132.40
P215/70R15	\$152.10	\$139.60
P205/55R16	\$151.20	\$138.70
P215/55R16	\$158.40	\$145.90
P215/65R16	\$154.80	\$142.30
P225/60R16	\$162.90	\$150.40
P255/55R17	\$182.70	\$170.22

CROSS TERRAIN SUV XC LT4

- 100,000 km treadwear warranty
- 6 yr. Road Hazard Protection

SIZE	REG PRICE	WITH REBATE
P215/75R15	\$153.00	\$140.50
P235/75R15	\$165.60	\$153.10
P235/70R15	\$170.10	\$157.60
P265/70R15	\$188.10	\$175.60
P245/75R16	\$210.60	\$198.10
P225/70R16	\$193.50	\$181.00
P245/70R16	\$205.20	\$192.70
P255/70R16	\$211.50	\$199.00
P265/70R16	\$219.60	\$207.10
P235/65R17	\$204.30	\$191.80

More sizes available. Call for your size.

DieHard

FROM \$59.95*



- DIEHARD 60**
 - Up to 455 cold Cranking Amps
 - 60 Month Total Warranty
 - 3 Month Free Replacement Warranty
- DIEHARD GOLD BATTERY**
 - Up to 1000 cold Cranking Amps
 - 100 Month Total Warranty
 - 3 Year Free Replacement Warranty

\$84.99* EACH

GET A \$50 INSTANT REBATE (\$12.50 PER TIRE) WHEN YOU BUY 4 MICHELIN HYDROEDGE, HARMONY, AGILITY, CROSS TERRAIN SUV OR XC LT4 TIRES DURING OUR 2-WEEK SALE OCTOBER 1ST TO OCTOBER 16TH 2004. TIRE OFFER CANNOT BE COMBINED WITH ANY OTHER OFFER/COUPON PROMOTION.

The TIRE EXPERTS Offer You:

- Selection of Name Brand Tires
- Expert Advice
- Professional Service & Installations

30 DAY PRICE PROTECTION GUARANTEE!

- FREE 24 HR Roadside Assistance (Anywhere in North America)
- FREE Lifetime Tire Rotations
- FREE Brake, Shock, & Exhaust Inspection

There's No Better Place To Buy Your Tires & Service Your Vehicle

2 Markham Locations To Serve You Better

5803 Hwy #7 (West of Markham Rd) 905-472-6868

Formerly Sears Auto Care 2900 Steeles Ave (Shops on Steeles Mall) 905-882-6194

www.activegreenross.com

OIL CHANGE • CERTIFICATIONS • SHOCK STRUTS • COOLING SYSTEM • AIR CONDITIONING • BRAKES • TUNE-UP • EXHAUST • BATTERIES • ALIGNMENTS • EMISSION TESTS

FIGHT OVER 100 DISEASES WITH ONE DONATION

These are just a few of the over 100 liver-related illnesses that threaten the lives of more than 2 million Canadian men, women and children. For 25 years now, the Canadian Liver Foundation has been leading the fight against liver disease and to continue, we need your help. One simple act of kindness can go so very far. 1320 Yonge Street, Suite 901, Toronto, Ontario M4T 1X2 1-800-563-5483 This message brought to you as a courtesy service of The Economist & Sun-Tribune

Now There's More...



Bonnie Stern is back with more HeartSmart recipes. They're nutritious and delicious!

Available at your local Heart and Stroke Foundation Office.



This message brought to you as a community service of The Economist & Sun-Tribune

Rouge Valley Retirement Residence

OUR SERVICES INCLUDE **INDEPENDENCE**

As independent as you choose. We're here to provide the service and support you desire.

PRESENTATION CENTRE NOW OPEN
Monday-Thursday 9am-7pm
Friday 9am-1pm
Saturday-Sunday 12pm-4pm

Call 905-294-1114

Rouge Valley Retirement Residence
5958 16th Avenue, Markham ON

CHARTWELL SENIORS HOUSING REIT
www.chartwellreit.ca

