

**DON'T LET YOUR DREAMS GO UP IN SMOKE.**

Quitting saves more than your life. Calculate how at cancer.ca  
**smokers' HELPLINE**  
 CANADIAN CANCER SOCIETY  
**1 877 513-5333**

This message brought to you as a community service of The Economist & Sun/Sun-Tribune

*"Sophisticated, solid and seriously stylish!"*  
 - Toronto Star



MSRP \$15,995\*\*



CLASS LEADING SAFETY  
**6 Airbags**

EX model shown

The **ONLY** compact with 6 standard airbags.

**ALL NEW 2005 SPECTRA LX CLASS LEADING SAFETY**

- 2.0 L DOHC engine • 5-speed manual
- AM/FM/CD stereo • 6 speakers • 60/40 split-folding rear seat • 15" wheels • Anti-theft immobilizer • Independent front & rear suspension

**\$179** \* DELIVERY AND DESTINATION INCLUDED PER MO. 60 MOS.  
 LEASE FROM  
**\$0 SECURITY DEPOSIT**  
 OR  
**0% PURCHASE FINANCING**

**DRIVE MORE**

More features. More fun. What more do you need?

EX-L model shown MSRP \$25,595\*\*

HIGHEST SAFETY RATING POSSIBLE

EX-V6 model shown MSRP \$22,250\*\*

MSRP \$19,995\*\* SPECTRA5 model shown

**2005 Spectra5 ARRIVING NOW!**

**2004 SEDONA LX**  
 World Class Safety

- 3.5 L V6 DOHC engine • 5-speed automatic
- Front & rear A/C • Cruise control • Power windows, locks & heated mirrors • Remote keyless entry • AM/FM/CD stereo • Rear privacy glass • Dual airbags • Wiper de-icer • Dual sliding doors • Tilt steering • 7-passenger seating • 10 cup holders • And more

**\$199** PER MO. 60 MOS.  
 LEASE FROM  
**\$0 SECURITY DEPOSIT**  
 OR **\$21,595**  
 PURCHASE FINANCING OR CASH PURCHASE

**2004 MAGENTIS LX**  
 Affordable Elegance

- 2.4 L DOHC engine • 4-speed Steptronic transmission • Dual airbags with Passenger Presence Detector • A/C • Power windows, locks & heated mirrors • Remote keyless entry with alarm • AM/FM/CD stereo • Cruise control • Tilt steering • 60/40 split-folding rear seat • Illuminated vanity mirrors

**\$215** PER MO. 60 MOS.  
 LEASE FROM  
**\$0 SECURITY DEPOSIT**  
 OR **\$19,495**  
 PURCHASE FINANCING FOR 60 MONTHS OR CASH PURCHASE

**SPECTRA5 GIVES YOU MORE!**

- 16" alloy wheels • Air conditioning
- Cruise control • Power windows & door locks • Remote keyless entry with alarm • Leather-wrapped steering wheel & gear shift knob

**\$249** PER MO. 60 MOS.  
 LEASE FROM  
 DELIVERY AND DESTINATION INCLUDED  
**\$0 SECURITY DEPOSIT**  
 OR **0% PURCHASE FINANCING**



**CANADA'S BEST OWNERSHIP COVERAGE**  
 5-YEAR/100,000 KM BUMPER TO BUMPER WARRANTY  
 5-YEAR/100,000 KM POWERTRAIN WARRANTY  
 5-YEAR/100,000 KM EXTRA CARE ROADSIDE ASSISTANCE  
 † FREE OIL AND FILTER CHANGES FOR LIFE



**KIA MOTORS**

**Kia of Markham**

29 Laidlaw Blvd., Markham, ON (905) 201-0083



**FRAME ART GALLERY**

ALL FRAMED MIRRORS  
**50% off**



- Custom Framing
- 16 Years in Markham
- Photo Enlargements

5051 Hwy. 7 East

905-470-6997

ACROSS FROM MARKVILLE SHOPPING CENTRE (Beside Brunswick Pool Tables)

*A Sophisticated Dining Experience*

**TUESDAY SENIORS' SPECIAL**

- Lunch
- Free Salad or Soup with any Entrée
- Dinner
- 10% off any Entrée

**Grand Island Seafood & Steakhouse**

548 Carlton Rd., Unionville  
 905-479-5999

**Heritage Building Available**

Prior to demolition, the owner is inviting proposals for the relocation or salvage of a barn structure and ancillary buildings located at 7866 Kennedy Rd., Markham.

The buildings consist of a medium sized sawn post and beam barn, and related outbuildings including a frame drive shed, milk house and garage.

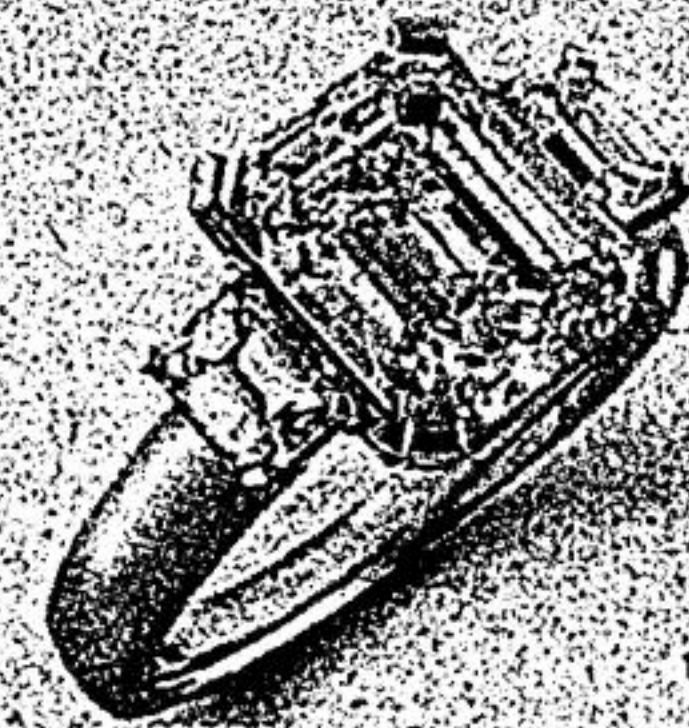
The property will be available for viewing on Wed., Aug. 4, 2004, from 9 to 11 a.m. or by appointment by contacting **Jim Whitehead, (416) 413-1020 ext. 2330**

Proposals received after Aug. 20, 2004 will not be considered.

**PUBLIC AUCTION**

**OVER 100 CONSIGNED ITEMS SEIZED BY CUSTOMS**

UNCLAIMED, ABANDONED JEWELLERY & WATCHES ORDERED SOLD PIECE TO THE HIGHEST BIDDER



1.5 ct diamond rings

1-5 CT DIAMOND RINGS, EMERALDS, RUBIES, PEARLS, SAPPHIRES, EARRINGS, BRACELETS, NECKLACES, MANY ROLEX, CARTIER, PIAGET, PATEK WATCHES, MANY HIGH QUALITY HAND KNOTTED PERSIAN AND ASIAN CARPETS AND RUGS, HAND WOVEN WITH SILK, WOOL, COTTON AND OTHER NATURAL FIBERS.

**SUNDAY JULY 25TH, 04**

Auction at 2:00 p.m. - Viewing from 1:00 p.m.

**SHERATON PARKWAY HOTEL**

600 Highway 7 East

Some reserves may apply. Sale subject to additions, deletions, errors and omissions. All sales final. Terms: Cash, Visa, Intraac & Certified Cheque. Items may not be exactly as shown. 15% buyers premium to be added. Each item has been certified authentic. All watches have standard one year warranty. Cooper Storing, 1-866-435-5556

Other lease and finance options available. See dealer for details. \*Leasing plans provided by Kia Canada Financial Services. Available on 2005 Spectra 5dr (ST55A5)/2005 Spectra LX (ST5415)/2004 Magentis LX (MS7414)/2004 Sedona LX (SD7524) (the "Featured Models"). Based on a 60/060/60 month lease rate of 4.01% (1.35%/1.85%/1.62%); and a down payment or trade equivalent of \$2,595/\$1,995/\$2,995/\$4,950. First month's lease payment of \$249/\$179/\$215/\$199, plus \$0/\$0/\$995/\$1,150 delivery and destination, and a \$350 acquisition fee, due upon delivery. Total lease obligation for the Featured Models based on an MSRP of \$19,995/\$15,995/\$22,250/\$25,595 is \$17,535/\$12,735/\$15,895/\$16,890 and the option to purchase at end of lease for \$5,877,20/\$4,927,10/\$6,770,05/\$9,127,30 plus applicable taxes. Lease has 20,000 km/yr allowance (other packages available) and \$0.10/km for excess. \*\*2005 Spectra 5dr MSRP from \$19,995, 2005 Spectra LX MSRP from \$15,995, 2004 Sedona LX MSRP from \$25,595, 2004 Magentis LX MSRP from \$22,250. Licence, registration, insurance, delivery and destination, and taxes are not included, unless otherwise stated. MSRP of the Featured Models is shown above. Prices subject to change without notice. Dealer may sell/lease for less. 50% purchase financing is available for a maximum of 36/48/60 months for 2003/2004/2005 vehicles, depending on vehicle. All purchase financing offers exclude delivery and destination, licence, insurance, administration fees and all applicable taxes. Purchase financing example: \$10,000 at 0.0% purchase financing equals \$277.78 per month for 36 months. C.O.B. is \$0 for a total obligation of \$10,000. Offer varies depending on vehicle model. Monthly payment and cost of borrowing will vary depending on amount borrowed, the term and down payment/trade. Certain restrictions may apply. †Featured models are not exactly as illustrated. ††NHTSA (National Highway Traffic Safety Administration) test results. Visit www.nhtsa.dot.gov/cap for full details. See your participating Kia dealer for details. KIA is a trademark of Kia Motors Corporation. †In addition to 2005 Spectra LX features, ††Free Oil and Filter Changes for Life offer refers to a maximum of 3 engine oil, oil filter changes and related labour per 12 months of ownership. Applies to original purchaser only. \*Kia's "Bumper to Bumper" warranty covers most vehicle components against defects under normal use and maintenance conditions. See your participating Kia dealer for details. Visit www.kia.ca for complete details.