

Legacy earns 5-star crash test

(LEFT) - The new Subaru Legacy sedan and Sports Tourer and Outback crossover models have been awarded the best-ever five-star crashworthiness ratings by the Australian New Car Assessment Program.

Subaru's award-winning new Legacy sedan and Sports Tourer and Outback crossover models have been awarded the best-ever five-star crashworthiness ratings by the Australian New Car Assessment Program.

ANCAP is backed by all of Australia's motoring organizations and statutory transport bodies.

The Subaru flagships were subjected to some of the most demanding crash test procedures in the world including a frontal offset crash at 64 km/h (40 mph), a side impact test at 50 km/h (31 mph) and a pedestrian test.

The pedestrian test indicates likely injuries to a person hit by a vehicle travelling at 40 km/h (25 mph).

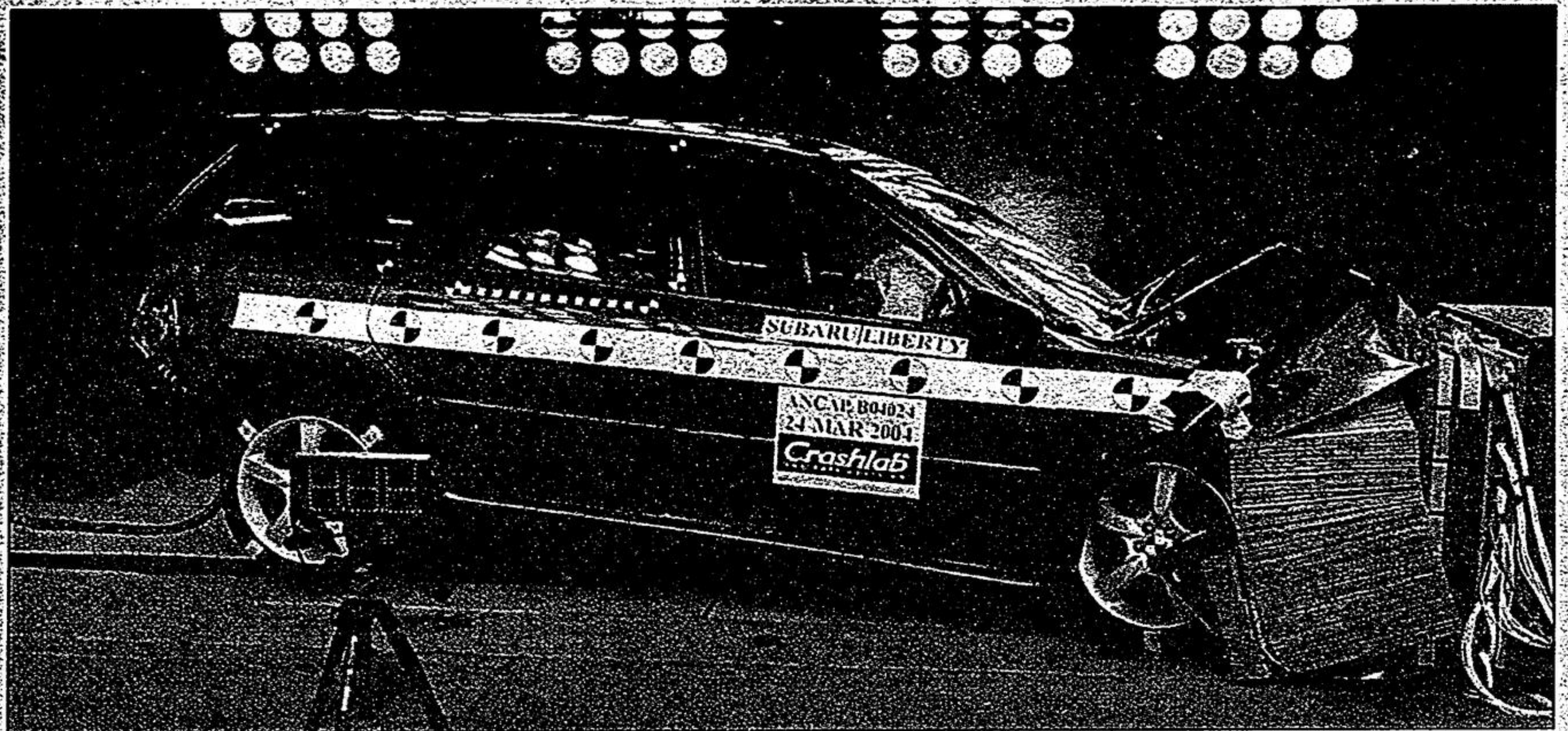
Legacy and Outback models equipped with side and curtain airbags achieved

ANCAP's highest recorded five-star points tally at 35.52 out of a 37 maximum.

Even models without side/curtain airbags achieved a five-star status.

believed to be a world-first. Badged 'Liberty' in Australia, the Legacy and Outbacks also achieved a three-star pedestrian safety result.

The new Legacy - which holds the title of 'Japanese Car of the Year' - has won widespread praise for its active safety provided by symmetrical all-wheel drive.



Subaru Legacy will arrive at dealers early June

From page 12.

ited, the naturally-aspirated engine model is also offered in two trim levels - 2.5i and the fully-loaded 2.5i Limited. Legacy 2.5i and Legacy 2.5i Limited harness the base 168 horsepower, 2.5-litre boxer engine. Adding three more horses to last year's power numbers doesn't sound too impressive at first but better fuel economy, a flatter torque curve and engine weight reduction improves entry-level performance.

Ah, here we are back to performance again. And I could go on and on with the myriad of changes made to enhance to Legacy's ride, handling, just the overall feel of the car - the more responsive rack & pinion steering, the firmer-feeling brakes, a slight drop in power-train height for an even lower centre of gravity and better handling feel. Three different Symmetrical All-Wheel Drive systems, specifically tailored to match each transmission. And enhanced safety, improving on the company's proven Ring-Shaped Reinforcement with standard side-impact air bags, new side curtain air bags and new intelligent dual-stage deployment front air bags.

It's a long list and a good indicator that Subaru is serious about moving the product line up scale with features, amenities and the kind of interior quality that this superior performance package deserves.

You can see that Subaru has confidence in the new Legacy, the first Subaru ever to win the Japan Car of the Year Award in 2004.

"We may stick to our core values and fundamental strengths," said Norio Osakabe, Chairman, President and CEO of Subaru Canada, "but we are going to be a global player with a premium brand."

The new 2005 Legacy sedans and wagons will arrive at dealers in early June.

Prices range from 27,995 to \$43,295 with a variety of levels in between depending on model and trim choices.

Time is running out on this SPECTACULAR SAVINGS EVENT 2003

2003 CALIBRE GT
 • 3.0L V6 200 HP • Sunroof
 • Power Group • 17" Alloy Wheels • And much more
SAVE MORE THAN \$7,000
FROM \$25,800

2003 CALIBRE SPYDER GT
SAVE MORE THAN \$10,000

2004 LANCER ES
ALL NEW
 • Auto • Air • Power Group • And much more.

2004 GALANT ES
ALL NEW
 • Automatic
 • Air Conditioning
 • CD player
 • Power Group
 • And much more.

2004 ENDEAVOUR LS
ALL NEW
 • 3.8L V6
 • Sportronic trans. • 17" Alloy Wheels
 • Power Group

0% FINANCING AVAILABLE ON ALL MODELS

All prices are cash prices. Prices cannot be combined with any other programs or special financing. All applicable taxes, pdl, freight, admin. lic. PPSA extra.

MARKHAM MITSUBISHI

905-415-0080
 4611 Hwy. #7 Markham
 (West of Kennedy) in Unionville