

# Modern conveniences, old fashioned community style.



## Markham, Cornell, 36' Home



The Roseville Corner 'B', 2,498 sq.ft. \$376,990

### Your memories have a new home.

Cornell is a community like no other. Mattamy, as an original builder, helped create the distinctive look of Cornell. And now we're back to continue what we started. Nowhere are the principles of 'New Urbanism' more evident than in Mattamy's Cornell in Markham. A community with plenty of park space and gathering places and unique homes, many with front porches to encourage conversation. Welcome to a community that seems both instantly familiar and refreshingly new. Welcome to Mattamy's Cornell.

- 36' Homes From \$330,990
- 40' Homes From \$382,990
- 44' Homes From \$372,990



## Stouffville, Mattamy on Main, 36' WideLot™

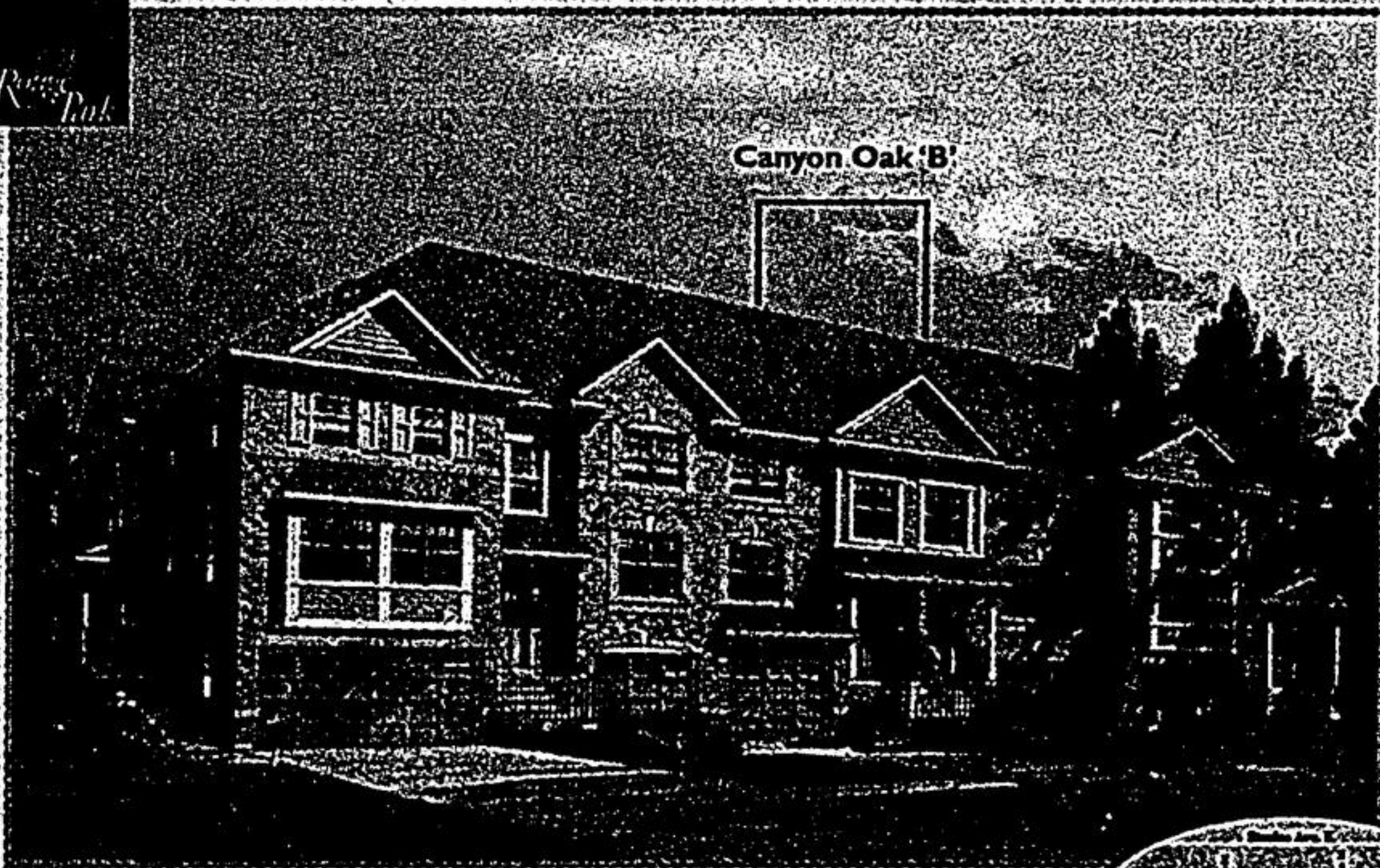


The Clairbrooke 'C', 1,774 sq.ft. \$294,990

- WideLot™ Semis From \$232,990
- 30' WideLot™ Homes From \$273,990
- 34' WideLot™ Homes From \$286,990
- 36' WideLot™ Homes From \$286,990
- 40' WideLot™ Homes From \$337,990



## Scarborough, Mattamy on Rouge Park, Townhome



The Canyon Oak 'B', 1,340 sq.ft. \$230,990

- Townhomes Homes From \$207,990
- Semi-Detached Homes From \$262,990
- Live/Rent Townhomes From \$297,990
- perfect for extended families

[www.mattamyhomes.com](http://www.mattamyhomes.com)

Presentation Centre Hours: Monday to Thursday 1pm-8pm; Friday 1pm-6pm; Saturday, Sunday and Holidays 11am-6pm

All illustrations are artist's concept. All dimensions are approximate. Specifications, terms and conditions subject to change without notice. E.&O.E.

