

YOUR COMMUNITY REALTY



V. J. VUKOBRA TOVIC
Broker/Owner



KAREN GERARDO
Manager

ROYAL LEPAGE

161 Main Street
(905) 477-1111
Visit us at www.royallepage.com

HOMES FEATURED AT WWW.JAGOHOMES.COM



OPEN HOUSE SUNDAY 2-4

90 Stuart Street, Stouffville. Four Level Sidesplit. Beautiful Fully Finished Lower Levels. Private Yard. \$339,900



NEW LISTING

Beautiful 3+2 bdrm bungalow on sought after Crescent in Stouffville. Fully Finished Bsmt, Separate Entrance. \$359,900

Call MICHELE or FRANK JAGO* for a Private Showing 905-642-6333



JUST LISTED! FOR LEASE... \$3900/M

Stunning country home located minutes from Unionville. Picturesque setting - private back gardens. 3 bedrooms. Bright open concept - includes appliances, CAC, CV, sprinkler system, snc system. Fin lower level.

FOR MORE INFORMATION OR A PRIVATE SHOWING CALL DEBBIE PARK/LEN POWELL* 905-477-1111



DOMINIQUE ALLARD



BRYAN ARMSTRONG



DAVE BAKSHI



AILSA ATTERSLEY



LINDA BAL



HUGH BARNSELY



GEORGE T. BOURNE



SANDRA BROWN



HELEN BUELL



STAN BUELL



ANNE CAIRNS



JEFF CHAN



LINDA CHAPMAN



RITA CHEMILIAN



MARIO COLANGELO



CAROLE DANARD



ZEBEDAH DIN



NIKKI ELYETT



PAMELA FELGATE



MARIE FLETCHER



ERIC GENGENBACH



PETER GERVINO



TODD EDWARDS



GORDON HIGHET



VINCE MONCADA



TODD A. GERARD



DEBBIE WHITE-MILLS



GORDON HIGHET



GORDON HIGHET

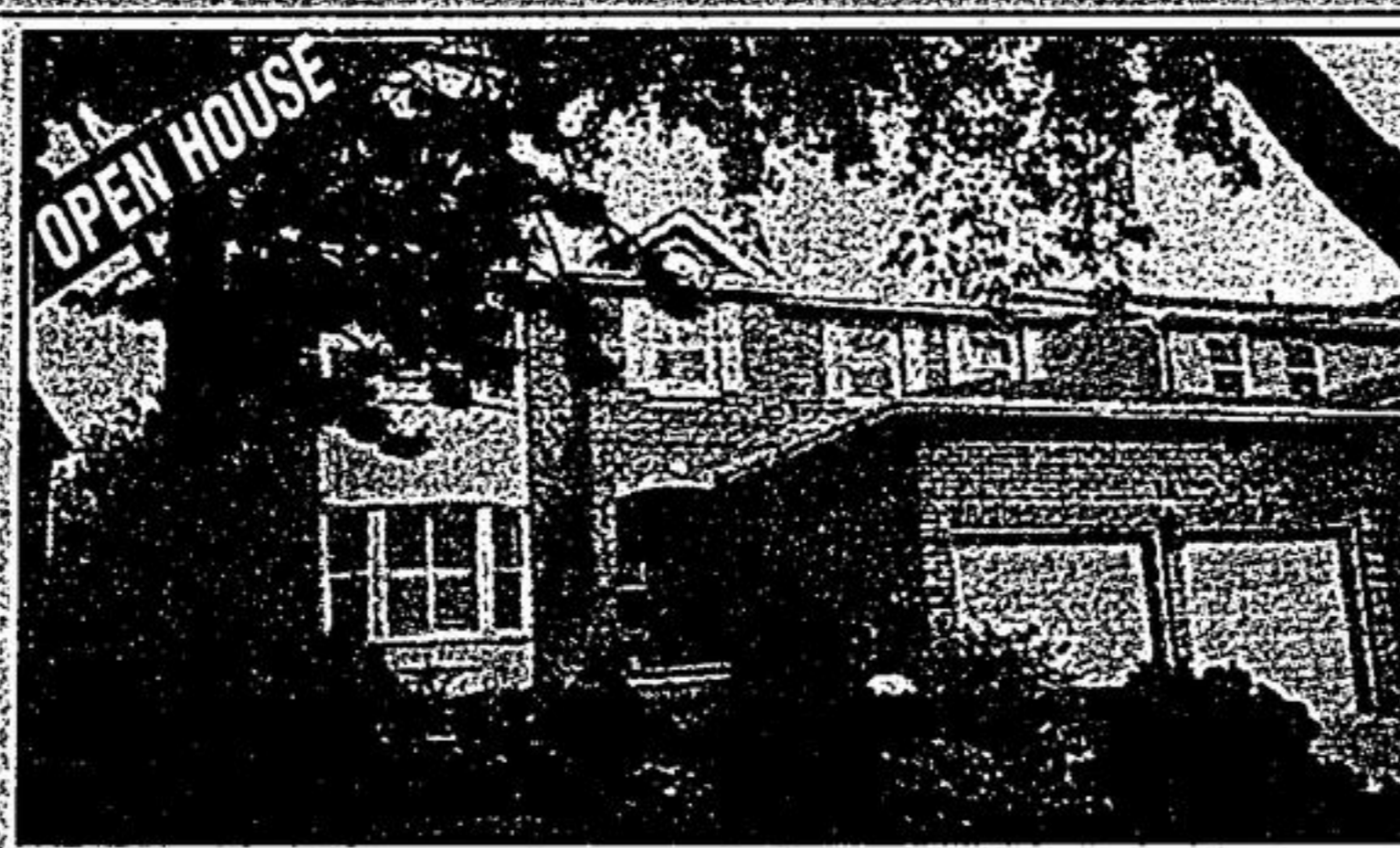


GORDON HIGHET



FABULOUS GARDEN - 92 FOOT FRONTAGE

Bridletrail Beauty on rare fully landscaped lot. Enjoy sunsets from this two level entertaining sized deck. Walk to schools, shops and Main St. Unionville. Greenhouse type eat in kit. with bright south/west exposure. 3 bdr. 3 bath, hardwood in kitchen & family rm. Upgraded windows. Move in condition. Offered at \$414,900. FOR PERSONAL SERVICE AND QUICK RESULTS CALL DOROTHY* OR SANDRA MASON* 905-940-4180



OPEN HOUSE

ABSOLUTELY STUNNING

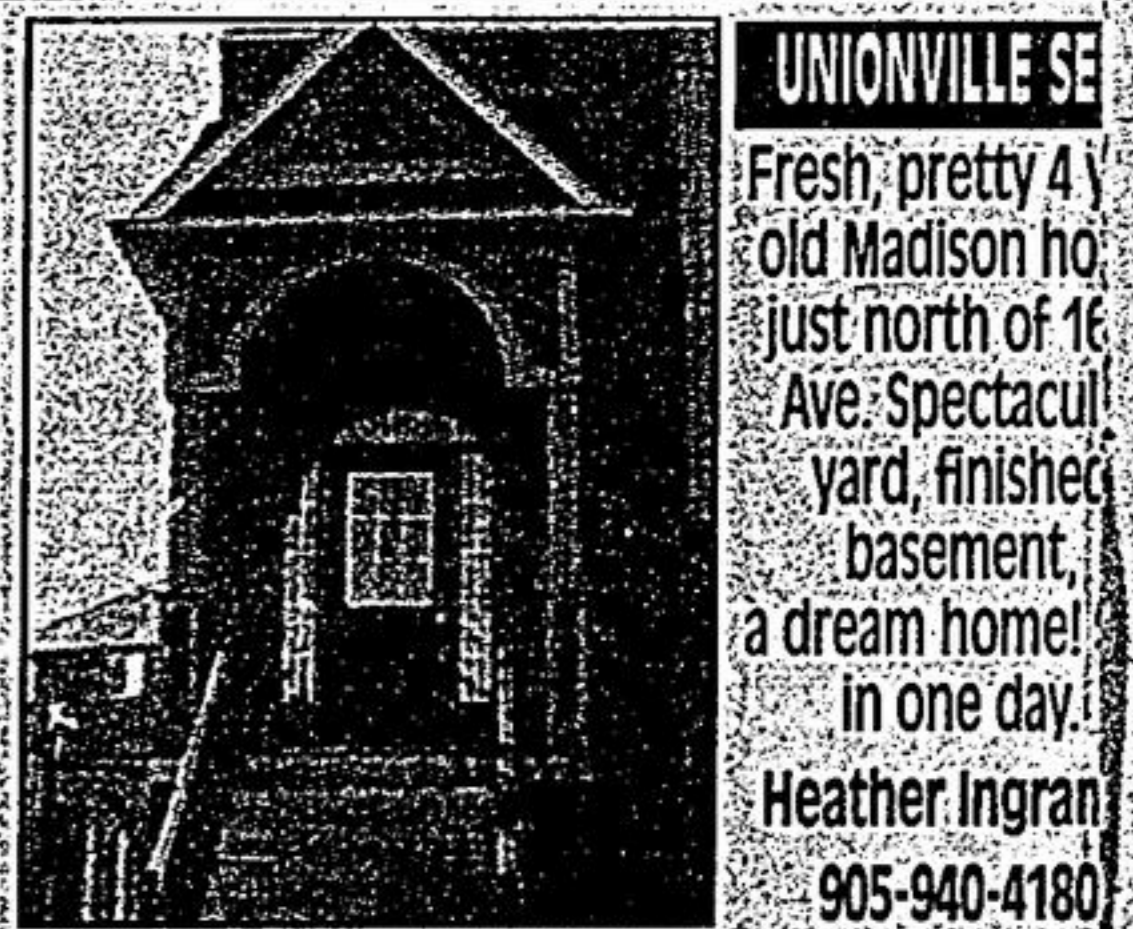
88 Braeside Sq. Sunday 2-4 pm. Beautiful 3100 sq. ft. Bramalea home loaded with luxury features. Center hall plan. Formal dining room. Spacious open area for entertaining has hardwood floors. 9' ceilings. Skylights. Marble gas fp. W/o to huge deck on premium 161' lot. French doors. Moldings. Granite. Tasteful decor creates understated elegance. \$569,000

Call Helen*/Stan** Buell 905-940-4180



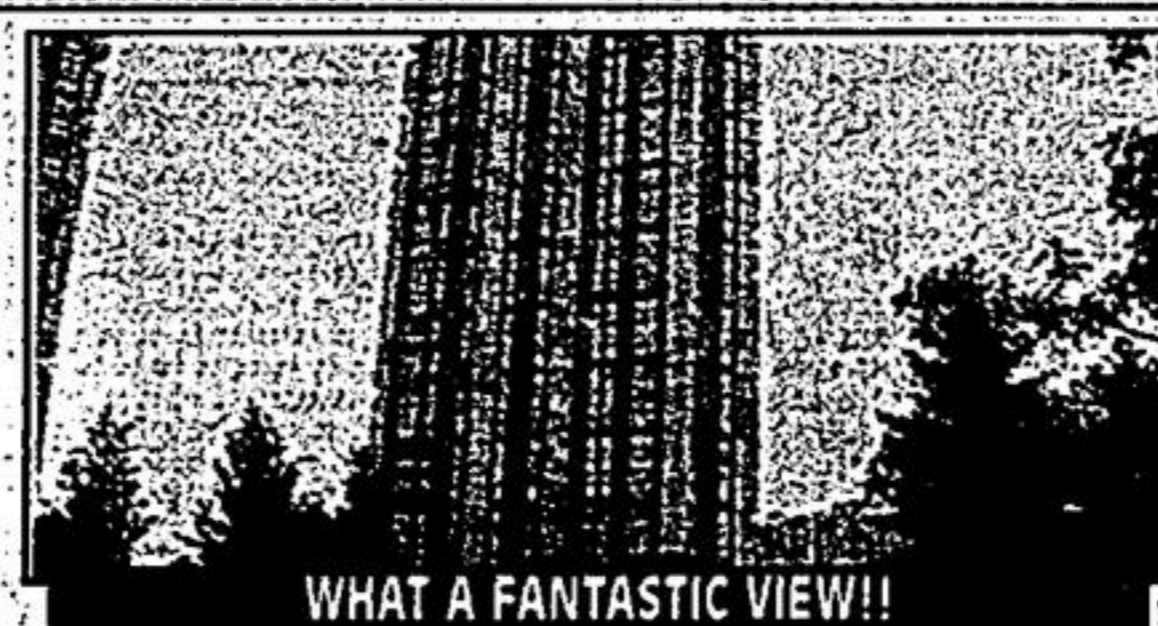
OPEN HOUSE SUN 2-4

UNIQUE LOW RISE BUILDING WITHIN WALKING DISTANCE TO SCHOOLS AND SHOPPING. \$229,900 End unit overlooking park. fireplace, 2 bedrooms. \$259,900 Corner unit overlooking park. 2' walkouts/balcony. Call ask for 905-477-1111



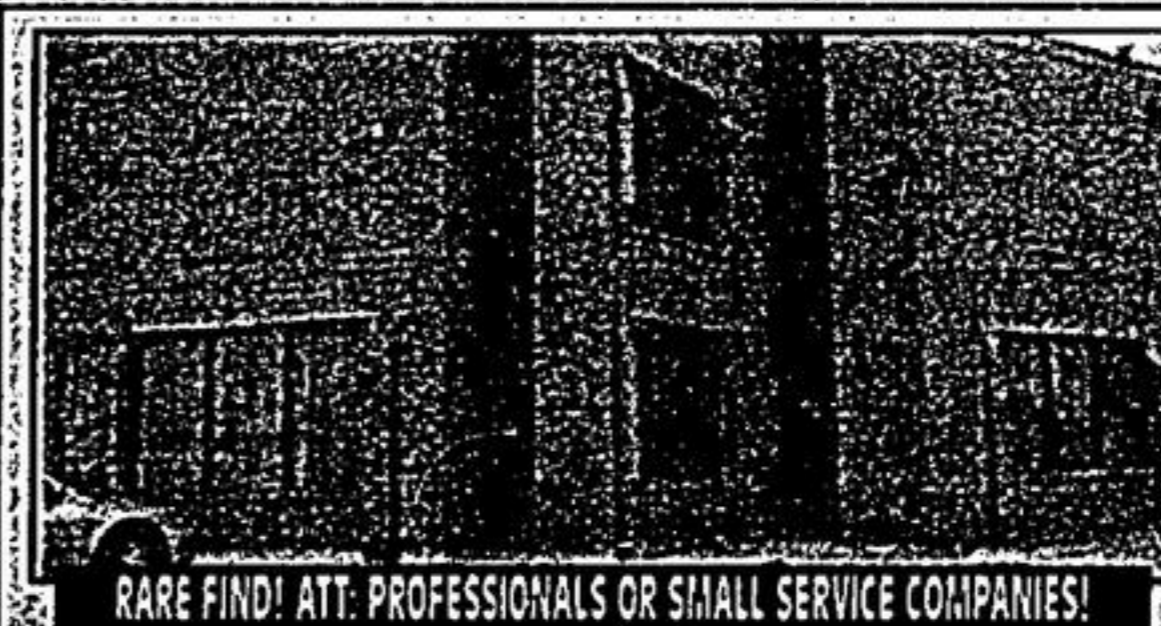
UNIONVILLE SE

Fresh, pretty 4 yr old Madison home just north of 16 Ave. Spectacular yard, finished basement, a dream home! in one day. Heather Ingran 905-940-4180



WHAT A FANTASTIC VIEW!!

* 1 bdrm + solarium * Convenient location * Top quality facilities * Aug. 1 possession * Only \$194,900 * Call: Gordon Highet* 905-940-4180



RARE FIND! ATT. PROFESSIONALS OR SMALL SERVICE COMPANIES!

700 sq. ft. (approx.) 2nd flr office space for lease? Avail. immediately. Great loc in new development area. Near Hwy 48 & Bur Oak. Steps from GO! Check my website "hughbarnsley.com" Hugh Barnsley* 905-940-4180



BIG HOUSE! SMALL PRICE!

Greenpark quality! Spacious family size home in desirable Raymerville area. 5 bdrms, 3 baths, huge kitchen family rm with bar. Great value! Call Anne Cairns* 905-940-4180

FREE BOOK

How To Sell Your Home

This is an excellent step-by-step guide for homesellers. To obtain your free copy, call 416-520-2286. This program is sponsored by Rita Chemilian** 905-940-4180

LOOKING TO MAKE A MOVE?

Now is a great time Listing Shortage! Net more than you'd think. Call Debbie White-Mills* for a free home evaluation. 905-642-6333 or 905-940-4180 www.stouffville.com

\$439,000

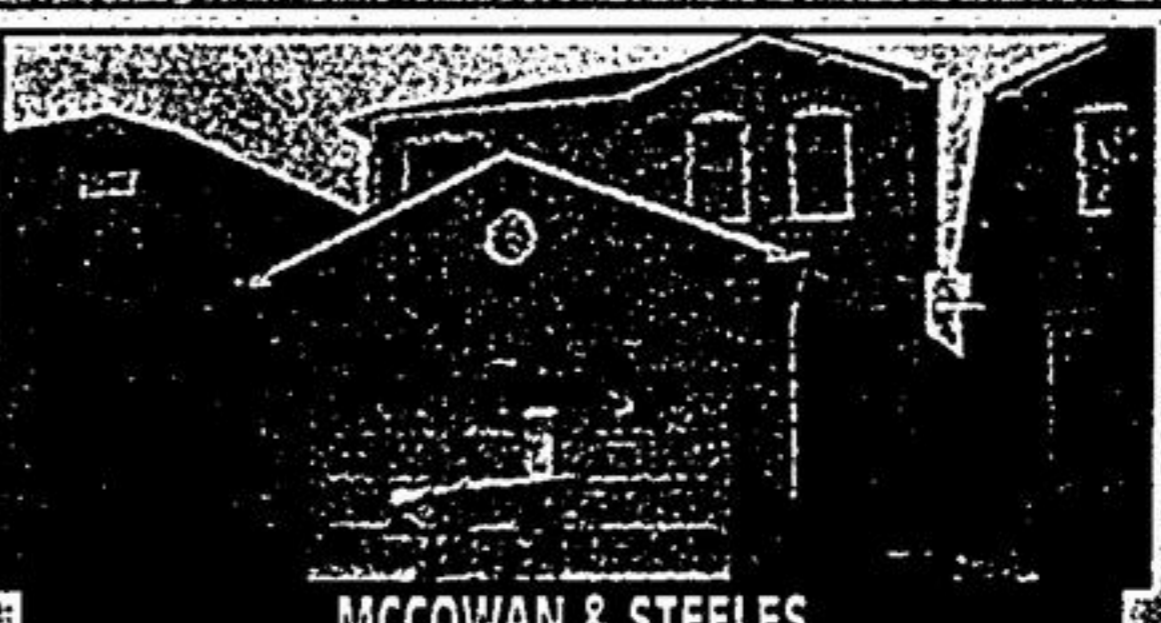
QUALITY MONARCH HOME

1 year new, 9' ceiling, 4 bdrm/4 baths, tons of upgrade skylight, oak staircase, CAC, CVAC, 5 appliances, best price in the area, close to park, pond. Must see! To view call Zebedah Din* 905-940-4180



KINGSMERE ESTATE HOME \$599,900

Beautiful Custom 5 Bdrm Kingsmere Estate Home located E. of Toronto. Approx. 3700 sq. ft. Parquet Flooring. Double Entry to Bsmt. Lrg Cedar Deck. Interlock Driveway. Front Entry Glass Enclosure. Close to schools, TTC, GO & Parks. Please call Todd A. Gerrard* 905-940-4180



MCCOWAN & STEELES

Upgraded thruout 2 stry, mn flr. fam rm, 4 bdrm, 3 baths, 2 car garage. Beautiful hrwd flrs, new kitchen, CAC. Walk to schools & TTC. Dave Bakshi* 905-940-4180



MARKHAM RD & STEELES

Brookside on the Rouge. 1 1/2 yrs new, 3 bdrm w/ensuite, open concept great room, fireplace w/sitting area, hardwood & ceramic floors. To view call Vince Moncada* 905-940-4180