

OUTDOOR GARDEN CENTRE NOW OPEN

Premium (Assorted Varieties)

Tomato Plants  **.88** ea.

Available in many colours

Cineraria  **1.98** 4" pot

GARDEN CENTRE BUSINESS HOURS: Mon: 9-8 pm, Tues: 9-8 pm, Wed: 9-8 pm, Thurs: 9-8 pm, Fri: 9-9 pm, Sat: 7-7 pm, Sun: 8-6 pm



The GARDEN



"Quality & Freshness"

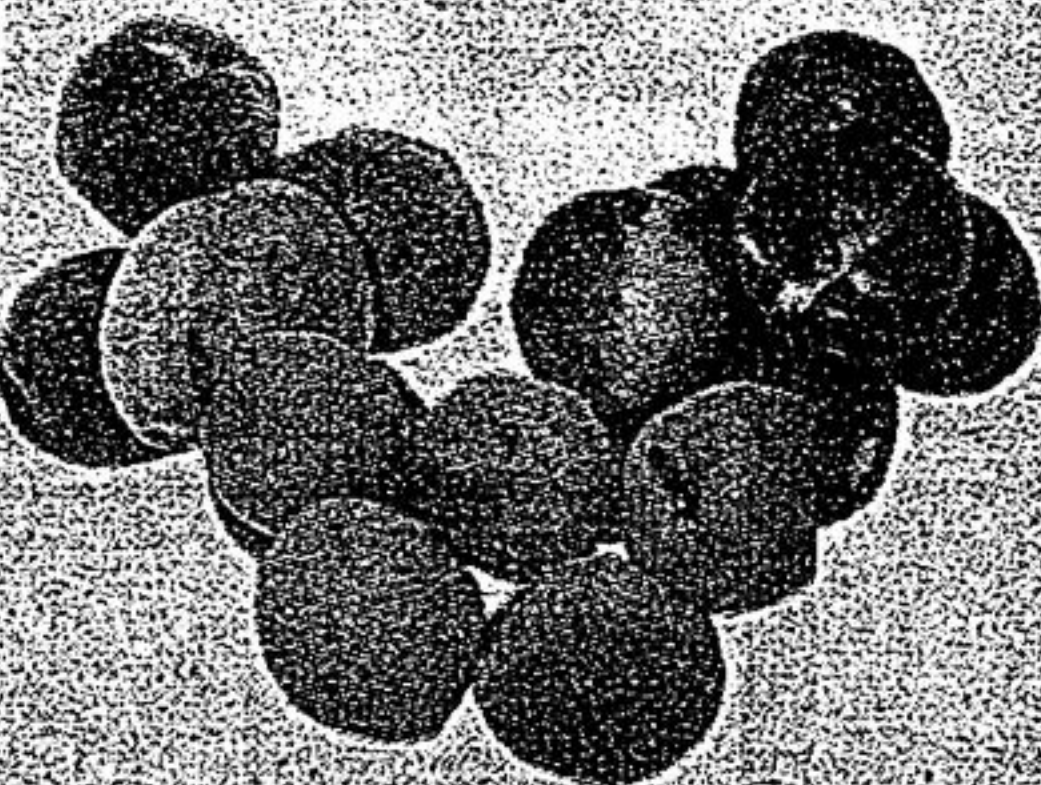
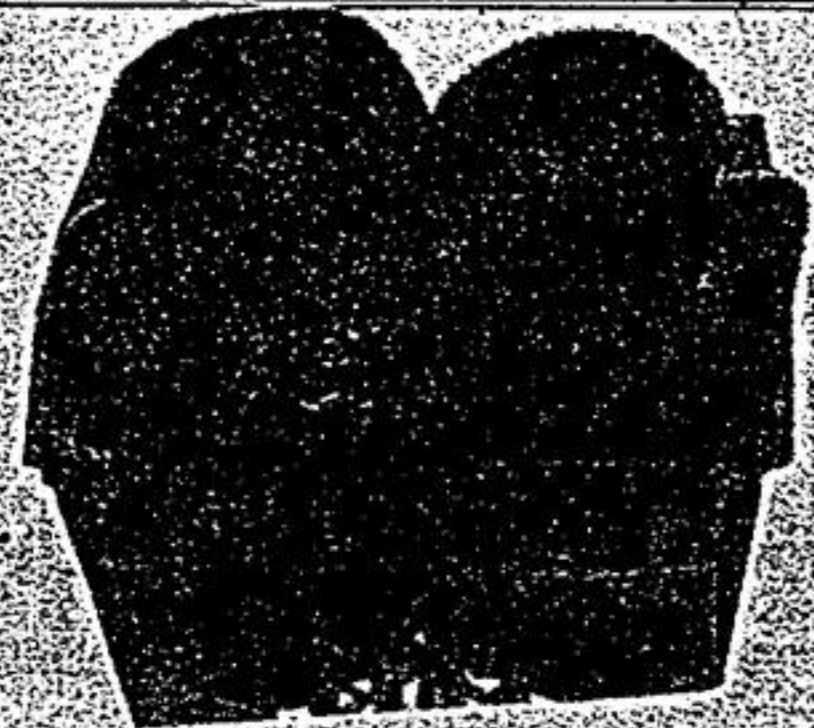
Prices in effect Thursday, May 13, 2004

"FRESH FROM OUR GARDEN TO YOUR BASKET"

Quality Fresh Produce

California Fresh
Lusciously Sweet
Strawberries

1.98
pint

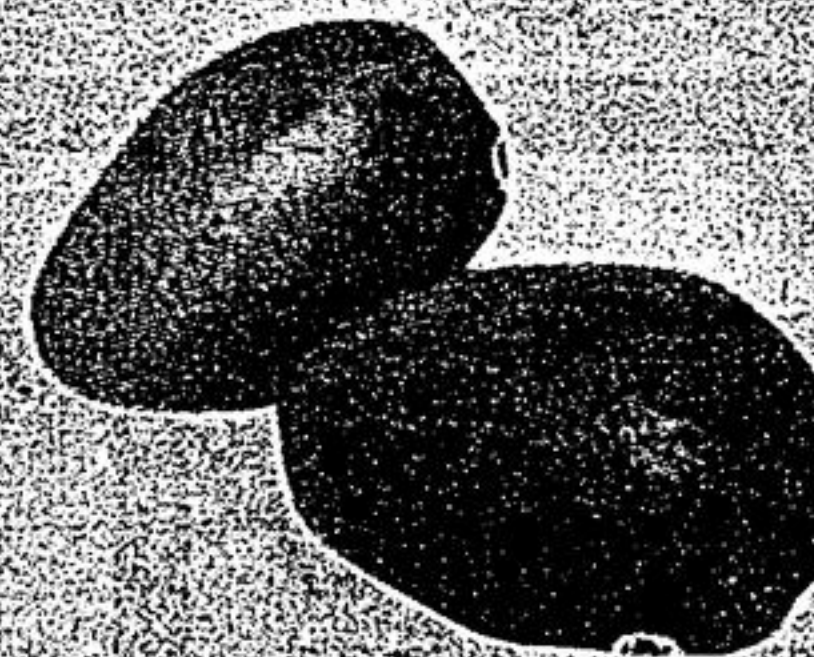


California Fresh, Tree Ripe
Sweet 'N Juicy
**Peaches,
Nectarines
& Apricots**

1.98
lb. 4.37kg

"The Mexican Heat Makes Them Juicy-Sweet!"
Extra Large
Mangoes

.78 ea.



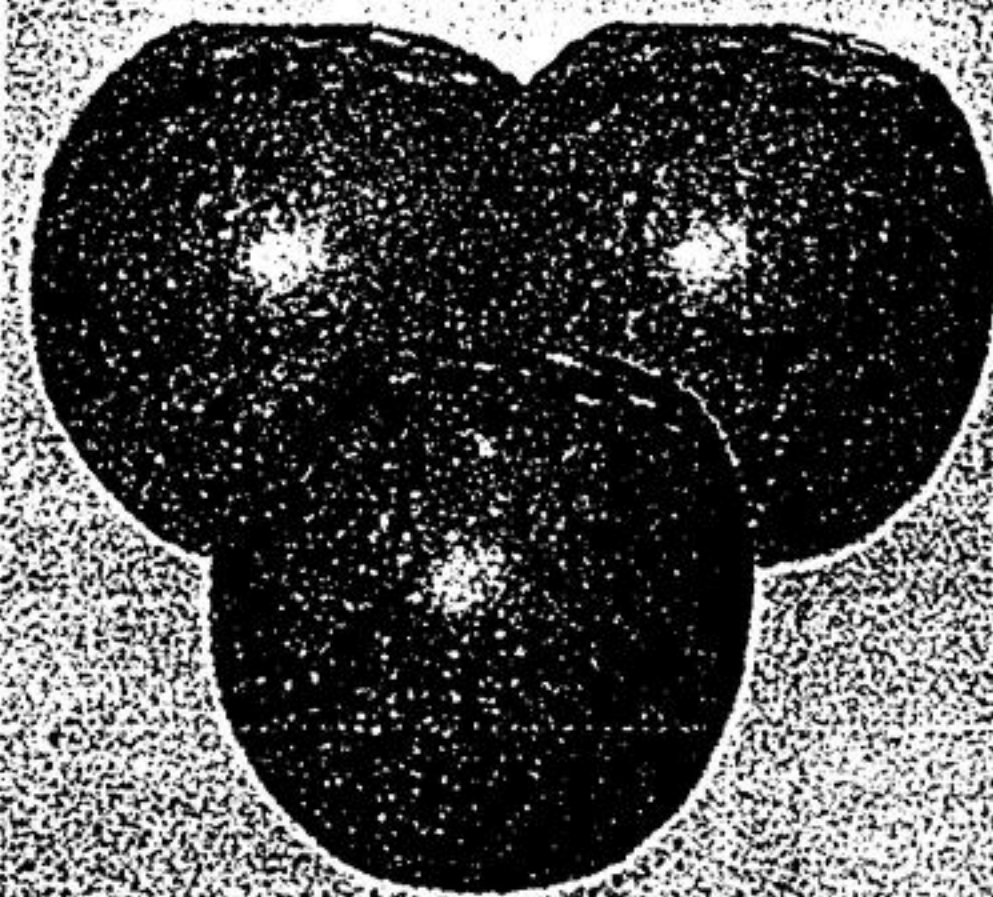
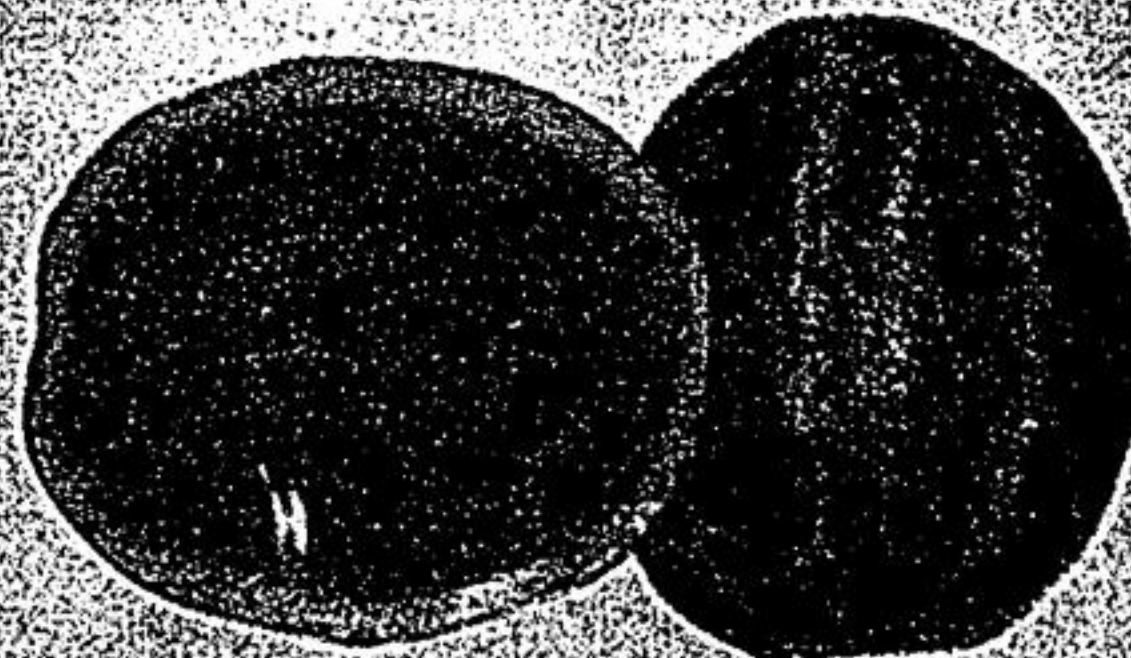
Product of California
Fresh and Crisp
Head Lettuce

.78 ea.

Fresh from Baja California
Super-Sweet & Juicy

**Seedless
Watermelon**

4.98 ea.



Product of Canada, Extra Fancy
Crisp 'N Sweet
**Fuji
Apple**

.98
lb. 2.16 kg

Product of U.S.A.
Crisp 'N Fresh
**Regular
Cucumbers**

2/98



Product of California
Tender 'N Fresh
Artichokes

.98
lb. 2.16 kg

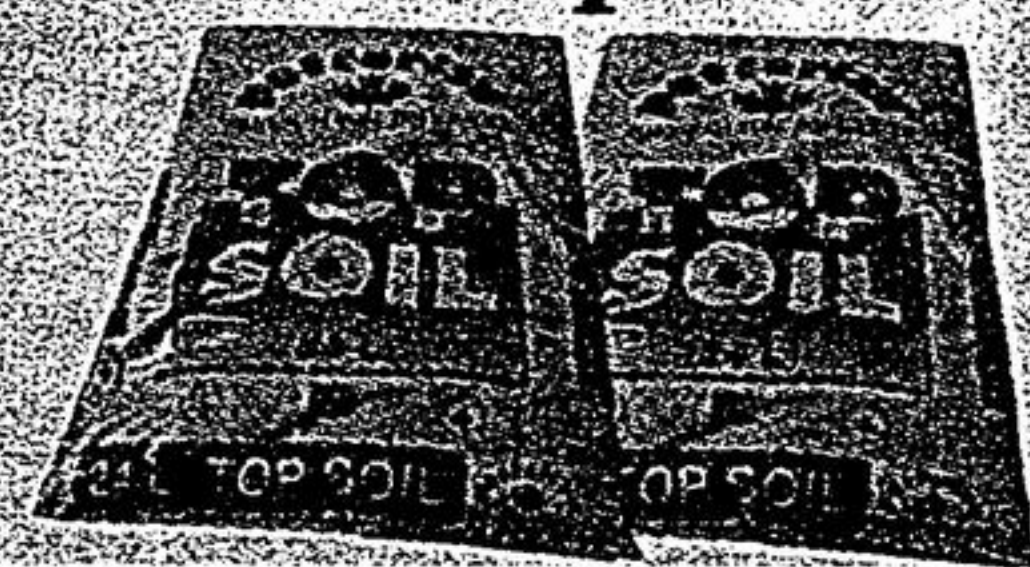
HOT PRICE

Pefferlaw Composted

Top Soil

.98

Limit of 10



24 L bag

HOT PRICE

Admiral

Flaked Light Tuna

LESS THAN 1/2 PRICE

.48

Limit 6



170 g

HOT PRICE

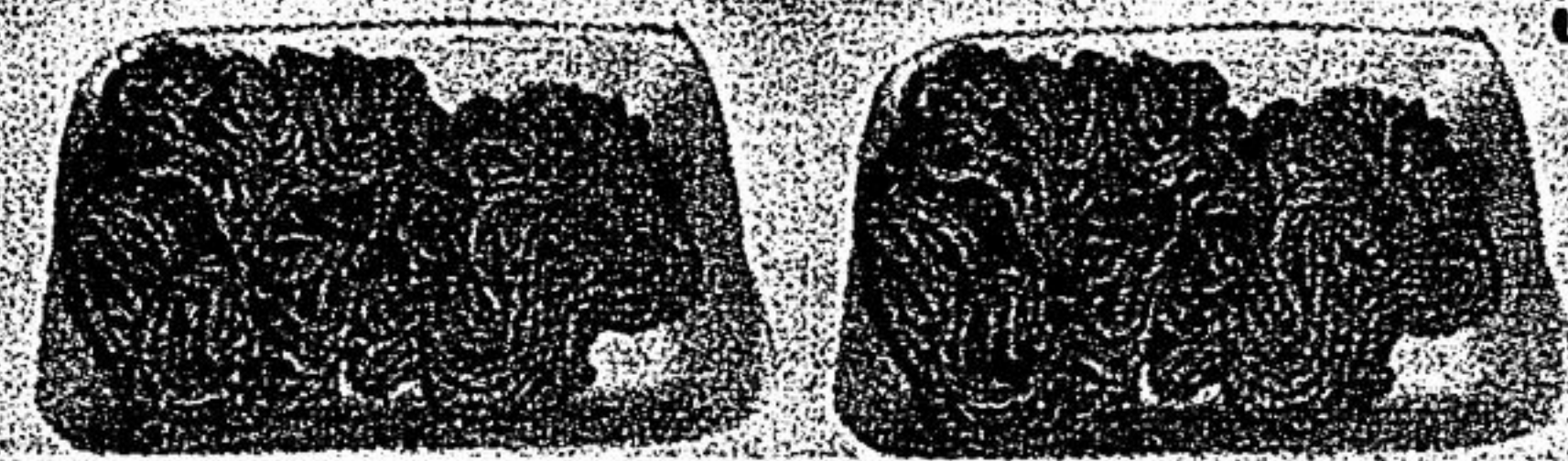
GREAT ON THE EGG

Fresh

**Extra Lean Ground
Chicken or Turkey**

SAVE \$1.60/LB

1.88
lb. 4.14 kg



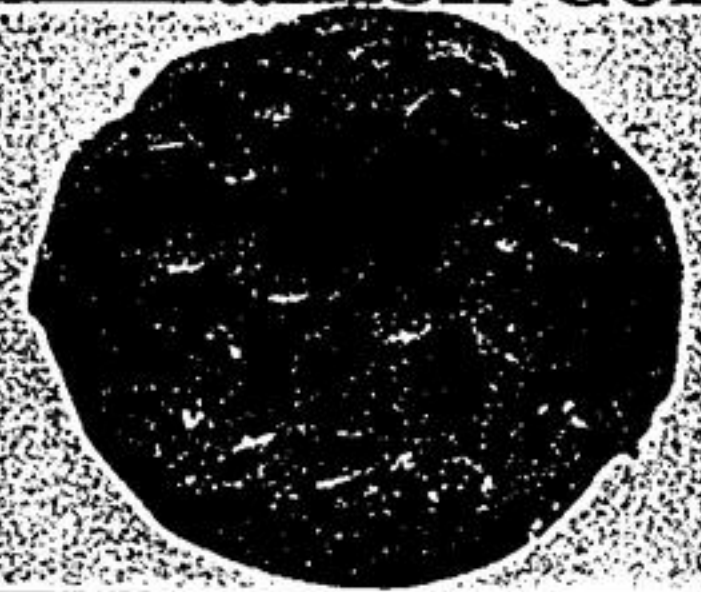
Oven Fresh Bakery

In Store Baked
White Bread



.98
loaf

Open Window
Cinnamon Coffee Cake



5.98
1 lb. 1 kg cake

Daily Good Health
Mini Golf Bagels



2.88
18 pack

Saladland Salads
*Coleslaw *Macaroni *Potato



1.78
500 g tub

Proud supporter of
The Markham
Stouffville
Hospital

REGULAR
BUSINESS
HOURS

MONDAY
8 am - 9 pm

TUESDAY
8 am - 9 pm

WEDNESDAY
8 am - 9 pm

THURSDAY
8 am - 9:30

*We reserve the right to limit quantities. *No rainchecks. *Savings based on regular price. *both copy and illustrations, errors may occur. We reserve the right to correct any error.