

roll into Sears for Michelin, RoadHandler & Quaker State products for your car

# CLEARANCE! WHILE QUANTITIES LAST RoadHandler® MAXIMIZER PLUS PASSENGER TIRES

## save 20%

Sale, from 51.18 each. P175/70R13.  
120,000 km Tread Wearout Warranty\*. #49000 series

### ROADHANDLER

Size	Sale, each
RoadHandler Maximizer Plus tires	
P185/75R14	55.98
P195/75R14	59.18
P205/75R14	62.38
P215/75R15	69.58
P235/75R15XL	76.78
P185/70R14	58.38
P195/70R14	61.58
P205/70R14	63.98
P205/70R15	67.98
P215/70R15	69.58
P225/70R15	75.18
P175/65R14	57.58
P185/65R14	61.58
P195/65R15	67.98
P205/65R15	71.18
P215/65R15	75.18
P215/60R16	74.38
P225/60R16	75.98
P205/55R16	87.98



### MICHELIN AGILITY PREMIUM PASSENGER TIRES

## save 25%

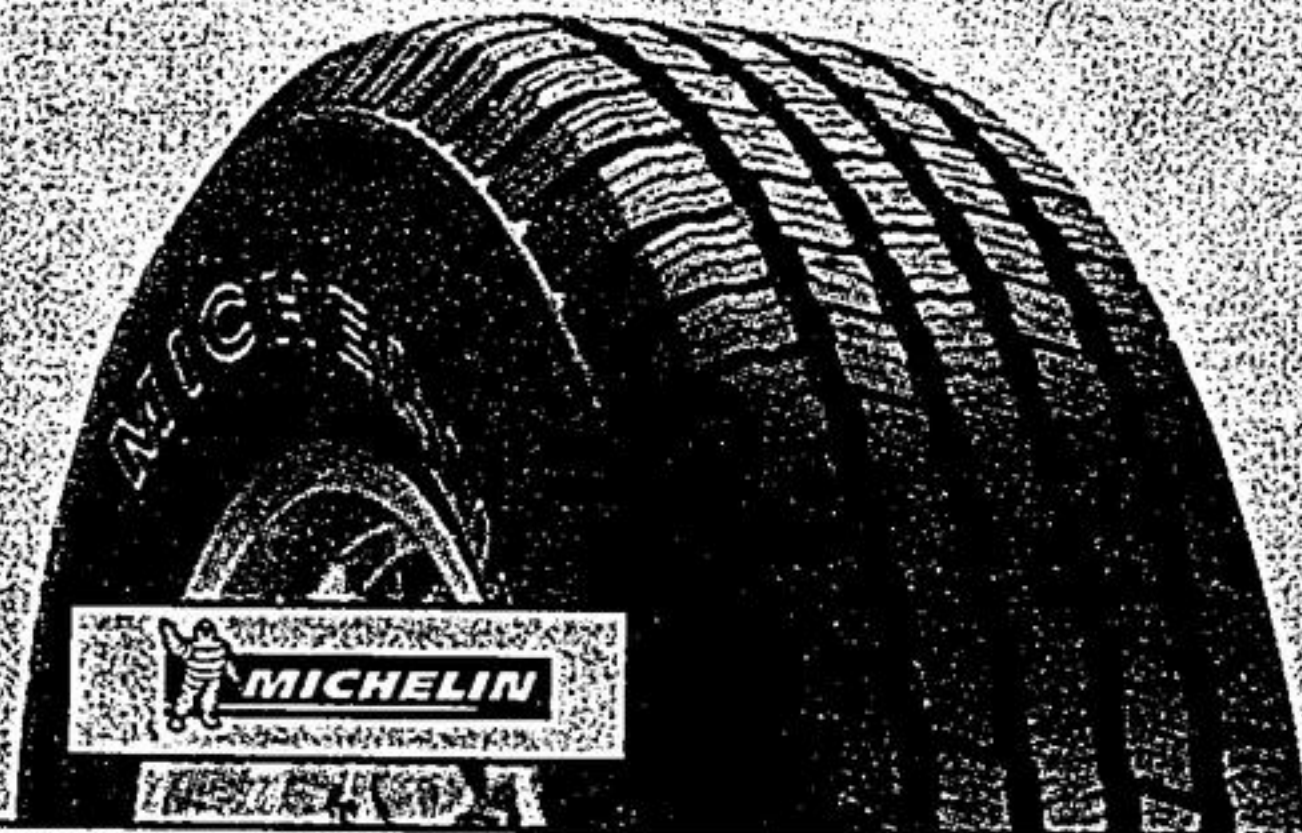
Sale, from 74.99 each. P175/70R13.  
130,000 km Tread Wearout Warranty\*  
#79000 series. Other sizes, sale 91.49-118.49 each.



### MICHELIN XC-LT4 SUV/LIGHT TRUCK TIRES

## save 25%

Sale, from 108.74 each. P215/75R15.  
80,000 - 100,000 km Tread Wearout Warranty\*  
#45000 series. Other sizes, sale 112.49-164.99 each.



### WHEEL ALIGNMENT

## 59.99

most vehicles

Check and adjust tire pressure, camber, caster and toe to manufacturer's specifications as required.  
Check front and rear steering, suspension components. Adjust shims and rear axle, if needed.  
Parts not included



### QUAKER STATE OIL PACKAGES

24.99 Conventional  
34.99 Semi-synthetic  
49.99 Full-synthetic

Includes up to 5 litres of Quaker State bulk motor oil and filter (filter price up to 4.99).  
24-point courtesy inspection and report.  
Top up fluids under hood; lubricate chassis and doors.  
#45012/13/15  
Environmental fees extra

Sale prices end Saturday, May 8, 2004, while quantities last

\*Complete warranty details at Sears

Shops on Steeles & 404  
905 882-6194

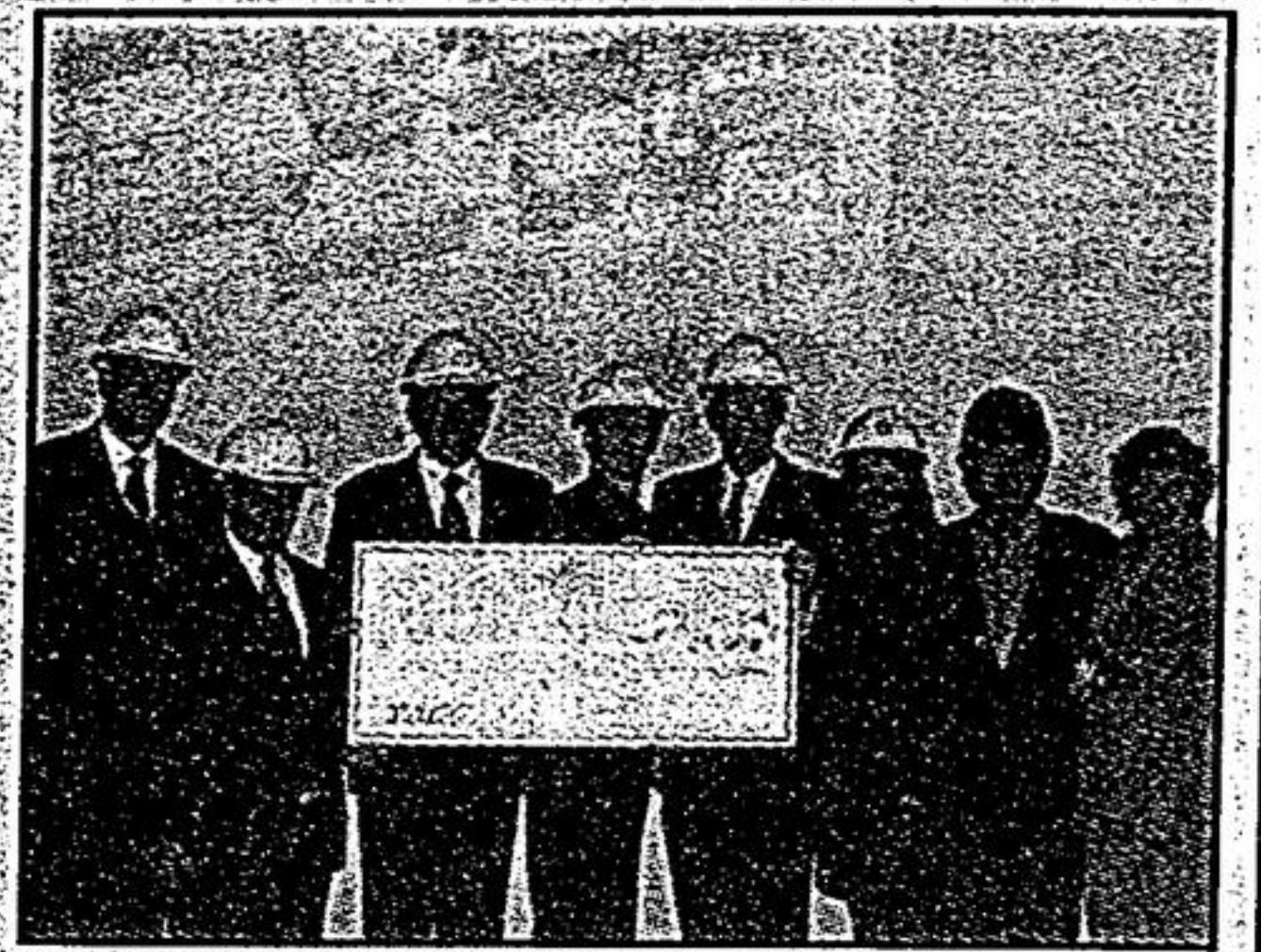
SEARS auto care

NEU51A1U9 ZUU4, Sears Canada Inc.

### ADVERTISING FEATURE

## IN OUR COMMUNITY

Pictured left to right, Dr. James MacLean (President, Markham Stouffville Hospital), John De Gasperis (TACC), the Honourable Maurizio Bevilacqua (MP, Vaughan-King-Aurora), Dr. James Meindok (MRI Director), the Honourable Don Cousens (Mayor of Markham), Lynne Campkin (Director, Diagnostic System), Silvio De Gasperis (TACC) and Marion Zimmer (MSH Foundation) celebrate a \$25,000 donation from Maurizio Bevilacqua's Bike Ride 2003. TACC was a major donor to the Bike Ride initiative.



The donation will help to fund the Magnetic Resonance Imaging (MRI) equipment. The celebration and cheque presentation took place in the new space that has been built for the MRI.

A team from the Ministry of Health and Long Term Care recently visited the future site of the MRI suite at the Hospital. Dr. James MacLean, President, anticipates opening the new diagnostic service quickly following receipt of final approval from the Minister of Health. A Campaign to raise the \$3.6 million for the MRI is currently underway.

## HIGHWAY 404 MID-BLOCK CROSSING BETWEEN HIGHWAY 7 AND 16TH AVENUE MUNICIPAL CLASS ENVIRONMENTAL ASSESSMENT (SCHEDULE C) NOTICE OF STUDY COMMENCEMENT

The Regional Municipality of York jointly with the Town of Richmond Hill and the Town of Markham are initiating a Transportation and Class Environmental Assessment Study (Class EA) to address the need for additional capacity across the Highway 404 corridor between Highway 7 and 16th Avenue. The potential issues to be studied include roads, transit, intersection and operational improvements. The study area is shown on the attached key map and is bounded by Leslie Street to the west, Woodbine Avenue to the east, Highway 7 to the south and 16th Avenue to the north.

This project is being planned in accordance with Schedule C of the Municipal Class Environmental Assessment (June 2000). Consultation will be an integral component of this project. Members of the public and review agencies are invited to provide input into the overall planning of this project.

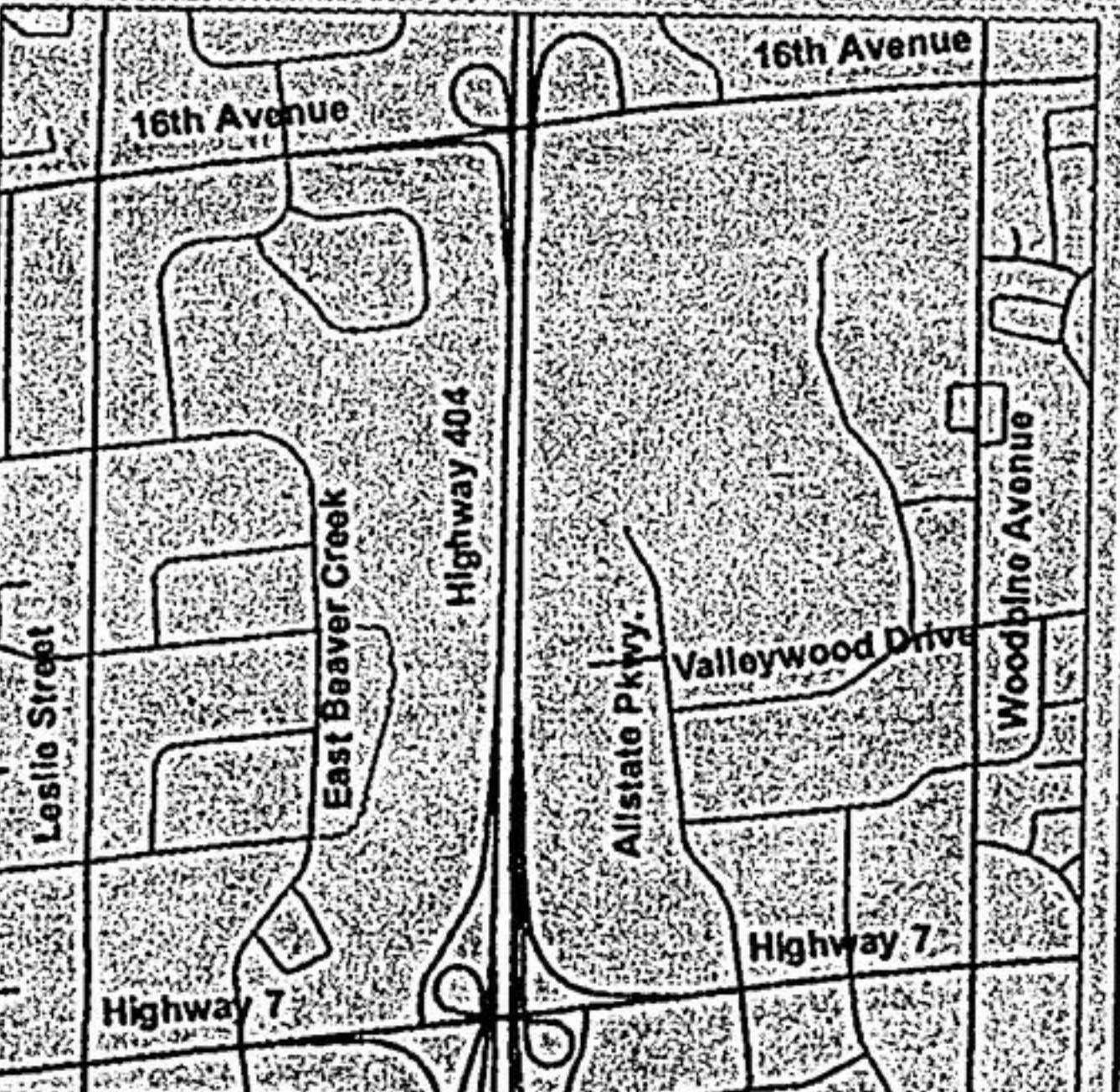
This project is currently scheduled to be completed by the end of 2004. Two rounds of Public Consultation will be advertised at a later date. Comments and information regarding this study are welcome to aid in the planning of this undertaking. This material will be maintained on file for use during the study. With the exception of personal information, all comments will become part of the public record.

As part of the consultation process, a mailing list is currently being compiled. If you wish to receive information or plan to submit comment, please contact any one of the four team members:

Scott Thorburn  
URS Canada Inc.  
75 Commerce Valley Drive East,  
Markham, Ontario, L3T 7N9  
Tel: (905) 882-4401 ex. 534  
Fax: (905) 882-4399  
e-mail: scott\_thorburn@urscorp.com

Steve Mota  
The Regional Municipality of York  
17250 Yonge Street  
Newmarket, Ontario, L3Y 6Z1  
Tel: (905) 830-4444 ex. 5056  
Fax: (905) 895-0191  
e-mail: steve.mota@region.york.on.ca

George Flint  
Town of Richmond Hill  
225 East Beaver Creek Road  
Richmond Hill, Ontario, L4B 1M7  
Tel: (905) 771-8830 ex. 2455  
Fax: (905) 771-2405  
e-mail: gflint@richmondhill.ca



Lloyd Fernandes  
Town of Markham  
101 Town Centre Boulevard  
Markham, Ontario, L3R 9W3  
Tel: (905) 477-7000 ex. 2414  
Fax: (905) 479-7773  
e-mail: lfernandes@markham.ca



# GO LEAFS GO