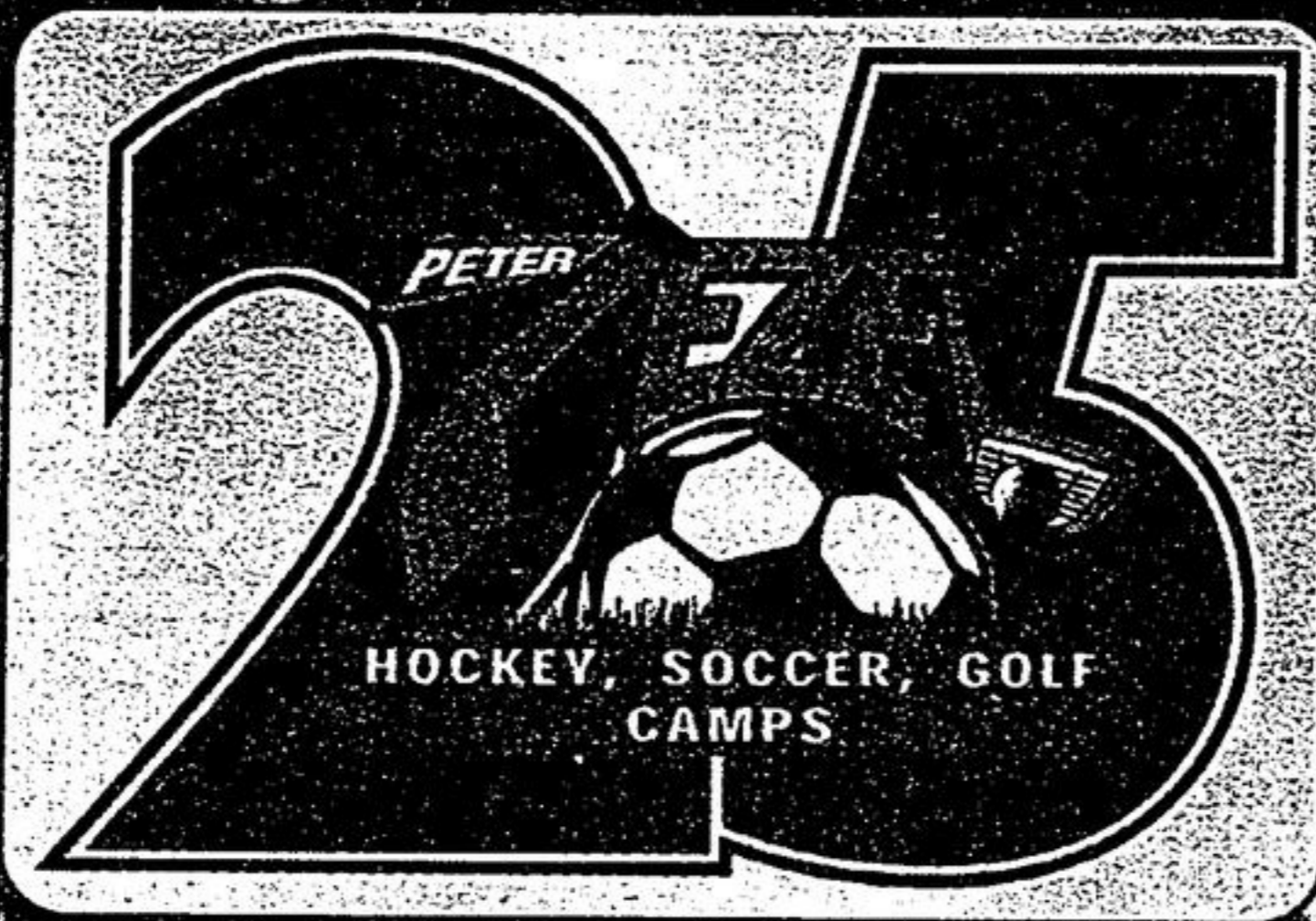


**Upon delivery of any advertised vehicle during the month of April, you receive 1 week at the Peter Zezel Hockey and Soccer camp.**

See dealer for details.



This offer cannot be combined with any other offers or incentives.



**2004 GRAND CHEROKEE LAREDO**



**\$509** /MNTH \$0 DOWN

**\$459** /MNTH \$2,500 DOWN

**\$399** /MNTH \$5,000 DOWN

4.0L I6, 4spd auto, cloth int, trailer tow pkg, power/heated fold-a-way mirrors, fog lights, pw, pl, stk # 24-138

**KNOCKOUT CASH SALE PRICE: \$32,498\***

48 MONTH LEASE\*

**2004 DODGE DURANGO LIMITED**



**\$749** /MNTH \$0 DOWN

**\$679** /MNTH \$2,500 DOWN

**\$599** /MNTH \$5,000 DOWN

5.7L 5 spd auto HEMI V8, trailer tow pkg, prem leather int, traction control, auto 4WD, side air bags, rear seat DVD system, on/off rd tires, pwr roof, stk # 24-342

36 MONTH LEASE\*

**2004 CHRYSLER SEBRING TOURING EDITION**



**\$439** /MNTH \$0 DOWN

**\$369** /MNTH \$2,500 DOWN

**\$299** /MNTH \$5,000 DOWN

2.7L V6, 4 spd auto, conv group, pwr sunroof, prem cloth, pw, pl, pm, keyless, pwr driver seats, cast wheels, stk # 24-131

**KNOCKOUT CASH SALE PRICE: \$22,618\***

36 MONTH LEASE\*

**2004 CHRYSLER PT CRUISER TOURING EDITION**



**\$399** /MNTH \$0 DOWN

**\$319** /MNTH \$2,500 DOWN

**\$249** /MNTH \$5,000 DOWN

2.4L 4 cyl, 4 spd auto, prem cloth int, pwr sunroof, pwr driver seat, 16" cast wheels, pw, pl, pm, keyless entry, stk # 24-132

**KNOCKOUT CASH SALE PRICE: \$26,998\***

36 MONTH LEASE\*

**2004 CHRYSLER 300M**



**\$569** /MNTH \$0 DOWN

**\$509** /MNTH \$2,500 DOWN

**\$459** /MNTH \$5,000 DOWN

3.5L H.O. V6, 4 spd auto, luxury grp, 6 disc CD changer, infinity spkrs, pwr s/roof, 17" chrome clad wheels, prem leather int, stk # 24-047

**KNOCKOUT CASH SALE PRICE: \$34,688\***

48 MONTH LEASE\*

**2004 DODGE RAM 1500 QUAD CAB 4X4 "HEMI SPORT"**



**\$449** /MNTH \$0 DOWN

**\$379** /MNTH \$2,500 DOWN

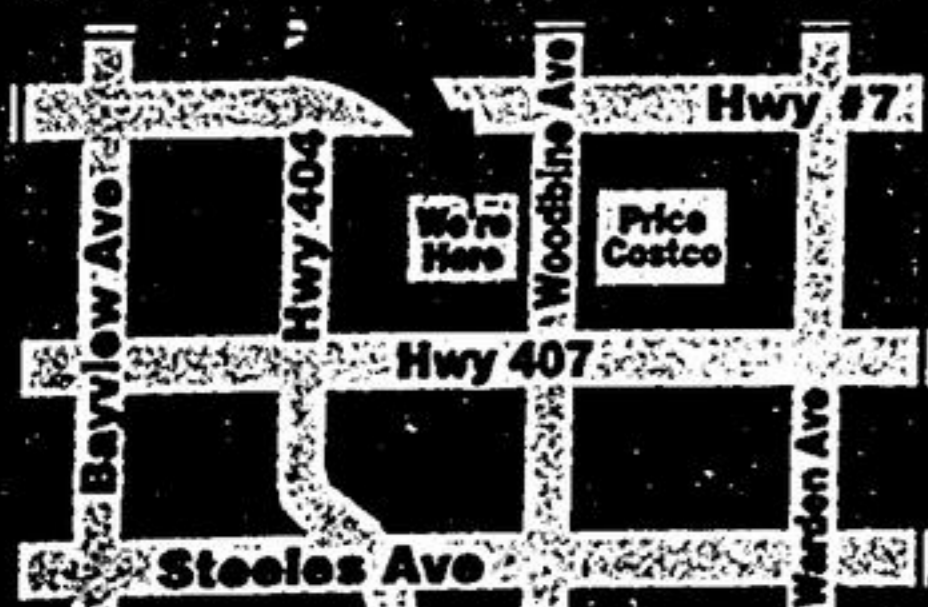
**\$299** /MNTH \$5,000 DOWN

5.7L Hemi V8, 5 spd auto, prem cloth, pwr driver seat, hood scoop, chrome tail pipe, prem running boards with ground effects, 20" chrome wheels, stk # 24-346

48 MONTH LEASE\*

\*Leases based on terms & down payments as shown plus freight, administration, and taxes. \*\*Knockout sales prices include all cash incentives and cannot be combined with special leasing and/or financing rates, plus freight administration, and taxes. Vehicles may not be exactly as illustrated. See dealer for details.

**WOODBINE CHRYSLER**



**905-415-2260**

8280 Woodbine Ave., Markham  
(south of Hwy. #7, west side)  
Across from Costco

www.woodbinechrysler.ca  
sales@woodbinechrysler.ca



**LONGMANS MARKHAM DODGE**

**905-471-1500**

5426 Hwy #7., East, Markham  
(Hwy #7 and Laidlaw)

www.markhamdodge.com  
sales@markhamdodge.com

