

# FASTER THAN A SPEEDING IMPORT.

CAVALIER PACKS MORE STANDARD HORSEPOWER THAN COROLLA, CIVIC AND SENTRA.

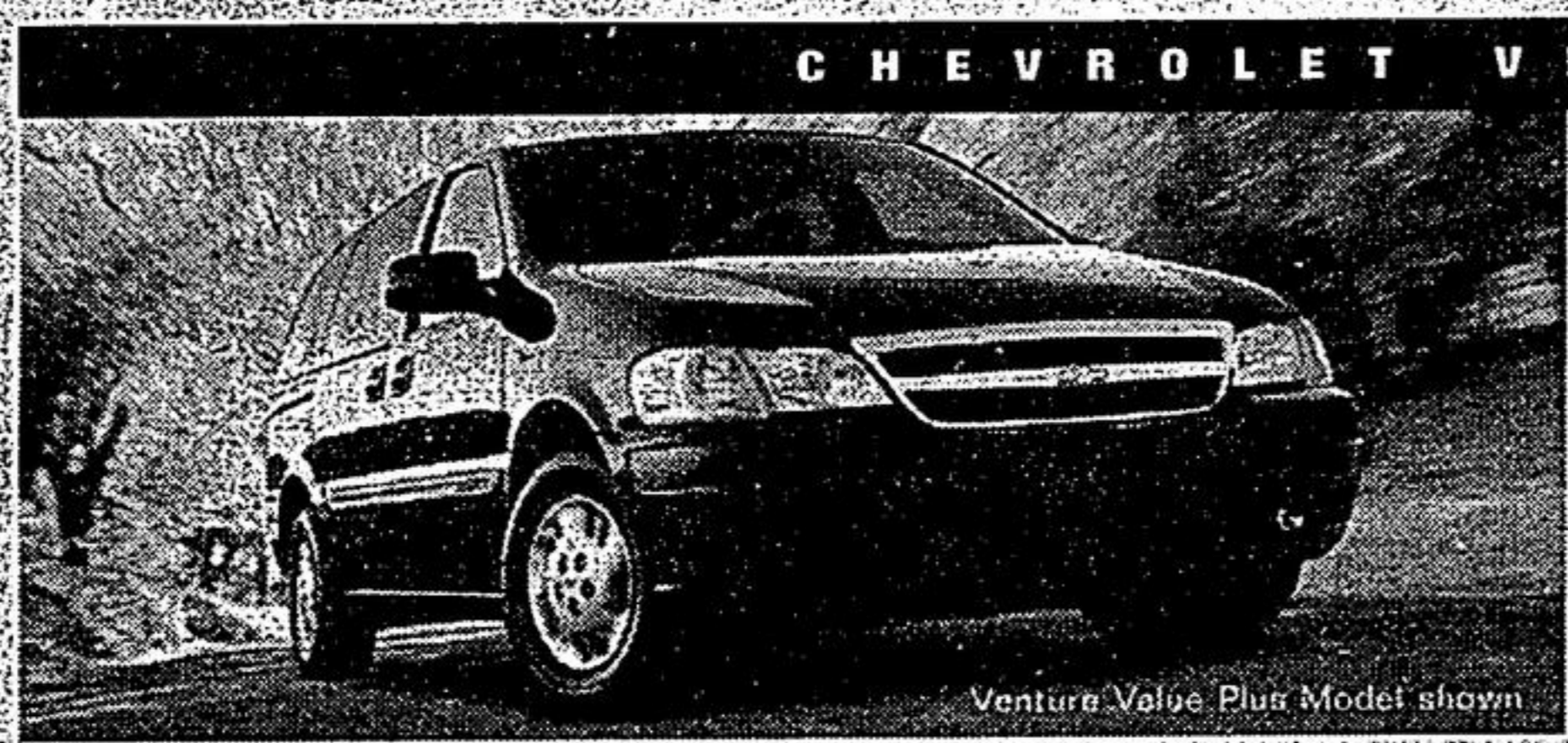


Cavalier VLX Model Shown

**CHEVROLET CAVALIER VL**  
 Air Conditioning & Automatic  
 0%\* purchase financing  
 Or \$12,998\* cash purchase price

**\$178\*** per month  
 SMARTLEASE

Cavalier Sedan VL R7E/Coupe VL R7D • 140-HP ECOTEC Engine • Coupe or Sedan • Air Conditioning • 4-Speed Automatic • 5-Year/100,000 km GM Powertrain Warranty with \$0 Deductible<sup>Δ</sup> • 60/40 Split Folding Rear Seat • Theft Deterrent System



**CHEVROLET VENTURE RWB**

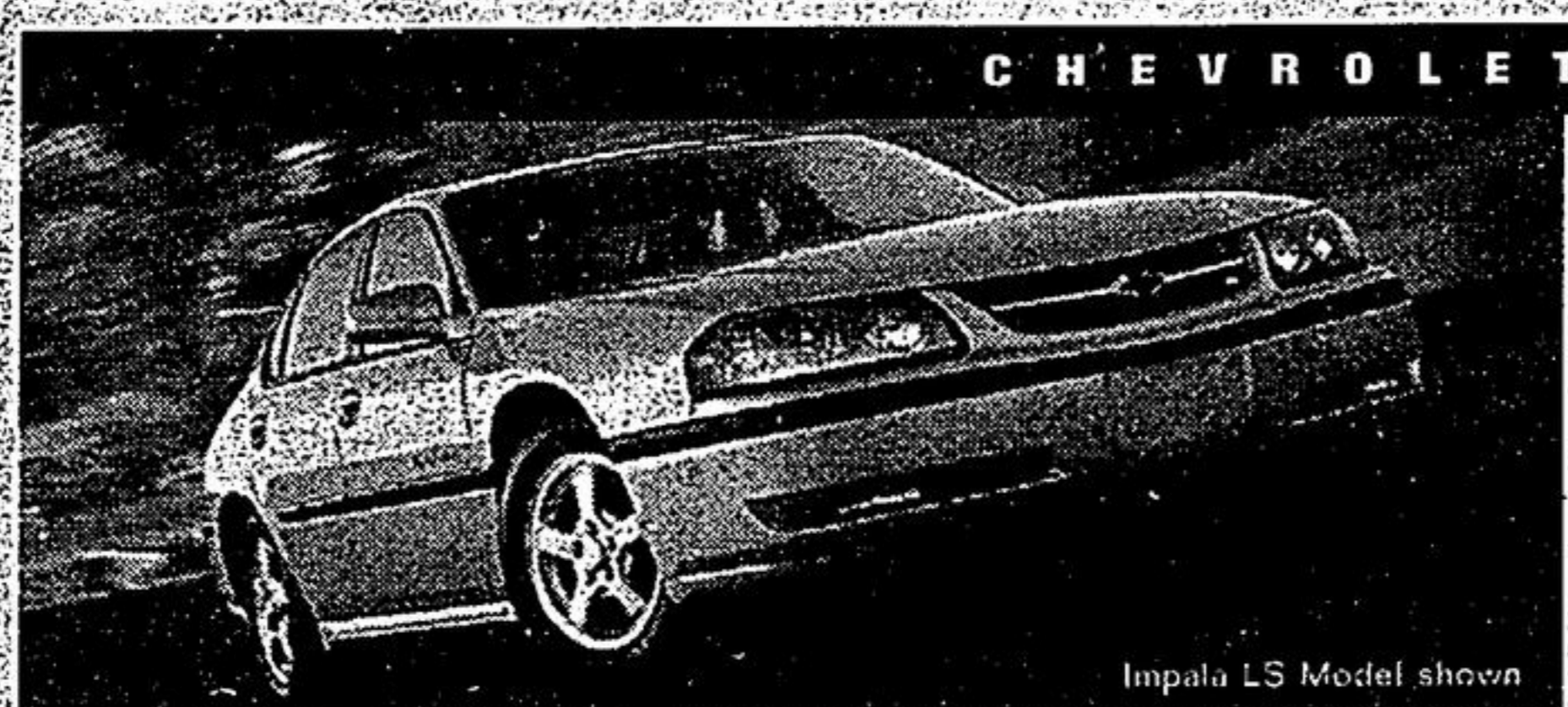
**FIVE STAR SAFETY AND THE BEST FUEL EFFICIENCY IN ITS CLASS.**

**\$178\*** per month Or 0%\* purchase financing or  
 SMARTLEASE \$22,898\* cash purchase price

Venture Value Van RWB R7B • 5-Star safety for the frontal-occupants in the side impact tests • 5-Year/100,000 km GM Powertrain Warranty with \$0 Deductible<sup>Δ</sup> • Integral Child Seat • Air Conditioning • Remote Keyless Entry • CD Stereo

★★★★★  
**FIVE STAR SAFETY RATING**  
 On vehicles equipped with optional air bags, Chevrolet Venture holds a 5-Star rating for the frontal occupants in the side-impact tests.\*

**ENERGUIDE**  
 Most fuel-efficient vehicle in its class five years in a row.



**CHEVROLET IMPALA**

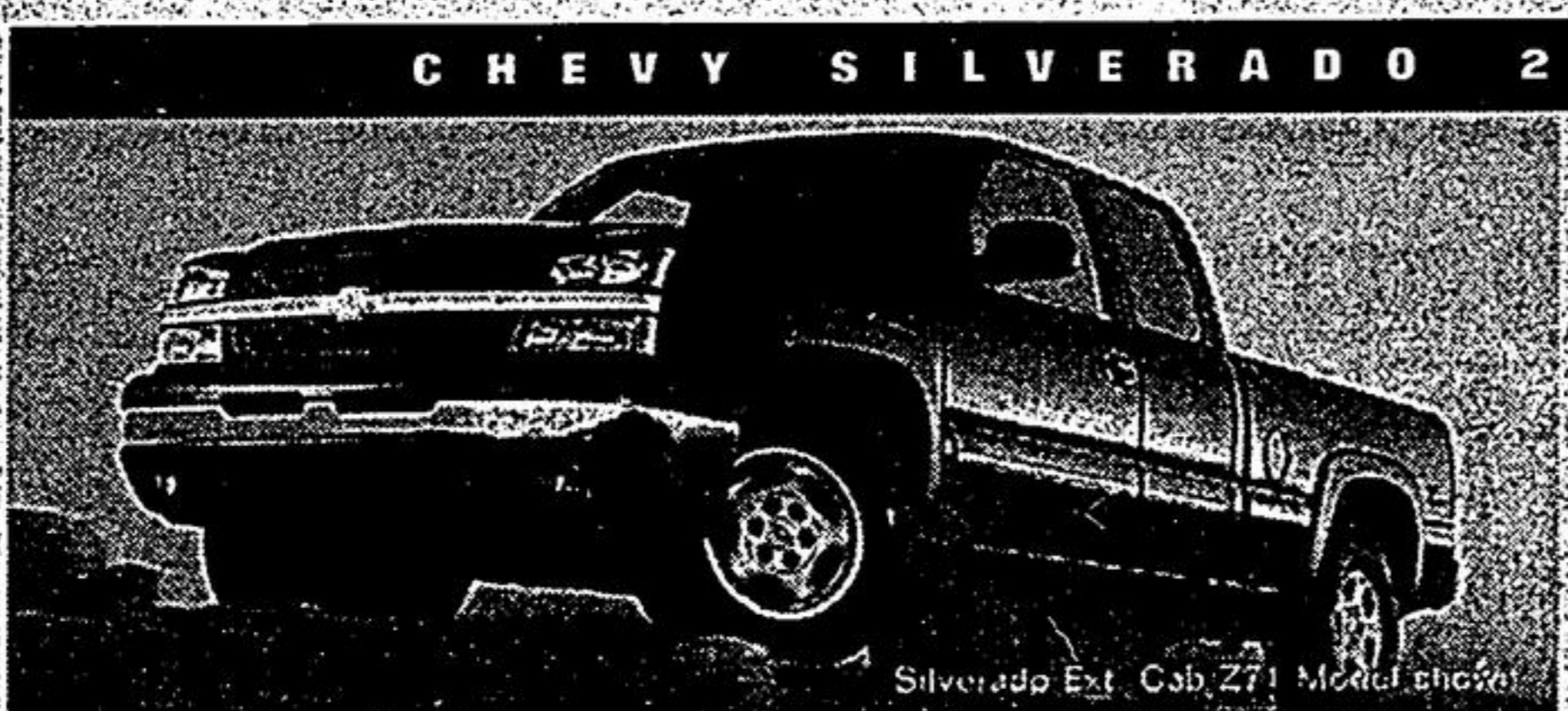
**BUILT AT THE OSHAWA PLANT THAT RECEIVED THE GOLD PLANT QUALITY AWARD – J.D. POWER AND ASSOCIATES**

**\$249\*** per month Or 0%\* purchase financing or  
 SMARTLEASE \$22,598\* cash purchase price

Impala R7A • 3.4L 180-HP V6 Engine • Power Locks/Windows/Mirrors/Trunk • 6-Passenger Seating • CD Stereo • 4-Speed Automatic

★★★★★  
**FIVE STAR SAFETY RATING**  
 Chevrolet Impala holds a 5-Star rating for the frontal occupants in the frontal impact tests.\*

**ENERGUIDE**  
 Most fuel-efficient vehicle in its class.



**CHEVY SILVERADO 2WD EXTENDED CAB**

**CHEVY TRUCKS. THE MOST DEPENDABLE, LONGEST LASTING TRUCKS ON THE ROAD.<sup>†</sup>**

**\$258\*** per month Or 0%\* purchase financing or  
 SMARTLEASE \$28,948\* cash purchase price

Silverado 2WD Extended Cab R7H • 285-HP Vortec 4800 V8 Engine • 4-Speed Automatic with Overdrive • Dual-Zone Air Conditioning • Locking Differential • ABS

**CHEVROLET  FOR ALL LIFE'S ROADS**

**GRADUATE PROGRAM \$1000 OFF**



**For the latest information, visit us at gmcanada.com, drop by your local Chevrolet • Oldsmobile Dealer or call us at 1-800-GM-DRIVE.**  
\*Based on a 48/48/36 month lease. A down payment or trade of \$1,780/\$4,000/\$2,750/\$3,970 (Cavalier VL R7E/Cavalier R7D/Venture RWB R7B/Impala R7A/Silverado 2WD Ext. Cab R7H) is required. Annual cost of borrowing of 1.0%/1.0%/1.5%/0.5% per annum. Option to purchase at lease end is \$6,524/\$9,627/\$10,885/\$18,533 plus applicable taxes. Annual kilometre limit of 20,000 km, \$0.12 per excess kilometre. Other lease options available. †Freight (\$900/\$1,025/\$1,000/\$1,050), licence, insurance, registration, PPSA, administration fees and taxes not included. ‡The SMARTLEASE monthly payment and the GMAC purchase finance rate are not available with and are not calculated on the "Cash Purchase Price" shown. The difference between the price for the SMARTLEASE/GMAC Purchase Financing offer and the "Cash Purchase" offer is deemed under provincial disclosure laws to be a cost of borrowing, whether or not the same represents actual interest, and is required to be expressed as an annual percentage which is 17.44%/7.15%/7.57%/4.12%. †Financing on approved GMAC credit only. Down payment, trade and/or security deposit may be required. Monthly payment and cost of borrowing will vary depending on amount borrowed and down payment/trade. Example: \$10,000 at 0% APR, the monthly payment is \$208.33 for 48 months and excluding Northwestern Ontario). Dealer order or trade may be required. Dealers are free to set individual prices. Limited time offer which may not be combined with other offers. Certain exceptions apply. See your dealer for conditions and details. ‡Testing conducted by the US National Highway Traffic Safety Administration (NHTSA). †Best in class based on Natural Resources Canada 2004 Fuel Consumption Guide Ratings. Chevrolet Venture was awarded this designation in 2000, 2001, 2002, 2003 and 2004. ‡Best in class based on Natural Resources Canada 2004 Fuel Consumption Guide Ratings. †Dependability based on longevity: 1981-July 2002 full-line light-duty truck company registrations. Excludes other GM divisions. ‡Whichever comes first. See dealer for details. \*Graduate Program offer subject to rules and is not to be used in conjunction with \$1,000 GM Student Bonus Offer. †Registered trademark of General Motors Corporation. TD Canada Trust licensed user of mark. Visa International Service Association/TD Canada Trust and GM licensed user of marks. ‡Trade-mark of The Toronto-Dominion Bank.