

Inaugural gala supports dance company, arts committee

An April gala for Motus O will benefit both the avant-garde dance and theatre company and the Culture Art & Heritage Committee for Whitchurch-Stouffville.

The gala is a first for the Stouffville-based company formed in 1990.

Motus O uses extreme movements, acrobatics, outrageous costumes, over-the-top acting and 'outré' props and lighting to create startling and ethereal effects.

The gala takes place April 16 at the Markham Theatre during the company's per-

formances of *A Midsummer Night's Dream*.

Mayor Sue Sherban is co-chairing the event on behalf of the town.

A Midsummer Night's Dream played to sold-out audiences when it debuted at Markham Theatre last fall. It was also seen by more than 3,000 children.

Motus O's artistic directors, James and Cindy Croker and Jack Langenhuizen, have put on seven full-length productions of classics from Alice in Wonderland to Petrouchka since its inception.

They began by putting on plays with students in elementary schools. More than 20 young people have been able to hone their dance, drama and musical theatre

Our Town

with Hannelore Volpe

skills as part of the *Midsummer Night's Dream* performances.

Tickets to the gala are \$75 per person. For more information, call Motus O at 905-640-8647 or email motuso@sprint.ca

March break dance big break for bands

The March break kick-off youth dance is giving local musical groups a chance to shine and the town's young people an opportunity to have a voice.

The dance on March 12 is

the first in a series of youth programs initiated by Mayor Sue Sherban. It's a chance for young people to showcase their talents, she said.

Two local bands, Full Frontal and Retro Break Down, will perform from 8 to 11:30 p.m. at Latham Hall on Park Drive South.

Full Frontal, led by singer and bass guitarist Steven Cliff, plays a wide variety of rock and punk styles. The band was formed last year and includes guitarists Ryan Downie and Adrian Walker with Matt Kennedy on drums.

Retro Break Down features lead singer Mike Warne, who plays bass guitar, keyboardist Brandon Wild, lead guitarist Graziano Volpe and drummer Matt Sartor.

Inspired by groups such as the Beatles, Led Zeppelin and Pink Floyd, the group describes its music as "new age classic rock."

Information on the mayor's youth council will also be available at the dance. The council is seeking young people between 12 and 18 to represent youth interests in the municipality.

Application forms and more information will be available at the dance.

Mrs. Sherban expects the council to be operating in April. Open houses to explore youth concerns were held in Vandorf and Stouffville.

Tickets to the dance are \$5 will be available at the door. Proceeds will go toward business improvement area projects.

642-5111
852-6711
Durham Steam Cleaning
 LOOSE RUGS
 BROADLOOM
 UPHOLSTERY
 3M Scotchguard

The Regional Municipality of York Major Mackenzie Watermains Schedule B Class Environmental Assessment

NOTICE OF STUDY COMMENCEMENT

The Regional Municipality of York is undertaking a Class Environmental Assessment (EA) study to determine the preferred alignment for a new watermain along Major Mackenzie Drive from Pugsley Avenue to Woodbine Avenue. An expansion to the existing water distribution system is necessary to enable The Region to meet future water servicing requirements created by ongoing population and employment growth. The preferred alignment will be determined based on engineering requirements, environmental considerations, public input and information gathered during the study. The Region has retained MacViro Consultants Incorporated to complete the EA study.

The study is being conducted in accordance with the requirements for a Schedule B project as prescribed in the Municipal Engineers Association's *Municipal Class Environmental Assessment* document (June 2000), which requires the following be completed:

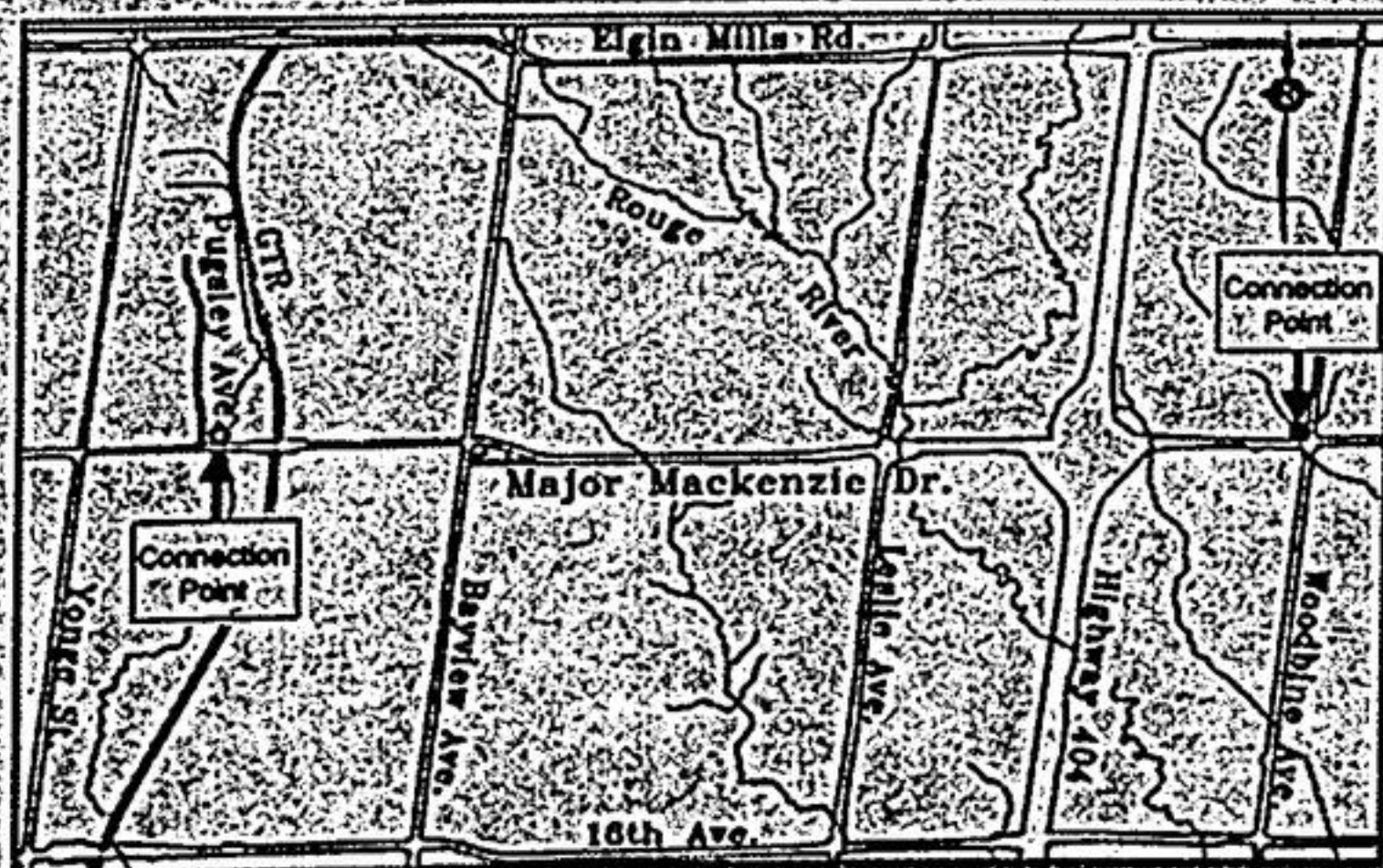
- Definition of the problem;
- Identification and assessment of alternatives; and
- Selection of a preferred alternative.

The study will take place over the next few months with consultation and input from the public and government review agencies.

As part of the consultation process, a mailing list for notification is now being compiled. If you wish to receive an information bulletin describing the study and the assessment process as well as notification of public open house(s), or if you have any questions regarding the study, please contact one of the following project managers:

Mr. Brian Barber, P.Eng.
 Project Manager
 MacViro Consultants Inc.
 90 Allstate Parkway, Suite 600
 Markham, Ontario L3R 6H3
 Phone: (905) 475-7270 Ext. 219
 Fax: (905) 475-5994
 Email: bbarber@macviro.com

Mr. Mike Rabeau
 Project Coordinator
 Infrastructure Design and Construction
 Transportation and Works Department
 The Regional Municipality of York
 17250 Yonge Street,
 Newmarket, Ontario L3Y 6Z1
 Phone: 1-877-464-9675 Ext. 5157
 Fax: (905) 836-4590
 Email: mike.rabeau@region.york.on.ca



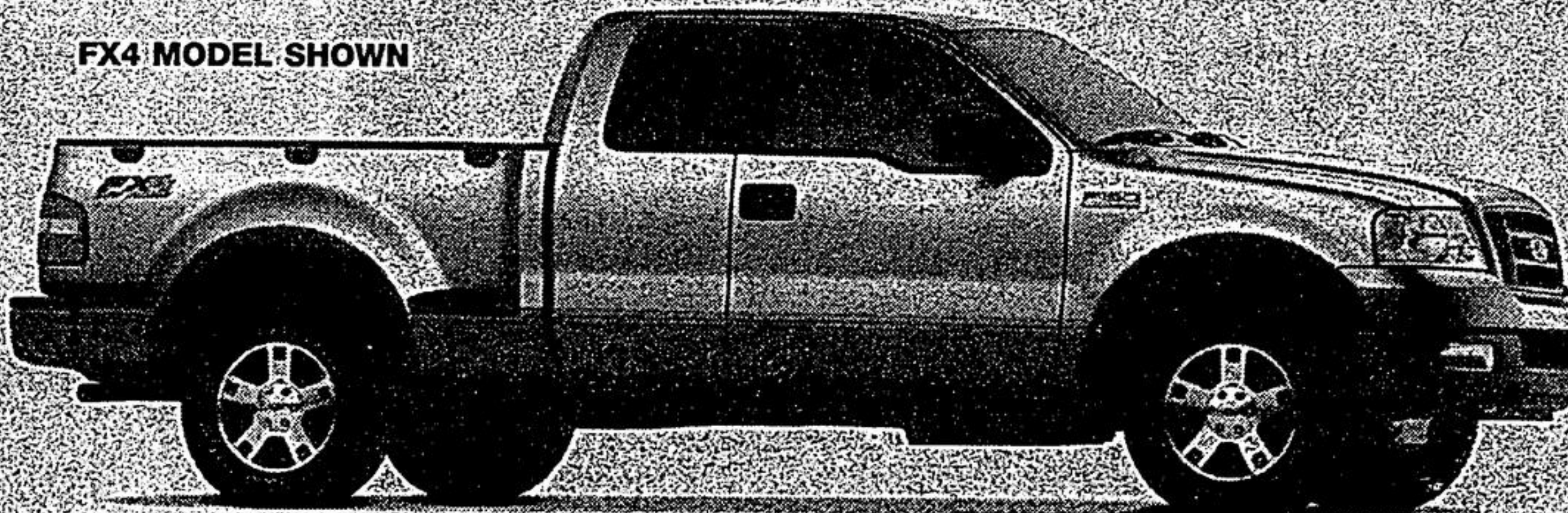
STUDY AREA MAP

Bill Fisch - Regional Chair
 Kees Schipper - Commissioner of Transportation and Works

Thank you for your participation in this study.



RETHINK TRUCK INTRODUCING THE NEW 2004 FORD F-150



FX4 MODEL SHOWN



2004 FORD F-150 XLT 4X2 SUPERCAB

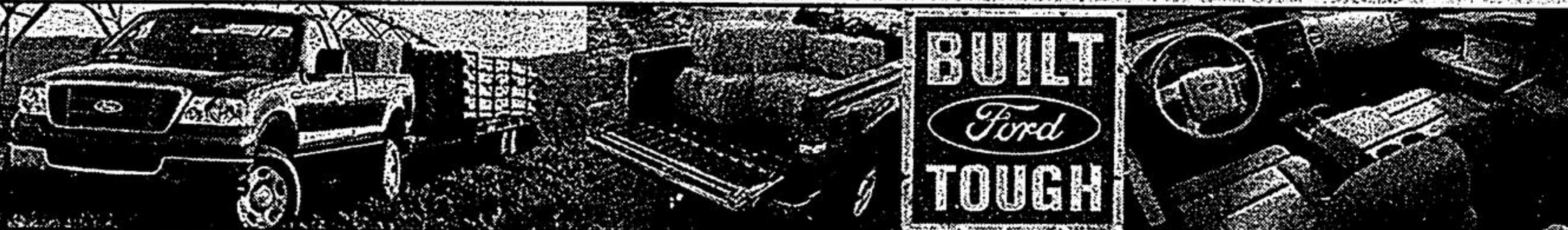
\$399 per month/24 months
 \$4,695 down payment
 \$0 security with the purchase of WearCare®
 \$1,045 freight

FOR ONLY \$32
 more a month get a XLT 4X4 SuperCab

THE ONLY TRUCK GOOD ENOUGH TO BE AN F-150

- 4.6L Triton V8 Engine
- New High-Torque automatic transmission
- New electronic throttle control based on "Fly-by-wire" technology
- New Assist Tailgate makes tailgate feel half its actual weight
- New full boxed frame resists bending and twisting making a smoother ride
- Power rear side windows

WITH AIR CONDITIONING AND AUTOMATIC TRANSMISSION



BEST-IN-CLASS TOWING CAPACITY!

BEST-IN-CLASS PAYLOAD AND CARGO* (WHEN PROPERLY EQUIPPED)

THE ROOMIEST F-150 INTERIOR EVER!

RETHINK VALUE WITH 2004 FORD RANGER

2004 FORD RANGER EDGE 4X2 SUPERCAB WITH AN EDGY NEW LOOK!

\$199 per month/36 months
 \$2,995 down payment
 \$0 security with the purchase of WearCare®
 \$895 freight

OR PURCHASE **\$22,159**



WITH AIR CONDITIONING

- 3.0L V6 Engine • 4-Wheel ABS • Tachometer • 15" Aluminum Wheels • P235/75R15 All-Terrain Tires
- Colour-Keyed Front Bumper, Rear Step and Wheel Lip Mouldings • 60/40 Split-Bench Seat
- SecurLock™ Anti-Theft System • Fog Lamps • AM/FM/CD Player • Plus many more standard features!

ford.ca

Built for life in Ontario

WISE BUYERS READ THE LEGAL COPY: *Lease a new in-stock 2004 F-150 XLT Super Cab 4x2/2004 F-150 XLT Super Cab 4x4/2004 Ranger Edge Super Cab 4x2 with Air for \$399/\$431/\$189 per month based on an annual lease rate of 5.9%/5.9%/2.9% and a 24/24/36 month lease from Ford Credit to qualified retail lessees, on approved credit. Total lease obligation is \$14,271/\$15,039/\$10,158. Some conditions and a mileage restriction of 40,000/60,000 km over 24/36 months apply. A charge of 8 cents per km over mileage restriction applies. Plus applicable taxes. First month's payment and \$4,695/\$2,995 down payment or equivalent trade-in required. \$0 Security Deposit with the purchase of WearCare (up to \$600) on a 24/36 month lease or \$700 on a 48 month lease. WearCare is an excess wear and tear amendment product. It amends the customer's lease wear and tear responsibility. See dealer for details. **Purchase a new in-stock 2004 Ranger Edge Super Cab 4x2 with Air for \$22,159. Taxes payable on full amount of purchase price. All offers exclude freight (\$1,045/\$895), license, insurance, administration fees and all applicable taxes. Down payment may be required based on approved credit. †The 2004 F-150 has the highest available towing capability in its class. Under 8500 F-Series North American Truck Vehicle Integration. Ford F-150 has the highest available payload in its class when properly equipped. Weight Engineering Supervisor, 2004 F-150. The 2004 F-150 has more cargo volume than ever. 2003 F-150 Vehicle Package Superior. Every new F-150 cab is roomier than before. Under 8500 2004 F-150 Package. Some conditions may apply to the Graduate Recognition program. Dealers may sell or lease for less. Limited time offers. Offers may be cancelled at any time without notice. Some conditions apply. Unless specifically stated, all offers are mutually exclusive and cannot be combined. See Dealer for details. Dealer transfer may be required. Not all dealers may have specially equipped models in stock. Ontario FTA, P.O. Box 2000, Oakville, Ontario L6J 5E4