



Vitality

February 28, 2004



Walk or Run Into Spring at Legacy

2004

LEGACY



5KM RUN or WALK at Markham Green C.C.



Please join us **SUNDAY, APRIL 25th** for the **Legacy 5km Run or Walk**. This is a wonderful Event for everyone in the community to get involved and help raise money for the Markham Stouffville Hospital!

Proceeds from the 2004 LEGACY 5KM Run or Walk will go towards Diagnostic Imaging including MRI.

What's New?

Surgical Clinic

Markham Stouffville Hospital's new Surgical Clinic had its grand opening on Thursday, January 26, 2004. The clinic is located in the former courtyard behind Patient Reception.

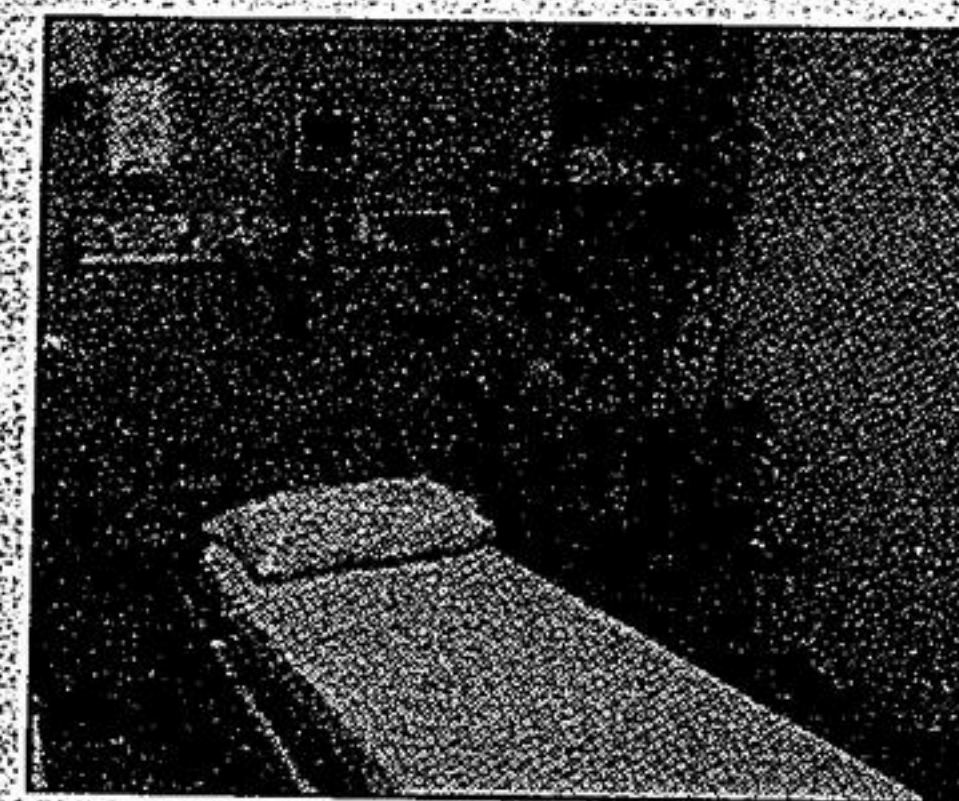
The Plastics Clinic is now located in the new Surgical Clinic. Minor surgical procedures are also performed in the Surgical Clinic and include:

- * Colposcopy
- * Eye laser surgery
- * Minor plastics procedures
- * Minor General surgical procedures
- * Neonatal circumcisions

The Surgical Clinic can be reached at 905-472-7000, ext. 6470.

For Plastics appointments: call 905-472-7353.

fax referrals at 905-472-7376.



Treatment Room

Gala 2004



PRESENTING SPONSOR
THE VILLAGE GROCER
 QUALITY FOODS
PLATINUM SPONSORS
EXCO TECHNOLOGIES LIMITED
SCOTIABANK GROUP

The Gala will take place on **Friday, April 2, 2004** and will be held at the fabulous LeParc in Markham, Ontario. Reception and Silent Auction Bidding will begin at 6:00pm and Dinner will be at 7:30pm. For further information on tickets, sponsorship or auction opportunities, please contact Andrea Guarino, Special Event Coordinator at 905-472-7395.

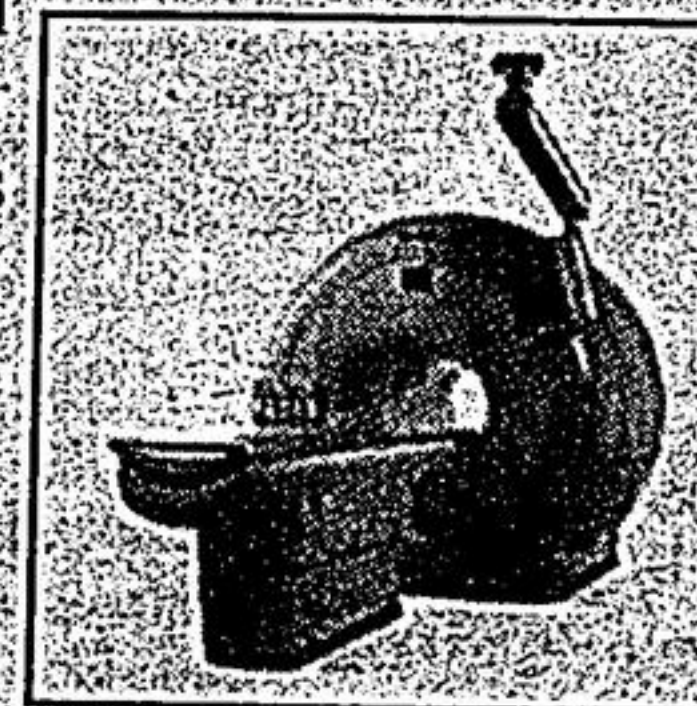
MRI Services Soon at MSH

Magnetic Resonance Imaging (MRI) Services Soon at Markham Stouffville Hospital

We are very excited that residents of Markham and Stouffville will soon be able to receive MRI services closer to home. An MRI is the best diagnostic tool available for many disorders and provides information that is not possible with other diagnostic technologies.

Did you know?

- Images produced by an MRI scan will provide your Specialist with very clear detailed pictures of whatever body part has suspected problems.
- An MRI allows your Specialist to diagnose medical problems inside your body without radiation and surgery.
- The MRI equipment, which can weigh up to 10,000 pounds, uses a very powerful magnet force to generate images, as well as the renovations needed to house it costs \$3.6 million.



Special Care Nursery



Harjit Kalsi (L) and Pradeep Sood (R) of the Indo-Canada Chamber of Commerce visited the Special Care Nursery to deliver a \$2,000 donation from the Indo-Canada Chamber of Commerce. The donation was used to purchase a Neonatal Resuscitation Cart. Rose Cameirao, a nurse in the Special Care Nursery, was on hand to show the new equipment.



Fundraising for the Magnetic Resonance Imaging (MRI) is well underway.

To those of you who have already donated, many thanks. Please make your donation today.

With your help, we can reach our goal of \$3.6 million dollars.

For more information or to donate please contact

Marion Zimmer
 Manager, Corporate and Major Gifts
 Markham Stouffville Hospital Foundation
 905-472-7089
 mzimmer@msh.on.ca