

Medic Alert
 BREAKS FOR YOU
 1-800-668-1507
 www.medicalert.ca

JUNIOR 'A' HOCKEY
 Tonight's Game
Cancelled.
 Look for the Spirit in
 Saturday's Santa Claus Parade
Thursday, Dec. 11, 7:30 pm
vs Aurora Tigers
Stouffville Arena
 www.stouffvillespirit.com

Kids, Santa is waiting for your letters

Santa Claus needs children's Christmas wish lists, soon so he can keep his elves busy.

If you want to make sure Santa sees your list, send it to us before Dec. 19 and we'll make sure he gets it in time.

He loves to read *The Sun-Tribune*, which has a special delivery service straight to the North Pole.

Send your letters and drawings to 9 Heritage Rd., Markham L3P 1M5; e-mail editor Jim Mason at jmason@yrng.com or fax us at 905-294-1538.

Registration
Whitchurch-Stouffville
Soccer Club
 For 2004 outdoor season
 For children born 1999 and earlier

Saturday, December 13, 2003
 at the Stouffville Arena on the Ninth Line
 10am to 2pm
 Register now - prices increase after Dec. 31
 Sponsors, referees and coaches are needed

Plus men's and women's leagues
 For players aged 18 to 55

www.wssc.info
<http://www.wssc.info>
 Email: admin@wssc.info
<mailto:admin@wssc.info>

COMMUNITY CALENDAR

Community non-profit groups in Whitchurch-Stouffville are welcome to place their coming events in this column at no charge. Please send your notice to Community Calendar at the Stouffville Sun-Tribune, Box 154, Stouffville, L4A 7Z5 (fax number 905-640-8778) or drop it off at the office, 34 Civic Ave., 3rd Floor. Deadline is Mondays at 6 p.m. Publication cannot be guaranteed but we will make every effort to ensure it is included. Please be brief.

TODAY

Commerce Christmas: The Whitchurch-Stouffville Chamber of Commerce hosts its annual Bring Your Staff to Christmas Lunch at the Sleepy Hollow Golf and Country Club. Social at 11:30 a.m. and lunch at noon. Cost is \$30 per person for members and \$40 per person for non-members. Call 905-642-4227 for more information.

Christmas store: Stouffville Christian School presents its Christmas Store today and tomorrow from 9 a.m. to 8 p.m. On Saturday, the store is open from 9 a.m. to 1 p.m. The school is at 565 Uxbridge-Pickering Townline. For vendor or other information, call 905-642-4833.

FRIDAY

YDAPA at festival: Stouffville's Festival of Lights is from 6:30 to 8 p.m., featuring the lighting of the Christmas tree in the town square, Stouffville Missionary Church's Living Nativity, the Royal Canadian Legion Colour Guard, performances by the York Durham Academy of the Performing Arts, Elvis impersonator King Creole, local dance studios, schools and many others. Entertainment will be about an hour. The festival is in the town square near Stouffville's Clock Tower. Free hot chocolate, Timbits and cookies.

SATURDAY

Breakfast with Santa: Christ Church Anglican, 254 Sunset Ave. in Stouffville, holds its annual Breakfast with Santa at 9 a.m. Tickets are \$7 per person. Kids three and younger are free. Tickets are available from the church office Tuesday to Friday mornings. Call 905-640-1461.

Santa's coming: The Stouffville Kinsmen Santa Claus Parade starts at 2 p.m. from Cam Fella Boulevard in the east end and proceeds west along Main Street. This year's theme is "A Kids Christmas." There is no fee for non-profit groups entering a float, but businesses are asked to pay \$25 for entries to help defray parade costs. To enter the parade, call 905-640-5004.

Help children: Due to your generosity last year, A & P staff and their families will be collecting new hats, mitts and gloves for the Children's Aid Society at the Santa Claus Parade. Watch for bugles alongside the A & P float.

YDAPA caroling: Members of the York Durham Academy of the Performing Arts are caroling at the Whitchurch-Stouffville Museum's Candlelight Christmas in Vandorf from 6 to 8 p.m. Sample 19th century foods, entertainment and decorations in the

pioneer Log Cabin and Victorian Farmhouse, go on a horse-drawn wagon ride and enjoy hot apple cider, traditional baking and Christmas carols. Advance tickets required. Cost is \$10 for adults and \$7.50 for children. Call the museum at 905-727-8954 or 1-888-290-0337 for reservations.

TUESDAY

Adult skating: New members are welcome to join the Whitchurch-Stouffville Adult Skating Group from 8:55 to 9:45 p.m. at the Stouffville Arena on Ninth Line, north of Main Street. There is a Christmas party after skating Dec. 16.

WEDNESDAY

Bethesda women: The Bethesda Women's Institute meets at 1 p.m. at the home of Doris Ratcliffe for its Christmas meeting and Secret Sister gift exchange.

DEC. 12, 13 AND 14

Christmas peace: "The Missing Peace of Christmas" is being performed at 7 p.m. Dec. 12, 13 and 14 at Springvale Baptist Church, 3885 Stouffville Rd. (at Kennedy Road). Call 905-887-5651 for more information.

DEC. 14

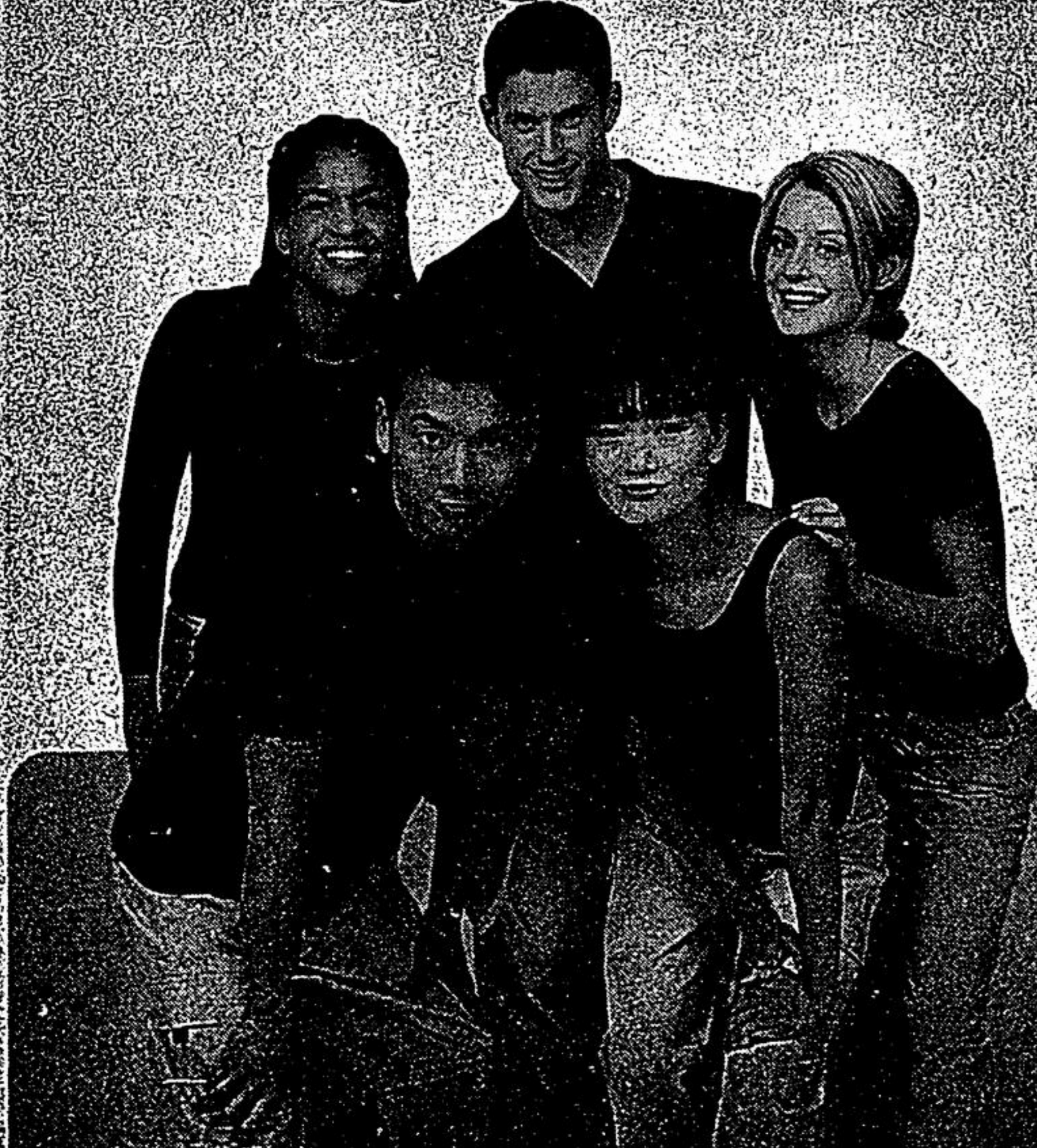
Cathedral Christmas: The annual Christmas Concert in the Cathedral is presented by The York Centre for Children Youth and Families at the Cathedral of the Transfiguration on Woodbine Avenue in Victoria Square. Special guests are Michael Burgess, Jackalyn Short, Quartetto Gelato and the Bach Children's Chorus. General admission tickets are \$30 each. Call 905-887-5896 or 905-773-5303 or evenings 905-294-5230 for more information.

Breakfast with Santa: The Ballantrae Sparks, Brownies and Guides host their annual Breakfast with Santa from 9 to 11:30 a.m. at the Ballantrae Community Centre. Cost is \$3 per person. Proceeds support community events, unit outings and camps.

DEC. 21

Bach to Blues: The Bach to Blues Company presents its fifth annual Christmas concert Home for the Holidays at 7:30 p.m. at Christ Church Anglican, 254 Sunset Blvd. in Stouffville. Tickets (\$10 for adults, \$5 children 12 and younger) are available from Birkett Hassard, Card's Appliances or by calling 905-640-5999. Proceeds support Habitat for Humanity, York Region.

Announcing the York Region Youth **JOB & CAREER** Fairs



Check out the
opportunities...

- summer jobs for students
- employment search assistance
- part time positions
- career training options
- career opportunities for graduates

SOUTH

Tuesday, February 17, 2004
 Premiere Ballroom & Convention Centre
 9019 Leslie Street, Richmond Hill
 10am - 7pm

NORTH

Thursday, February 19, 2004
 Newmarket Community Centre
 200 Doug Duncan Drive, Newmarket
 (East of Main & Timothy Sts.)
 10am - 7pm

Corporate Sponsor:



Youth Magazine

FREE ADMISSION ~ FREE PARKING
We Welcome Class Trips!

Teachers: Please contact Denise Exler to have your class attend - 905-853-8888 ext 264

Presented by:



IS YOUR ORGANIZATION INTERESTED IN PARTICIPATING?

To book your booth, call Denise Exler at 1-800-743-3353 or 905-853-8888 x264
 Email: dexler@yrng.com or www.yorkregion.com