

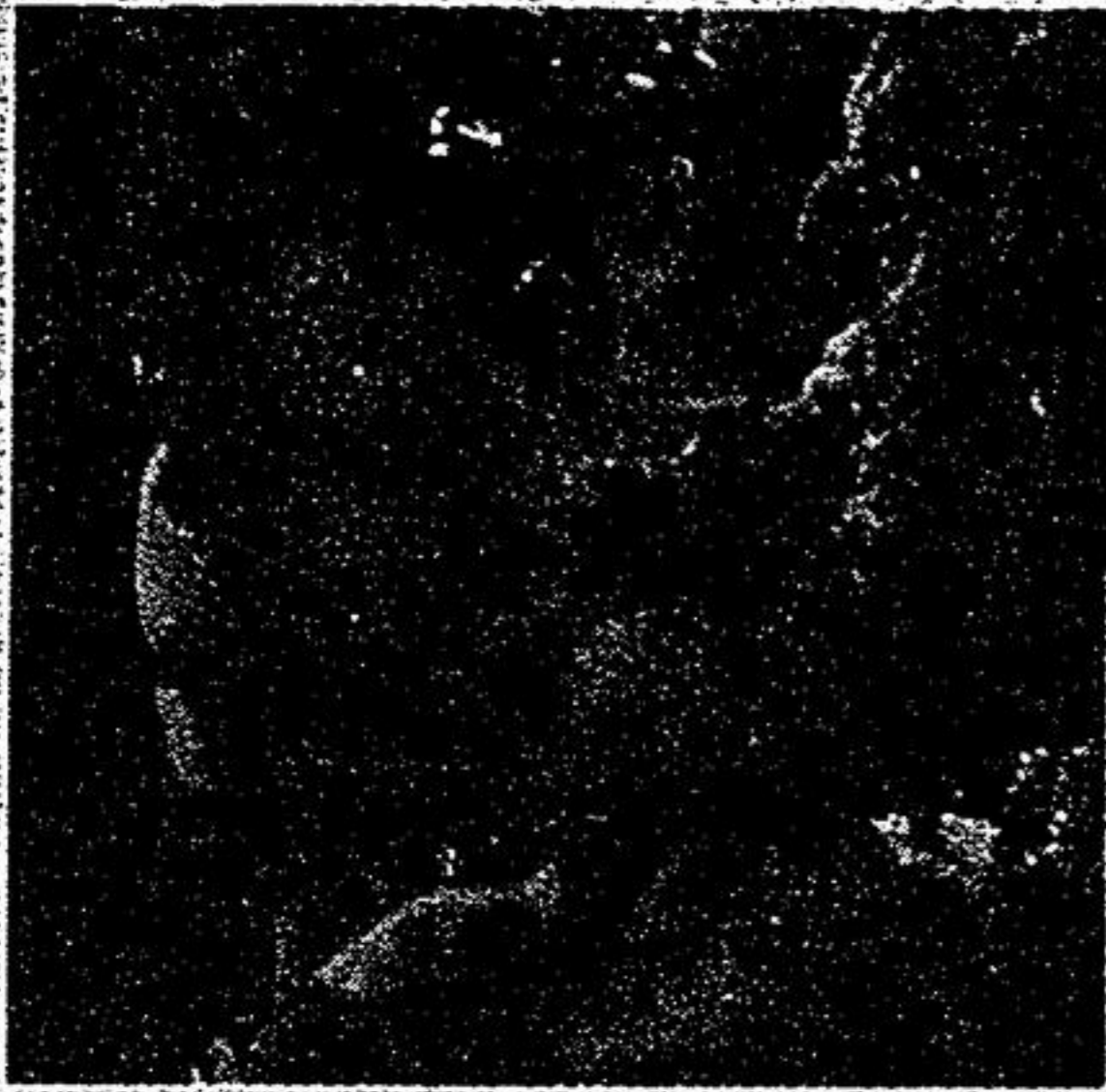


Shopping Extravaganza

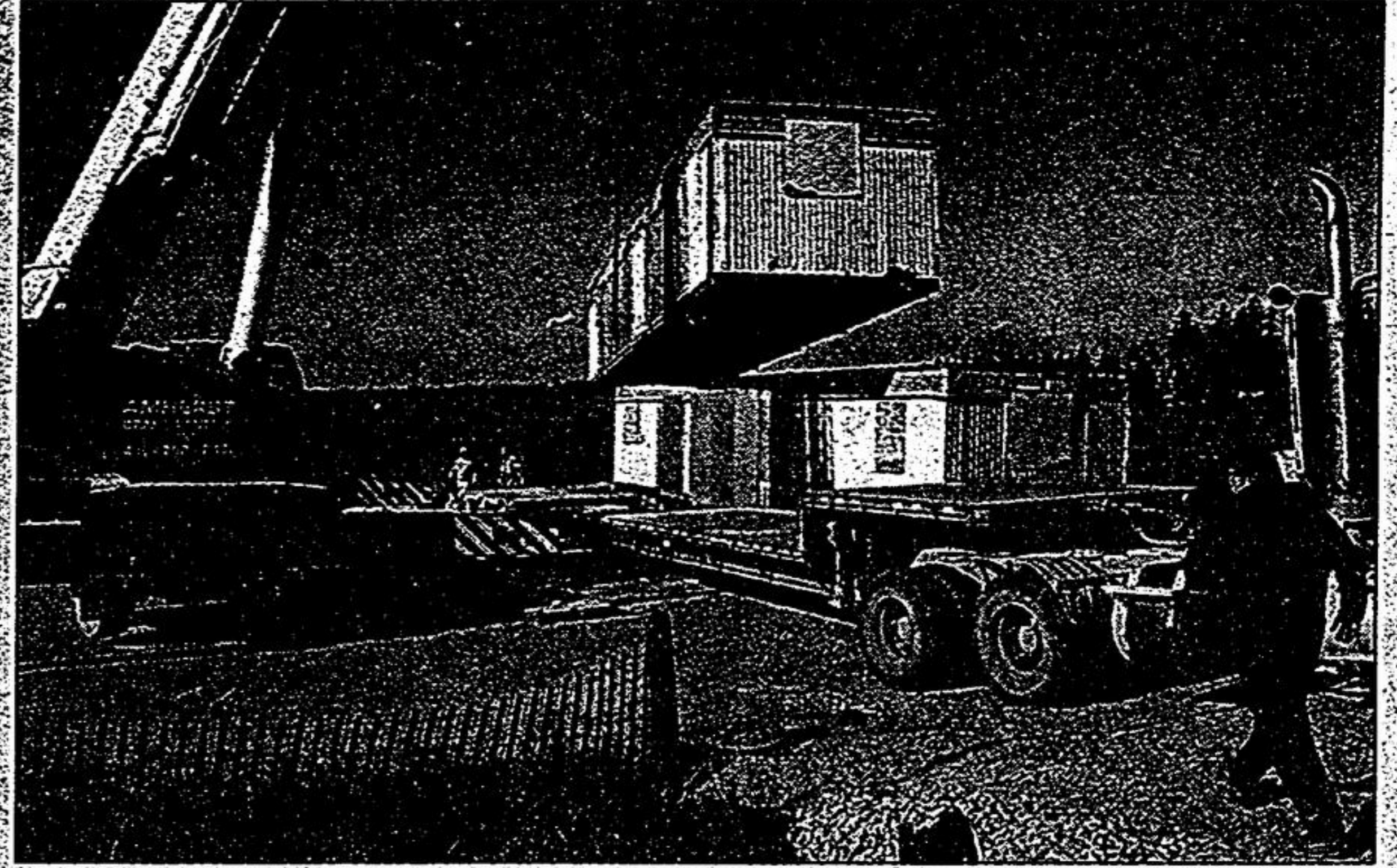


Featuring an exciting array of Christmas gift ideas.

Date: Thursday, November 13, 2003
 Time: 10:00-5:00 p.m.
 Place: Markham Stouffville Hospital
 ■ Auditorium
 ■ Lower level (below Spiral of Sharing)
 ■ The Cornflower Gift Shop



ALL PROCEEDS TO
 MARKHAM STOUFFVILLE HOSPITAL
 COMPLIMENTARY PARKING WITH
 PURCHASE
 PARKING TICKET WILL BE
 VALIDATED IN THE GIFT SHOP



STAFF PHOTO/SJOERD WITTEVEN

A crane lifts the first of two illegal construction trailers on a flatbed truck yesterday from a site on the Tenth Line opposite the Stouffville Country Market.

Developer moves trailers

BY JOAN RANSBERRY
Staff Writer

Two flatbed trucks and a large crane turned up on a Tenth Line property yesterday morning and removed two large trailers just hours before a developer was to be charged with violating a town bylaw.

Town of Whitchurch-Stouffville bylaw officer Linda Mainprize had paperwork completed to charge Hillmount Properties Ltd.

"I told him (the developer) he'd be charged on Friday. The flatbed trucks and the crane turned up early Friday morning," Mrs. Mainprize said.

Charges will not be laid, she said. The trailers showed up on the prop-

erty and footings were put in place during the summer.

The company had been ordered to remove the trailers from the site, located across the road from Stouffville Country Market. The developer had also been told to stop preparing the site for development.

265 HOMES PROPOSED

Hillmount Properties Ltd. wants to build a 265-house subdivision on the land that backs on to Geoffrey and Aspen crescents and Alderwood Street.

Hillmount jumped the gun by hauling the large trailers onto the site, Whitchurch-Stouffville Mayor Wayne Emmerson said earlier. The town has not approved the subdivision.

Re-elect **DAN HORCHIK**
WARD 6 COUNCILLOR

Strong Performance
Full-Time Dedication
Endorsed by Ratepayers
(905) 887-3984

