

# MARKHAM HYUNDAI

## 2003 INVENTORY CLEAROUT WEEKEND

# FINAL CALL

OCT. 23 - OCT. 25  
Thurs - Sat  
3 DAYS ONLY!

### 2003 ELANTRA GL



MSRP FROM  
**\$15,295\*\***

**PURCHASE FINANCING** for

OR **\$0** PAYMENTS FOR ONE YEAR

\*On all 2003 Accent, Elantra and Sonata GL models

or

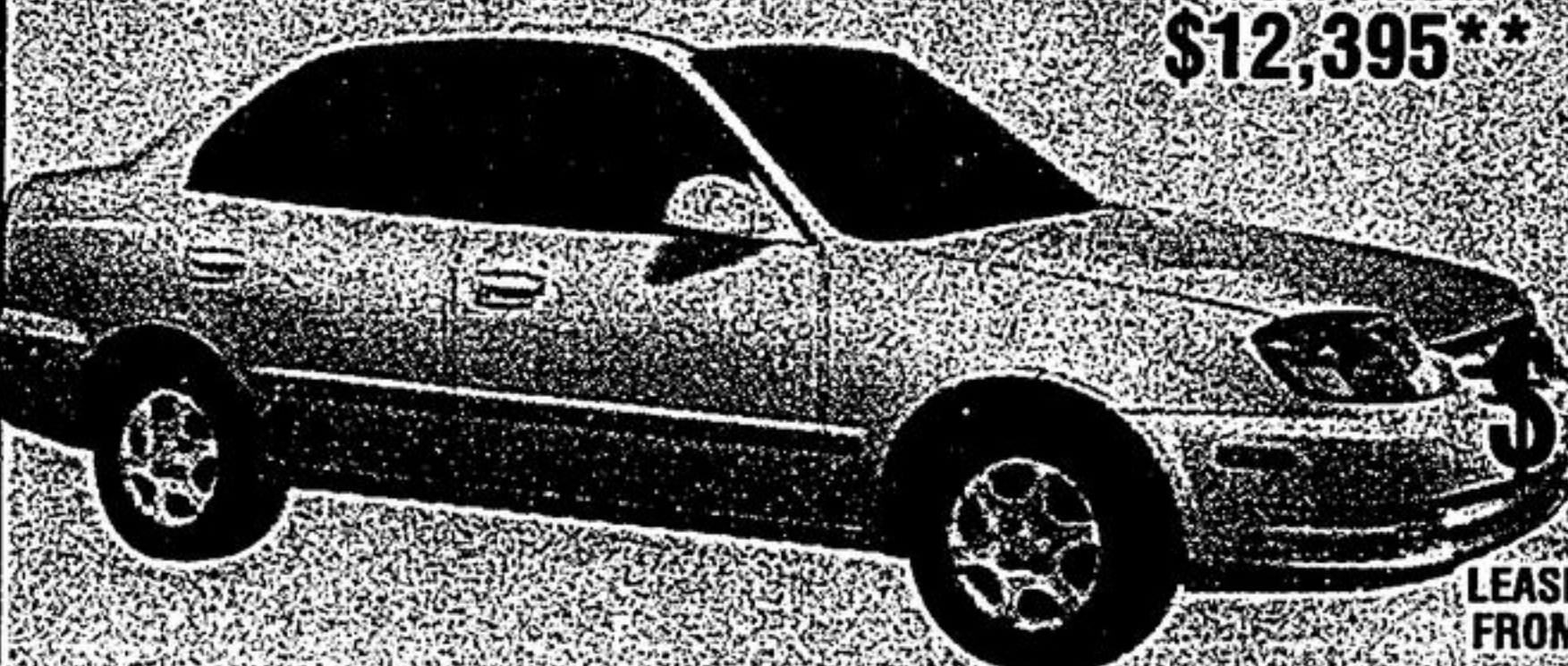
# \$0 \$165

SECURITY DEPOSIT  
FREIGHT & P.D.E.  
INCLUDED

LEASE FROM

**A MONTH / 60 MOS.**  
Down Payment \$2099

### 2003 ACCENT GS



MSRP FROM  
**\$12,395\*\***

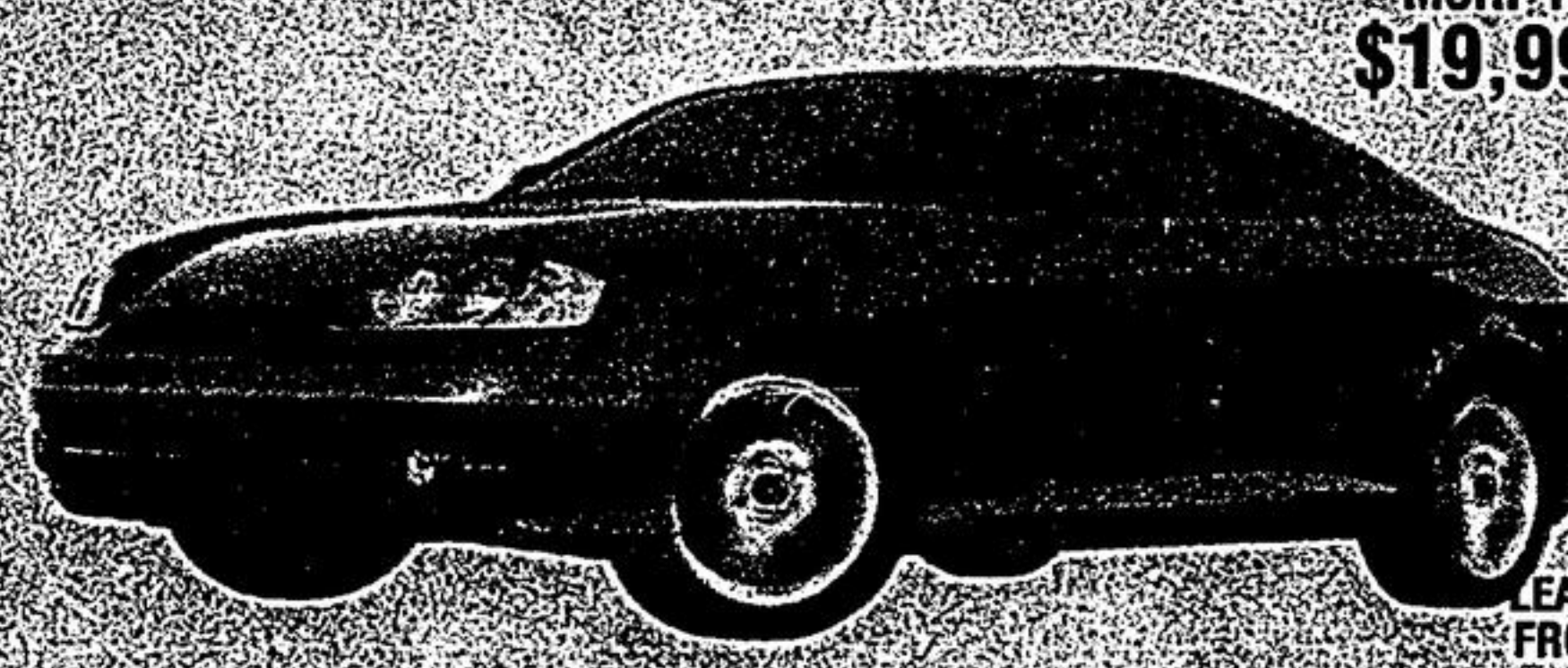
# \$0 \$129

SECURITY DEPOSIT  
FREIGHT & P.D.E.  
INCLUDED

LEASE FROM

**A MONTH / 60 MOS.**  
Down Payment \$1790

### 2003 TIBURON



MSRP FROM  
**\$19,995\*\***

# \$0 \$199

SECURITY DEPOSIT

LEASE FROM

**A MONTH / 60 MOS.**  
Down Payment \$2995

**Top Dollar For Trade-In**

**No Reasonable Offer Refused**

**Cash Rebate Incentive**

## MARKHAM HYUNDAI



4641 HWY #7, MARKHAM  
(at Kennedy)

SALE HOTLINE  
**905-948-0080**

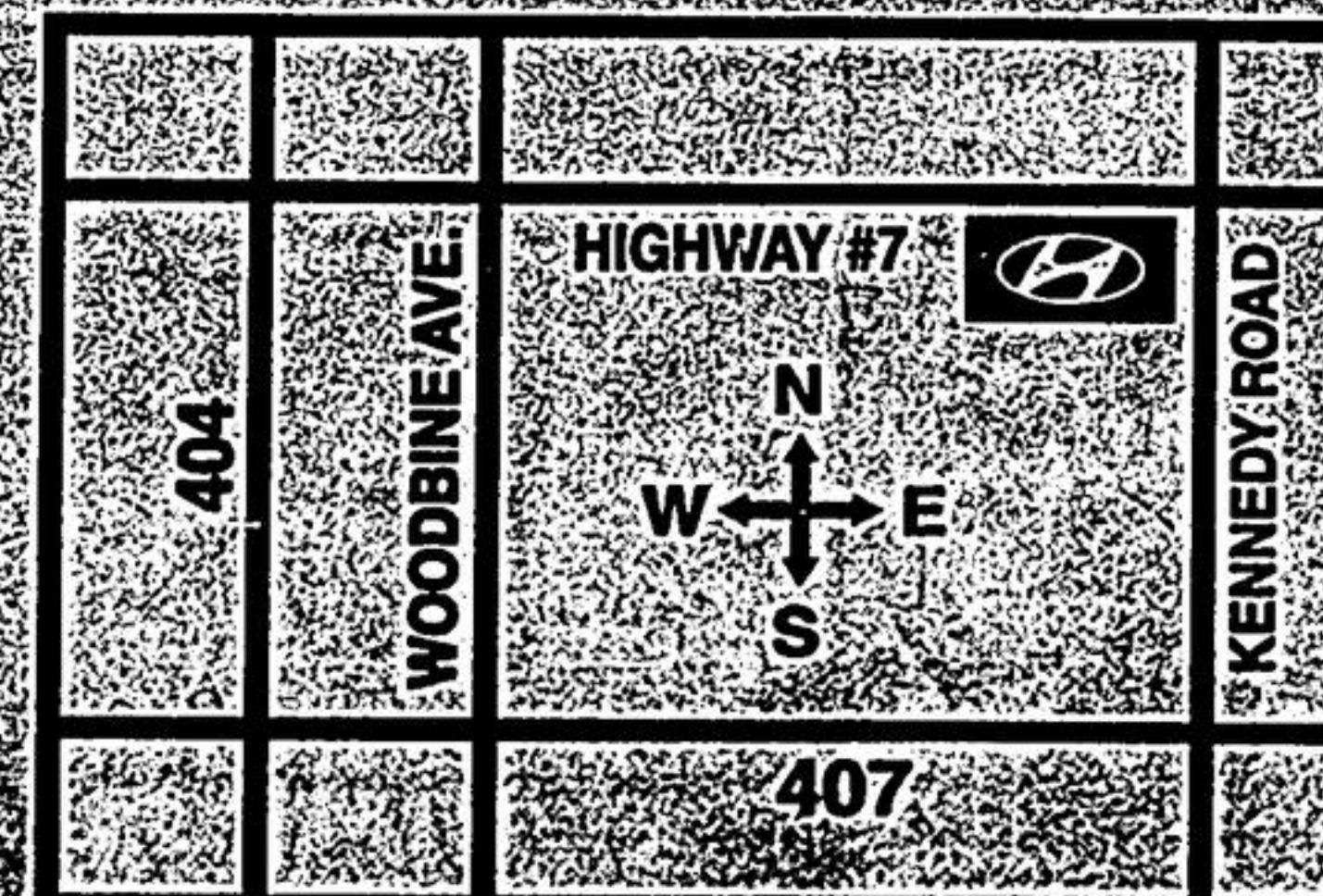
**HYUNDAI**

**5YR / 100,000 KM WARRANTY**

**24HR ROADSIDE ASSISTANCE PROGRAM**

**GRADUATE PROGRAM**

**SHOWROOM HOURS:**  
Monday-Thursday  
9a.m.-9p.m.  
Friday-Saturday  
9a.m.-6p.m.



Leasing Program available from Hyundai Financial Services based on new 2003 Accent GS/Elantra GL/Tiburon and new 2004 Sonata GL/Santa Fe GL 1.4 FWD MSRP from \$12,395/\$15,295/\$19,995/\$22,395/\$22,595, annual interest rate of 0.17%/0.01%/0.95%/4.78%/6.09%, \$129/\$165/\$199/\$239/\$249 per month for a 60/60/60/60/48 month walkaway lease. Total lease obligation of \$9,530/\$12,001/\$14,935/\$16,735/\$15,247 and optional purchase price of \$3,544/\$3,914/\$5,239/\$9,162/\$11,048. Down payment of \$1,790/\$2,099/\$2,995/\$2,995/\$3,295 plus first monthly payment required. \$0 security deposit on all models. Freight and P.D.E. for Accent, Elantra and Tiburon is included. \$1 for Sonata and Santa Fe extra. All applicable taxes, license, and \$350 lease acquisition fee. Dealer may sell for less. 10% purchase financing available on all 2004 Sonata models for up to 36 month terms, up to 60 month terms on all 2003 Accent, Elantra and Tiburon models. Santa Fe GL 1.4 FWD MSRP from \$12,395/\$15,295/\$19,995/\$22,395/\$22,595. All MSRP prices exclude freight, license, P.D.E. and all applicable taxes. Dealer may sell for less. 10% purchase financing available on all 2004 Sonata models for up to 36 month terms, up to 60 month terms on all 2003 Accent, Elantra and Tiburon models. 1.9% purchase financing available up to 36 month terms on all 2004 Santa Fe models. Costs of publication in the Register of Personal and Moveable Real Rights are extra. Financing example: \$10,000 at 0% for 18 months. C.O.B. is \$0.0/\$0.0/\$295.64 for a total obligation of \$10,000.00/\$10,000.00/\$10,295.64. All purchase and lease offers are for a limited time, O.A.C. and may not be combined with any other offer. See Markham Hyundai for details. Sources: A.I.A.M.C. 2001 and 2002. © 2003 AutoPacific, Inc. Vehicle Satisfaction Scores.