

**MARKHAM FAIR 2003**  
**BABY CONTEST**  
 OCT. 2, 3, 4, 5  
**Sat. October 4th, 2003**  
**9 a.m. Entertainment Tent**

**RULES**

1. Must be pre-registered.
2. Babies must be born between July 1st/02 and June 30/03.
3. Babies must be a resident of Markham or Whitchurch-Stouffville.
4. Limited number of entries accepted.
5. Deadline September 27/03.

For information only call Karen Lorenzen, (905) 640-5965

**BABY CONTEST APPLICATION FORM - 2003**

BABY'S NAME \_\_\_\_\_

PARENT'S NAME \_\_\_\_\_

ADDRESS \_\_\_\_\_

PHONE # \_\_\_\_\_

BABY'S DATE OF BIRTH \_\_\_\_\_ SEX \_\_\_\_\_

Please submit your application no later than Sept. 27th/03  
 To: Markham Fair Baby Contest  
 50 Connor Dr., Stouffville, Ont., L4A 7X3

**DEMO DERBY • TRACTOR PULL • CRAFTS • PARI-MUTUEL BETTING**  
**FIDDLE CONTEST • MONSTER MIDWAY • FABULOUS FOOD • HEAVY HORSES**

**ALL SHOWS FREE WITH ADMISSION • FREE PARKING**

## Have your say on York Region tree bylaw

York Region is taking residents questions next week about its new forest protection bylaw. The region's current bylaw protects forests and woodlots larger than a half-acre. It is preparing a new bylaw based on an updated version of the province's Municipal Act. Regional officials host an open house

from 6:30 to 9 p.m. Thursday at Latham Hall on Park Drive in Stouffville. Between 7 and 8 p.m., they will explain their draft bylaw and take questions. Similar sessions are planned Tuesday at Town of Georgina offices on Civic Centre Road and next Wednesday, Sept. 24, in King City. For more information, call 1-877-464-9675.

Find Out Where the **BEST** Jobs are!  
 Join the Richmond Hill/Unionville/Markham  
**Job Finding Club.**  
**AT NO COST TO YOU**

- Learn how to locate those unadvertised jobs
- Create a resume that is results oriented, customized cover letters and practice your interview skills
- Build a strong network
- Have access to business directories with *thousands* of employer contacts
- We will show you winning ways to approach employers
- Unlimited use of computers, Internet, Telephones Fax and Photocopier
- Professional Typing Assistance
- Ongoing one-on-one assistance until you locate employment
- Staff that are dedicated to ensuring that you receive the Best Service.

It's a 2 week Full-time programme.  
 Limited seating available, call now!  
 Coordinated by



**VOCATIONAL PATHWAYS INC.**  
 8920 Woodbine Ave., Suite 402 (N. of Hwy. 7)  
**(905) 731-1200**

This programme is Funded by Canada

## Pen pals wanted

Have you had a pen pal for many years? Have you just started writing to someone and want to share your experience? We are working on a story about pen pals for an upcoming edition. If you want to share your experience, please call Joan Ransberry at 905-642-1908, ext. 222 or e-mail her at jransberry@ymg.com

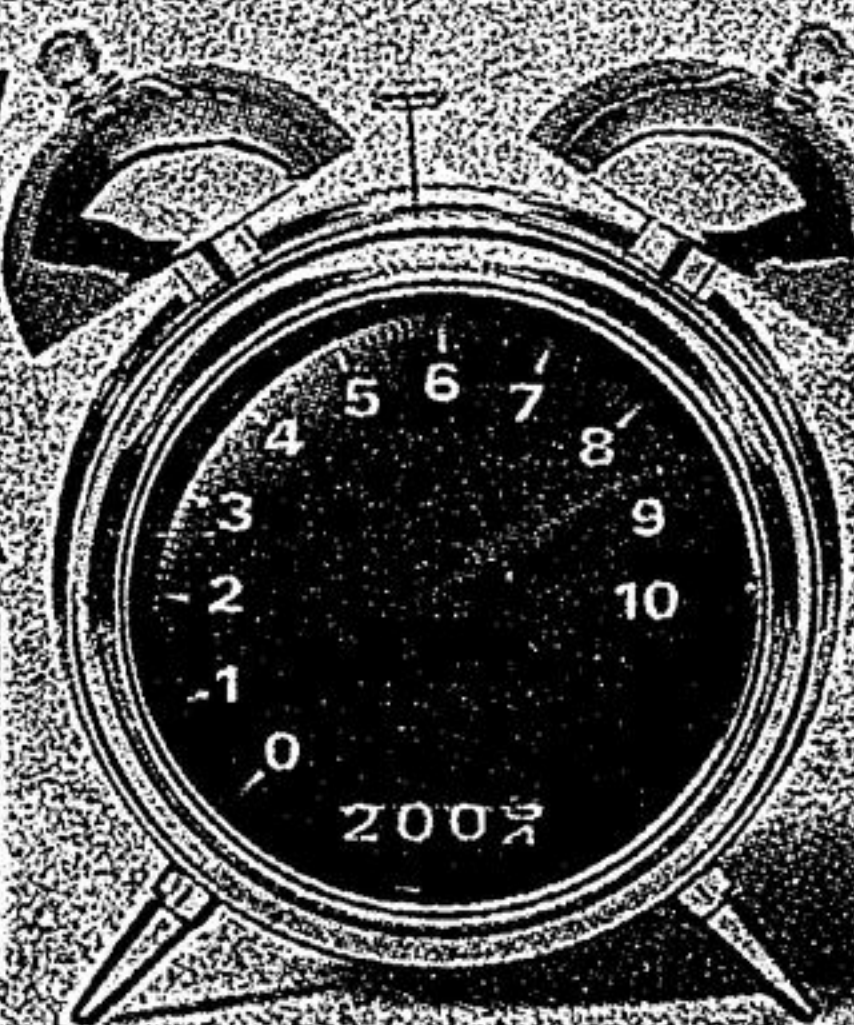
## Thinking about quitting?

CALL THE  
 CANADIAN CANCER SOCIETY'S  
 TOLL FREE  
**SMOKERS' HELPLINE**  
**1-877-513-5333**

This message brought to you as a community service of  
 Economist & Sun/Sun-Tribune

## HONDA'S SUMMER SALES EVENT

# IT'S TIME TO DRIVE A Honda



Purchase financing up to 60 months



**Odyssey EX \$35,200 MSRP\***

- 240-hp, 3.5-Litre, 24-Valve VTEC™ V6 • Front/Rear Air Conditioning • 5-Speed Automatic Transmission • Dual-Stage, Dual-Threshold Front Airbags and Front Side Airbags • AM/FM/CD Audio System with 6-Speakers • Power Door Locks & Windows • Anti-Lock Braking System (ABS) • Retractable 3rd-Row Magic Seat™ • Dual Power Sliding Doors • Automatic Climate Control (front) • HomeLink™ Remote System • Security System with Keyless Remote Entry • Alloy Wheels • Roof Side Rails

Lease it for **\$378** per month for 48 months with \$5,062 down. Freight & P.D.E. included. **3.8%** Lease or Purchase Financing. **\$0** Security Deposit.



All new Honda vehicles are delivered with a full tank.



**CR-V EX \$28,900 MSRP\***

with **5.8%** Purchase Financing

- 160-hp, 2.4-Litre i-VTEC™ Engine • Real Time™ 4-Wheel Drive • 5-Speed Manual Transmission • Air Conditioning with Micron Air-Filtration System • Power Windows, Door Locks and Heated Door Mirrors • AM/FM/6-DISC In-Dash CD Changer/Cassette Audio System with 6 Speakers • Keyless Remote Entry • 4-Wheel Disc Brakes (ABS)



Lease and finance offers are available, on approved credit, only through Honda Canada Finance Inc. until September 30, 2003. Lease payment shown is for 48 months and includes \$1,240 for freight and P.D.E. with 96,000 km allowance (12¢/km exceeding 96,000 km applies). \*Based on a new 2003 Odyssey EX (model RL1863PQ) \$378 per month for 48 months, A.L.R. 3.8% (total lease obligation of \$18,144). Down payment or equivalent trade of \$5,062 required (zero down payment plans available), plus first monthly payment. Option to purchase at lease end for \$16,896 plus taxes. \*MSRP does not include freight and P.D.E. (\$1,240). #3.8%/5.8% conventional financing is available on all new 2003 Odyssey/CR-V for 24/36/48 or 60 month terms. Financing example: \$20,000 at 3.8%/5.8% per annum equals \$366.53/\$384.80 per month for 60 months. C.O.B. is \$1,991.80/\$3,088.00 for a total obligation of \$21,991.80/\$23,088.00. Down payment may be required. //Taxes, licence, insurance, registration and maintenance fees are additional. Dealer may sell/lease for less. 1 See Car and Driver magazine, July 2002. 11 Crash tests by NHTSA are based on a 2003 Odyssey/CR-V for front and side impacts. For more details visit www.nhtsa.com. See your neighbourhood Ontario Honda dealer for details.



**HONDA**

**hondaontario.com OR 1-888-9-HONDA-9**

