

NICHE DECOR

LAST WEEK

FLOOR MODEL SALE

ALL SOFAS & CHAIRS GREATLY REDUCED SALE ENDS SEPT 1'03

INTERIOR FURNISHINGS AND DESIGN SERVICES
 147A MAIN STREET, UNIONVILLE (905) 479-8385

Pliakes wants youth centre, call-in help for families

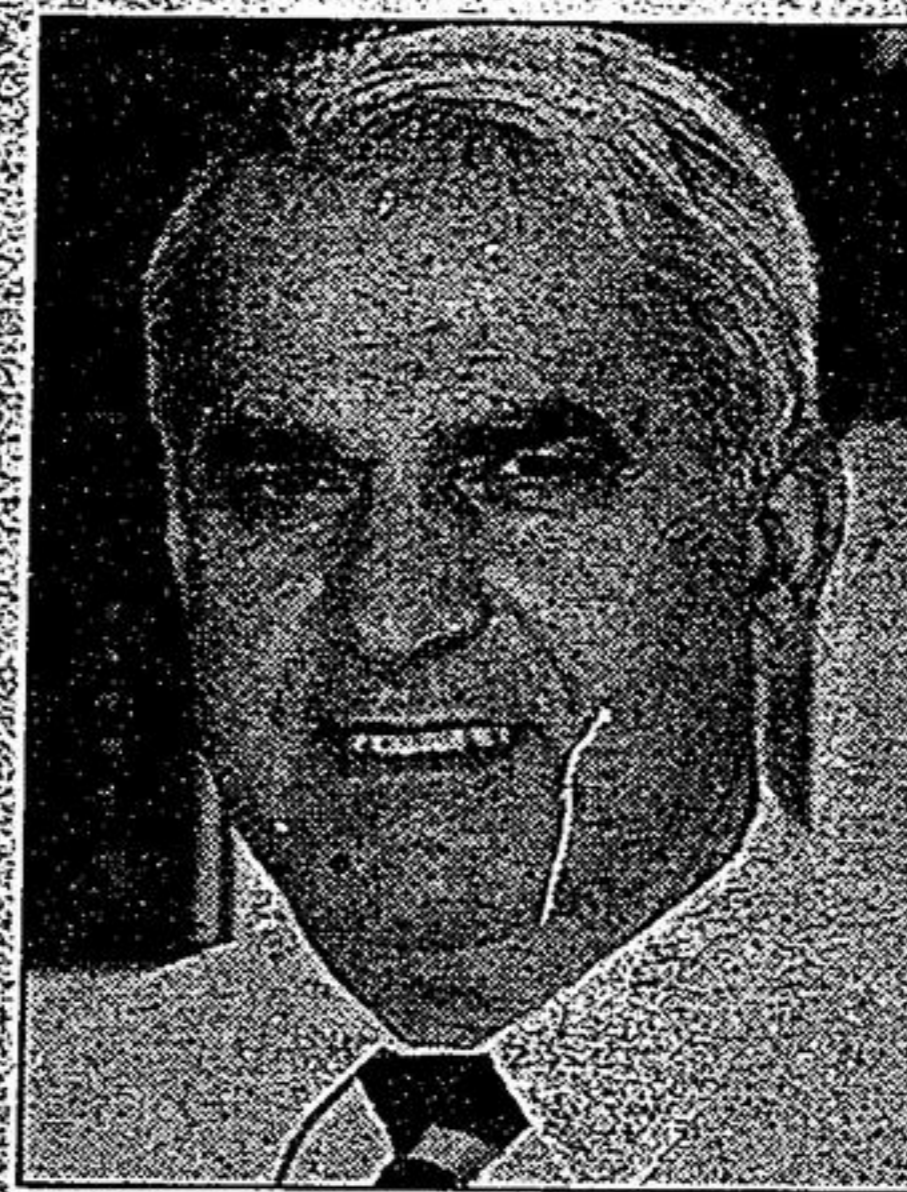
From page 1

got 500 acres of vacant employment land spread throughout Whitchurch-Stouffville. There's no reason why we can't have a 'no vacancy' sign posted in our municipality (once that land is developed)," he said.

Business has to pay its own way and not ride on the backs of the residential taxpayers, Mr. Pliakes said. Some taxpayers live on low and fixed incomes and can hardly make ends meet, he pointed out.

I come to this campaign with a business background, a passion for the challenges associated with operating a business and the ability to do the job right.

"If ever we needed a leader with business know-how, it's now," said Mr. Pliakes. "I come to this campaign with a business background, a passion for



STEVE PLIAKES: Town needs a "leader with business know-how" for next term of council.

the challenges associated with operating a business and the ability to do the job right.

"I also know the benefits of diversity. I know why we can't put all our eggs in one basket."

"Let's be a town that diversifies, diversifies and then diversifies some more. Let's have a mayor who knows how and why to do the job."

He talked about the importance of keeping teenagers off the street and out of trouble by providing a youth centre, launching an adopt-a-park program and offering families a

call-in centre to get help keeping children on the right track.

"It does take a community to raise a child," said Mr. Pliakes.

A youth centre established at the Stouffville Arena in the late 1990s closed due to poor attendance.

Mr. Pliakes is a strong advocate of more policing within the boundaries of the municipality.

"Kids won't smash windows, set fires, damage the town's gazebo, destroy trees and slash tires if they know a cop or two is nearby," he said in reference to recent incidents.

Mr. Pliakes and his wife, Lilly, have lived in northern Whitchurch-Stouffville for 30 years. They have two married daughters and four grandchildren.

"I came to Canada from Macedonia in 1952," he said. "I am a proud Canadian, I love Canada and I especially love my home in Whitchurch-Stouffville. I know this municipality. It's wonderful, diversified and an exciting place."

Representing Ward 1 in northwest Whitchurch-Stouffville, Mr. Pliakes has served on council for two consecutive terms.

VISA MASTERCARD AMERICAN EXPRESS
COOL CASH **COLD CASH**
 ALL PRICES CASH & CARRY
 DELIVERY AVAILABLE

SHELL BUILDING CENTRES

80 YEARS SERVING YOUR COOL COMMUNITIES

BACK TO COOL SALE!

COOL STOUFFVILLE
 33 Edward Street
 905-640-3440 Fax 905-640-7671
COOL SUTTON
 20971 DALTON ROAD
 905-722-6561 Fax 905-722-9919

COOL - COLD - CONCRETE		COOL LOOKING ROOF		COOL BASEMENT	
Concrete mix 30kg	3.50/bag	20yr Asphalt Shingle	14.75 bu	12' Main Tee	5.10 ea
Mortar mix 30kg	3.99/bag	25yr Asphalt Shingle	15.95 bu	10' Wall Mould	2.25 ea
Sand mix 30kg	3.99/bag	15lb Asphalt Felt	20.60 ea	4' Cross Tee	1.35 ea
6"x8" sonotube	5.60 ea	25yr Renaissance	22.40 bu	2' Cross Tee	.68 ea
8"x8" sonotube	7.80 ea	30yr Chateau	22.40 bu	2'x4' Chablis Ceiling Tile	3.95 ea
Dek block	5.49 ea	35yr Well Built Installer	"Priceless"	2'x4' Sonoflex Ceiling Tile	3.98 ea
BACK TO COOLING THE HOUSE SALE		WE ARE COOL IN BACK TO TOOLS, FINE IN PINE, A NUMBER IN LUMBER, SLIM WITH THE PRICE OF TRIM, POPULAR WITH POPLAR		COOL DOORS	
R12-15' Fibreglass (88 ft ²)	22.75 ea			2'0" #80 - Colonial	42.95
R20-15' Fibreglass (49 ft ²)	21.45 ea			2'4" #80 - Colonial	44.30
1"x2'x8' Styrofoam	9.75 ea			2'6" #80 - Colonial	45.50
1 1/2"x2'x8' Styrofoam	14.60 ea			2'8" #80 - Colonial	47.20
2"x2'x8' Styrofoam	19.45 ea			2'0" #800 - Colonial Fast Fit	62.95
8'x500 Ultraplus poly	20.80 ea			2'4" #800 - Colonial Fast Fit	65.95
10'x1000 Ultraplus poly	41.20 ea			2'6" #800 - Colonial Fast Fit	67.95
8'x1500 Ultraplus poly	61.90 ea			2'8" #800 - Colonial Fast Fit	69.50

OSTAGO VINYLCLAD WHITE PATIO DOORS
COOL DEALS
 5' ~ \$475.00
 6' ~ \$495.00

PRICES COOL UNTIL SUNDAY SEPTEMBER 14th, 2003
In the event of a printing error please refer to posted prices in Cool store.

HOURS OF COOL STORE OPENINGS:
STOUFFVILLE: MON-THURS: 7:00am-6:00pm, FRI: 7:00am-8:00pm, SAT: 8:00am-5:00pm, SUN: CLOSED
SUTTON: MON-THURS: 7:30am-6:00pm, FRI: 7:30am-7:00pm, SAT: 8:00am-5:00pm, SUN: 10:00am-4:00pm