

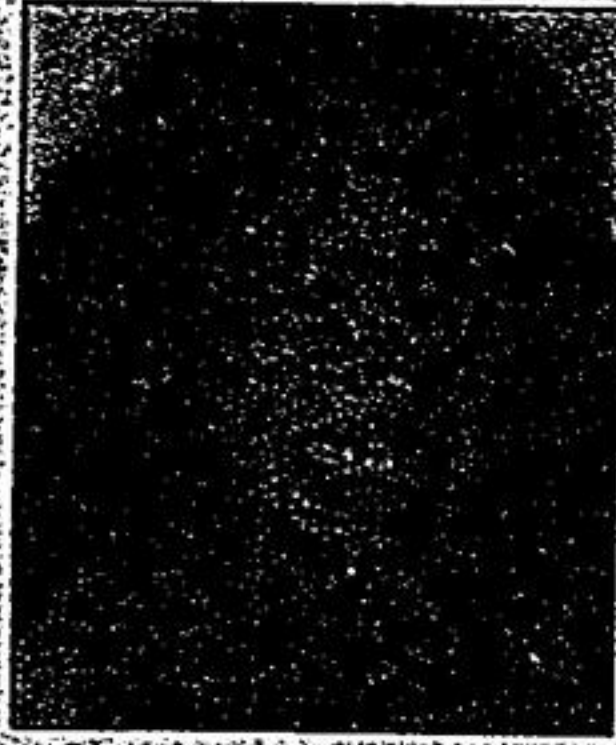
Stouffville Says

By Joan Ransberry

What do you expect on your first day of junior kindergarten?

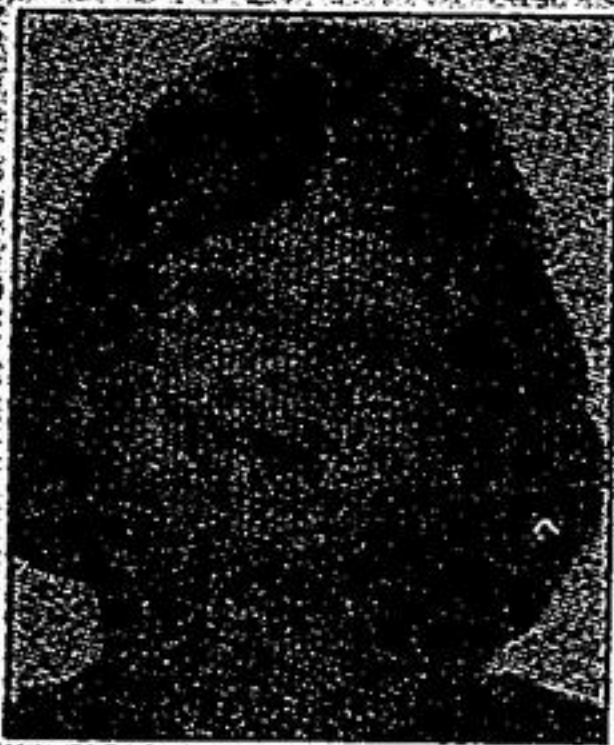
— Asked at My First School in Stouffville

Nikki DIDONE, 3



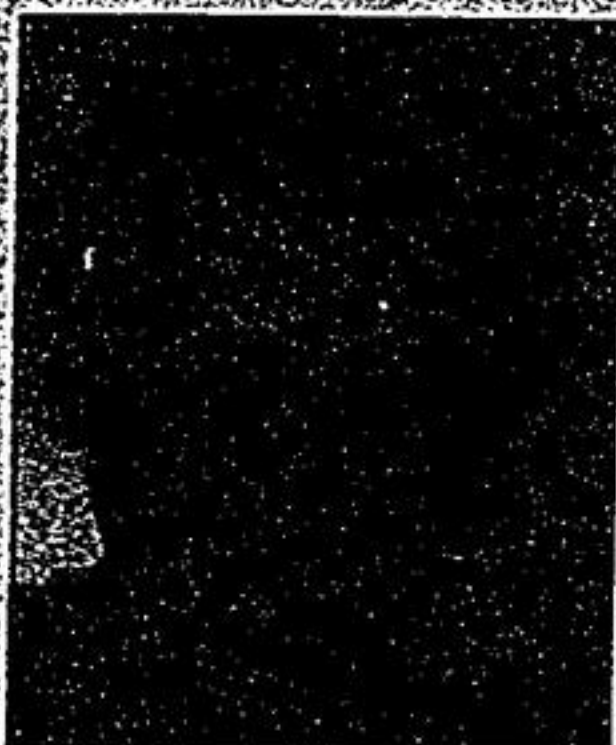
"I'm taking my mermaid in my knapsack to the first day of school and I'll get to see Charlie and Ben. They're my brothers."

Alanna DAVIS, 4



"I'll be taking bananas and oranges to share with Nikki on my first day at the new school."

William BATTLE, 3

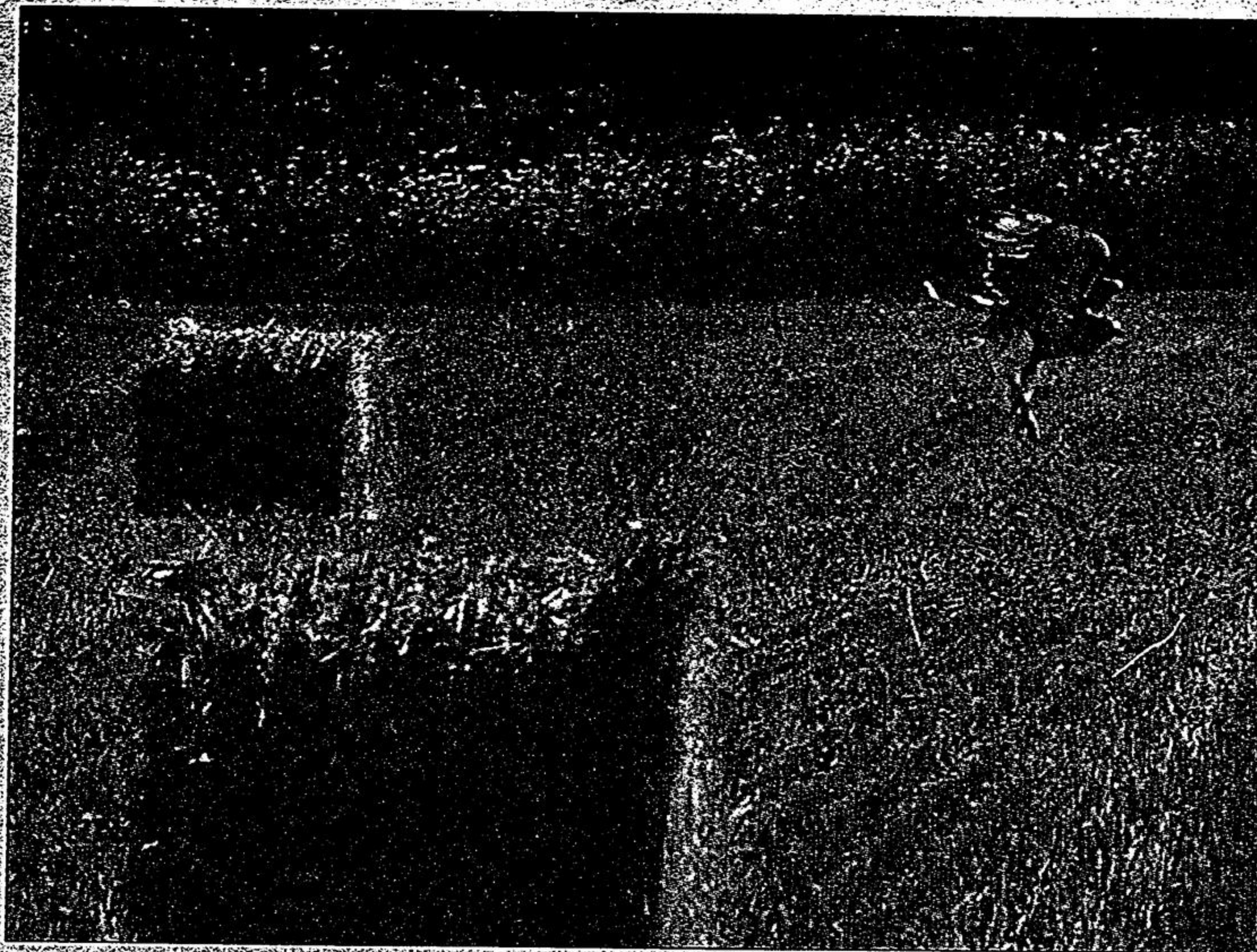


"I'll make new friends and I'll get to play once my mommy takes me to school."

Hailey VANDERBURGT, 4



"I'm going to read a lot of big words at the big school. There won't be any little words at the big school."



STAFF PHOTO/SJOERD WITTEVEEN

Cleared for takeoff

A red-tailed hawk takes off from a bale of straw in a field along McCowan Road last Thursday.

Town taking legal action against 10th Line developer

BY JOAN RANSBERRY
Staff Writer

A developer and the Town of Whitchurch-Stouffville may square off in court if work on a parcel of land on the 10th Line doesn't stop.

Mayor Wayne Emmerson has confirmed court action is possible if a numbered Ontario company doesn't stop site readiness work on lands directly across from the Stouffville Country Market.

"After getting numerous calls from area residents, we started legal proceedings against this developer. It's a numbered company, a consortium group," Mayor Wayne Emmerson said.

Suspensions were raised two weeks ago when two large construction trailers showed up on the property. Meanwhile, it appears as if some footings are being put in place in readiness for the 265-house subdivision.

"I've had enough," Mr. Emmerson said. "I want to know what the developer thinks he's doing on this land. They don't have permission to do

anything like this.

"They need a site control agreement. They don't have a site control agreement. This is rural land. This is very disappointing. The nearby residents are upset. I am upset. Look at these trailers. They're so close to the homes to the south (on Geoffrey Crescent). What must the people think?"

"They don't have a site control agreement."

"This is rural land. This is very disappointing."

"The nearby residents are upset. I am upset."

"Ironically, a month ago, the developer filed an appeal with the Ontario Municipal Board, objecting to plans for six other subdivisions in Whitchurch-Stouffville.

"He's appealing the plans for the other developments," said

the mayor. "But the other developers didn't do this type of thing and yet they're making an appeal to the OMB and trying to hold the others up."

Town council has given the green light for five of the six developments to be made up of about 3,500 homes.

Since construction on the housing developments was not expected to begin until the Big Pipe sewer extension project reaches Whitchurch-Stouffville next spring, the OMB hearings are not expected to delay development if the OMB determines they can, in fact, proceed as planned. Tom Parry, director of Planning for Whitchurch-Stouffville Development Services, said earlier this month.

All six appeals, including the one submitted by the consortium group, are expected to be handled at the same time, Mr. Parry added.

Representatives of the numbered Ontario company did not return the Sun-Tribune's calls.

Briefly

Miniature railway takes on riders

It's one of the smallest railways in Canada and one of Whitchurch-Stouffville's hidden treasures.

The Richmond Hill Live Steamers operate miniature steam and diesel engines at its track near Ballantrae. Some of the trains are large enough to ride on.

The facility is open to the public two weekends a year. The last open house of this year is Sept. 6 and 7 from 10:30 a.m. to 4 p.m. each day.

The track is at 15922 McCowan Road, just north of Aurora Road.

Donations are accepted. Snacks are available.

The 40 club members are from communities across the GTA.

For more information call 416-261-9789 or 905-841-6059.

Get your motors running for lawnmower races

Registration forms for the Stouffville's first ever Lawnmower Race are available at Schell Lumber and Stomark Rental.

Sponsored by the Kinsmen Club of Stouffville, the races are Saturday, Sept. 27 in Memorial Park.

Entry fee for racing mowers is \$50. There is a \$25 entry fee for an accompanying car show.

For more information, call 416-471-9823 or 416-892-4111.

Quoteworthy

"When I got up, I realized the pool was clear and there were about 600 people on the beach staring at me. As I walked away, everyone started to clap and cheer. I entered the trailer and let it all out."

Lifeguard Kathryn DeVries on rescuing a boy at Canada's Wonderland. See story on page 1.

Contacting Us

Have a news tip? Please:

• phone us at

(905) 640-2612

• e-mail us at

jmason@yrng.com

• visit us at

34 Civic Ave., Stouffville



Markham Farmers' Market

8 am — 1 pm

Dairy • Honey • Crafts • Flowers • Art

CORN ROAST & GIANT GARAGE SALE

SATURDAY, AUGUST 30TH

Entertainment by 'Gypsy Gyps'

Fresh Food, Friendly Faces.

Robinson St. and Markham Rd.
Black North York

More Produce • Craft Vendors