

# Yes!

## we can deliver your flyers

### FROM 4.5¢

**FOR MORE INFORMATION ON OUR FLYER DISTRIBUTION CALL CHERRYL STEER AT 905-294-2200 CELL 416-717-0393**

# Stouffville dream car arrived in pieces

A dishy 1951 Ford Victoria, named "The Dreamsicle" for its tangerine Creamsicle colour, was one of more than 325 vehicles on display at Sunday's Antique and Classic Car Show at the Whitchurch-Stouffville Museum.

More than 1,400 visitors came to see the vintage cars and 50 Miatas displayed by the Trillium Club at the museum, which is in the hamlet of Vandorf.

It took five years to make the "The Dreamsicle" a reality. The vintage vehicle was given to Stouffville's Lorraine Schneider by her husband Steve in 1997. He came home with a big announcement: "I bought you a car for your birthday."

Mrs. Schneider rushed outside to see her new gift, but had trouble finding the vehicle. Her husband directed her attention to a neat stack of cartons. He had bought the car — dismantled — at an estate sale.

Mr. Schneider, who has operated The Painters Edge paint and body shop for 18 years here, spent the next five years lovingly building the car "from the ground up", Mrs. Schneider said.

A photo caption in last week's (Aug. 7) Stouffville Sun/Tribune mistakenly attributed the ownership of the car to Steve's brother, Mike.

The museum car show was the first public outing for the car. Mr. Schneider has also built a 1969 Corvette and a 1968 Camaro and displayed them at the museum show.

Several vehicles were chosen for

## Our Town

with *Hannelbre Volpe*

drivers' choice and people's choice awards at this year's show.

In the Drivers' Choice awards, Gord Houston's 1940 Ford was the antique winner, with a 1933 Morgan S.S. owned by Alec Knight runner-up. Jim Rae's 1963 Impala S.S. was the classic winner with Vic Brincat's 1958 Cadillac the classic runner-up.

The winners in the novelty class — in both classes — were Mary Agresti's 1956 Chev Nomad in first and Steve Leadbeater's 1931 Ford Model A as runner-up.

In other people's choice awards, Alec Knight won in the antique category for his 1933 Morgan S.S.; antique runner-up was a McLaughlin Buick limo owned by Robert and Doreen Ward.

The classic winner was a 1964 Galaxie 500 XL owned by Allan Massicotte; the runner-up was John Aldred's 1970 Chevvelle S.S.

### Artist sees off challenges

Richard Fronske's artistic explorations ranging from traditional oil paintings to wooden dinosaurs with movable limbs will be displayed at this weekend's Lions Art in the Park in Uxbridge.

Painted landscapes on saw blades, moulded reproductions of ancient gargoyles and Egyptian artifacts are

the life-long Stouffville's resident's latest ventures.

After graduating from Stouffville District Secondary School, he studied graphic design at George Brown College.

He'll be among the more than 50 artists at the Uxbridge Art in the Park, which runs Saturday and Sunday from 10 a.m. to 5 p.m. in Elgin Park. Admission and parking are free.

Mr. Fronske has taken part in the past seven Uxbridge shows, having missed only the inaugural exhibition.

Mr. Fronske runs his own business producing real estate signs using an industrial screening process.

More information on the art show sponsored by the Uxbridge and District Lions Club is available at [www.uxbridge.com/lionsart](http://www.uxbridge.com/lionsart).

### Council on a roll tonight

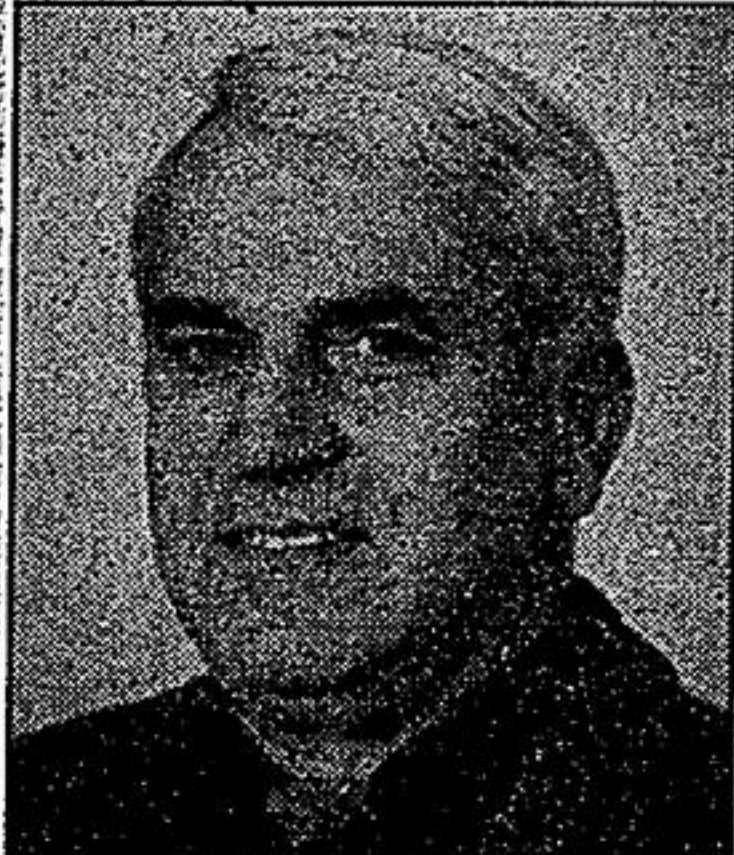
Whitchurch-Stouffville councillors and town staff will be bowling with the experts tonight at the Stouffville Lawn Bowling Club.

The club invited all town staff to learn how to lawn bowl while playing in their first tournament at 7 p.m.

Club members will be instructing newcomers on the finer points and strategies of the game.

Local bowlers are trying to raise the profile of their sport in town. Member Glenda Dunkeld pointed out that the sport is a lot harder than it looks. "It's not just for old folks," she said.

## It Does Take a Community to Raise a Child



**Steve Pliakes**  
Candidate for Mayor

When it comes to our kids, three key words come to mind: responsibility, accountability and investment.

Over the past 10 years, Whitchurch-Stouffville's taxpayers have paid for parks, parkettes, ice pads, baseball diamonds, soccer pitches, tennis courts, a skate-board park, and an indoor swimming pool and library complex. Money even went to keep our outdoor pool open. All these things were built with the kids in mind.

Still, our local newspapers continue to report that youth crime, particularly vandalism, haunts teenagers and younger kids vandalize our public and private property alike.

They smash windows, set fires, break signs, destroy trees, shrubs and flower containers. While eyesores from littering makes us all angry, town staff is constantly repairing damage at the gazebo on Stouffville's Main Street. What was supposed to be a lovely resting spot, especially for our seniors, is now a trouble spot. Seniors are afraid to go near the gazebo. A while ago, police laid a number of drug charges against young people. The arrests were made at the gazebo. At the same time, owners of downtown businesses struggled for answers to the problem. Members of the business community continue to wonder if the situation will ever improve.

Cameras in the downtown core are not the answer nor is sitting back wringing our hands. Our children are our responsibility. Kids from Whitchurch-Stouffville make up the bulk of the trouble. We can't blame our youth problems on kids from neighbouring towns. If I'm elected mayor on November 10th, I will propose that we come together as a community and provide a youth gathering spot — a place the kids can call their own. While the town could handle most of the administrative costs tied to such a youth centre, volunteers from our youth cores and service clubs could help run it. We could invite the business community to get involved as well.

### Police

Since an ounce of prevention is worth a pound of cure, we need more police in town, in our hamlets and in our rural areas. If I'm elected mayor on November 10th, I will show the leadership required to lobby for more police in this municipality. The status quo isn't good enough. Last year, about \$120 million was spent on policing in York Region. Still, we are under-policed in Whitchurch-Stouffville. I will work very hard to get us more policing. Anything less would be irresponsible.

### Adopt-A-Park

If I am elected mayor on November 10th, I'd like to strike a town-wide Adopt-A-Park program. Such programs have helped reduce vandalism in other municipalities. They'd work here. In setting up the Adopt-a-Park program, we could work in partnership with our schools to have each school in Whitchurch-Stouffville adopt a park or parkette. During the school year, students from the individual schools would help oversee the care of the park. Such a program not only would give children a sense of responsibility but it would give them a sense of pride. Remember, kids won't wreck what they own and what they take pride in.

### Children are Precious

Our youth is our most precious resource. Local government must be the first to recognize this. Help is available to the parents who need a helping hand. Let's make sure every parent in this community knows where to go if they need assistance in the raising of a child. Remember, it is the hardest job in the world. If I am elected mayor on November 10th, I will try to provide better links between the community and the child.

### Stop the Escalation of Youth Crime

If I am elected mayor on November 10th, I will lead a community who's people are willing and able to put their heads together with the young people and our police to fight crime in this town. If we do nothing, crime will escalate. I ask for your support on November 10th.

**Support Steve Pliakes for Mayor of Whitchurch-Stouffville on November 10th. Call 905-830-1292 or 416-574-3903**

## Mercedes-Benz 2003 Model Summer Clearance Event!

# 2.9% to 4.9% LEASE RATES

Until August 30th, your Mercedes-Benz London and Newmarket Retailers are making available a select number of remaining 2003 model vehicles with exceptional savings. If you've been waiting for the ideal time to purchase or lease a new Mercedes-Benz, your patience is about to be rewarded.



Mercedes-Benz

Mercedes-Benz Markham  
8350 Kennedy Rd. (905) 305-1088

Mercedes-Benz Newmarket  
230 Mulock Dr. (905) 853-6868

[www.mercedes-benztoronto.ca](http://www.mercedes-benztoronto.ca)

Leasing 2003 models of E55 AMG, SL500, and SL55 AMG. 2.9% lease rate applies only to remaining 2003 C230's and C320's. All leases based on a 24-month walkaway lease with 10,000 km/yr allowance. Please contact Dealer for details on down payments and lease terms. Taxes, license, freight, PDI and security deposit extra. OAC. Offer ends August 30, 2003.