

False report of West Nile mosquitoes 'unfortunate situation': York official

From page 1

says it was just doing its duty when it released the first test results from a private lab in the Ottawa area.

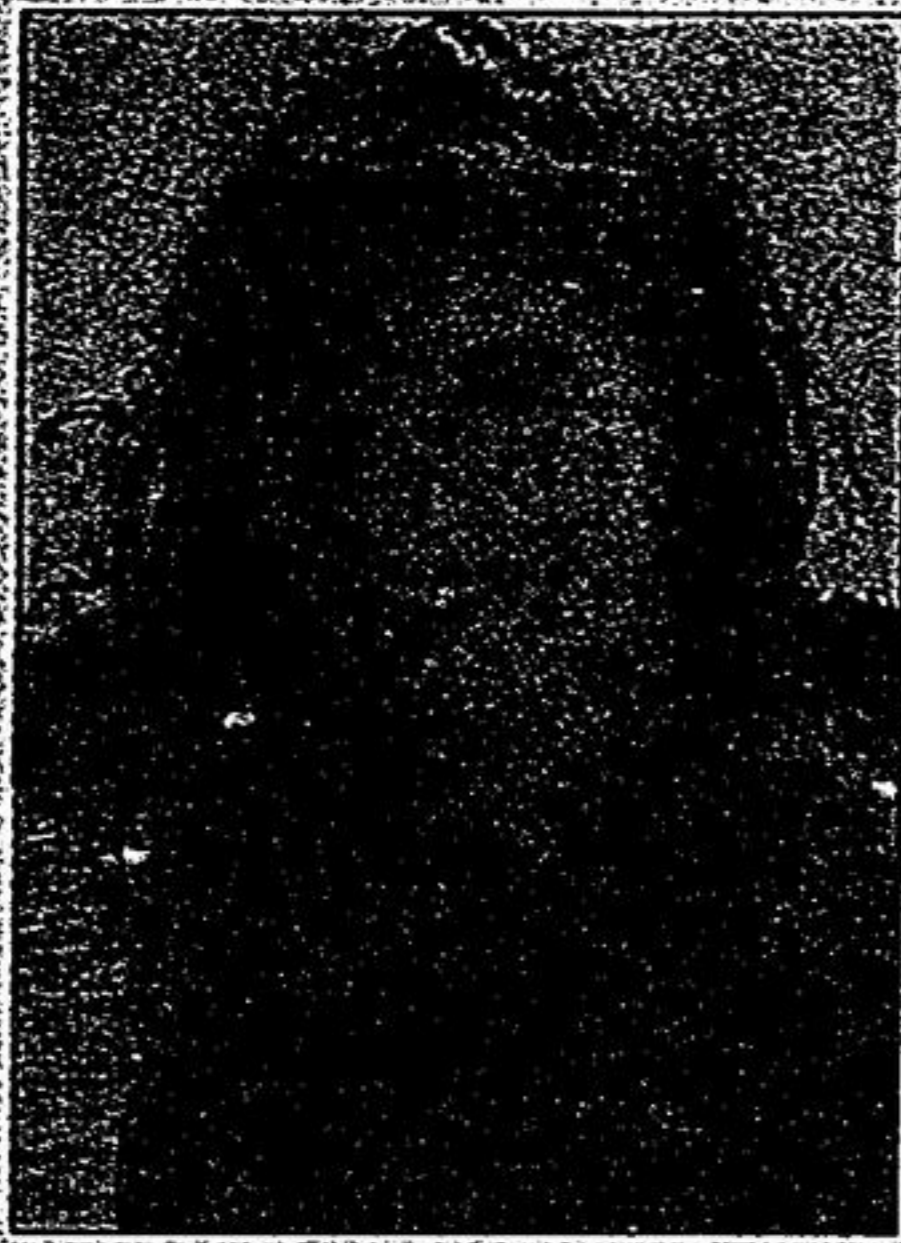
"This was an unfortunate situation, however, York Region continues to be up front with our information and messages to the public regarding West Nile virus," said Dr. Hanif Kassam, the region's associate medical officer of health. "The decision to inform residents of the preliminary test results was a health decision to protect health and safety of the public."

Dr. Kassam pointed out laboratory tests are not 100-per-cent accurate.

"There is, in fact, a 70 to 90-per-cent accuracy rate. This is why the preliminary positive results were sent for verification to the federal laboratory in Winnipeg," Dr. Kassam said.

Bill Mindell, the region's director of infectious disease control, said the mistake was due to an error at the Ottawa lab but did not know why it happened.

"We have to draw a fine line between withholding information from the public and releasing information. We chose to err on the side of caution," Mr. Mindell said at news conference Tuesday.



JUANITA JENKIN: Report of West Nile near Cedar Beach camp kiss of death this summer.

"There are lab errors in any tests. It happens but generally, it's fairly reliable. If we have positive mosquito pools, we will make every effort to make sure it's a correct report."

"But why didn't they wait until they had all the test results? They issued a false report."

York Region health officials called and apologized for the error, but that's not good

enough, Ms Davies said.

"I understood the need for the region to deal with a health issue. I understand they have to alert the public. But why didn't they wait until they had all the test results? They issued a false report," said Ms Jenkin.

A report of a potentially fatal disease in the vicinity of a recreation business is like the kiss of death, she stressed.

When the region's health department announced the first test results, it should not have specified the exact intersection, she argued.

"They could have made it a more generalized statement, (saying the mosquitoes were found) in York Region or north of Toronto, until they knew for sure."

More than 18,000 day visitors come to the beach every summer, while the two large seasonal trailer park operations welcome clients from across Canada, the United States and Europe.

The 74-year-old business is not a small operation, Ms Jenkin said. The campers and visitors were not in danger at any time.

There were 14 positive mosquito pools reported last year in York Region. To date, this year, two have tested positive: one in Newmarket and one in Aurora.



If you or your children have trouble breathing, Zabet would like you to consult your doctor or call the Asthma Society of Canada at 1-800-787-3880 to find out more about asthma and its treatments. You'll breathe a little easier.



This message brought to you as a community service of The Economist/Sun-Tribune

With new neighbours, you're never sure what to expect.



With us you'll always get a warm welcome.

Quizno's Grand Opening
August 8th & 9th, 2003!



15 Ringwood Dr., Stouffville
905-642-9731

Tell us "Toasted Does Taste Better!"
and receive a small sandwich for only \$2.99!
Enter Our Draw to win a Mountain Bike!

Valid only at the Stouffville location. Not valid with any other offer. Taxes extra. Valid Aug. 8 & 9/03

VISA MasterCard AMERICAN EXPRESS

ALL PRICES CASH & CARRY DELIVERY AVAILABLE

SHELL BUILDING CENTRES

80 YEARS SERVING YOUR COMMUNITIES

DO IT NOW SALE!

STOUFFVILLE
33 Edward Street
905-640-3440 Fax 905-640-7671

SUTTON
20971 DALTON ROAD
905-722-6561 Fax 905-722-9919

DECK & FENCES	
1"x6" - 5' P.T.	1.99/ea
1"x6" - 6' P.T.	2.39/ea
5/4"x6" - 8' to 16' P.T.	.73 ft
2"x4" - 8' to 16' P.T.	.57 ft
2"x6" - 8' to 16' P.T.	.82 ft
2"x8" - 8' to 16' P.T.	1.12 ft
2"x10" - 8' to 16' P.T.	1.53 ft
2"x12" - 8' to 16' P.T.	2.28 ft
4"x4" - 8', 10' P.T.	1.06 ft

MORE DECK & FENCES	
6"x6" - 8'-16' P.T.	2.49 ft
2"x4" - 8' Grooved	5.49 ea
4"x8" P.T. Reg Lattice	7.49 ea
1"x8" P.T. Reg Lattice	1.98 ea
4"x8" P.T. Priv Plus Lattice	16.29 ea
1"x8" P.T. Priv Plus Lattice	4.60 ea
4"x8" P.T. Square Lattice	26.49 ea
2"x2" - 42" P.T. Balluster	.95 ea
2"x2" - 48" P.T. Balluster	1.05 ea

THE REAL GOOD STUFF - CEDAR	
1"x6" - 5' Cedar	3.95 ea
1"x6" - 6' Cedar	4.75 ea
2"x4" - 8'-16' Cedar	1.10 ft
2"x6" - Cedar	see store for details
5/4"x6" - Cedar	see store for details
4"x4" - 8'-16' Cedar	2.60 ft
1"x8" Cedar Reg. Lattice	5.95 ea.
1"x8" Cedar Priv. Plus Lattice	10.20ea.
4"x8" Cedar Square Lattice	33.60 ea.

BUILD A SHED, CABANA, WHATEVER	
2"x3" - 8' spr	1.79 ea
2"x4" - 8' spr economy	1.60 ea
2"x4" - 8' spr	2.65 ea
2"x6" to 2"x12"	see store for details
1/2"x4'x8' spr ply	20.80 ea
5/8"x4'x8' t&g spr ply	26.20 ea
5/8"x4'x8' yellow pine siding	39.95 ea
#2 Cedar Shingles	39.95 ea

NEED NECESSARY MASONRY PRODUCTS	
30 kg concrete mix	3.50 ea
30 kg mortar mix	4.55 ea
30 kg sand mix	4.55 ea
6"x8' sono tube	5.60 ea
8"x8' sono tube	7.80 ea
Deck Blocks	5.98 ea
6" Concrete Blocks	1.19 ea
8" Concrete Blocks	1.49 ea

NEED A NEW ROOF	
20 year Armour plus IKO shingles	14.75 bu
25 year Aristocrat IKO shingles	15.95 bu
25 year Renaissance IKO shingles	22.49 bu
30 year Chateau IKO shingles	22.49 bu
#15lb asphalt	20.49 roll
#550 Brown or Black Vents	9.49 ea
IKO Ice & Water Shield	69.99 roll
Black or Brown Valley Iron	21.95 ea

OSTACO VINYLCLAD WHITE PATIO DOORS
5' ~ \$475.00
6' ~ \$495.00

PRICES GOOD UNTIL SUNDAY AUGUST 17th, 2003
*In the event of a printing error please refer to posted prices in store

HOURS OF STORE OPENINGS:
STOUFFVILLE: MON.-THURS: 7:00am-6:00pm
FRI: 7:00am-8:00pm, SAT: 8:00am-5:00pm SUN: CLOSED
SUTTON: MON.-THURS: 7:30am-6:00pm
FRI: 7:30am-7:00pm; SAT: 8:00am-5:00pm SUN: 10:00am-4:00pm