

Scarborough Dukes of Harmony

Barons of Barbershop

Saturday, October 26th

Christ Church

254 Sunset Blvd., Stouffville

Matinee 1:30 pm or Evening 7:30 pm

Adults \$20.00 Seniors and Students \$15.00

Call 905-640-3561 for more ticket information



The message brought to you as a community service of the Economist & Sun/Tribune

We provide supportive care for people of all ages who are experiencing the impact of life-threatening illness or loss. Please call, and see how we can help.

Evergreen Hospice
MARKHAM - STOUFFVILLE

[T] 905.472.5014 [F] 905.472.4128
www.evergreenhospice.org

FRAN/MAC

Construction and Repair

For All Your Indoor & Outdoor Construction Needs

- Full Basement Renovations
- Kitchen • Bathrooms
- Decks • Roofing • Painting

Financing Available

Frank McGillan
Tel. 905-642-8625 Cell 416-892-4111



COMMUNITY CARE ACCESS

Centre of York Region

This message brought to you as a community service of The Economist & Sun/Tribune

We're here for you...

The Community Care Access Centre is your hospital without walls, arranging nursing and support wherever you need it - at home, at school or in other places in the community.

Call 1-888-470-2222

EMS CARPET

Division of Werek Enterprises Incorporated

RAY GIRARD

Manager

- Remnants
- Area Rugs
- Installations

Located at the
Stouffville Country Market

12555 10th Line N.,
905-642-5949



Sponsor of "Spirit of Stouffville" Junior "A" Hockey Club Games every Thursday night

STORE HOURS:
Thurs. & Fri. 10 am - 4 pm
Sat. 8 am - 4 pm
Sun. 9 am - 4 pm

THINK OF US AS PERSONAL TRAINERS FOR YOUR CAR.

MAINTENANCE PACKAGE

\$39⁹⁵
Plus tax

- Lube, oil and filter • 15 point inspection including antifreeze, tires, wipers, hoses & belts • Tire rotation • Brake inspection
- Top up fluids • Set tire pressure

INCLUDES AN ELECTRONIC BATTERY TEST.

AND WE'VE GOT YOUR TIRES TOO!

Our price includes installation, balancing, valve stems, lifetime inspection, 10,000 km rotations and applicable road hazard protection and treadwear warranties.

UNIROYAL® TIGER PAW® ASC™ P185/75R14

\$67⁹⁵
Plus tax

FITS MOST '90-'94 SUNBIRDS AND CAVALIERS

UNIROYAL® TIGER PAW® ASC™ P215/75R15

\$80⁹⁵
Plus tax

FITS MOST '94-'01 SAFARIS AND ASTROS

UNIROYAL® TIGER PAW® ASC™ P205/70R15

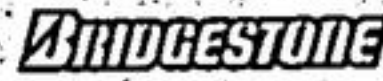
\$83⁹⁵
Plus tax

FITS MOST '90-'00 GRAND PRIXES AND EIGHTY-EIGHTS

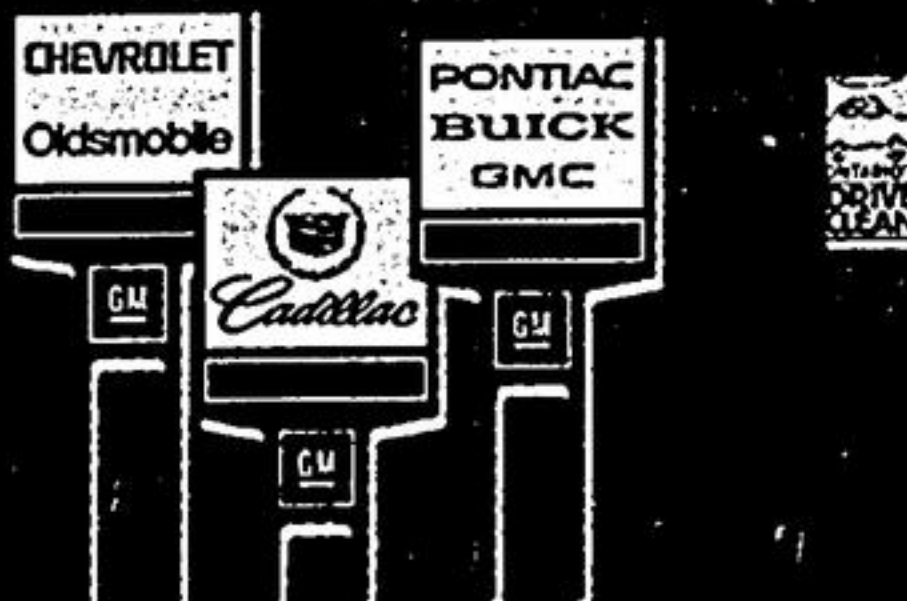
UNIROYAL® TIGER PAW® ASC™ P235/75R15

\$89⁹⁵
Plus tax

FITS MOST '96-'99 JIMMYS AND BLAZERS



OUR COMPUTERIZED ALIGNMENT SERVICE WILL RESTORE THAT 'ON-CENTRE' DRIVING FEEL AND HELP YOUR TIRES LAST LONGER.



Goodwrench Service
Right. On time.

At your GM Dealership. goodwrench.gmcanada.com 1-800-GM-DRIVE

Neighbourhood

Employment Resource

Centre

We Can Help!

Through our year round no cost facility

NEW ADDRESS
28 SANDIFORD
UNIT 7 (BEHIND
MCDONALDS)

We provide many services:

- Resume critiquing
- Computer internet access
- Accessing the hidden job market
- Trained Personnel who listen and advise
- Fax & photocopying
- Knowledgeable employment facilitator
- Opportunities to network with peers or like-minded individuals
- Marketing yourself

We provide no cost, year round employment services to all members of the community.

UPCOMING WORKSHOPS

The Whitchurch Stouffville Public Library & Stouffville Neighbourhood Employment Resource Centre

Oct. 29	Stress Management	6:45 - 8:45
Nov. 5	Introduction to Internet	7:00 - 9:00
Nov. 12	E-mail and Your Job Search at Neighbourhood Resource Centre	7:00 - 9:00
Nov. 12	Team Building at Stouffville Public Library	6:45
Nov. 19	Resume Writing	6:45 - 8:45
Nov. 26	Small Business Workshop	6:45 - 8:45

For more information call **905-640-2856**

Operated by: A Funding Partnership With Human Resources Development Canada

Canada

GM Goodwrench Service dealers located in Thunder Bay, Fort Frances, Dryden, Terrace Bay and Kenora are excluded from this promotion. Participating GM Dealerships may set individual prices. LOF includes up to 5L of GM premium motor oil. Offer valid on most GM vehicles. Limited time only. Offer available to retail customers only. See Service Advisor for offer conditions and more details or call 1-800-GM-DRIVE. An official trademark of the Province of Ontario used with permission.