

To serve and protect

Most of us have, at one time or another, tried performing basic under-the-hood maintenance on our cars. This usually involves balancing various wrenches, sockets and parts while at the same time desperately trying not to get our clothes dirty or scratch the paint on our pride and joy. American Non-Slip Products has the solution to our woes with its Fender Mat Plus. This particularly grippy 24x36-inch (60x90-centimetre) mat will not only stick to your fender like glue, it'll keep your tools from slip-sliding away (do you see that wrench hanging on in the photo?). The Fender Mat Plus is made of a cushiony, heavy-duty material that not only protects you and your vehicle, but is completely washable. We can tell you from our own personal experience with Fender Mat Plus that it really does grip. Best of all, it costs just US \$14 and can be ordered by calling 1-770-889-8905.

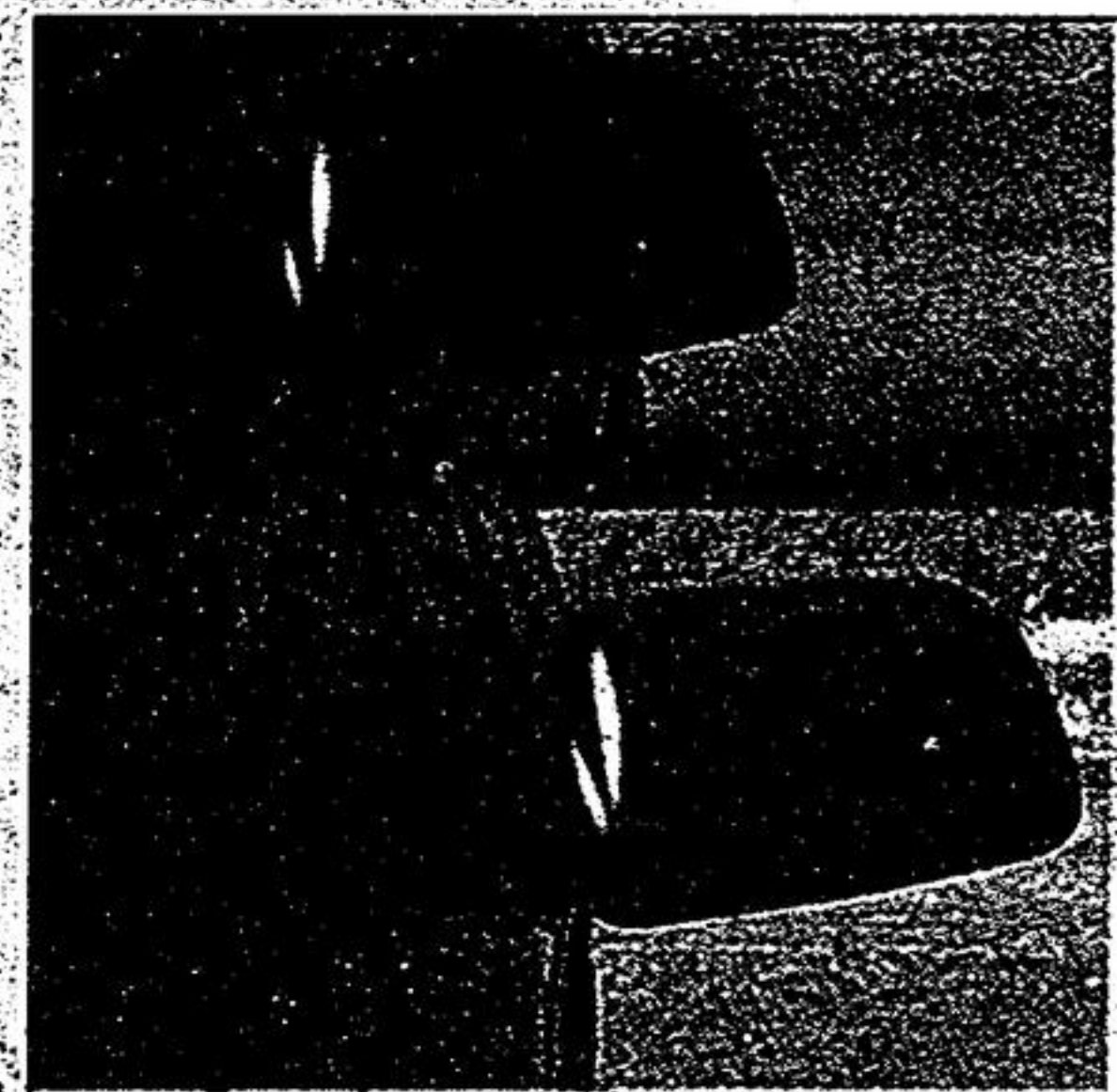


Stereo power!

Remember the days when a push-button 40-watt-per-channel stereo power 'booster' in your Dodge Dart would earn you the hot-stuff, noisy-kid-on-the-block award? Well, times have changed — except the noisy-kid part — and so has the technology and sophistication in the mobile-sound business. Forty watts? You'll need a little more than that to keep up and win a few stereo competitions along the way. How does 4,000 watts sound (yes, four thousand)? Pretty loud, we'd guess, but that hasn't stopped MA Audio based out of Rancho Dominguez, Calif. from offering this — and six other — high-current amplifiers (from 2x50 watts at four ohms and up). The specifications are too detailed to get into in this short space, but we will say that with cooling fans, VU (volume unit) meters, line out and power supplies "big enough to run a city," these state-of-the-art amplifiers are like few — if any — others on the planet.

Power mirrors that extend

You might have heard of six-way adjustable power seats, but have you ever heard of six-way adjustable power . . . mirrors? Neither had we until we ran into the Power Vision display at the Specialty Equipment Marketer's Assn. (SEMA) show in Las Vegas, Nev. The neatest thing about these truck mirrors, specifically built for tow vehicles, is their ability to telescope 13 centimetres to afford better rear/side visibility. Available for Ford Super Duty, 1988-2002 Chevy/GM pickups ('91-up full-size SUVs) and Dodge full size pickups from 1994-2001 (2500s from '94 up), Power Vision's mirrors replace the factory units (with few if any modifications) and can be ordered heated if your vehicle came that way from the factory. The mirrors also pivot forward or backward so the vehicle can fit into tight spaces (or simply fold if you bump into something), the glass is non-convex so it doesn't distort the view (vital for backing up), they offer a clean, factory-installed look and there's a one-year limited warranty. For order information, visit the Oregon-based company at powervisionmirrors.com.



NISSAN

AUGUST IS CLEARANCE TIME FOR THE 2002's

2002 Nissan Sentra
2002 CarGuide "Best Buy"



For only **\$199** /month*
for 48 months, only \$1,298 down.
No Security Deposit O.A.C.

Lease **Sentra XE** with Value Option Package

Or choose **1.8%** Financing.
NO PAYMENTS FOR 90 DAYS.

* 126-HP 1.8-litre DOHC engine • Air conditioning • AM/FM with CD audio system and 4 speakers • 14" steel wheels • Full wheel covers • 8-way manual driver's seat • 60/40 split folding seat • Centre console armrest • And much, much more.

2002 Nissan Altima
2002 Canadian Car of the Year

"BEST NEW FAMILY CAR"
AUTOMOBILE JOURNALISTS ASSOCIATION OF CANADA



For only **\$319** /month*
for 48 months, only \$3,320 down.
Includes Destination and Delivery.

Lease **Altima 2.5S** with AUTOMATIC

* 175-HP 2.5-litre DOHC engine • Air conditioning • AM/FM with CD audio system and 6 speakers • Power heated outside mirrors • 60/40 split rear seat w/lock • 8-way manual driver's seat • Tilt and telescope steering column • And much, much more.

2003 Nissan Maxima
Introducing the new benchmark in performance and luxury



For only **\$399** /month*
for 48 months, only \$3,900 down.
Includes Destination and Delivery.

Lease **Maxima GXE** with AUTOMATIC

* 255-HP 3.5-litre DOHC 24-valve engine • 4-speed automatic with gated shifter • 16" alloy wheels (5-spoke) • Anti-lock Braking System • Dual power, heated mirrors • HID Xenon headlights • 8-way power driver's seat • Automatic climate control A/C with microfilter • Power windows, locks, trunk/fuel release • Cruise • Sport steering wheel • Premium CD stereo with AM/FM/cassette • And much, much more.

2002 Nissan Pathfinder
"Chilkoot Edition"
Only Available in Canada



For only **\$399** /month*
for 48 months, only \$5,199 down.
Includes Destination and Delivery.

Lease **Pathfinder "CHILKOOT EDITION"**

Includes over \$2,100 in additional value-added options • 4-speed automatic with overdrive • "All-Mode" 4-wheel drive • Upgraded 150-watt Bose® CD audio system with in-dash 6-disc autochanger • 8-way adjustable driver's seat • Dark titanium-coloured side-step rails • Steering wheel-mounted audio controls • Upgrade interior trim • And much, much more.

2002 Nissan Xterra



2002 Xterra SE SuperCharged
starting at **\$34,498**

- 210-HP SuperCharged engine
- 17" aluminum alloy wheels
- Premium 210-watt audio system
- Side-step rails
- And much, much more...

HURRY WHILE SUPPLIES LAST!

VILLAGE NISSAN

4600 Hwy. 7, Markham
(905) 477-3337
www.villagenissan.com



Smart people always read the fine print. And they always wear their seat belts. Offers available for a limited time and may change without notice on new 2002 Altima S (14K73 AE00), 2002 Sentra XE 5-speed manual with Value Option Package (C4L652 BX00), 2002 Pathfinder "Chilkoot Edition" Automatic (5CR773 AE00) and 2003 Maxima GXE Automatic (U4M573 AA00). 1.8% purchase financing for 36 months and no payments for 90 days is available only on 2002 Sentra XE and GXE models. No interest charges will apply during the first 90 days after purchase take delivery. After the first 90 days, interest starts to accrue and the purchaser will repay principal and interest monthly over the term of the contract. Financing example: \$20,000 at 1.8% per annum equals \$371.11 per month for 36 months. COB is \$500.00 for an obligation total of \$20,500.00. 2.8% purchase financing for 36 months available on other models. Financing example: \$20,000 at 2.8% per annum equals \$579.80 per month for 36 months. COB is \$273.07 for an obligation total of \$20,273.07. *48-month lease on Altima/2002 Pathfinder "Chilkoot Edition" Maxima GXE. Down payment or equivalent trade of \$2,000 (\$1,999.99). Lease based on a maximum of 90,000/75,000/60,000/45,000 km with excess charged at \$0.10/km. If the vehicle is financed at 1.8%/2.8% and the cash purchase price is not taken, the effective interest rate is 1.8% for Sentra and 2.8% for Pathfinder "Chilkoot Edition". All offers are O.A.C. and include destination and delivery (Sentra \$388 included with Maxima, Altima and Pathfinder) (\$350 lease administration fee for Sentra). Licence, insurance, taxes and other Dealer/ship charges are extra and must be paid at the time of transaction. See your Nissan Dealership for details. Offers cannot be combined with any other offers. Dealer may outsource for lease. Not all vehicles are available at all Dealerships. Vehicles not exactly as shown. Nissan logo is a trademark of Nissan Canada Inc. Visit www.nissan.ca.