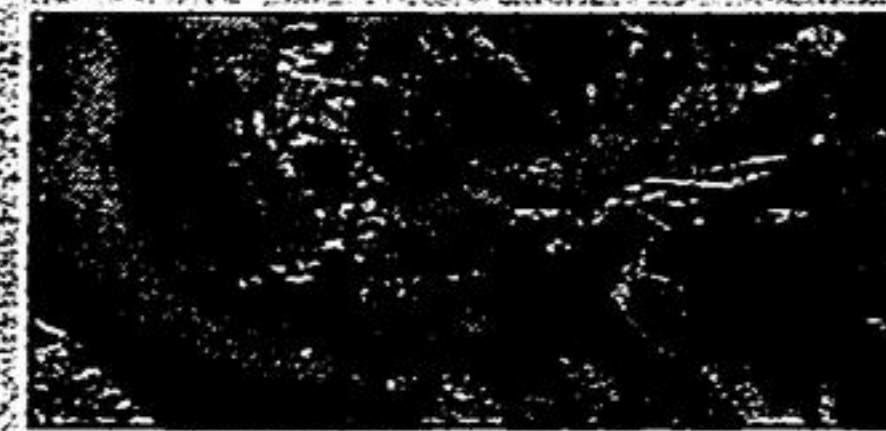


INSIDE: Letters 6
 New You 10
 Registration 14
 Classified 15

5 Collision between two trucks on Stouffville Road kills 56-year-old Beaverton man.

COMMUNITY CALENDAR

EVENT: Summer chess program
WHEN: Mondays (905-642-7323)
WHERE: Whitchurch-Stouffville Public Library



8 Pickin' and sometimes grinnin': Time not always ripe for seasonal operations.

SERVING WHITCHURCH-STOUFFVILLE SINCE 1888

Stouffville Tribune

50 CENTS INCLUDING GST / 36 PAGES

SATURDAY, JULY 13, 2002

TO REACH US: (905) 640-2612

ORIGINAL STOUFFVILLE FURNITURE WILL BECOME DISCOUNT OUTLET

Furniture store buys old IGA

BY JOAN RANSBERRY
 Staff Writer

The need to double the size of their store prompted the owners of Stouffville Furniture to buy the old IGA store.

George and Vile Papas will open Stouffville Fine Furniture on Main Street in downtown Stouffville on Sept. 30. The new store will be open seven days a week.

"We'll celebrate with a grand opening," said Mrs. Papas. "It will be a wonderful day."

The decision to expand and open a second store was based on both need and faith in Whitchurch-Stouffville, said Mrs. Papas.

"We've outgrown our space at our present location in the west end of town," said Mrs. Papas. "We've been in town since '93. We've been

considering moving for a while. This is a family business and this was a family decision."

A great deal of the business at Stouffville Furniture is repeat business, Mrs. Papas pointed out. "This community has been good to us. We've succeeded on word of mouth and on referrals. Our customers have been very supportive. Stouffville grows and we are grow-

ing with it," she said.

The large grocery store at 6327 Main Street was left vacant more than a year ago when Sobeys closed the IGA and opened a new food outlet further west of town.

"We've been eyeing the building for some time," said Mrs. Papas.

The decision to buy was clinched when the Papases realized

See LARGE, page 7

Towns face major repair bills for roads, centres

Time to fix municipal infrastructure

BY LINDA JOHNSON
 Staff Writer

Crumbling sidewalks, worn roads and aging community centres could cost area municipalities millions over the next few years.

Much of the infrastructure built to serve expanding populations is now in dire need of repair. It includes town-owned buildings, recreation facilities and equipment, computer systems and vehicles.

Many municipalities have been slow to face the problem and, since it's coming at the same time they're faced with downloading costs, they could be headed for a major cash crunch.

Unless Richmond Hill's repair and replacement fund gets a major infusion of cash, it will soon be out of money, councillors were told this week. While the town has been putting \$6 million into the fund every year, it's now paying out \$15 million a year.

At that rate, the \$43-million fund will be dry by 2007, finance commissioner Dan Elliott warned at a budget meeting Wednesday.

"We're on a crash course which could hit in 2007," he said. "So we need a serious ramp-up of contributions to this fund. It needs to be full-front in our minds."

He said many municipalities

See TOWNS, page 4.



PHOTO/JASON CHOW

'EMERGENCY' IN THE FOREST

The York Regional Police search and rescue unit and York Region Emergency Medical Services (EMS) conducted mock search and rescue exercises in the York Regional Forest in northern Whitchurch-Stouffville last Saturday. Above, 'patient' Kevin Epp has his mock injuries attended to by paramedics and officers.

Seaway Pools & Hot Tubs
 27 HERITAGE RD., MARKHAM
 294-8030

HONDA
 North Markham Honda
 4611 Hwy. #7
 (west of Kennedy Rd.) Unionville
 905 4 7 7 • 2 4 5 1

\$26.88* Genuine Honda Oil and Filter Change
 Includes premium quality 5W-20 or 5W-30 motor oil, Genuine Honda oil filter and a new drain plug gasket.
MON-THUR PARTS AND SERVICE OPEN TILL MIDNIGHT

2002 HONDA QUALITY DEALER
 North Markham Honda has been presented with the prestigious Total Quality Dealer Award from Honda Canada Inc. for 2002.

Sutton GROUP
Town and Country Realty Ltd.
 640-0888