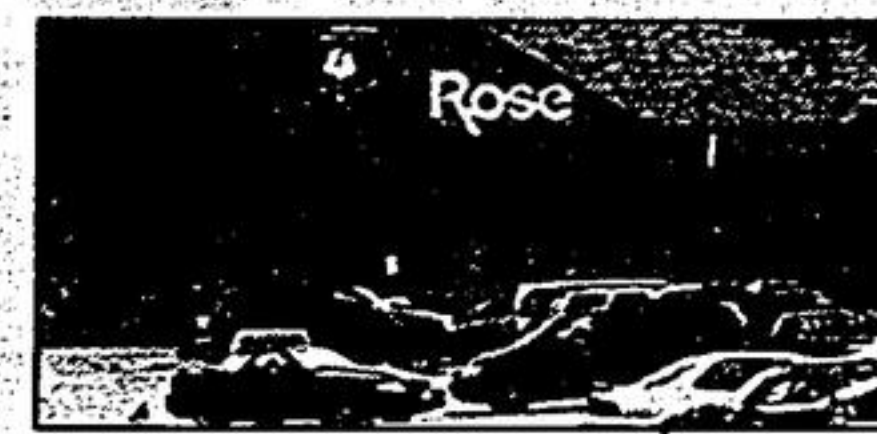


INSIDE: Letters 6
 Events 9
 Scores 19
 Classified 22

18 Stouffville
 Secondary's new
 head coach no stranger to
 high school football scene.

COMMUNITY CALENDAR

EVENT: Whitchurch-Stouffville Strawberry Festival
WHEN: June 26-July 1 (www.strawberryfestival.ca)
WHERE: Stouffville Memorial Park



3 White Rose Nurseries
 workers weren't
 surprised York Region
 company went bankrupt.

SERVING WHITCHURCH-STOUFFVILLE SINCE 1888

Whitchurch-Stouffville Public Library

Stouffville Tribune

50 CENTS INCLUDING GST / 40 PAGES

SATURDAY, JUNE 22, 2002

TO REACH US: (905) 640-2612

CITIZEN OF THE YEAR 'GETS THINGS DONE'

Lightfoot works with cancer society, Music Mania

BY JOAN RANSBERRY
 Staff Writer

Whitchurch-Stouffville's 2002 Citizen of the Year can lead as well as follow.

Liz Lightfoot of Albert Street will be presented with the prestigious award on July 1 during the Strawberry Festival Canada Day festivities. The presentation will be made at 7 p.m. in the Franklin Park marquee in Stouffville Memorial Park.

The citizen of the year award is sponsored annually by The Tribune.

Mrs. Lightfoot's contributions to Whitchurch-Stouffville are many and they are varied. A resident of Stouffville for 22 years, she's volunteered with the Canadian Cancer Society, Whitchurch-Stouffville Mobility Transit, Music Mania, Bach to Blues and Scouts Canada. When her sons Chris, 25, and Todd, 21, were little, Mrs. Lightfoot was a Beaver leader and as a school volunteer, she was known as the "pizza" lady.

Mrs. Lightfoot is "willing to roll up her sleeves" to ensure an event's success, said Joanne Reynolds, manager of the Markham-Whitchurch-Stouffville unit of the Canadian Cancer Society.

"Liz is a model ambassador for us," said Mrs. Reynolds. "She can recognize, anticipate and take advantage of appropriate opportunities for networking and partnerships with local businesses and community organizations, she has secured key sponsors and contracts that have

See LIZ, page 10.

Liz is the toast of the town



STAFF PHOTO/SJOERD WITTEVEEN

Liz Lightfoot is The Tribune's Whitchurch-Stouffville Citizen of the Year. She's photographed on the front porch of her home on Albert Street. The volunteer with the Canadian Cancer Society, Music Mania and Whitchurch-Stouffville Mobility Transit will be honoured on July 1 at 7 p.m. at the Strawberry Festival Marquee.

Cigarette tax hike has stores fuming

Higher costs, security measures concern local operators

BY CHRIS O'BRIEN
 Special

Markham and Stouffville tobacco retailers say Ontario Finance Minister Janet Ecker's new budget is sending their business up in smoke.

"We're expecting to lose sales, because we were figuring on a tax increase," said Derek Monaghan, manager of 1001 Variety on Main Street, Stouffville. "We're not sure what we're going to do."

Minister Ecker's budget, announced earlier this week, included an increase in tobacco taxes of \$8.50 a carton.

"We are re-pricing our smokes here based on what wholesalers are telling us," said Mr. Monaghan.

What stores and smokers can expect is a provincial tax hike of \$5 on the price of a carton. That's on top of a \$3.50-per-carton federal government hike announced simultaneously. That translates into a price hike of between \$1.50 to \$2 per pack.

Variety stores in Markham and Stouffville are raising their prices. They say they don't have any other option.

"I've seen cigarettes for \$8 and \$8.50, even \$9 per pack in some stores," said Rahim Assan, an employee at Family Food Fair at Hwy. 7 and Ninth Line in Markham.

Mr. Assan says the tax increase will affect business because smokers will find other ways to get cigarettes.

"We're selling cigarettes for \$7.50 for a large

See SECURITY, page 5.

Seaway Pools & Hot Tubs
 27/HERNAGE RD., MARKHAM
 294-8030

It's Time to **SUMMERIZE**
 A-Z AND X PLAN
 5396 HIGHWAY #7, MARKHAM
 905-294-1210

1.9% Financing 36 Months Except Tribute
90 DAYS NO PAYMENTS! ON ALL MAZDAS
0% Financing on 626
Markham Mazda

Sutton GROUP
Town and Country Realty Ltd.
 640-0888