

Bruce's Mill hosts 'enviro-picnic'

BY MIKE ADLER
Staff Writer

Corporate sponsors will help entertain and educate schoolchildren in local conservation areas this month as well as make those areas better.

Thousands are expected at Bruce's Mill Conservation Area in Whitchurch-Stouffville June 11-14 for one of the annual "enviro-picnics" organized by Toronto music consultants.

Public, separate and private schools across the Greater Toronto Area have been invited, said Philip Trow of ST Music Enterprises, who with partner Joan Sax has planned the events for seven years. "We know in June the teachers are just dying to get the kids out somewhere."

Environmental education is a focus of picnic activities. The Bruce's Mill event features falconer Matt Lieberknecht and children's entertainer Jack Grunsky.

Enbridge Consumers Gas, Kretschmar, Loblaws and Weston Bakeries are contributing to the picnics, which raise money the Toronto and Region Conservation Authority will use to improve trails and park programs.

Bruce's Mill is on Stouffville Road between Kennedy and Warden avenues.

Insect world explained in Whitchurch-Stouffville

If you've wanted to learn more about insects — one of the most feared and misunderstood parts of the animal kingdom — the Toronto and Region Conservation Authority gives you a closer look this month.

Insectmania, a free, two-hour program that involves netting and identifying local bugs, starts at 7 p.m. Tuesday, June 25 at Bruce's Mill Conservation Area, on Stouffville Road in Whitchurch-Stouffville. Phone 416-661-6600, ext. 5660 to register or hear more.

Suzuki speaks on 'real bottom line' for future of planet

Canadians need to understand our place in the natural world, says geneticist and author David Suzuki.

The host of CBC TV's *The Nature of Things*, whose most recent book is *Good News for a Change — Hope for a Troubled Planet*, speaks in Richmond Hill next week about what he calls the "real bottom line" of the 21st Century.

That "bottom line," Dr. Suzuki will suggest, is that we must adopt a different set of priorities in order to keep the ecosystems we depend on intact.

The 7 p.m. event, Tuesday at the Premiere Ballroom on Leslie Street north of Hwy. 7, is sponsored by the York Region Environmental Alliance.

Doors open at 6 p.m. Tickets are \$20 at the door or \$18 plus service charges from www.ticketmaster.ca.

More information is available from the YREA's Kate Morris at 1-905-953-0011.

2002 PERSONAL ENTERTAINMENT SEASON

Markham Theatre for Performing Arts

Subscribe & save up to 27% OFF Single Ticket Prices!

Off-Net Prices

THE THEATRE SERIES



THE DRAWER BOY
Oct. 30 - Nov. 2, 2002



HAY FEVER
Jan. 22 - 25, 2003



THE TRUTH ABOUT LOVE AND/OR MARRIAGE
Apr. 9 - 12, 2003



CATHY JONES
Oct. 25 & 26, 2002



IVANKA'S PERFECT CHRISTMAS
Nov. 27 & 28, 2002



THAT CANADIAN GUY & FRIENDS
Feb. 7 & 8, 2003



THE JUST FOR LAUGHS ROAD SHOW
Apr. 4 & 5, 2003

THE MARKHAM HYDRO DISTRIBUTION INC. MUSIC SHOWCASE SERIES



PAVLO & CADENCE
Oct. 24, 2002



ROCH VOISINE
Oct. 28, 2002



KINGS OF SWING
Oct. 29, 2002



SOME GREAT SONGS AND A FEW OF MY OWN
Nov. 3, 2002



LAST NIGHT AT THE PROMS
Nov. 18, 2002



THE PIANO MEN: MUSIC OF BILLY JOEL & ELTON JOHN
Nov. 26, 2002



THE IRISH ROVERS
Nov. 30, 2002



CANADIAN BRASS CHRISTMAS
Dec. 1, 2002



THE MESSIAH
Dec. 13, 2002



JEFF HEALEY'S JAZZ WIZARDS
Jan. 16, 2003



NATHANIEL DETT CHORALE
Feb. 6, 2003



OH BROTHER, O CANADA
Feb. 20, 2003



THE COWBOY JUNKIES
Mar. 3, 2003



AN OLD FASHIONED SING-ALONG
Mar. 17, 2003



MOLLY JOHNSON
Mar. 19, 2003



KATE & ANNA MCGARRIGLE
Mar. 27, 2003



RANDY BACHMAN
Mar. 31 & Apr. 1, 2003



AMY SKY WITH OSCAR LOPEZ
Apr. 8, 2003



LIGHTHOUSE
Apr. 14, 2003



PATRICIA O'CALLAGHAN
Apr. 16, 2003

THE FAMILY SERIES



WINNIE THE POOH
Oct. 27, 2002



ROBINSON CRUSOE
Nov. 17, 2002



SHARON, BRAM & FRIENDS
Feb. 2, 2003



JUDY & DAVID'S ROOM BOX
Mar. 10, 2003

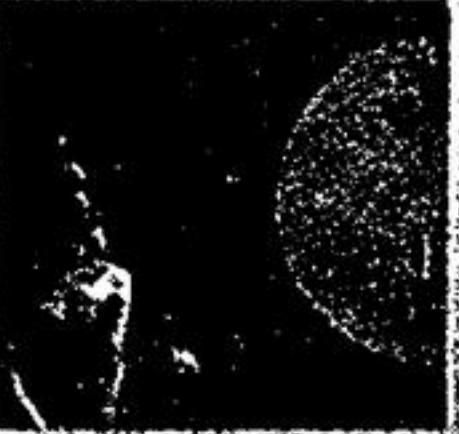
SPECIAL ATTRACTIONS



GEORGE GAO ENSEMBLE
Dec. 27, 2002



THE NEW SHANGHAI CIRCUS
Jan. 2 & 3, 2003



MAD SCIENCE PRESENTS...
Apr. 14, 2003

Take advantage of our "Choose-Your-Own" Series subscription offers and see the shows YOU want to see!

For a FREE brochure, call our Subscription Hotline today!

905-305-5985

OR TOLL FREE

1-866-768-8801

Not available in 416 or 647 areas

Be Cool Baby!
Pre Season Sale!
Low monthly payments (OAC)
SHERIDAN HEATING & AIR CONDITIONING
905-427-4222
Carrier
Call Today For Your Free in Home Estimate

Markham Theatre
171 Town Centre Blvd.
Markham, Ontario
BOX OFFICE HOURS:
Monday - Saturday:
11:00 am - 6:00 pm