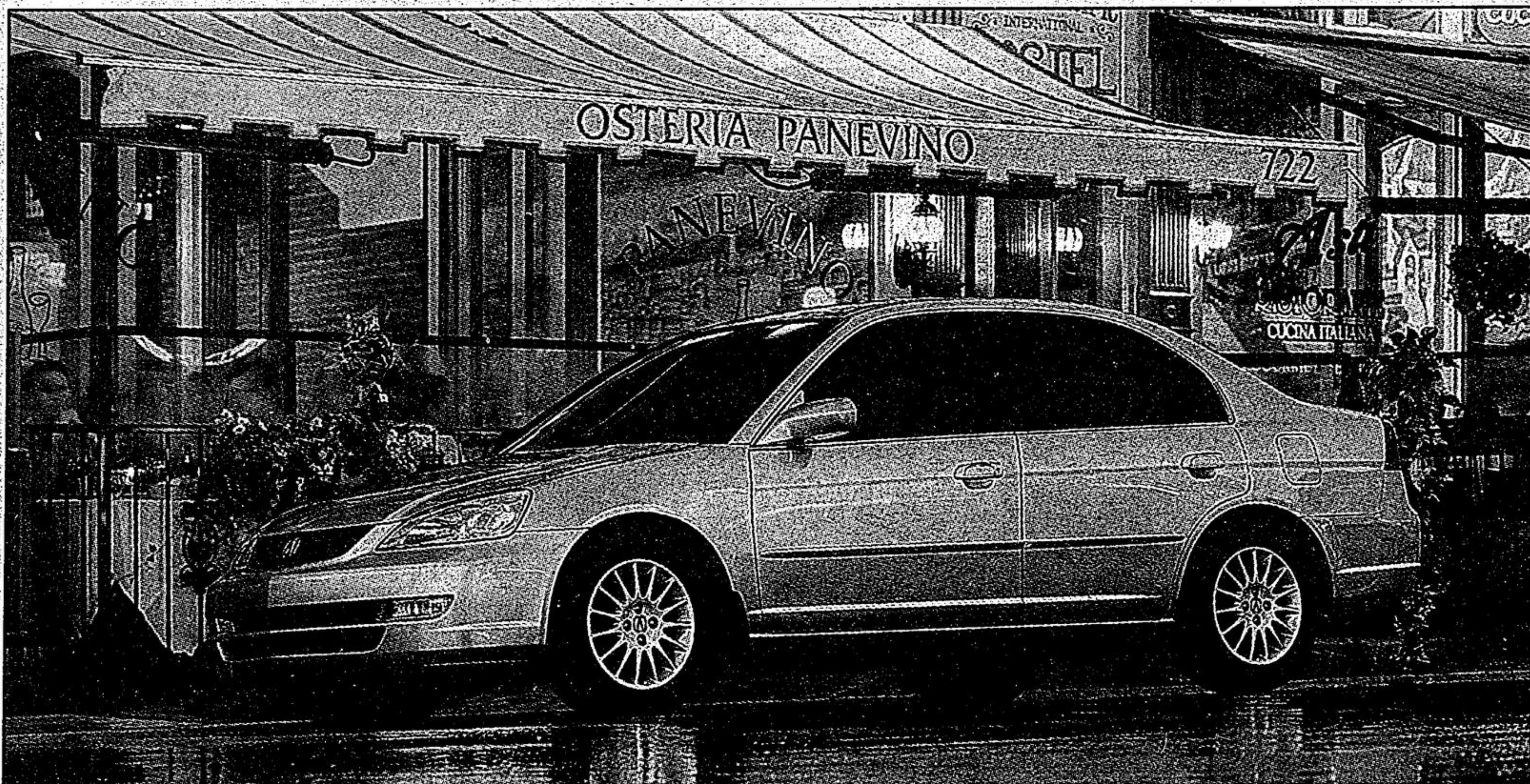


## Out-of-sight sound

We all like good tunes, and that means owning a good car stereo. However, a very obvious problem arises: modern dash-mounted audio equipment just doesn't look right in a classic/vintage/old vehicle. In fact, it can ruin an otherwise top-notch restoration. Now you can hide your hi-tech electronics (and play them, too) with Custom Autosound Manufacturing's new SS Secretaudio stereo. The kit is made up of three basic parts: the receiver/amplifier (25 watts x four channels), LCD display; and the remote-control unit. To install, you first mount the receiver (about the size of a standard in-dash receiver) out of sight, such as under a seat or behind the dash. Then you mount the LCD display under the dash (bracket supplied) or any discreet spot up to three metres (nine feet) from the receiver. Once hooked up, the wireless remote control can operate up to 12 metres (40 feet) away. You can even buy an optional remote-controlled six-disc CD player that also remains hidden. The basic three-piece SS Secretaudio kit retails for US \$240, or US \$490 if you add the CD player. To get a better look, visit [custom-autosound.com](http://custom-autosound.com)

## 'NOS' your average speaker

This gets our vote for the trickiest piece of audio equipment to appear this year. What if you could hide your subwoofer in something that, say, looks like a nitrous-oxide bottle for your sport compact? Well, Bazooka Mobile Audio has done just that with its very cool NOS8 subwoofer kit. This unit consists of a bass-tube enclosure fitted with a spherical end cap that simulates the shape of performance-enhancing nitrous-oxide bottles found in hot rods, both domestic and import. Made of plastic, these 'bottles' are then finished with automotive-grade, high-gloss blue paint to look just like real the real thing. The kit also comes complete with a proper-looking chrome valve at the top of the cylinder and wiring that simulates the braided-hose connections that are typical of nitrous-oxide installations. The NOS8 mounts on an angle or on its side for more traditional sound. The eight-inch subwoofer within can handle up to 200 watts, which is transferred to the speaker via the 12-gauge wire hidden inside the plastic tubing. Also included is the wiring and chrome mounting brackets for quick and easy installation. To locate the nearest dealer or get more information on the US \$400 NOS8, call 1-800-843-8823 or go to [bazooka.com](http://bazooka.com).



### The 2002 Acura EL From \$21,700\*

## Smart runs in the family.

Because every automobile in the Acura line-up happens to be a very intelligent choice. For example, the 2002 EL is equipped with a responsive VTEC engine and an abundance of features, including standard air conditioning, keyless entry and a CD player. And while a typical Acura EL purchase usually begins with an impulse decision based on emotion, the price will quite often end up making you look like a genius. Visit your nearest Acura Dealer for details.



# ACURA

\*M.S.R.P. for the 2002 1.7 EL touring, 5 speed (model ES3562E). Destination charges (\$900), taxes, licence and insurance are additional. See Dealer for details.

**ACURA IN MARKHAM**  
5201 Highway #7 East, Markham (at McCowan)

Available on most Acura models. Taxes not included. Provincial environmental fees, if any, excluded. Dealer may sell for less. See your Acura Dealer for full details. All prices valid at participating Dealers until June 30, 2002.

**905-948-8866**

## MARKHAM MAZDA

**REDUCED  
NO PAYMENT FOR  
90 DAYS  
ON ALL USED O.A.C.**

**1998 VOLVO S70 T5 SE**  
Red, auto, loaded, roof, leather, traction  
Stk. #P0207  
**REG. \$25,995 ~ SALE \$23,900**

**2001 FRONTIER XE 4X4**  
Silver, 5 spd., V6, air, CD, 4x4 King Cab.  
Stk. #P0207  
**REG. \$25,995 ~ SALE \$24,800**

**1998 MAZDA PROTEGE LX**  
Red, auto., air, touring, P/C tint.  
Stk. #P0180  
**REG. \$14,695 ~ SALE \$13,300**

**2000 MAZDA PROTEGE**  
Black, auto, air con., CD, one owner, lease return.  
Stk. #P0195  
**REG. \$15,595 ~ SALE \$13,900**

**1998 MAZDA MPV LX**  
Beige, auto., loaded, 8 pass. Stk. #P0226  
**REG. \$16,795 ~ SALE \$15,600**

**2000 HONDA CIVIC EX**  
Maroon, auto., air, PW/PM/PL, ABS, Cass.  
4 door. Stk. #P0235  
**REG. \$18,995 ~ SALE \$17,900**

**2000 MAZDA MILLENIA S**  
Green, auto., leather, roof, alloys, loaded,  
V6, traction. Stk. #P0217  
**REG. \$26,995 ~ SALE \$25,500**

**1999 TOYOTA COROLLA VE**  
Black, auto, air con. St. #P0187  
**REG. \$15,595 ~ SALE \$13,300**

**2000 HONDA CIVIC SE**  
Silver, auto., air cond., cass. keyless.  
Stk. #W2407A  
**REG. \$16,995 ~ SALE \$15,900**

**1999 VOLKS GOLF VR5 GTI**  
Silver, 5 spd., leather, roof, alloys, loaded,  
keyless, alarm, 6 cyl. Stk. #D5237A  
**REG. \$25,695 ~ SALE \$23,900**

**1999 VOLVO S70**  
Blue, auto., loaded, leather, CD,  
woodgrain dash. Stk. #P0208  
**REG. \$24,995 ~ SALE \$23,600**

**2001 TOYOTA COROLLA**  
Silver, auto., PL/PB, air cond., keyless  
entry. Stk. #P0223  
**REG. \$15,995 ~ SALE \$14,500**

**2000 HONDA CIVIC SE**  
Red, auto, air, AM/FM, cass., p/locks, 2 dr.,  
ABS. Stk. #D2334A  
**REG. \$17,995 ~ SALE \$16,800**

**1998 NISSAN SENTRA**  
Black, 5 spd., cass., PS, PB, warranty.  
Stk. #P0177  
**REG. \$11,995 ~ SALE \$9,500**

**1998 NISSAN SENTRA**  
Silver, auto., air, cass, warr. Stk. #P0179  
**REG. \$13,595 ~ SALE \$11,900**

**1998 MAZDA B3000**  
Green, 5 spd., ext. cab, bedliner, lease  
return. Stk. #P0230  
**REG. \$13,995 ~ SALE \$12,900**

**1998 HONDA CIVIC EX**  
Black, PWR wind., air, PM, ABS, keyless,  
alarm, 5 spd. Stk. #D2219A  
**REG. \$14,595 ~ SALE \$12,900**

**1998 GMC JIMMY SLE**  
White, 4x4, air, lock windows, loaded  
Stk. # P0198  
**REG. \$19,695 ~ SALE \$17,900**

**1998 MAZDA 626**  
Blue, auto., 2.0L, air, cass, PM. Stk. #P0201  
**REG. \$15,995 ~ SALE \$13,900**

**1998 ISUZU RODEO 4x4**  
Teal, auto., V8, loaded, PW/PH/PL, keyless entry.  
Stk. #P0204  
**REG. \$19,695 ~ SALE \$17,800**

**1998 MERCEDES ML320**  
White, auto., loaded, moon roof, leather.  
Stk. #P0211  
**REG. \$33,995 ~ SALE \$31,800**

5396 Hwy #7  
**294-1210**  
Markham

Extended  
Hours:  
Wed until 9 pm  
Sat until 1pm