

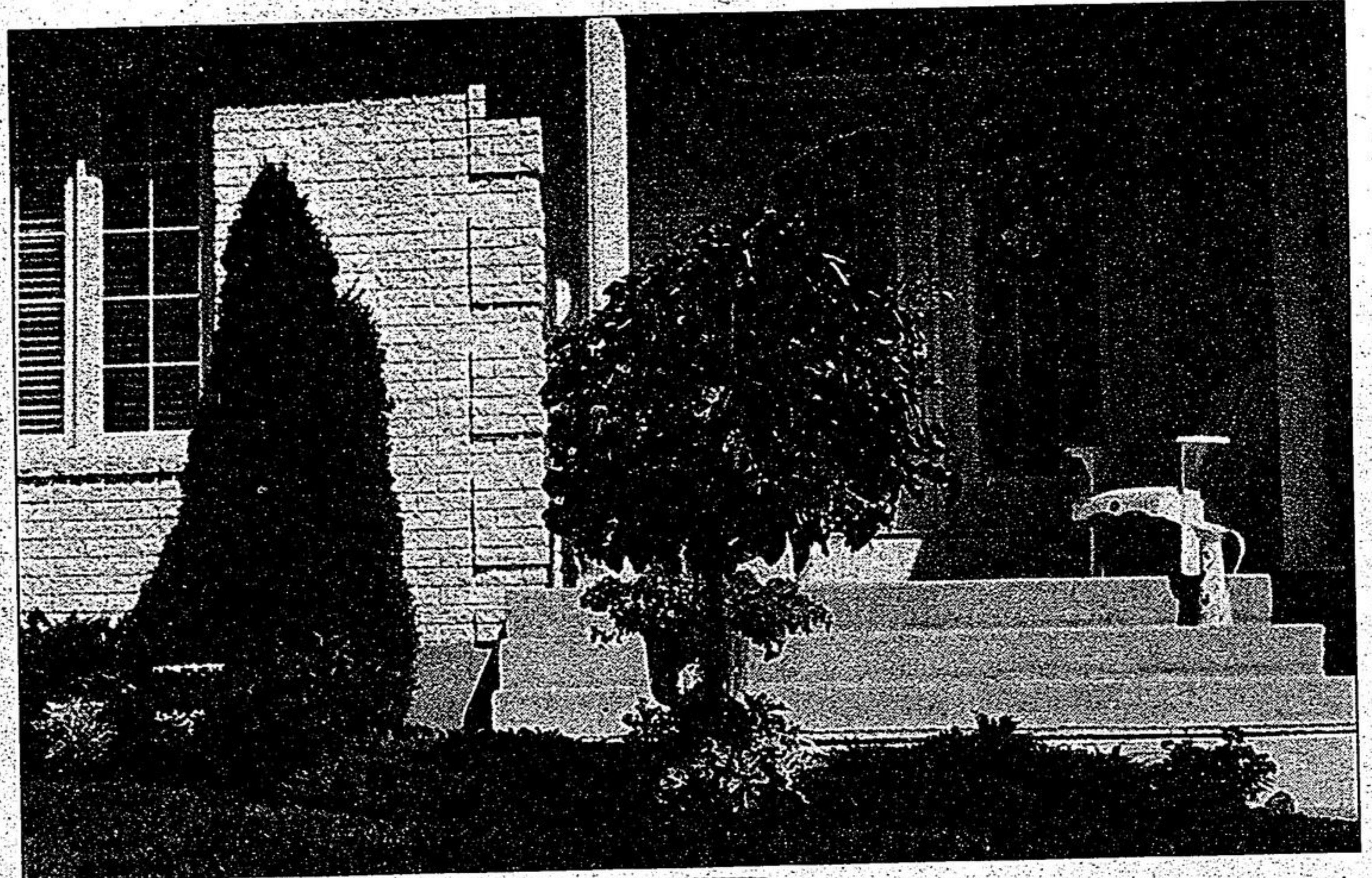
TOTAL HOME

Advertising Feature of The Markham Economist & Sun/Stouffville Tribune

Looking Good!

In addition to adding a decorative element to your yard, evergreens will protect your home from the cold winter winds while deciduous trees will protect it from the sun's hot rays during the summer.

Tips for trees and shrubs



Remember all those math classes you took as a child in school? Remember wondering, "When will I ever use this stuff?"

Well, the time has finally arrived because when it comes to choosing a tree or shrub, there are a lot of calculations involved. So get out your calculators, it's time to do some planting!

If you have an enormous yard and will only be planting a few trees, space won't be an issue. But if your property is smaller, you will need to calculate the exact dimensions of the area in which you want to plant a tree, since some species have a tendency to grow, and grow, and grow!

You also need to consider where this new tree will be planted. For the north side of your home, stick to evergreens such as firs, pines and cedars, which will protect your home from the cold winter winds. For the south side of your home, deciduous trees are a better choice. Poplars, oaks and apple trees will protect your home from the hot sun during the summer, but let its warmth reach your home during the winter.

Most trees have deep roots that allow any surrounding plants to benefit from the supply of water and nutrients found in the soil closer to the surface. Other trees, however, such as the blue spruce, balsam fir and trembling aspen, have superficial roots that will absorb the water and nutrients found on the soil's surface.

To attract birds, plant a rose-bloom crab tree, cherry tree, hawthorn or Saskatoon berry. As for shrubs, a fire thorn, buck-brush, arrowwood, gooseberry, dogwood, honeysuckle or holly will also attract these feathery friends in addition to adding a decorative note to your yard.

SOD now available plus 14" Wire Moss Baskets while quantity lasts!

CEDARGROVE GREENHOUSES

Buy Direct from your local Grower!

NOW OPEN for the 2002 Season

Thousands & Thousands of assorted Hanging Baskets, Wall Bags, Box Plants & asst'd patio pots and deluxe baskets Plus 4" Pots and Top Soil

Open 7 Days a Week

Mon.-Fri. 8:30am - 8 pm

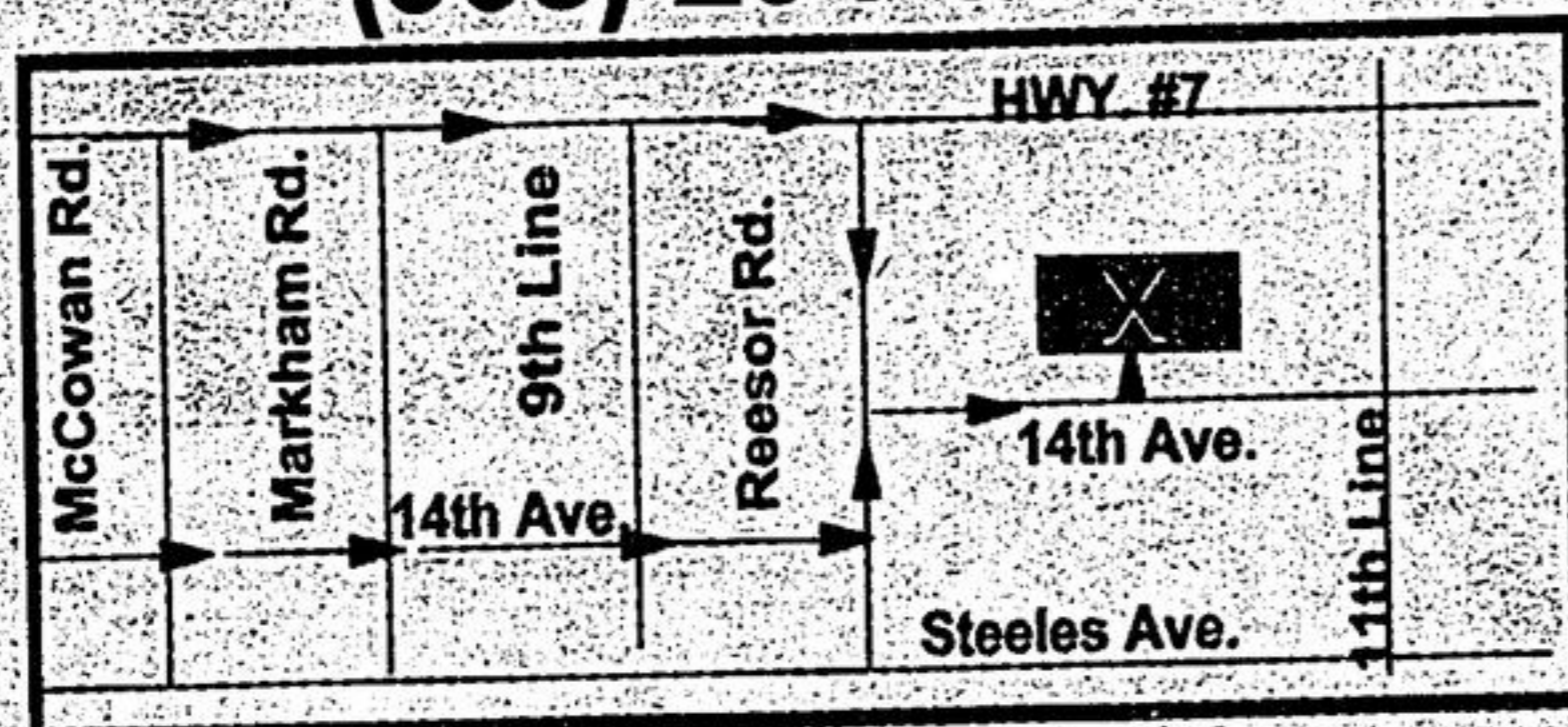
Sat. 8am - 6pm

Sun. 9am - 5pm

7702 - 14th Ave.,

South of Hwy #7, Markham

(905) 294-5917



OPEN TO THE PUBLIC

Whittamore's FARM

OPEN DAILY 9AM-7PM

ASPARAGUS - Delight your Mother with the fresh taste of spring pickings fresh daily from our farm.

RHUBARB - Another staple of Spring, great for stewing or in compotes fresh daily.

GARDEN PLANTS - Our unique & beautiful mixed hanging baskets & pots would make a special Mother's Day Gift. Also fresh cut flowers.

BAKESHOP & WINERY - Enjoy one of our home baked **FRUIT PIES** and other baked goods. Come in and sample some of our newest wine creations for 2002. Visit with our winemaker and take home a bottle of our award winning **FRUIT, GRAPE and ICE WINES.**

RHUBARB \$9.95 750 ml Bottle

Table Wine

Strawberries start in about 5 to 6 weeks.

8100 STEELES AVE E. (MARKHAM)
905-294-3275 for Daily Farm Update or
www.whittamoresfarm.com

Centennial Celebration

Come Celebrate with us!
 Receive a Spring Rebate and save all summer on your utility bills!

Receive up to **\$600** Mail-In Rebate

Contact your participating Carrier dealer for details.

Some conditions apply. Factory rebate cannot be combined with any other offer. Offer valid until May 31, 2002. Mail-in rebate.



up to \$600 in Rebates

In addition to energy efficiency savings, buy now and receive up to \$600 in a mail-in-rebate!



Contract a Participating Carrier Dealer for Details. Offer expires May 31, 2002.

PINEWOOD

HEATING & AIR CONDITIONING LTD.

Visit our showroom
 250 Cochrane Dr., Unit #7, Markham
 905-479-0542