

MARY ANNE ★ RE/MAX CLASSIC PROPERTIES ★ MARY ANNE ★ RE/MAX CLASSIC PROPERTIES ★ MARY ANNE ★ RE/MAX CLASSIC PROPERTIES ★ MARY ANNE

...just Mary Anne!

...just personal one-on-one service from Mary Anne Macdonald and the RE/MAX support organization from the moment you decide to make a move!



Mary Anne Macdonald

Registered Relocation Specialist

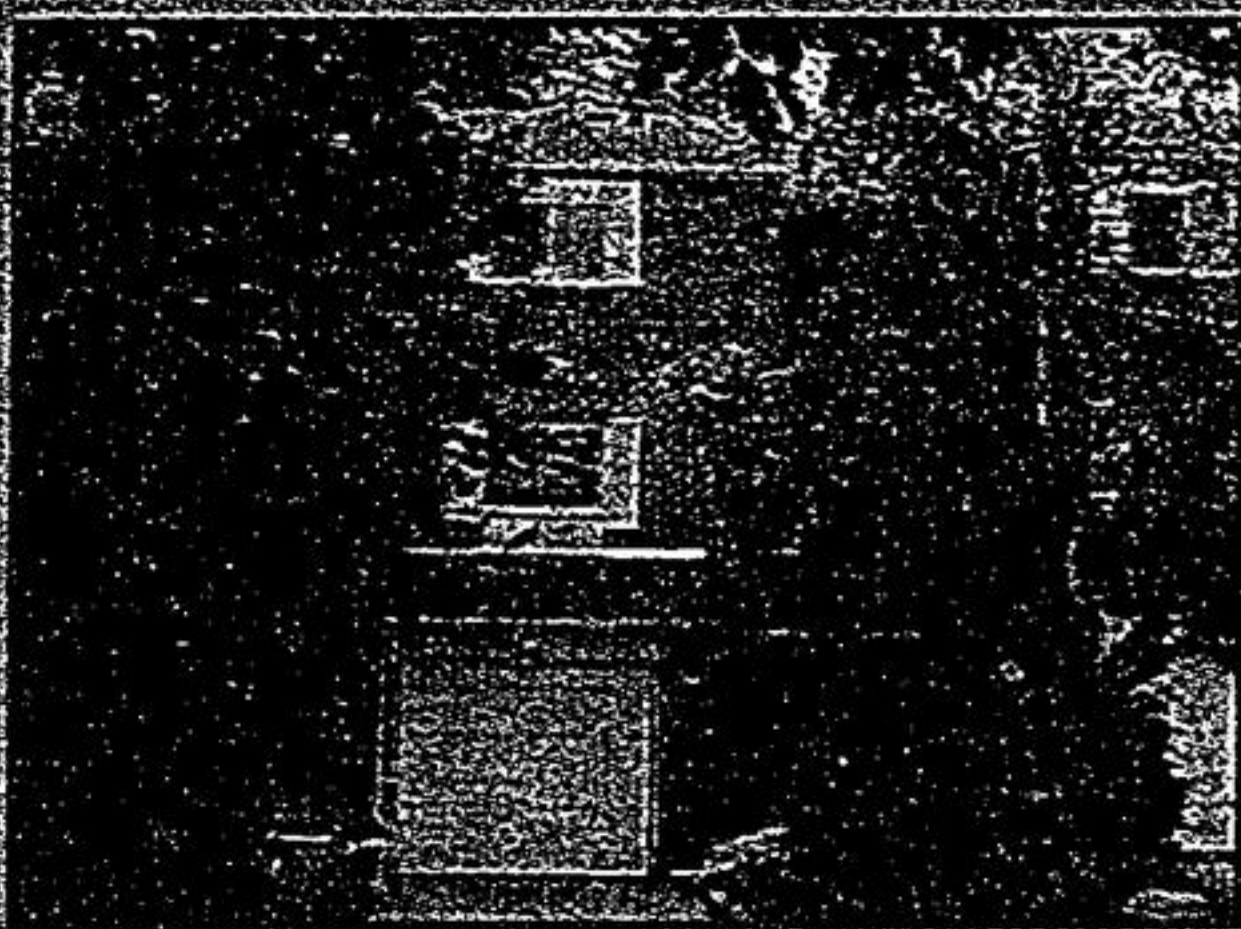
I specialize in you! 905-947-9300



NEW LISTING!

Bridle Trail

- Monarch 4 bedroom
- "John Stiver" 2800 sq ft
- Bright Solarium
- Immaculate Condition



SPACIOUS TOWNHOME!

Unionville

- Private Rear Garden
- 3 Spacious bedrooms
- Large eat-in kitchen
- Family rm with walkout



BUILD YOUR DREAM HOME

Unionville Lot

- Steps to Toogood Pond
- 107 ft frontage
- Cottage on property may be demolished

Smith & Emily Welcome Home
It's great to have you
back in Brampton!

Jim & Megan
Much happiness in your new
home in Chambers

Stephanie & Ken
Enjoy your new home in Swan Lake
Much Happiness!

Garth & Hilr
Welcome to Unionville! Enjoy your new
home in SW

Summer & Jimmy
My best wishes on your
new home in Unionville

Caroline & Andrew
It's a wonderful feeling welcoming you home
Enjoy your new home!



RE/MAX Classic Properties Inc. 905-947-9300

Simplify Your Search - www.maryannemacdonald.com

RE/MAX CLASSIC
PROPERTIES, INC.
947-9300



MARY ANNE ★ RE/MAX CLASSIC PROPERTIES ★ MARY ANNE ★ RE/MAX CLASSIC PROPERTIES ★ MARY ANNE ★ RE/MAX CLASSIC PROPERTIES ★ MARY ANNE

Feature Home of the Week

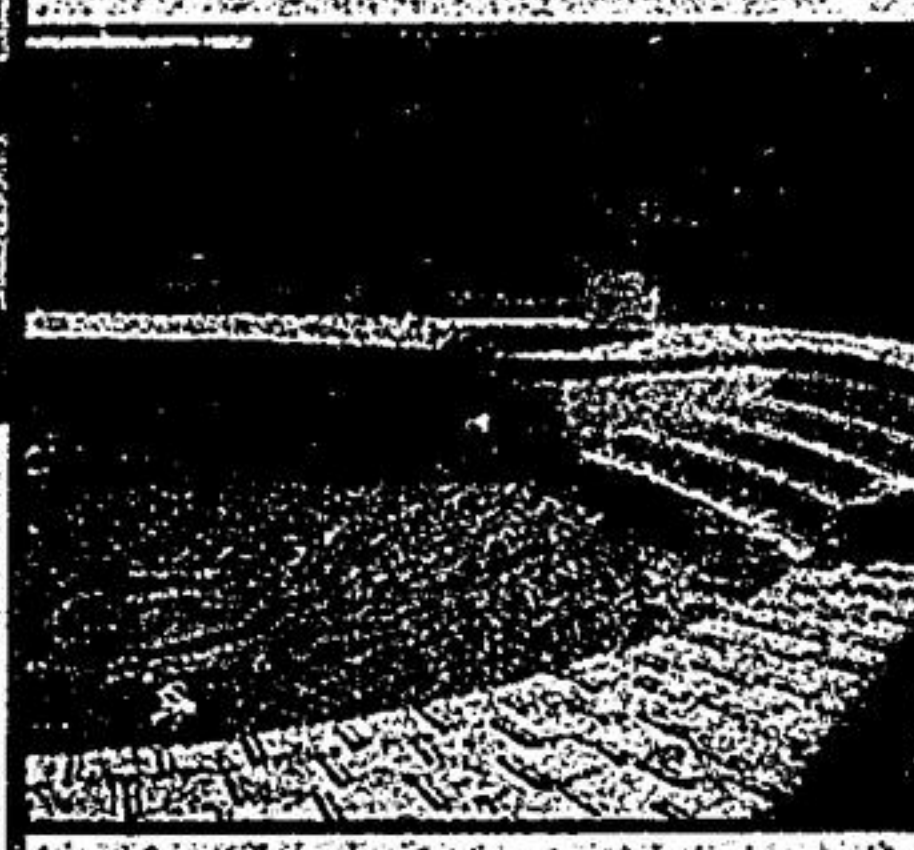
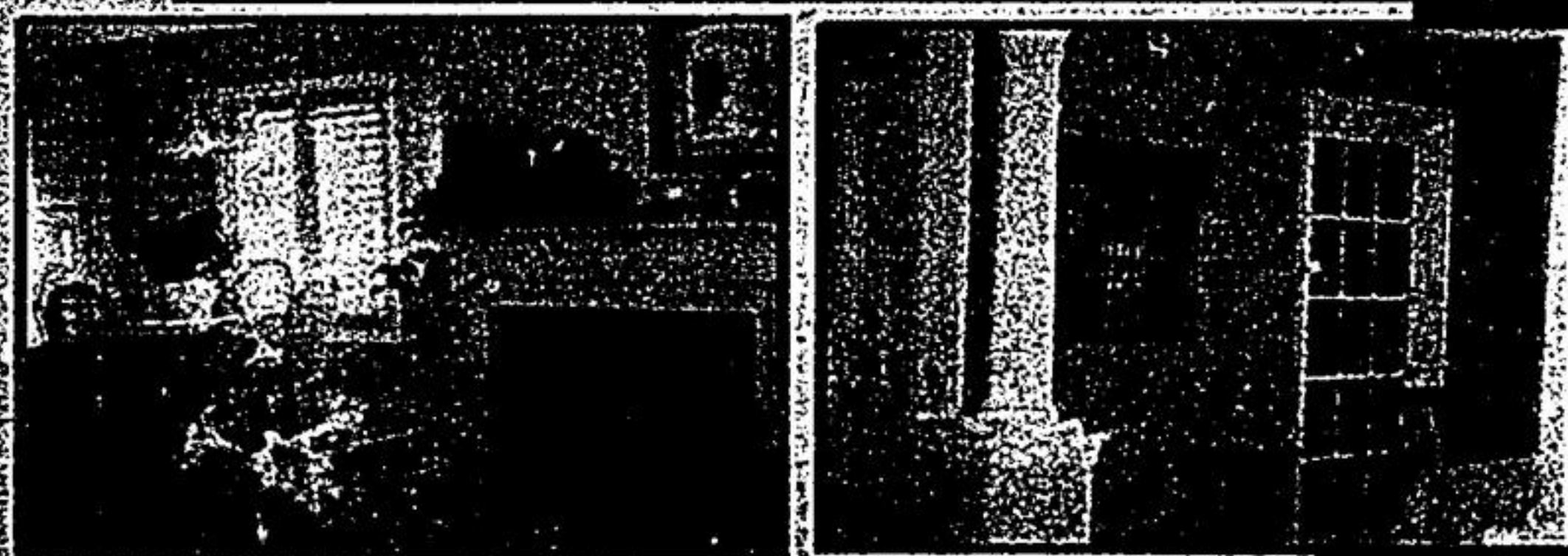


3 Wood Thrush Avenue

Open House Sunday 2-4

Opportunity is knocking! Syndical 2 yr. new model home. 4 bedroom, 3 bathroom, open concept family rm/kitchen. Professional landscaped

interlock, new heated pool, \$\$\$ sent on up to parks, pond, golf. Call Alanna English at 407/404.



For more information or a personal tour of this beautiful home, please call Alanna English - 905-947-9300
aenglish@trebna.com



Alanna English



RE/MAX CLASSIC

PROPERTIES, INC.
947-9300