



Markham
Stouffville
Hospital

38 Church Street, P.O. Box 1800
Markham, Ontario, L3P 7P3

905-472-7000

Visit our new site at
www.msh.on.ca

VITALITY



Markham Stouffville
Hospital Foundation

Upcoming Events:

• **What's New in Diabetes Care?**
Thursday, May 31, 2001, 7:00-9:00 p.m., Hospital Auditorium

• **Seminar on Grief: June 1, 2001, Chapel Ridge Funeral Home, 8911 Woodbine Ave., Markham 7:30 a.m. - 12:00 noon.**
To register, call (905) 305-8508.

• **Hip Hip Hooray Walk: June 10, 2001, registration at 9:30 a.m., walk at 11:00 a.m., at Richmond Green Community Centre.**

• **Bill Hood Annual Cornfield Shindig: June 23, 2001, Markham Fair Grounds.**

• **MSH Foundation Annual Golf Tournament: August 23, 2001, York Downs Golf and Country Club.**

• **Fashion for Life Fashion Show: Friends of Markham Stouffville Hospital: October 3, 2001**

• **Department of Family Practice Community Event: October 9, 2001, 7:00-8:00 p.m., Hospital Auditorium**

• **"Body & Soul" Concert: Joint Fundraiser with Markham Theatre: November 22, 2001.**

• **Donor Recognition Event: November 29, 2001, MSH Main Lobby.**

What's New

Infant Hearing Screening and Communication Development Program

The Infant Hearing Screening and Communication Development Program was announced in the Ontario Government's 2000 Budget, with guidelines released at the end of March 2001.

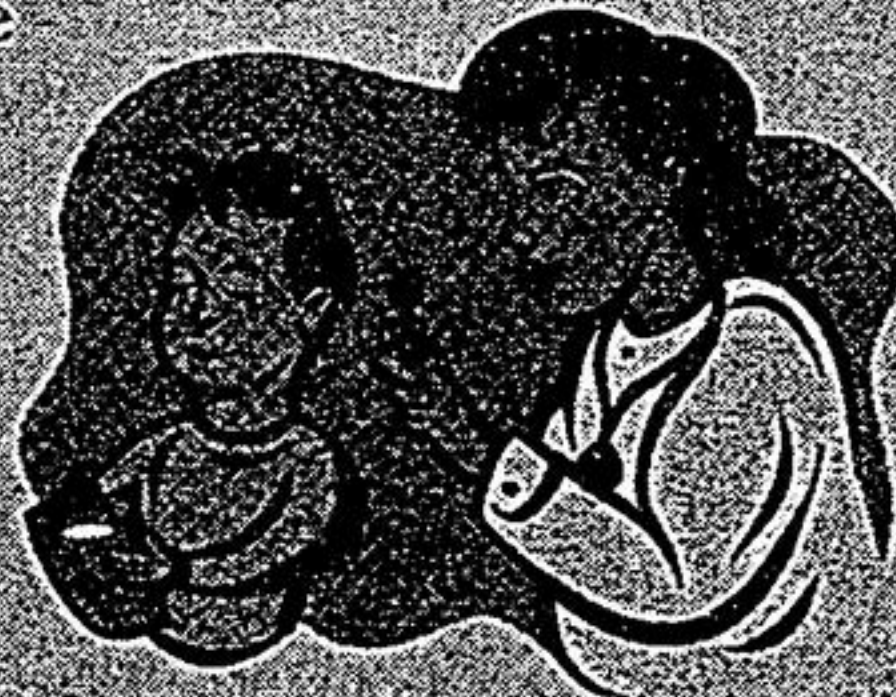
Markham Stouffville Hospital, York Region Preschool Speech and Language Program has been chosen to be the lead agency for this initiative for York, Durham, Haliburton, Kawartha and Peterborough regions.

The goals of this program are to provide an integrated system of services that will:

1. Identify infants born deaf or hard of hearing or at risk for developing hearing loss in early childhood and
2. Provide child and family centered services to support communication development.

The program has three major components:

1. Universal Hearing Screening (2 stages)
2. Hearing Loss Confirmation and Audiologic Assessment
3. Follow up Support and Services



Universal Screening

Three different methods of providing the screening component will be developed in each region:

1. Screening of High Risk Babies: Hospital Special Care Nursery/Discharge Screening
2. Screening of Healthy Newborns: Healthy Babies, Healthy Children Postpartum Home Visit Screening
3. Community Screening

Assessment

All babies who received a "refer" result from the Stage 2 screening will be sent to an audiologist for assessment. The assessment is to be completed no more than 4 weeks from the time of referral. All babies with a confirmed hearing loss will be referred to an otolaryngologist with paediatric experience.

Follow Up Support and Services

It is the policy of the Infant Hearing program that parents of babies identified as deaf or hard of hearing will have access to unbiased information on all methods of communication available to their child. It will be the decision of the parents as to what method(s) of communication their child will use and it will be a fully informed choice.

Hearing Aid Selection

The system will be designed so that the baby is fitted with a hearing aid as soon as possible, but preferably no later than 6 months of age.

Communication Development

The goal will be to provide access to auditory-verbal therapy or sign language as close to the child's home as reasonably possible. Training will be made available through the Infant Hearing program for staff of the local Preschool Speech and Language Programs in both sign language and auditory verbal therapy.

In order to effectively develop this program to meet the needs of these regions, YRPSLP will be hiring a Clinical Manager for this initiative. We will be developing our local protocols over the spring and summer and hope to launch our program in the fall, 2001.

Markham Stouffville Hospital Future Growth and Development Update

In the March issue of Vitality, we provided an overview of the growth and demographic changes our community will face in the next few years and its impact on the hospital. As a result, MSH is currently working on a hospital expansion plan. The purpose of the expansion plan is to meet the future hospital care needs of our communities.

The first phase of this plan is the completion of functional programming. Functional Programming is a planning process, which outlines the future role of an organization and the scope of services it will provide.

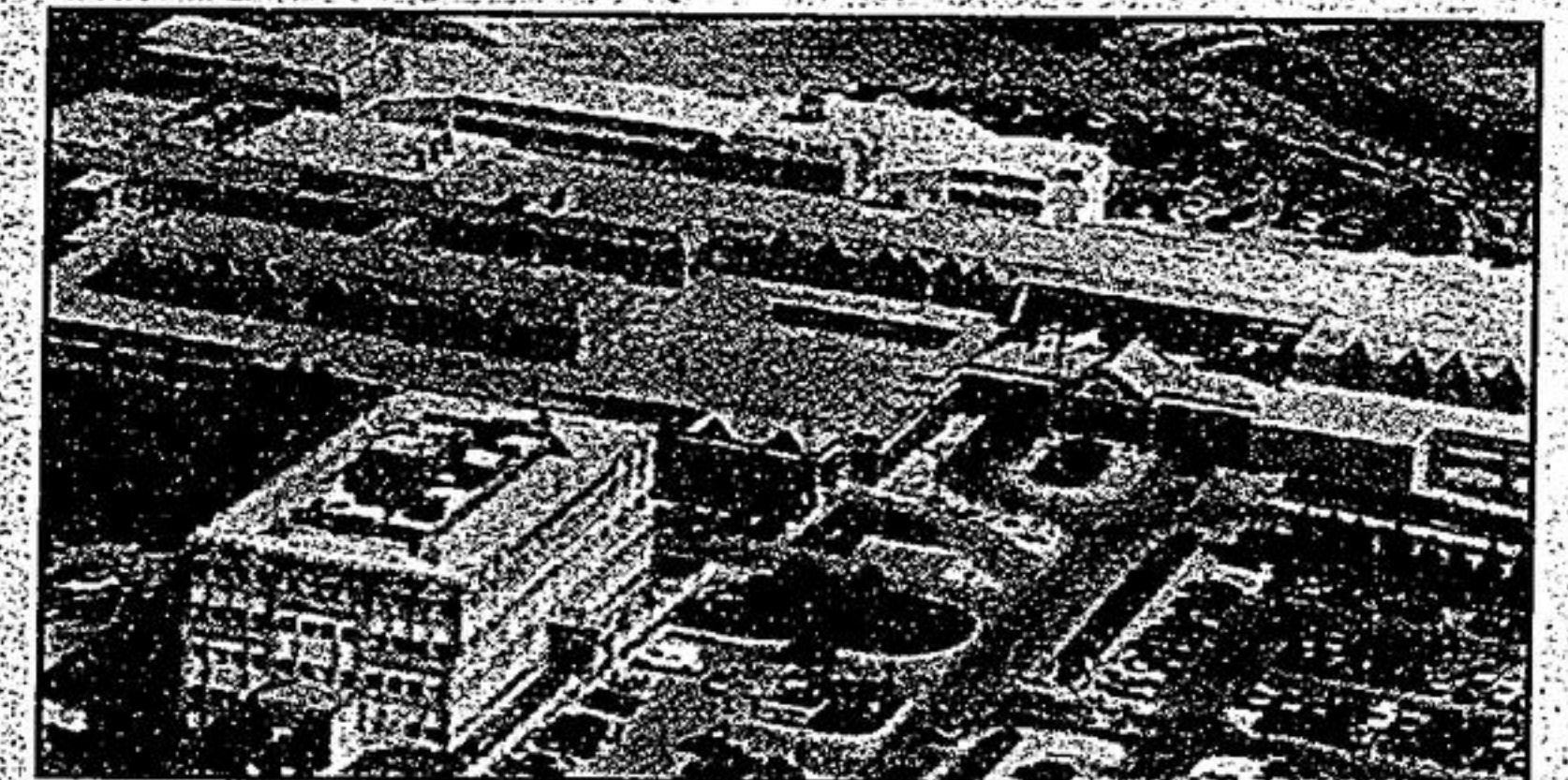
Currently, each system within the hospital is actively developing functional plans for their areas. This entails:

- Planning their future scope of services, staff, operational and physical requirements
- Collaborating across the hospital to ensure that services and programs are integrated.
- Allowing for flexibility within their plans to adapt to potential future changes.

It is an exciting yet, challenging process to undertake.

Once the functional programs are completed, the plans will be translated into architectural designs and a master plan will be developed.

MSH is targeting to finalize and submit its master plan to the Ministry of Health and Long Term Care this fall.



Markham Stouffville Hospital Foundation News

Equipment Club purchases enhance the quality of care

In an effort to further recognize the generosity of our donors we developed the "Friends of the Foundation Equipment Club"

The "Equipment Club" is an opportunity to be part of a small group of Foundation friends whose donations are able to purchase a specific, much-needed piece of equipment for the Hospital.

We wish to express our sincere appreciation for the generosity of the following "Friends of the Foundation" whose donations went towards purchasing the following pieces of equipment:

Anaesthetic Monitoring Package

Essential monitoring equipment used in surgery by the anesthesiologist to monitor the patient's vital signs including the blood pressure, oxygen levels and cardiac rhythm.

- Hazel Anderson
- John Baird
- Bernice Bowers
- Molly Hood
- Robert Kirby

Mobile X-Ray Unit

This is a small portable x-ray unit that is used to take x-rays of bones, abdomen and the chest of patients that can not be moved to the Diagnostic Imaging area.

- Bernice Bowers

ENT Drill

This piece of equipment is used during ear surgery to drill bone to allow the doctor to replace the tiny bones, remove infectious material and improve hearing.

- Russell Beare
- Peter & Marianne Gaettens
- Rick & Michelle Keilhauer
- Tom & Irene Shadlock

For more information on the Equipment Club please contact Jan Black at 905-472-7394.

Community Events

We are fast approaching the 4th Annual Cornfield Shindig, to be held on Saturday June 23rd at Markham Fairgrounds. This is an annual community fundraising event held in memory of Bill Hood.

The day will consist of a full schedule of family fun including: Horse Drawn Hay rides, Winnie the Pooh, Arthur & DW, a food court, scooter course and much more!

Tickets are \$5.00 each with all of the proceeds going to the Markham Stouffville Hospital. For more information call the Shindig Hotline at (905) 472-7373 ext #3777.

Volunteers are required to assist with activities, parking control and various other activities throughout the day. These positions are suitable for high school students or adults. The deadline for volunteers is Friday June 8th, 2001.

If you would like to volunteer your time, please contact Kathy Downes at (905) 472-7395 or you can e-mail her at kdownes@msh.on.ca.