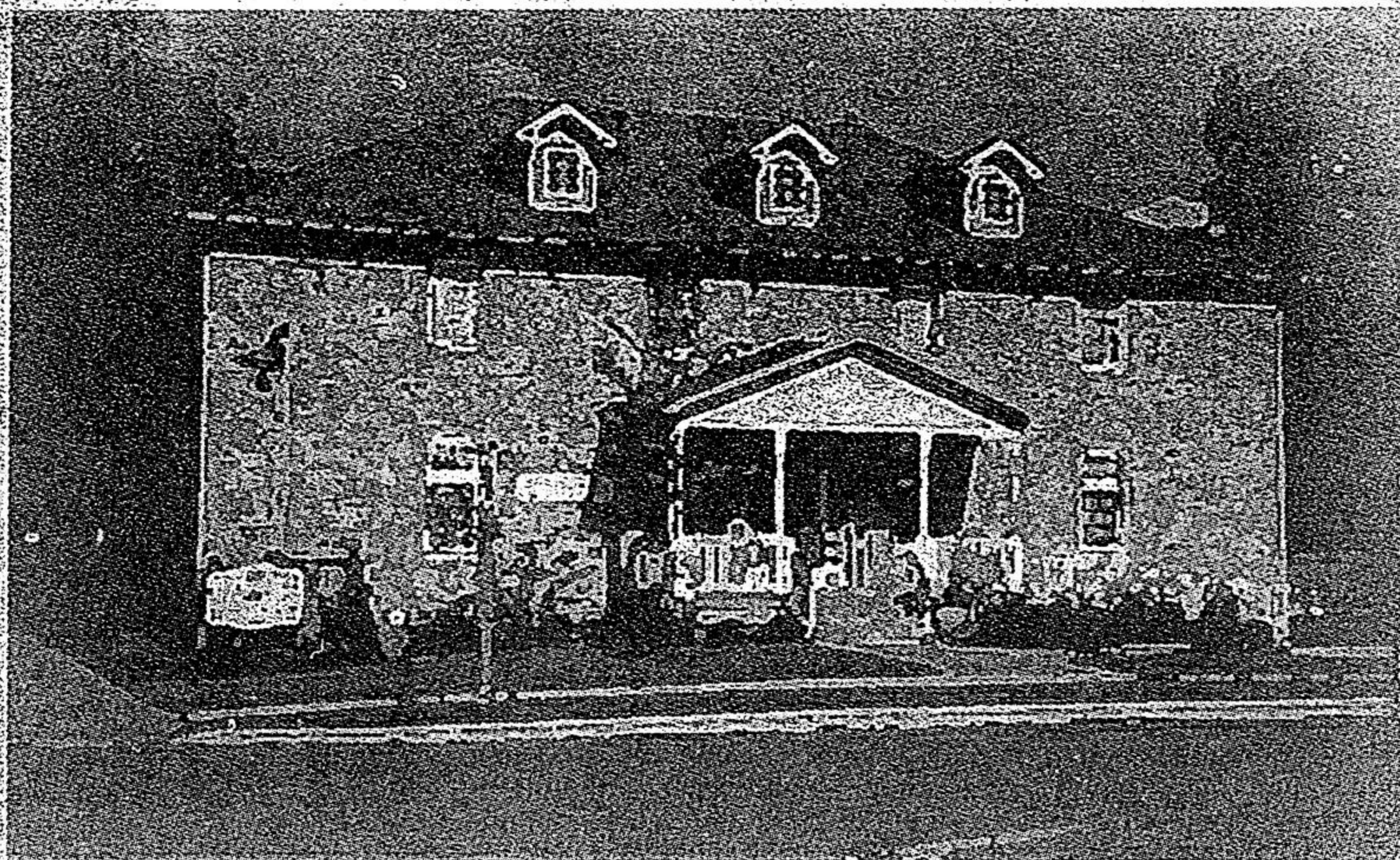


Thank You Whitchurch-Stouffville!!



We would like to thank the readers of Whitchurch-Stouffville for selecting us as your favourite investment company.

We really enjoy being part of the Whitchurch-Stouffville community and are very proud to have such great clients!



The Money Concepts Team

Down-to-earth financial management. Your terms. Your comfort.

MONEY CONCEPTS

Money Concepts Group Capital Corp. and N.F. Insurance Agency Inc.

**6165 Main St.
Stouffville**

(Southeast corner of Main & Albert Streets,
Just West of the Train Station)

642-4540

E-Mail: stouffville@moneyconcepts.com / Fax: 642-4537
Website: www.moneyconceptsstouffville.ca

Area hospitals insist health care under siege

BY LISA QUEEN
Staff Writer

The presidents of two York Region hospitals are discounting a report that says enemies of medicare are creating the perception of a health-care system in crisis.

Dan Carriere, president of Southlake Regional Health Care Centre, and Markham Stouffville Hospital president Dr. Jim MacLean are backed up in their beliefs by a nurse on the front lines.

Last Thursday, the Tommy Douglas Research Institute—named in honour of Canada's father of medicare—unveiled a study that says the prevailing sentiment of a health-care system under threat is a huge exaggeration.

The fear-mongering, according to the institute, has been fueled by the media and by factions trying to pave the way for two-tiered health care.

"There is a great deal of money to be made by wrecking medicare," the report said.

"Stories of impending doom now both cloud and shape public debate, making it virtually impossible for a member of the public to get a clear sense of the problems facing medicare, or of the plausible, evidence-based supportable solutions that do exist."

Carriere said Canada still

has one of the best health-care systems in the world, but warned it is under constant threat of under-staffing and under-funding. Problems only compounded in high-growth areas such as York Region.

He's baffled by what he sees as a huge leap in logic by the institute and argued that those who point out flaws in the system in an effort to save health care aren't promoting privatization.

Carriere and veteran Southlake emergency nurse Marilyn Playter have seen first-hand the shortfalls in the health-care system.

Between 10 and 15 beds a day have to be closed at Southlake because the hospital is just one of dozens in Ontario scrambling to recruit new staff.

Meanwhile, the departments of surgery and medicine are routinely filled beyond capacity with patients facing long waiting lists.

"I feel this is a very serious situation. It's not a crisis yet. (But) we're managing at a level that is not sustainable," said Carriere, adding many of Southlake's problems will be solved through the hospital's reconstruction plans.

"If the report is implying that problems in the system

See HOSPITALS page 13.

Stouffville DENTURE CLINIC

Full and Partial Dentures
Same Day Repairs and Relines
Soft Liners

Implant Dentures
Anti-Snoring Appliances

Open Saturdays

Emergencies Welcome 7 Days A Week

FOR YOUR APPOINTMENT

642-4867

Over 200 Mazdas in Stock!

YES, The Tribute Has Arrived

MAZDA
TRIBUTE

(905) 780-9999 11262 YONGE ST. (8 LIGHTS NORTH OF MAJOR MACKENZIE IN RICHMOND HILL)