

Council mulls Elm Road parking restrictions

BY JOAN RANSBERRY
Staff Writer
A move is on to put "No Parking" restrictions on a

section of Elm Road running from Stouffville's Ninth Line to Glad Park. "Something has to be

done," Mayor Wayne Emmerson said at a council meeting on Tuesday. "There's just an horren-

dous amount of traffic. Bus drivers can't get by. There's serious congestion." Traffic problems have

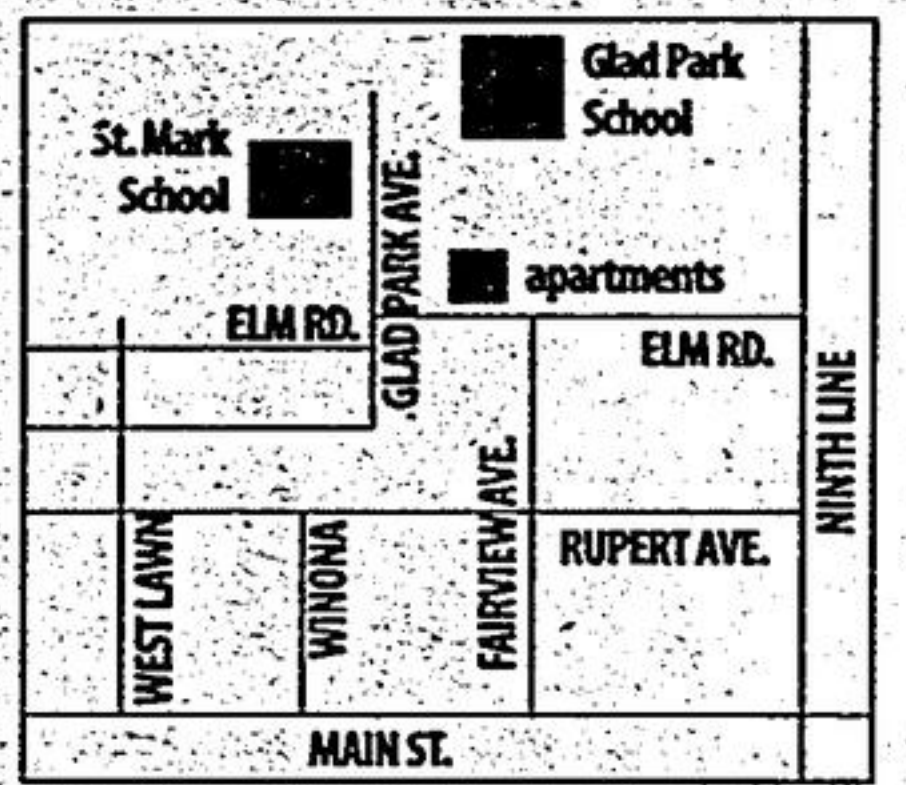
grown worse since Glad Park Public School was built, he noted.

As well, a 51-unit apartment building, St. Mark Catholic School and the church are all in the area. Adding yet another school has created a serious traffic situation, Emmerson stressed.

Ward 4 councillor Cliff Dunkeld told council that recently he carried out a 20-minute traffic count in the Elm Road area. "I counted 180 cars and 16 school buses," he said.

Public Works director Paul Whitehouse reported this section of Elm Road has become "heavily traveled during the time before and after school." He added,

"The traffic created by school buses and parents driving children to and from school sometimes congests the road to a point where traffic is backed up to Ninth



Line." Whitehouse is recommending a tow-away zone be established on Elm Road along with the "No Parking" signs.

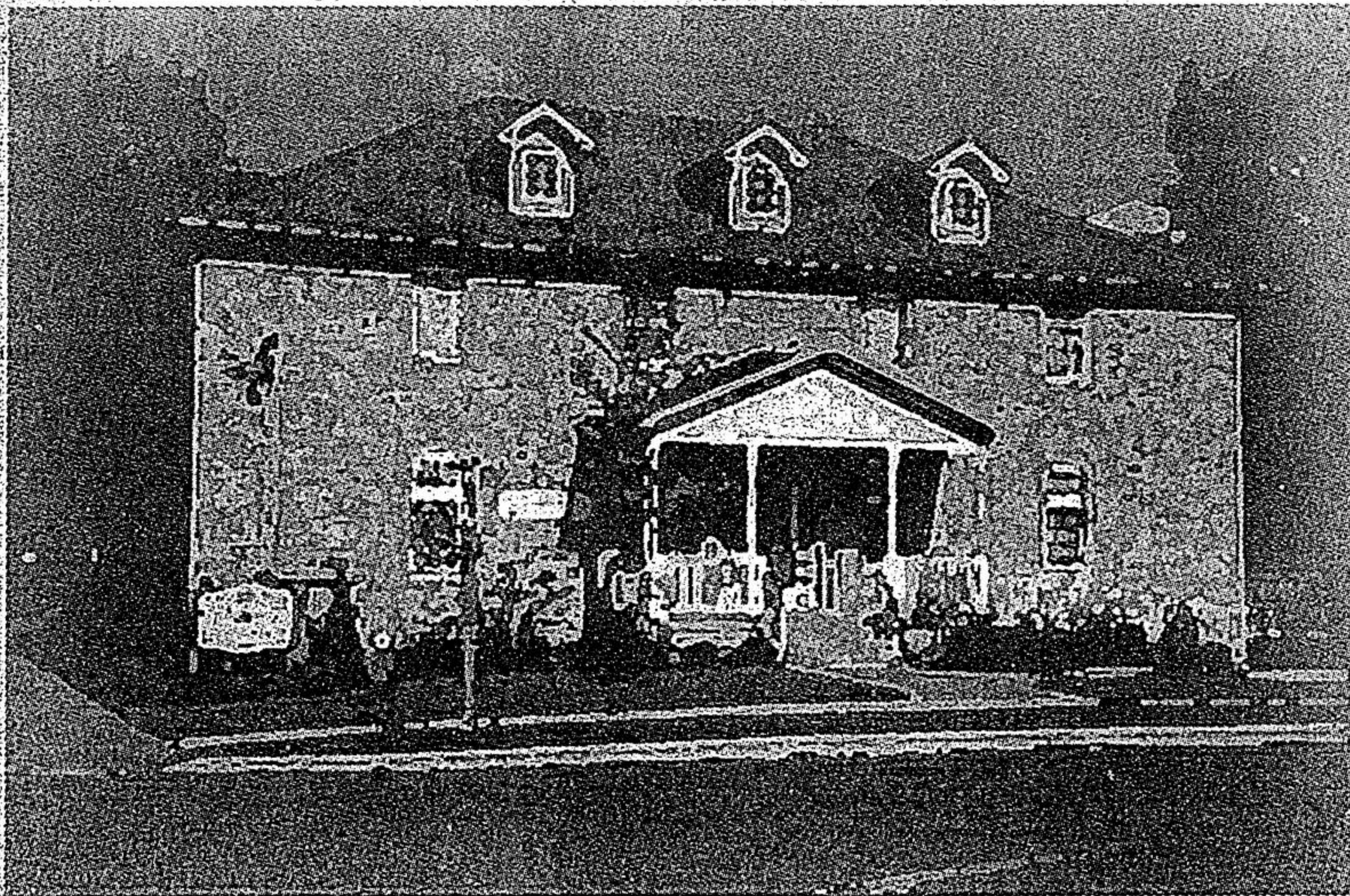
To aggravate the flow of traffic, there's a recurrence of parked cars on the north side of the street in front of the apartment building, Whitehouse reported.

"During the winter months, the maintenance of the road becomes very difficult due to the parked cars," Whitehouse added.

Council will vote on the recommendations Feb. 6.

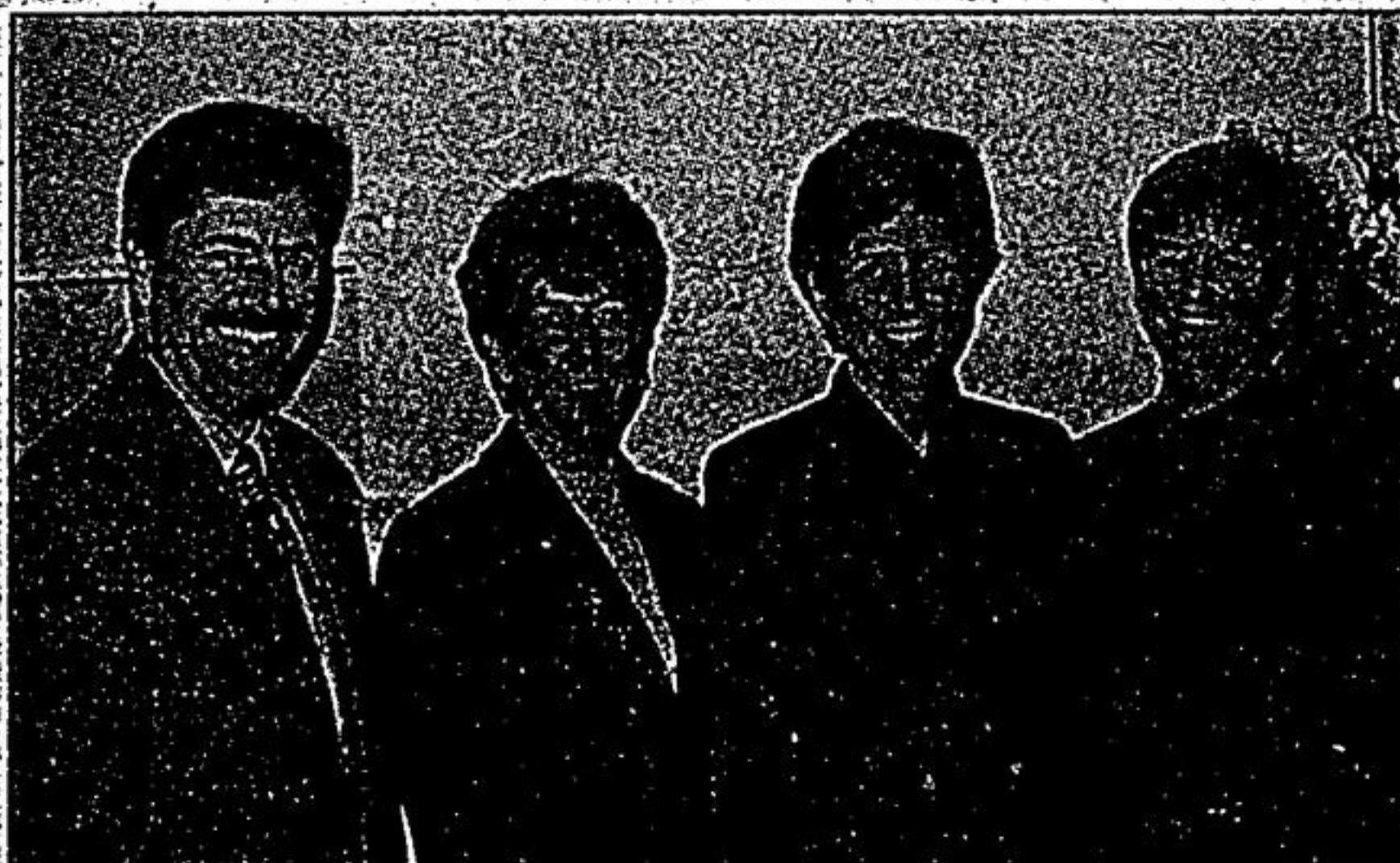
You have so many choices for your RRSP.

Choosing Money Concepts will make it easier.



Money Concepts - Stouffville

Visit our new website: www.moneyconceptsstouffville.ca
We'd be pleased to help you with your RRSP or any other investment needs.
Please give us a call at 642-4540, if we could be of assistance.



Paul Bailey, Carol Clements, Signy Lawson and Sandy Parsons.

Down-to-earth financial management. Your terms. Your comfort.

MONEY CONCEPTS

Money Concepts Group Capital Corp. and N.F. Insurance Agency Inc.

**6165 Main St.
Stouffville**

(Southeast corner of Main & Albert Streets,
Just West of the Train Station)

642-4540

E-Mail: stouffville@moneycpts.com / Fax: 642-4537
Website: www.moneyconceptsstouffville.ca

SDSS students will pay to park

BY JOAN RANSBERRY
Staff Writer

A \$50 annual parking fee is being slapped on students driving vehicles to Stouffville District Secondary School (SDSS).

The fee will be paid twice a year: \$25 in the beginning of each of the two semesters. "It works out to 25 cents a day," SDSS principal Tony Lewis explained. He said the reason for a parking charge is to raise funds for the school and help send students to conferences. As well, a paid parking system will enable Lewis to keep better tabs on the parking lot.

"I want to know what's going on in our lot," he said. "With this I have better con-

trol. If I get an obnoxious driver who nearly kills somebody, I can revoke the parking ticket," said Lewis.

The parking fee system will also keep non-students off the property, Lewis added.

While not a common practice, a few Ontario schools have introduced a similar system.

"Some charge \$5 while others charge \$100," said Lewis.

"Students can afford a parking fee. If they can afford to drive, they can afford this. It works out to 25 cents a day. I'd like to point out that it costs \$2 and change to buy a coffee and a donut."

The parking permits will be available in early February.

Stouffville

DENTURE CLINIC

Full and Partial Dentures
Same Day Repairs and Relines
Soft Liners

Implant Dentures
Anti-Snoring Appliances

Open Saturdays

Emergencies Welcome 7 Days A Week

FOR YOUR APPOINTMENT

642-4867