

GALLO

REAL ESTATE LTD
REALTOR

Est.

1975

We work for you.

905-640-1200



27 ACRES! POND! \$199,900
Southern exposure! Large Pond!
Building permits available! Easy
access to 404! Sit on paved road!
Call Kim Reesor, (905) 640-1200



SOUGHT AFTER LOCATION
All the bells & whistles! 4 finished
floors - 3 gas fireplaces - 6 bedrooms
- 5 baths! Updated carpet - Central air
- Cent. Vac! Wrap around porch
Mature landscaping - Walk to school
Park - GO Train! \$389,900.
Call Kim Reesor, (905) 640-1200.



COUNTRY LIVING \$195,000
Spacious 3-bedroom! Country kitchen!
Fin Rec Rm/Wel bar - 2 Baths
Oversized garage - Minutes to Stouffville
Call Kim Reesor, 640-1200.



ALMIRA - \$499,900
SOLD! Call for free evaluation!
Kim Reesor
Top Producer!
905-640-1200



GOOD HOME - GOOD NEIGHBOURS
Quiet cul-de-sac
Larger than it looks! 3 spacious
bdrms, 3 Ba., Rec. Rm, w/fpl.,
Private fenced yard & entertainment
sized deck! Buy today - Profit
tomorrow! For your personal tour
Pls call Norma Card - 640-1200



INCOME PROPERTY!
36,000 sq. ft. plaza - 7 stores plus 20
apartments - \$360,000 gross income.
Located north end of Newmarket
\$1,900,000. Call Joseph or Ross
Gallo, 905-640-1200.



PRESTIGIOUS JENNINGS GATE!
Custom bld. approx 3500 sq ft
w/walkout fin bsmt • 4 renovated
baths • Custom kitchen • 3
fireplaces • Manicured L • 4 acres
\$688,000
Call Joseph or Ross Gallo
905-640-1200



CHOOSE YOUR OWN COLOURS
3100 sq. ft. bungalow on 3/4 ac. lot •
Vaulted ceilings • Open concept •
Modern kit • Hardwood flrs • Unique
w/loft \$459,900 Call Joseph or
Ross Gallo, 905-640-1200.



DREAM STARTER \$154,800
Watch the sun set over the lake! 2 beds,
Main utility rm, FAG Furn, C. Air, Laundry,
Big L.R., Floor/Ceiling F.P., Sep. Dining,
A-One Shape!
Call Elaine Hall 905-640-1200



NEED AN APARTMENT
1 Bdrm sep entrance, 3 Bdrm 2 storey
on pretty lot, Attached garage. Near
stores & schools. A must see. Call
Karen Croft at 905-640-1200,
24 Hour Pager.

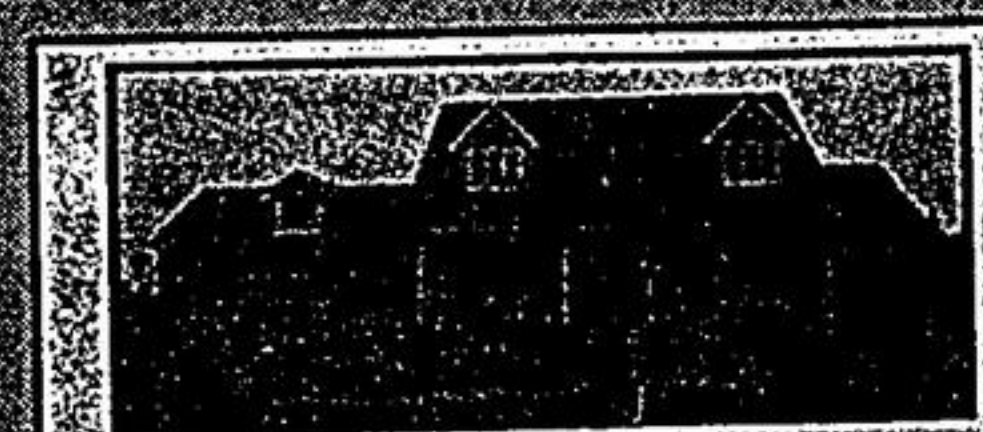


WANT TO BUILD THIS SPRING?
Now's the time to view this wonderful
2 acre estate lot just north of
Unionville. Building permit available.
Out building allowed.
Phone Elaine Kalmbach
for directions! 905-640-1200.

OPPORTUNITY KNOCKS ON MAIN STREET, STOUFFVILLE!

Store for Lease \$1200/mo+ South
facing, Large windows next to busy fabric
S/Sears, Catalogue store. Shelving
available M/F washrms. Private office. See
& Lease with Elaine Kalmbach
905-640-1200.

25 ACRES - JUST LISTED
Treed parcel in Uxbridge.
Building permit available.
Asking \$129,900.
Good terms
Call for details.



TOP QUALITY CUSTOM BUILT NEW HOMES
\$7,500.00 in extras included in purchase
price. 4 bedrooms, 2 1/2 baths, 16' high
ceilings, with large arch windows, w/o
from breakfast area to yard, 100' x 300'
lot in estate area with town water, natural
gas. Purchase price also includes 3/4
hardwood floors in master bdrm and liv.
room, 2 gas fps. Immediate possession.
Come and view with Ross Gallo
905-640-1200



PLAN OF SUBDIVISION, NOW REGISTERED
Maple Park Estates in beautiful
Ballantrae. Convenient to Hwy 48 &
Aurora Rd, across from golf course & 3
paths lead to York Region forest. The
road is complete with first layer of
asphalt. Lots are 1 1/4 acre each with
town water & natural gas. Starting at
\$124,900 - \$30,000 below market value.
For quick sale, call Ross Gallo
905-640-1200

LAND FOR GOLD COURSE?

162 acres with 2 road frontages
located just east of Stouffville.
Gently rolling land with mature trees
and stream. A rare find!
Call Ross Gallo for details,
905-640-1200

INVESTOR OR BUILDER OPPORTUNITY

32 lots, draft plan approved, 1 1/4
acre each with town water and
natural gas. Very close to Stouffville
town. Priced to sell, must be sold as
a package.
Call Ross Gallo for details,
905-640-1200

I HAVE SERIOUS PURCHASERS!

Loving family needs - 4 bedrooms,
main flr family room, walking to
public school - \$260,000 - \$270,000
price range.
Call Gail D. Cavill
905-640-1200

ask Your Friends About Us