

markham
stouffville

realestate

January 15, 2001

Advertising section - published weekly for the Markham Economist & Sun and Stouffville Tribune, a division of Metroland Printing, Publishing and Distribution Ltd.

COME SEE, COME SIGH....



DIANE BROMLEY*
905-470-1951



NEW CHOICE



When you see all the great things about this house - 4 bdrms & the master boasts a soaker tub & sep shower, fabulous hwdw frs, California shutters, 2 fireplaces, direct garage ent from main flr ldr; upgraded kit, loaded w/cupboards & breakfast area. By the way did I mention there is a mn fr family & a sunken retreat on the 2nd flr - could be a 5th bdrm, office or your own private get-away. It's time for you to call to see this great home! **\$309,900**

SUPER BUNGALOW



This home is for empty nesters or first time buyers, with sep. entrance to in-law suite, Warden - Ellesmere area. For more information call Peter or Wilma Willan, 905-947-9300.



PETER & WILMA WILLAN*
"Spouses Who Sell Houses"
(905) 947-9300



Classic Properties Inc.

56 PRIVATE TREED ACRES

JAY LOUGH HAYES*

1-800-567-4546
1-705-743-9111



EASTERN REALTY INC.



"KENNEL FOR SALE"

Operating 12 years + as a breeding and boarding kennel in Peterborough area, 24 large indoor/outdoor covered runs, large, fenced exercise area. Totally renovated 3 bedroom ranch bungalow with attached double garage, **\$269,500**. View photos at www.homesinpeterborough.com. Call Jay Lough Hayes.

SPECTACULAR HOME WITH ULTIMATE IN-LAW or PERFECT FOR OUT OF TOWN BUSINESS GUESTS



Custom Built, Elegant Executive Home Approx. 4000 sq. ft. with Finished Bsmt. and Inground Pool all on a Beautifully Landscaped Acre. Plus Custom Designed Private Suite over Four Car Garage. \$100,000 Meeting / Sun Room Addition, Separate Living / Dining Areas, One Bedroom with Ensuite, Separate Laundry and Entrance. Imagine the possibilities!!!



Michele & Frank Jago*



Your Community Realty

Markham (905) 940-4180
Stouffville (905) 642-6333
e-mail: mjago@trebnet.com

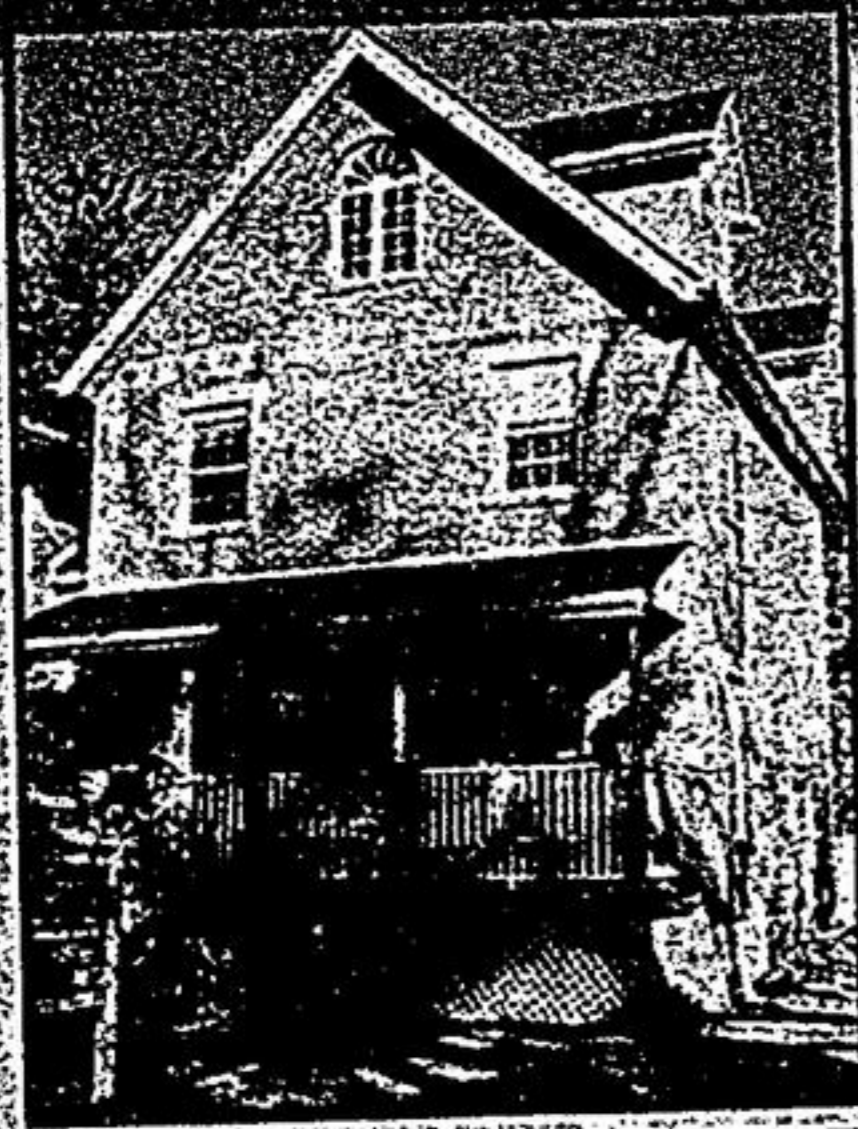
ONE OF A KIND!



Karen MacDonald*
A Trusted Name in Real Estate
(905) 471-2121



Leading Edge Realty Inc.



A rare opportunity to own a home with the ambience of "old" and the conveniences offered in new homes. Steps to schools, parks, library, shopping and Go Train, rich in detail and beautifully appointed. 4 finished levels, hardwood floors, 9' 1/2" ceilings, crown moldings, skylights, 2 en. suites with Jacuzzis, extraordinary loft, 4 + 1 bedrooms, finished basement (ideal for at-home office or in-law suite).

Call Karen today for your personal tour.

OPEN HOUSE SUNDAY 2-4-51 JOSEPH ST., MARKHAM



"OLDE MARKHAM BUNGALOW" \$249,900
JUST LISTED - Walk to Main St., GO Train, bus & parks. Fabulous 60' x 150' mature treed lot. Charming 7 rm. bungalow, incl. sunroom, fin. rec. rm., sep. entrance to basement with walkout to backyard, huge workshop, 1 1/2 baths, 2-car garage. A must too see.
Call and ask for Donna Lincoln 905-940-4180



CALL TODAY, ASK FOR DONNA LINCOLN*
905-940-4180

*Lifetime Award of Excellence
*Top Producer
*Selling Real Estate for Over 25 Years



YOUR COMMUNITY REALTY

OPEN HOUSE • SUN., JAN. 14 & JAN. 21 • 2-4:30



FAYE KEARNS*
(905) 853-5955
TOR: (416) 229-4835



GROUP

future realty inc. (AN INDEPENDENT MEMBER BROKER OF NEWMARKET 883-8865)



5 DAVID WRIGHT COURT, WHITSTOUFFVILLE (AURORA RD. E. OF KENNEDY). Picture seclusion, nestled on 2.4 acres on "cut-de-see" in prestigious Trail of the Woods. The perfect escape & only mins. to Hwy. 401. Constructed of white pine log & wood. 4500+ sq. ft. finished living area. **\$649,500**



Beverley Sefton**
Associate Broker



905-642-2223

COME VIEW THE SUNSET...



From this gorgeous 1.7 acre property, located a short drive from Stouffville & Markham, Residence is a bungalow consisting of a large country kitchen, living rm w/open brick frpce & hrdwd frs, separate living quarters in lower level, dble att garage has workbench. List \$268,500.

*Sales Representative **Associate Broker