

INSIDE: Crime 5
 Letters 6
 Sports 30
 Classifieds ... 34

3 Will you vote for the local candidate, the leader of the party or the party on Monday?

ARTS & CULTURE CALENDAR

EVENT: Kelita in concert
WHEN: Tuesday, Dec. 5
WHERE: Springvale Baptist Church

24 Shaking the branches of your family tree by using the Internet.

SERVING WHITCHURCH-STOUFFVILLE SINCE 1888

Stouffville Tribune

50 CENTS INCLUDING GST / 52 PAGES

SATURDAY, NOV. 25, 2000

TO REACH US: 905-294-2200

HIGHER ASSESSMENT DOESN'T ALWAYS MEAN HIGHER TAX BILL

WILL TAXES GO UP?

BY PATRICK CASEY
 Staff Writer

York Region's booming economy has led to a surge in property values for homeowners, which could mean higher property taxes for some after their properties were reassessed.

But residents across the region may have caught a break, since the new assessment notices reflect the

market value of homes as of June 30, 1999.

Property values have continued to rise over the past 17 months, but increases during that time won't be included in the latest assessment figures mailed out over the past week.

Mario Vittiglio, assessment commissioner with the York Region branch of the Ontario Property

Assessment Corporation, said his organization used a wealth of market data to assess the current value of 237,000 properties in the region.

"A higher assessment doesn't automatically mean higher taxes," Vittiglio said. "Until such time as the municipalities and the region determine their tax rates, we don't know what kind of impact there will be."

On Dec. 19, OPAC will deliver an assessment roll to each municipality. The tax bill is calculated using the assessment and a municipality's residential tax rate.

However, municipal councils will not set their 2001 tax rates until early next year.

"Property owners, generally speaking, know what their properties

See MARKHAM, page 8.

'No vote is wasted,' candidates tell voters

A common question before Monday's election

BY ROGER VARLEY
 Staff Writer

"The only wasted vote is by the person who doesn't go out and exercise their right to vote."

That was Markham Green Party candidate Bernadette Mannings' response to the question: "Is there such a thing as a wasted vote?"

The question was posed as a result of numerous references in the federal election to so-called "wasted votes", usually made in reference to votes cast either for candidates with little or no chance of being elected or for parties that have little or no chance of forming the next government.

Her attitude was reflected by other candidates representing various parties and ridings in York Region.

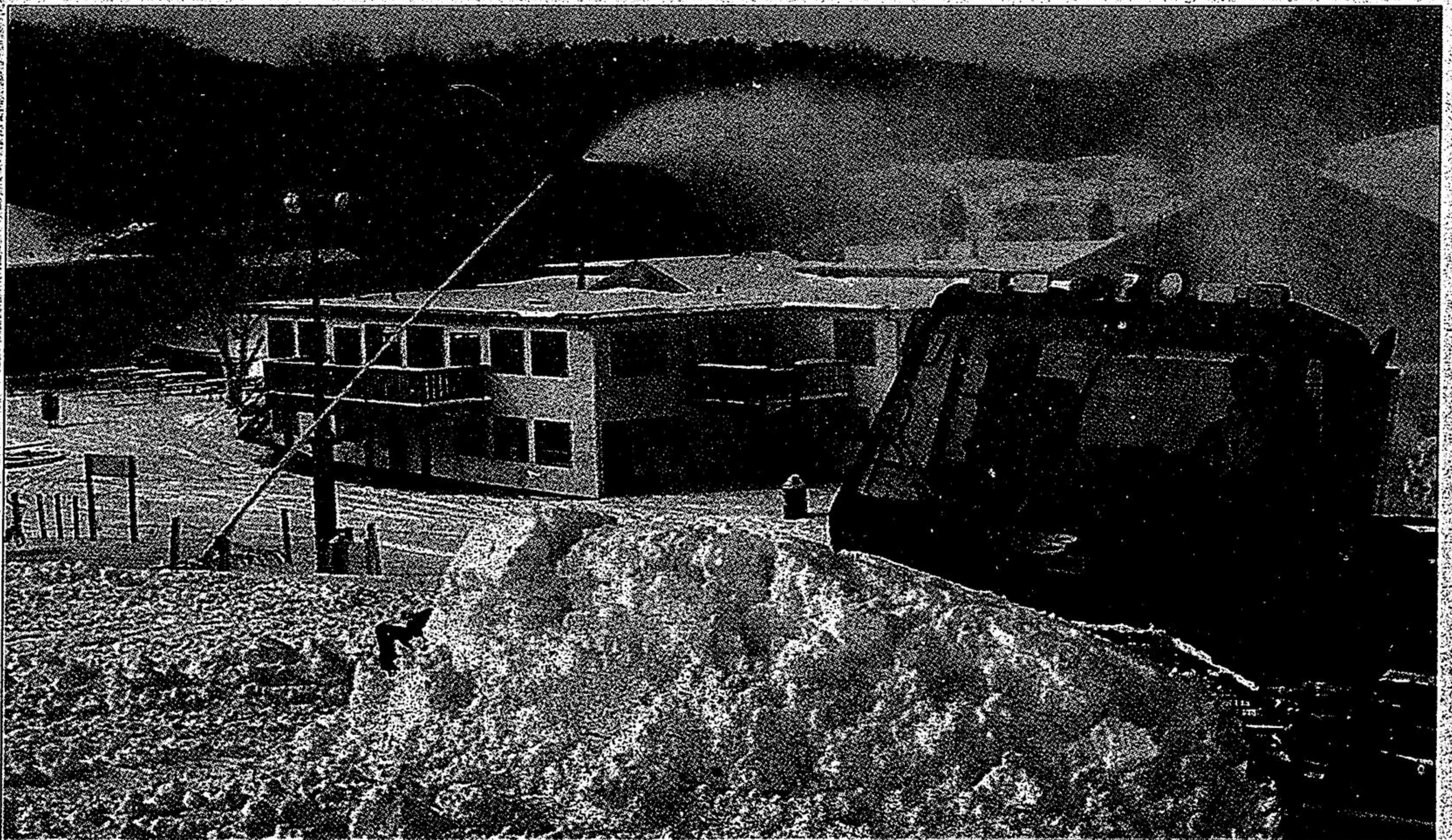
"I would never say a vote is wasted," said Bob Callow, running for the Canadian Alliance in Oak Ridges riding. "It shows a commitment on the part of the voter."

Joe Wambach, carrying the banner for the Progressive Conservatives in York North, said he is asked the question often as he meets voters.

"This is a democracy," he said. "There's no such thing as a wasted vote in a democracy."

Larry Leduc, a professor of political science at the University

See TERM, page 11.



PHOTO/CELIA BRONKHORST

LET IT SNOW

Mike Pearson, operations manager at Dagmar Resort, operates the snow groomer as the resort geared up for its grand opening yesterday. The hills have a base of 15-20 inches of snow. Hours of operation this weekend are 9 a.m. to 5 p.m. Dagmar is located east of Stouffville on Lakeridge Road.

REPAIR SPECIALISTS
MERCEDES
 172 BULLOCK DRIVE, UNIT 31
 MARKHAM
 471-8660

NORTH MARKHAM
HONDA
 4611 Hwy. #7,
 (west of Kennedy Rd.)
 Unionville
 477-2451

Bring it home to Honda.
 If you're like most Honda owners, you want only the best for your car. Only your Honda Dealer can provide the Genuine Honda parts and factory trained technicians to keep your Honda in tip-top condition year-round. So don't open your hood to strangers. Bring it home to Honda and keep it fit with:

- Factory Trained Technicians
- Genuine Honda Parts
- Everyday Price and Everyday Value
- Accelerated Service
- Uncompromising Quality

63.88
 Includes Oil, Filter & Lube
Honda's Great Get Fit Check Up

- Oil and filter change. Check for fluid leaks.
- Battery load / charging test.
- Inspect coolant level and freezing point.
- Pressure test cooling system.
- Inspect related hoses and clamps.
- Inspect all brakes for wear, condition and parking brake.
- Inspect brake pads, wheels, tires and tire pressure.
- Inspect suspension and steering.
- Inspect transmission fluid level and condition.
- Inspect horn, lights and wipers.
- Inspect and lubricate door locks, hinges and handles.
- Inspect block heater.
- Inspect drive shaft/bushion (excludes 4x4).
- Inspect disc brake pads, rotor and lines.
- Inspect windshield washer jets and fluid.
- Wash, buff and wax.
- Inspect hood latch system.
- Inspect trunk latch system.
- Inspect all lights and bulbs.
- Inspect and lubricate door locks, hinges and handles.
- Inspect block heater.

Sutton GROUP
Town and Country Realty Ltd.
 640-0888