

SMARTLEASE LEASE RATE PURCHASE FINANCING
\$215 WITH **19%** OR **19%**
 PER MONTH/48 MONTHS. UP TO 48 MONTHS. UP TO 60 MONTHS.
 \$1,645 Down Payment. \$730 Freight and \$300 Security Deposit Required.

2001 CHEVROLET CAVALIER SEDAN VLX
 • 4-Speed Automatic Transmission with Traction Assist • Air Conditioning • Remote Keyless Entry • Power Door Locks • CD Stereo • Theft-Deterrent System

CASH PURCHASE
 OR **\$17,578**
 EXCLUDES FREIGHT OF \$730

Down Payment	Lease Payment	Total Due†
\$0	\$250	\$1,514
\$2,500	\$196	\$4,326

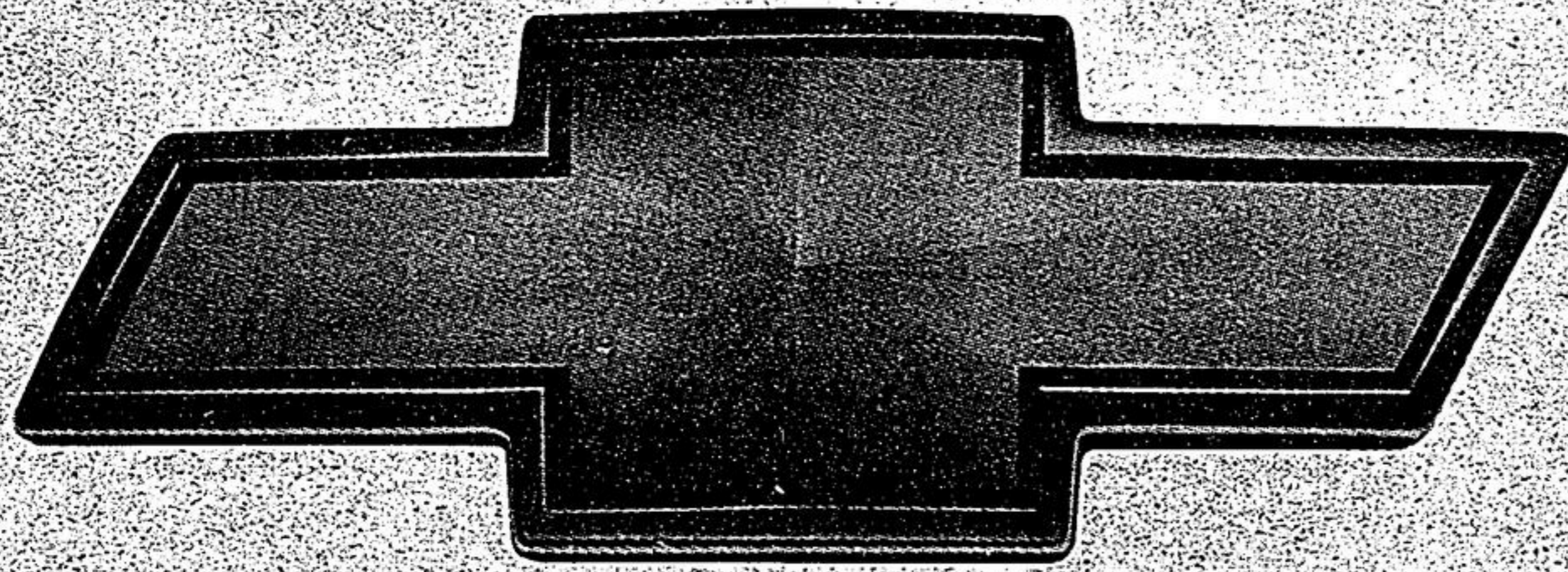


CASH PURCHASE **SMARTLEASE**
\$19,998 OR **\$268**
 EXCLUDES FREIGHT OF \$770 PER MONTH/36 MONTHS.
 \$2,570 Down Payment. \$770 Freight and \$325 Security Deposit Required.

2001 OLDSMOBILE ALERO GX SEDAN
 • 4-Speed Automatic Transmission with Enhanced Traction System • 4-Wheel Disc Brakes with Anti-Lock Braking System • 4-Wheel Independent Suspension • 2.4 Litre Twin Cam 150 HP Engine • Air Conditioning • 70/30 Split Folding Rear Seat

PURCHASE FINANCING
 OR **29%**
 UP TO 36 MONTHS.

Down Payment	Lease Payment	Total Due†
\$0	\$344	\$1,767
\$1,500	\$300	\$3,391



**The 2001s are in.
 Happy New Year.**

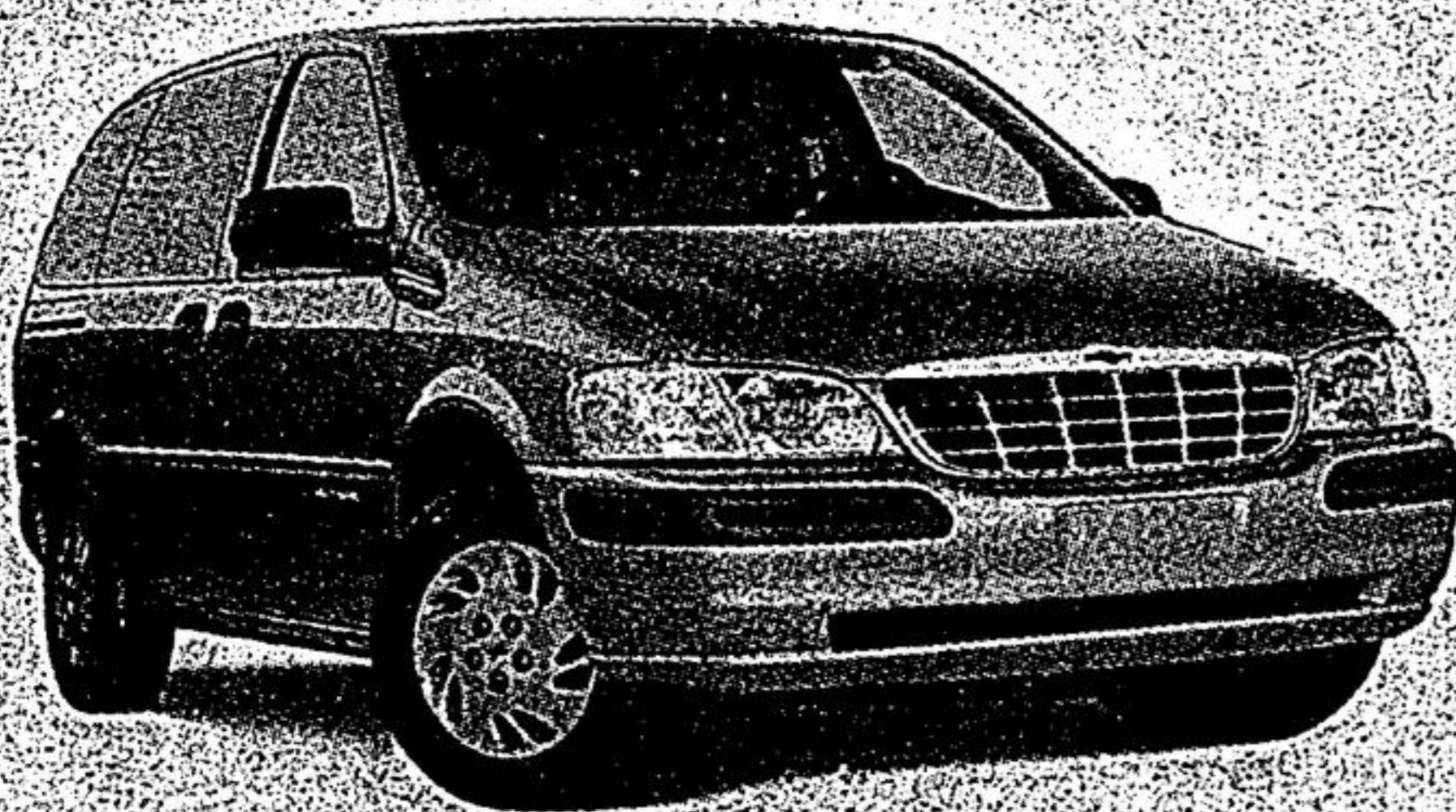


PURCHASE FINANCING **SMARTLEASE**
29% OR **\$288**
 UP TO 36 MONTHS. PER MONTH/36 MONTHS.
 \$2,600 Down Payment. \$770 Freight and \$350 Security Deposit Required.

2001 CHEVROLET MALIBU
 • 3.1 Litre V6 170 HP Engine • 4-Speed Automatic Transmission • Air Conditioning • 60/40 Split Folding Rear Seats • 4-Wheel Anti-Lock Braking System • AM/FM RDS Stereo w/CD

CASH PURCHASE
 OR **\$20,998**
 EXCLUDES FREIGHT OF \$770

Down Payment	Lease Payment	Total Due†
\$0	\$365	\$1,816
\$1,500	\$321	\$3,440



SMARTLEASE **CASH PURCHASE**
\$258 OR **\$22,998**
 PER MONTH/36 MONTHS. UP TO 60 MONTHS. EXCLUDES FREIGHT OF \$940.
 \$3,775 Down Payment. \$940 Freight and \$300 Security Deposit Required.

2001 CHEVROLET VENTURE VALUE VAN
 • 3.4 Litre V6 185 HP Engine • 4-Speed Automatic Transmission • 4-Wheel Anti-Lock Braking System • Air Conditioning • Standard Integral Child Seat • Tilt Wheel & Power Door Locks • AM/FM Stereo/CD

PURCHASE FINANCING
 OR **29%**
 UP TO 60 MONTHS.

Down Payment	Lease Payment	Total Due†
\$0	\$368	\$1,929
\$2,000	\$310	\$4,112



SMARTLEASE **PURCHASE PRICE**
\$388 OR **\$28,998**
 PER MONTH/36 MONTHS. UP TO 48 MONTHS. EXCLUDES FREIGHT OF \$990.
 \$3,650 Down Payment. \$990 Freight and \$450 Security Deposit Required.

2001 CHEVY SILVERADO EXTENDED CAB
 • 270 HP Vortec 4800 V8 Engine • 4-Speed Automatic Transmission with Overdrive • Air Conditioning with Interior Air Filtration System • 4-Wheel Disc & 4-Wheel Anti-Lock Braking System • 40/20/40 Split Front Seat with Custom Cloth Trim • Full Instrumentation including: Tachometer, Engine Hour Meter & Driver Message Centre

PURCHASE FINANCING
 OR **59%**
 UP TO 48 MONTHS.

Down Payment	Lease Payment	Total Due†
\$0	\$502	\$2,316
\$2,500	\$424	\$5,001



For the latest information, visit us at gmcanada.com, drop by your local Chevrolet • Oldsmobile Dealer or call us at 1-800-GM-DRIVE.

Based on a 1.9%/3.9%/3.9%/2.9%/8.4% (Cavalier Sedan VLX R7Y/Alero GX Sedan R7Z/Malibu R7Z/Venture Value Van R7Z/Silverado Ext. Cab R7L) annual lease rate, 48/36/36/36-month term. \$0.12/km charge over 80,000/60,000 km for 48/36 months. Option to purchase at lease end is \$7,822/\$10,732/\$11,054/\$12,872/\$16,642 (Cavalier Sedan VLX R7Y/Alero GX Sedan R7Z/Malibu R7Z/Venture Value Van R7Z/Silverado Ext. Cab R7L) plus applicable taxes. Licence, insurance, PPSA, administration fees and taxes not included. Other lease options available. Financing on approved GMAC credit only. Example: \$10,000 at 1.9%/2.9%/2.9%/2.9%/5.9% APR; the monthly payment is \$174.84/\$290.37/\$179.24/\$234.39 for 60/36/36/60/48 months. Cost of borrowing is \$490.40/\$453.32/\$453.32/\$754.40/\$1,250.72. Total obligation is \$10,490.40/\$10,453.32/\$10,453.32/\$10,754.40/\$11,250.72. Down payment and/or trade may be required. Monthly payment and cost of borrowing will vary depending on amount borrowed and down payment/trade. †The SMARTLEASE monthly payment and the GMAC purchase finance rate are not available with and are not calculated on the "Cash Purchase" price as shown. The difference between the price for the SMARTLEASE/GMAC Purchase Finance offer and the "Cash Purchase" offer is deemed under provincial disclosure laws to be a cost of borrowing, whether or not the same represents actual interest and is required to be expressed as an annual percentage rate of 4.69%/6.99%/6.85%/6.10% (Cavalier Sedan VLX R7Y/Alero GX Sedan R7Z/Malibu R7Z/Venture Value Van R7Z). Offers apply as indicated to new or demonstrator 2001 models of Cavalier Sedan VLX R7Y/Alero GX Sedan R7Z/Malibu R7Z/Venture Value Van R7Z/Silverado Ext. Cab R7L equipped as described. †Offers apply to qualified retail customers in the Ontario Chevrolet Oldsmobile Dealer, Marketing Association area only (excluding Northwestern Ontario). †Dealer order or trade may be necessary. Limited time offer which may not be combined with other offers. Lease and purchase offers do not include Freight (as indicated), Licence, Insurance or Taxes. Dealers are free to set individual prices. See your dealer for conditions or details. †Total due on signing includes down payment, freight, security deposit, 1st month's payment plus taxes.