



TOWN OF WHITCHURCH-STOUFFVILLE "COUNTRY CLOSE TO THE CITY"

NOTICES

2000 FINAL TAX BILLS

1ST Installment Due - August 18, 2000
2ND Installment Due - October 20, 2000

TAX bills have now been mailed. Ratepayers who have not received their bills should make immediate application to the Municipal Tax Department.

THE PENALTY charged for non-payment of 2000 taxes is one and one-quarter (1-1/4) percent imposed on the first day of default and on the first day of each month thereafter.

FAILURE to receive a tax bill does not eliminate the responsibility for payment of taxes nor the penalty charges for late payment.

TAX PAYMENTS may be made by mail, or in person at the Town Office and at most Financial Institutions through tellers, banking machines and by telephone. Banking fees may apply. Penalty will be charged and added to your tax account at our office on payments made at the bank after the due dates. After hours tax payments may be left in the drop box at the front west entrance door of the Imperial Building (37 Sandiford Drive).

Ruth Armstrong, AMCT, CMTC
Tax Collector

TOWN OFFICE HOURS
MONDAY to FRIDAY: 8:30 A.M. to 4:30 P.M.

York Region, with the cooperation of the Town of Whitchurch-Stouffville, has launched one of the largest water efficiency programs in Canada to help homeowners, businesses and public facilities use water more wisely.



Wherever you see
... people are working together for water efficiency in York Region
Watch for more information in the local newspaper.

TENDER

SALE OF LAND BY PUBLIC TENDER

THE CORPORATION OF THE TOWN OF WHITCHURCH-STOUFFVILLE

Take Notice that tenders are invited for the purchase of the land(s) described below and will be received until 3:00 p.m. local time on September 7th, 2000 at The Town of Whitchurch-Stouffville, Treasury Department.

The tenders will then be opened in public on the same day at The Town of Whitchurch-Stouffville, Council Chambers.

DESCRIPTION OF LAND(S)	MINIMUM TENDER AMOUNT \$ (set out the cancellation price as of the first day of advertising)
Parcel 4-1, Section 65M2741 Lot 4 Plan 65M2741 Town of Whitchurch-Stouffville Regional Municipality of York Land Titles Division of York Region	15 Stalwart Industrial Avenue Gormley, Ontario \$33,846.16
Parcel 5-1, Plan 65M2741 Lot 5 Plan 65M2741 Town of Whitchurch-Stouffville Regional Municipality of York Land Titles Division of York Region	17 Stalwart Industrial Avenue Gormley, Ontario \$33,915.20
Unit 17, Level 2 York Region Condominium Plan 835 in the Town of Whitchurch-Stouffville in the Regional Municipality of York Land Titles Division of York Region	86 Ringwood Drive Unit 17, Level 2 Stouffville, Ontario \$9,251.16

Tenders must be submitted in the prescribed form and must be accompanied by a deposit in the form of a money order or of a bank draft or cheque certified by a bank, trust corporation or Province of Ontario Savings Office payable to the municipality or board and representing at least 20 per cent of the tender amount.

The municipality makes no representation regarding the title to or any other matters relating to the land to be sold. Responsibility for ascertaining these matters rests with the potential purchasers.

This sale is governed by the Municipal Tax Sales Act and the Municipal Tax Sales Rules made under that Act. The successful purchaser will be required to pay the amount tendered plus accumulated taxes and the relevant land transfer tax.

For further information regarding this sale and a copy of the prescribed form of tender, contact:

Ruth Armstrong, AMCT CMTC
Tax Collector

Personal information contained on this form, collected pursuant to the Municipal Tax Sales Act and Regulation thereunder, will be used for the purposes of that Act. Questions should be directed to the Freedom of Information and Privacy Coordinator at the institution responsible for the procedures under that Act.

COMMUNITY AND LEISURE SERVICES

TREAD A THON, AUGUST 12, AT 2:00 P.M.

Everyone is welcome to participate in our tread a thon to raise money for toys for the new aquatic centre. All you have to do is tread water for an hour (lifejackets are allowed). We are almost at our goal of \$1200 for fundraising and this should do it. You can get pledges, give a pledge of your own, or just come and tread for the fun of it. Prizes. Pick up forms at the Stouffville Outdoor Pool.

INSTRUCTORS NEEDED

We are currently seeking instructors to teach after school basketball and drama classes. If you feel you are experienced to teach either one of these courses, please send your resume to:

Micole Ongman, c/o Community and Leisure Services,
or fax it to (905) 642-1941

FALL CLASSIC, SKATE PARK COMPETITION

We are currently in the planning stages for our Fall Classic Competition. We are looking for judges, announcers and any prizes that you may have to donate for the winners. Please call Micole at (905) 640-1910 ext. 288 if you are interested in helping out.

LIBRARY

SUNDAY AFTERNOON MOVIE AT THE PUBLIC LIBRARY

The Whitchurch-Stouffville Public Library will be showing monthly Sunday afternoon movies for children as part of its summer programming. This month Star Wars: The Phantom Menace will be shown on Sunday August 13th at 1:00 p.m. The cost is \$2/person at the door.

CHILDREN'S PROGRAMMING 2000-2001

Registration material is now available for Fall/Winter/Spring children's programs. Four programs will be offered: bouncing babies, musical 2s, preschool story hour and preschool musical discoveries. Classes begin the week of September 11, and preregistration is required.

RED CROSS BABYSITTING COURSE

The next Babysitting course at the Whitchurch-Stouffville Public Library will be offered on Saturday, September 3rd, from 9:30 a.m. - 4:45 p.m. This course is for young adults ages 11 and up, and the cost is \$45. To register please bring the registration fee, and proof of age to the library. Preregistration is required. Please register early to avoid disappointment.

For further information, please contact Vanessa Menor, Children's Librarian, at 640-5639 ext. 228.

MUSEUM

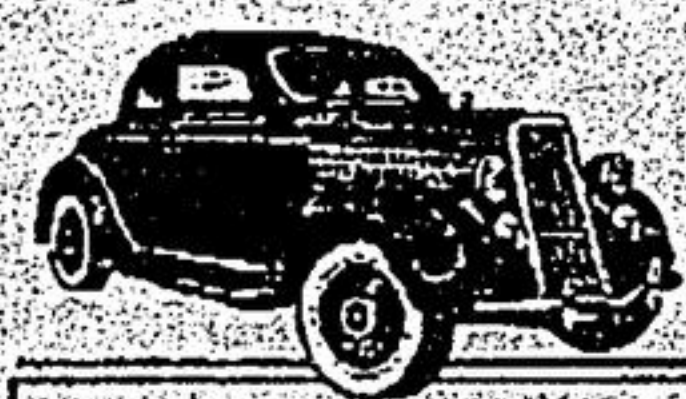
Whitchurch-Stouffville
MUSEUM'S

Antique
&
Classic
Car Show

27th Annual

FEATURING
3RD ANNUAL
YOUTH MODEL CAR
SHOW AND CONTEST

SUNDAY, AUGUST 13, 2000 (Raindate: Aug. 20)
11:00 am - 4:00 pm
14732 WOODBINE AVE., IN VANDORF



ADMISSION:
\$5.00 PER EXHIBITOR (WITH GUEST)
\$5.00 PER PERSON
\$12.00 PER FAMILY (4 PEOPLE)
CHILDREN UNDER 7 ARE FREE.

Entertainment & Demonstrations:

GAMES
MUSIC
MAGIC
CRAFT DEMONSTRATIONS
PIONEER LIFESKILLS AND 19TH CENTURY TRADES



History Exhibits: "150 YEARS OF WHITCHURCH TOWNSHIP"

RESTORED VICTORIAN FARMHOUSE
NEWLY RENOVATED VANDORF PUBLIC SCHOOL:
C.1850 LOG CABIN
19TH CENTURY STREETScape



BARBEQUE HOSTED BY THE MUSEUM
& HERITAGE ADVISORY BOARD
SANDWICHES AND HOME-BAKED GOODS
BY THE FRIENDS OF THE MUSEUM.

Food:



FOR FURTHER INFORMATION, PLEASE CALL: 905-727-8954
OR USE OUR NEW TOLL FREE LINE: 1-888-290-0337

Don't Miss the Museum's

YOUTH MODEL CAR CONTEST

At our Annual Antique & Classic Car Show

Sunday, August 13, 2000
Raindate: Sunday, August 20
14732 Woodbine Ave., Vandorf

Categories for:

Kits or 'Scratch' Built Models
Under 12 and Under 16 Age Groups.

Free Admission for each Entrant and one accompanying adult.

Set-up: 10:30, Judging: 11:00 - noon

Prizes & Entrant Recognition

SUMMER ICE

\$110.00 + GST - PRIME
\$65.00 + GST - NON PRIME
CALL 640-1910 EXT. 287

37 Sandiford Drive, 4th Floor • Stouffville L4A 7X5

(905) 640-1900 Fax: (905) 640-7957 • (905) 895-2423

townofws@interlog.com • Automated Lines (905) 640-1910 / (905) 895-5299 • Drop off box at west entrance