

MARKHAM MAZDA

MAKE YOUR MOVE CLEARANCE

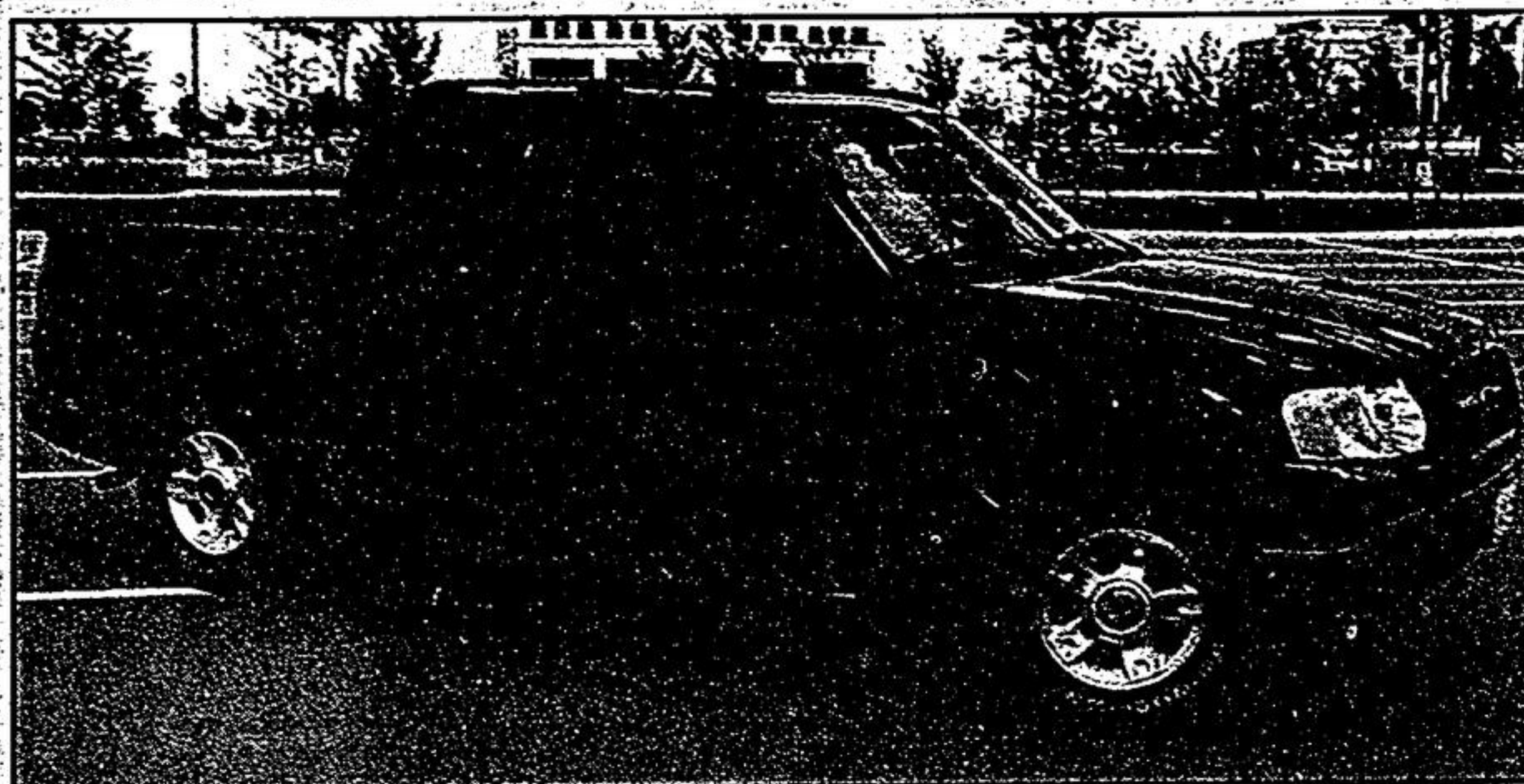
- 1999 HUYNDAI TIBURON SE**
Silver, 5 spd., loaded, leather, remote CD.
Stk# L0112A. Only 17,709 kms.
REG. PRICE \$19,995 SALE **\$17,595**
- 1998 VOLVO S70**
Black, auto, a/c, leather. Stk# P0049
REG. PRICE \$25,995 SALE **\$22,595**
- 1998 TOYOTA CAMRY LE**
White, auto, loaded. Stk# P0040
REG. PRICE \$20,995 SALE **\$18,895**
- 1998 MAZDA 626 LX**
Red, 5 spd., loaded, one owner.
Stk# F0005A
REG. PRICE \$17,895 SALE **\$16,995**
- 1997 HONDA ACCORD SE**
White, auto, a/c, loaded. Bal. of 5 yr/100K
warranty. Stk# U0197A
REG. PRICE \$18,995 SALE **\$16,995**
- 1997 HONDA CIVIC CX**
Black, auto, P/S, P/B, Am/Fm/Cass.
Ext. warranty. Stk. #P0081.
REG. PRICE \$13,895 SALE **\$12,995**
- 1997 MAZDA B2300**
Black, auto, air, ABS. Stk. #P0074.
REG. PRICE \$11,895 SALE **\$10,995**
- 1997 PONTIAC TRANSPORT**
Silver, auto., sunroof, A/C, ABS.
Only 8,810 km. Stk. #P0080.
REG. PRICE \$16,995 SALE **\$15,595**
- 1997 MAZDA B4000 EXT. CAB**
Red, auto., P/S, P/B, Am/Fm Cass.
Stk# P0068.
REG. PRICE \$15,395 SALE **\$13,995**
- 1997 AUDI A4 2.8 QUATRO**
Silver, 5 spd., loaded, leather, one owner.
Stk. #P0058.
REG. PRICE \$28,995 SALE **\$26,895**
- 1997 ACURA INTEGRA GS**
Red, 5 spd., loaded, balance warranty.
Stk#P0072.
REG. PRICE \$19,995 SALE **\$18,895**
- 1997 MAZDA MX-6 LS**
Red, 5 spd., loaded, leather. Stk# P0082.
REG. PRICE \$21,995 SALE **\$20,895**
- 1996 SUZUKI SIDEKICK JX SPORT**
Black, 5 spd., 4x4, loaded, ABS, custom
alloy. Stk# U0038.
REG. PRICE \$13,895 SALE **\$11,695**
- 1996 CHEV LUMINA MINI VAN**
Teal, auto., A/C, Am/Fm Cass., 7 passenger.
Stk#P0076.
REG. PRICE \$13,995 SALE **\$12,595**
- 1996 MAZDA B2300**
Blue, 5 spd., P/S, P/B, ABS. Stk# P0077.
REG. PRICE \$9,995 SALE **\$8,595**
- 1996 MAZDA 626 DX**
Green, 5 spd., P/sunroof. Stk# P0059.
REG. PRICE \$11,995 SALE **\$10,695**
- 1996 MAZDA MX3 GS**
Green, V6, auto., A/C, power, CD, cruise,
loaded. Stk# P0051.
REG. PRICE \$16,995 SALE **\$14,995**
- 1996 SATURN SW2**
Red, auto., air, A/m F/m Cass. Stk# U0159A.
REG. PRICE \$11,995 SALE **\$10,695**
- 1996 HONDA ACCORD EX**
Green, auto., air, loaded, new tires.
Stk. #P0041.
REG. PRICE \$14,995 SALE **\$13,895**
- 1996 MAZDA 626 LX**
Grey, 5 spd., A/C, P/L, alloy, spoiler.
Stk# P0054.
REG. PRICE \$12,995 SALE **\$11,395**
- 1995 FORD CONTOUR**
Red, auto., loaded. Stk# U0253A.
REG. PRICE \$9,695 SALE **\$7,995**
- 1995 NISSAN PATHFINDER SE V6**
Black, auto., loaded, leather. Stk# U0092A.
REG. PRICE \$17,995 SALE **\$15,995**
- 1995 DODGE NEON SPORT**
Red, A/C, P/lock, custom stripes, one owner.
Stk# U0223A.
REG. PRICE \$8,995 SALE **\$7,995**
- 1995 DODGE CARAVAN SE**
Grey, auto., A/C, cruise. Stk# X0213A.
REG. PRICE \$8,995 SALE **\$7,695**
- 1995 GMC GEO**
Black, auto., A/C. Stk# D0127A.
REG. PRICE \$7,995 SALE **\$6,595**

5396 Hwy #7
294-1210
Markham

Extended Hours:
Wed until 9pm
Sat until 1pm

Readers
Choice
Award
1999

Ford Explorer Sport Trac 2001



There is no mistaking the 2001 Ford Explorer Sport Trac that combines the attributes of a SUV and a short-bed pickup truck.

Part pick-up part luxury car...

By JIM ROBINSON

Where Jeep created the concept of the sport utility vehicle with the Cherokee, Ford solidified it in the minds of consumers with the Explorer.

Explorer was like a cork out of a bottle, releasing pent-up demand which some of us (including me) never recognized until it exploded onto the North American carbuying scene. Car companies that would never have considered building a SUV a decade ago (i.e. the Germans) and those that would have been hard-pressed

See Part moms, page 10

Brightest Ideas

CONTINUES



SOPHISTICATED & SPIRITED



THE ALL-NEW 2001 SENTRA

Purchase Sentra XE with Value Option Package only
\$16,398

Lease Sentra XE with Value Option Package for only
\$198/mo.*
for 48 months, only \$1,500 down

• 126-HP 1.8-litre engine • Air conditioning • 4-speaker AM/FM with CD audio system • Colour-keyed body side mouldings and door handles • 8-way adjustable driver's seat • Centre console armrest • Vanity mirrors, and more...

THE MOST POWERFUL V6 OF ANY SUV**



Pathfinder XE starts at \$34,700

THE 250-HP 2001 PATHFINDER

Purchase Pathfinder SE automatic only
\$40,298

Lease for only
\$488/mo.*
for 48 months, only \$4,000 down

• Power Changes Everything - 250-HP 3.5-litre DOHC engine • 265 ft-lb torque @ 3,200 RPM • All-Mode 4-wheel drive (automatic 4-wheel drive selector dial) • 16" alloy wheels • Air conditioning • Bose® acoustically tuned audio system • Upgrade 6-disc in-dash CD autochanger • Power sliding glass sunroof • And much more...

"BEST ENTRY MIDSIZE CAR IN INITIAL QUALITY IN THE U.S., 3 OUT OF THE LAST 4 YEARS" - J.D. POWER AND ASSOCIATES



Altima XE starts at \$19,998

Purchase Altima GXE for only
\$21,498

LOW LEASE RATES - OR -
Get **2.8%+** financing

• 155-HP 2.4-litre engine • 100-watt AM/FM/CD audio system • 4-speed automatic transmission • Air conditioning • Remote keyless entry system with panic alarm • Dual airbags • Power windows, mirrors, door locks, trunk release, and more...

2000 Maxima GXE: "Car of the Year Award Winner for Best New Family Car" (more than \$25,000)
Automobile Journalists Association of Canada

2000 Maxima SE: "Car of the Year Award Winner for Best New Sports Sedan"
Automobile Journalists Association of Canada



Maxima GXE starts at \$28,890

Lease Maxima SE with Convenience Package for only
\$399/mo.*
for 48 months, only \$4,800 down

Get **2.8%+** financing

• 222-HP 3.0-litre V6 engine • Automatic transmission • 7-speaker 200-watt AM/FM/CD with cassette audio system • Automatic climate-control air conditioning • Anti-theft system • Heated power driver's seat • Power sliding glass sun roof • Leather interior and more...



NEW SERVICE HOURS

Mon. - Thurs.
7-9 pm
Fri. 7-5:30 pm
Sat. 8-3 pm

NISSAN

4600 Hwy. #7, Markham (905) 477-5555

www.villagenissan.com

